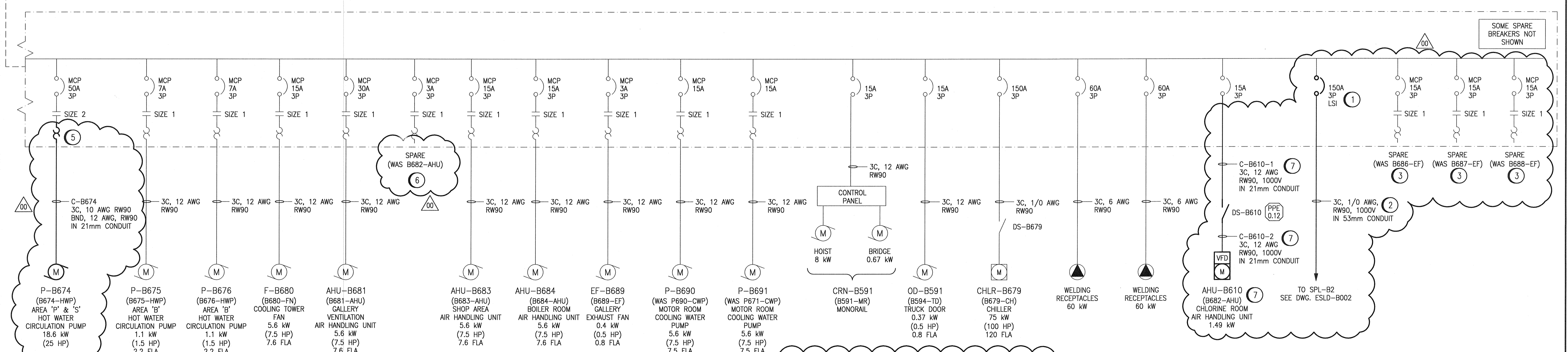
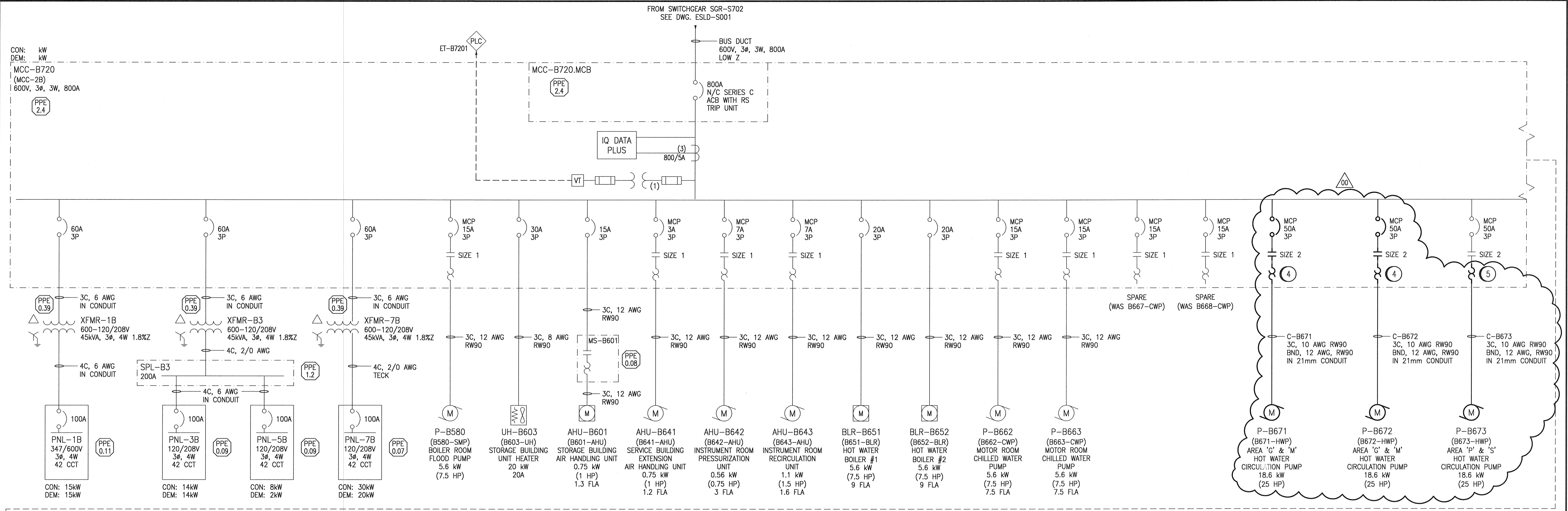


A1 SIZE - 594mm x 841mm



- SPECIFIC NOTES**
- REMOVE EXISTING 150A THERMAL MAGNETIC BREAKER AND PROVIDE A CUTLER HAMMER 250A FRAME KD OPTIM 550 BREAKER WITH ADJUSTABLE LSI SETTINGS FOR BETTER COORDINATION WITH DOWNSTREAM BREAKERS. THE BREAKER SHALL HAVE A RATING PLUG OF 200A WITH THE LONG TIME PICKUP SET TO 150A. PROVIDE ALL NECESSARY ACCESSORIES FOR MOUNTING.
 - REMOVE EXISTING CABLING (1 AWG) AND CONDUIT ASSOCIATED WITH AT5-B1. PROVIDE NEW WIRING RUN IN CONDUIT FROM MCC-B720 TO SPL-B2. CABLE TO BE UPSIZED TO 1/0 AWG.
 - DISCONNECT AND REMOVE WIRING AND CONDUIT TO GRIT TANK EXHAUST FANS. THESE EQUIPMENT ARE TO BE FED FROM NEW MCC-G770 AND MCC-G780 LOCATED IN GRIT AND SCREENINGS ELECTRICAL ROOM G-144 (REFER TO DWG ESJD-G006). RETAIN MOTOR STARTER AND MARK AS 'SPARE'.
 - REMOVE EXISTING MOTOR STARTER. PROVIDE NEW STARTER, 50A, 3P MOTOR CIRCUIT PROTECTOR, OVERLOADS, XFMR, TERMINALS, CONTACTOR, WIRING AND CONDUIT TO SUIT MOTOR NAMEPLATE. REFER TO DRAWING SEP-910 FOR LOCATION OF PUMP.
 - PROVIDE NEW OVERLOADS, WIRING AND CONDUIT TO SUIT MOTOR NAMEPLATE. RETAIN EXISTING MOTOR CIRCUIT PROTECTOR AND STARTER. REFER TO DRAWING SEP-910 FOR LOCATION OF PUMP.
 - REMOVE WIRING/CONDUIT TO AIR HANDLING UNIT B682-AHU AS THIS EQUIPMENT WILL BE DEMOLISHED AND REPLACED WITH NEW UNIT. RETAIN MOTOR STARTER AND MARK AS 'SPARE'.
 - WIRE AND CONNECT NEW AHU-B610 LOCATED IN MECHANICAL ROOM B113. PROVIDE NEW CABLING AND CONDUIT FROM MCC TO DISCONNECT AND TO THE EQUIPMENT. PROVIDE NEW DISCONNECT SWITCH. REFER TO DWG. SEP-909 FOR LOCATION.

- GENERAL NOTES:**
- THIS DRAWING SUPERSEDES PART OF DWG. 1-0102B-E0007.
 - RE-TAG MCC, DISTRIBUTION EQUIPMENT, AND ALL LOADS. PROVIDE NEW LAMACODS. PREVIOUS IDENTIFIERS SHOWN IN PARENTHESES. ITEMS ARE NOT SHOWN CLOUDED.
 - THE EXISTING PORTIONS OF THIS DRAWING ARE BASED UPON EXISTING DOCUMENTATION AND WERE NOT FIELD VERIFIED.
 - CLOUDED PORTION INDICATE NEW WORK / MODIFICATIONS TO EXISTING EQUIPMENT.



NO.	REVISIONS	DATE	DESIGN	CHECK
01	ISSUED FOR ADDENDUM 3 - 976-2016	2017/06/23	WE	DEB
00	ISSUED FOR CONSTRUCTION - 976-2016	2017/04/05	WE	DEB

CH2MHILL
SNC-LAVALIN
 DESIGNED BY: V. ELIMBAN
 DRAWN BY: M.J. PERSSON
 SCALE: NTS
 DATE: 2014/10/02
 CONSULTANT NO.: 474248

KGS
PROVINCE OF MANITOBA
D.E. BECKER
 Member
 23646
 REGISTERED PROFESSIONAL ENGINEER

THE CITY OF WINNIPEG
 WATER AND WASTE DEPARTMENT
 SOUTH END WATER POLLUTION CONTROL CENTRE
 SEWPCC UPGRADING/ EXPANSION PROJECT
 ELECTRICAL - SINGLE LINE DIAGRAM
 SERVICE BUILDING
 MCC-B720
 CITY DRAWING NUMBER: 1-0102-ESLD-B001
 SHEET: 001
 REV: 01
 SIZE: A1

LAST SAVE: 2017/06/19 - 10:24am
PATH: C:\pwworkdir\ch2mhill_wsg\ve06717\0356005\1-0102-ESLD-B001.dwg

REFERENCE DRAWINGS	DESCRIPTION
1-0102-ECBD-B001	MCC-B720 LAYOUT & SCHEDULE
1-0102-EAAA-A001	ELECTRICAL, LEGEND AND DETAILS

PLOT DATE: Jun 19, 2017 - 10:24am

FILE NAME:1-0102-ESLD-B001.dwg