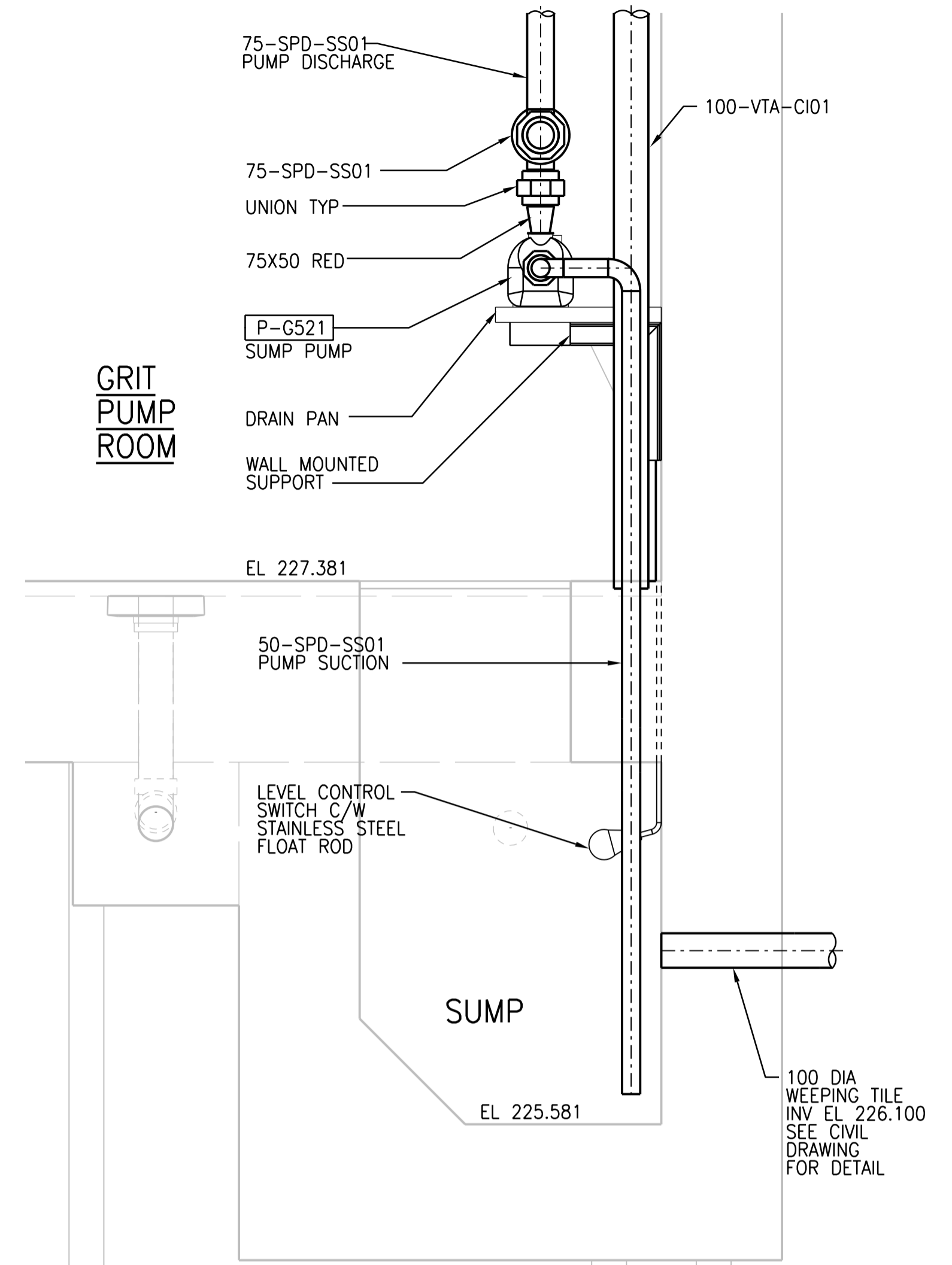
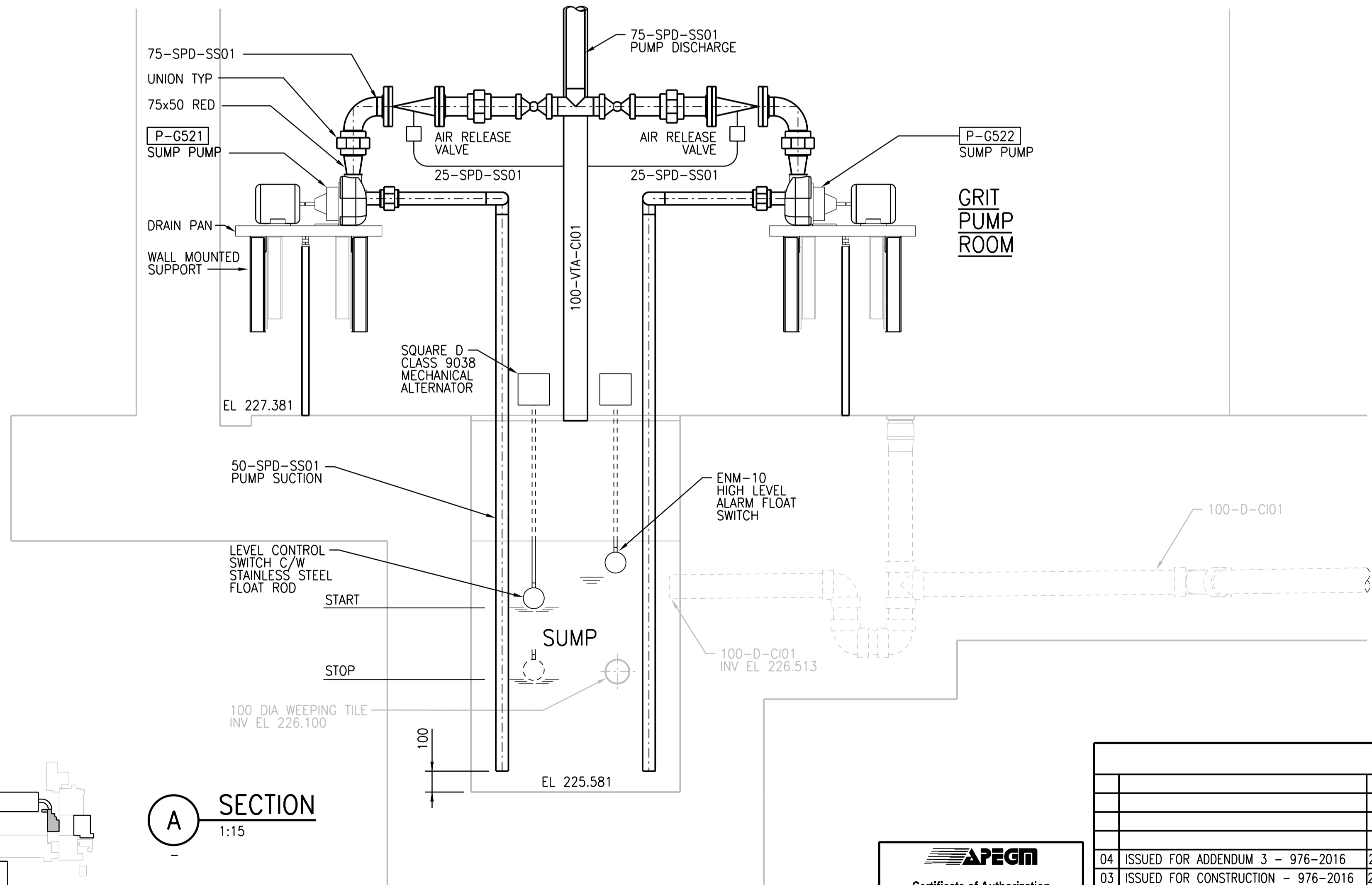


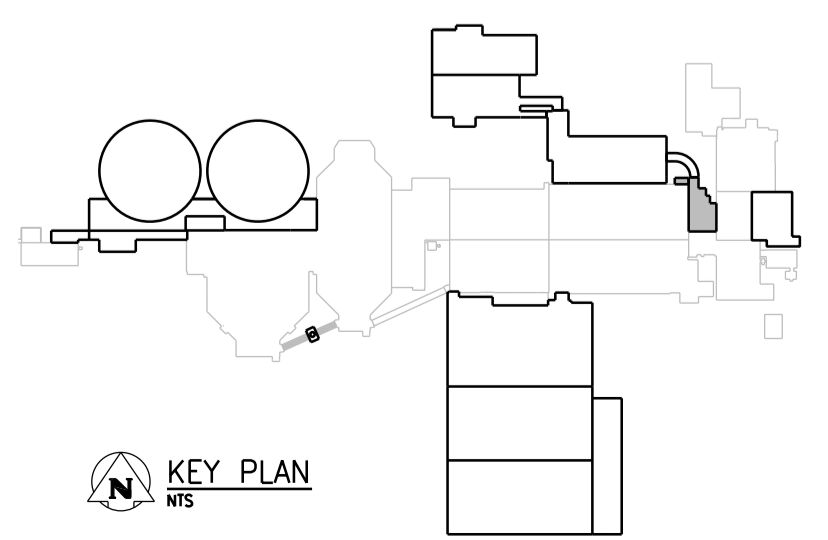
1 DETAIL
1:15
1-0102-MGAD-C501



B SECTION
1:15



A SECTION
1:15



APEGM
Certificate of Authorization
CH2M HILL Canada Ltd.
No. 1441

NO.	REVISIONS	DATE	DESIGN	CHECK
04	ISSUED FOR ADDENDUM 3 - 976-2016	2017/06/21	K.F.	J.C.
03	ISSUED FOR CONSTRUCTION - 976-2016	2017/04/05	K.F.	J.C.
02	ISSUED FOR 90% PRELIMINARY REVIEW	05/2016	K.F.	J.C.
01	ISSUED FOR CONSTRUCTION	10/2015	K.F.	J.C.
00	ISSUED FOR TENDER	08/2015	K.F.	J.C.

CH2MHILL
SNC-LAVALIN
DESIGNED BY: T. TRAN
DRAWN BY: K. FONG
SCALE: 1:10
DATE: 2017/04/05
CONSULTANT NO.: 474248

KGS
GROUP
CHECKED BY: D. CUDDINGTON
APPROVED BY: H.T. FREIHAMMER
ISSUED FOR CONSTRUCTION
BY: J. SHUMKA
DATE: 2017/04/05

ENGINEER'S SEAL
21 June 2017
PROVINCE OF MANITOBA
T.T. TRAN
Member
40578
REGISTERED PROFESSIONAL ENGINEER

THE CITY OF WINNIPEG
Winnipeg
WATER AND WASTE DEPARTMENT

SOUTH END WATER POLLUTION CONTROL CENTRE
SEWPCC UPGRADE/EXPANSION PROJECT
MECHANICAL
GRIT TANKS 1 AND 2
PLUMBING - SUMP DETAIL LAYOUT

CITY DRAWING NUMBER: 1-0102-MGAD-G503
SHEET: 04
REV.:
SIZE: A1