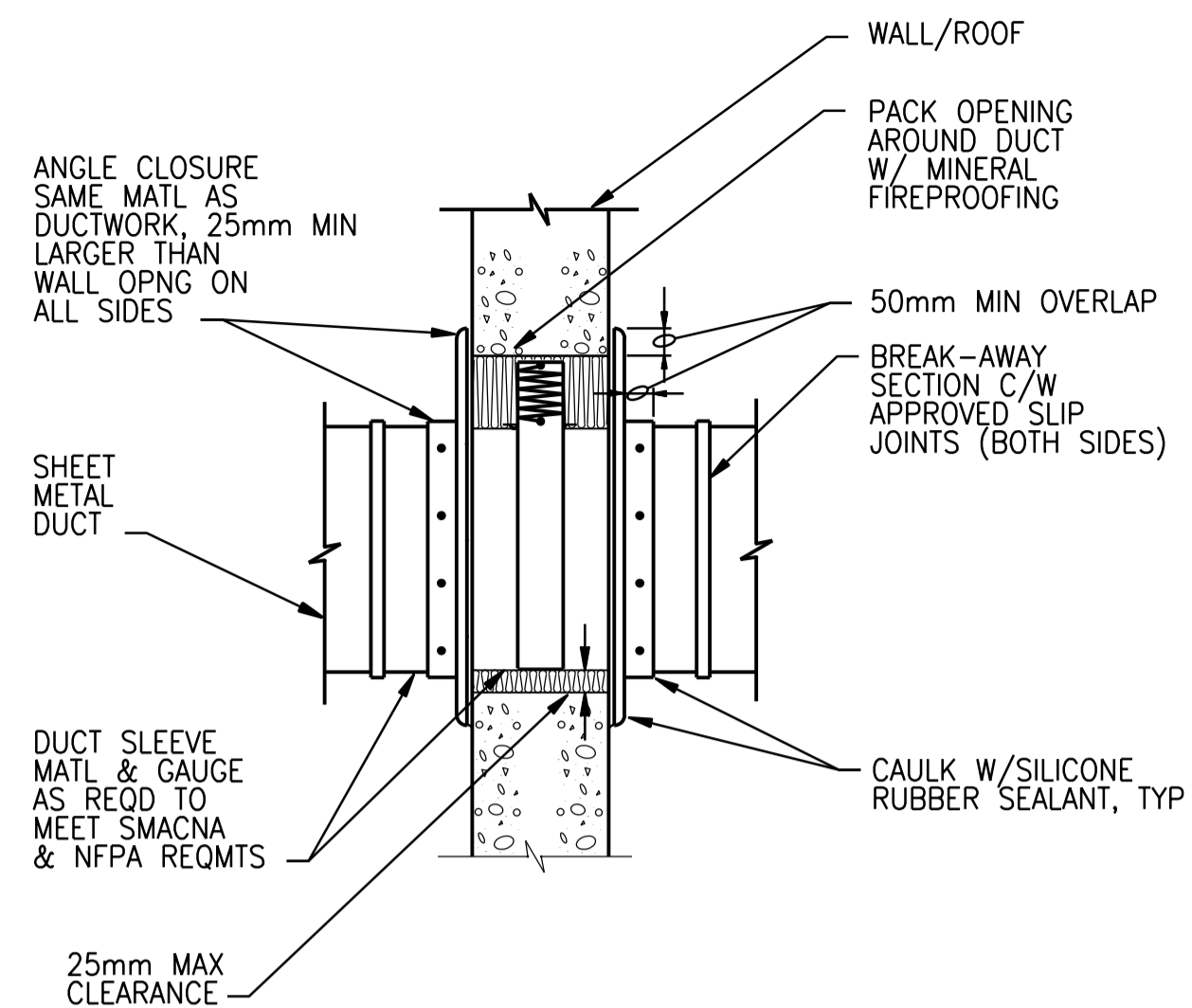


A1 SIZE - 594mm x 841mm



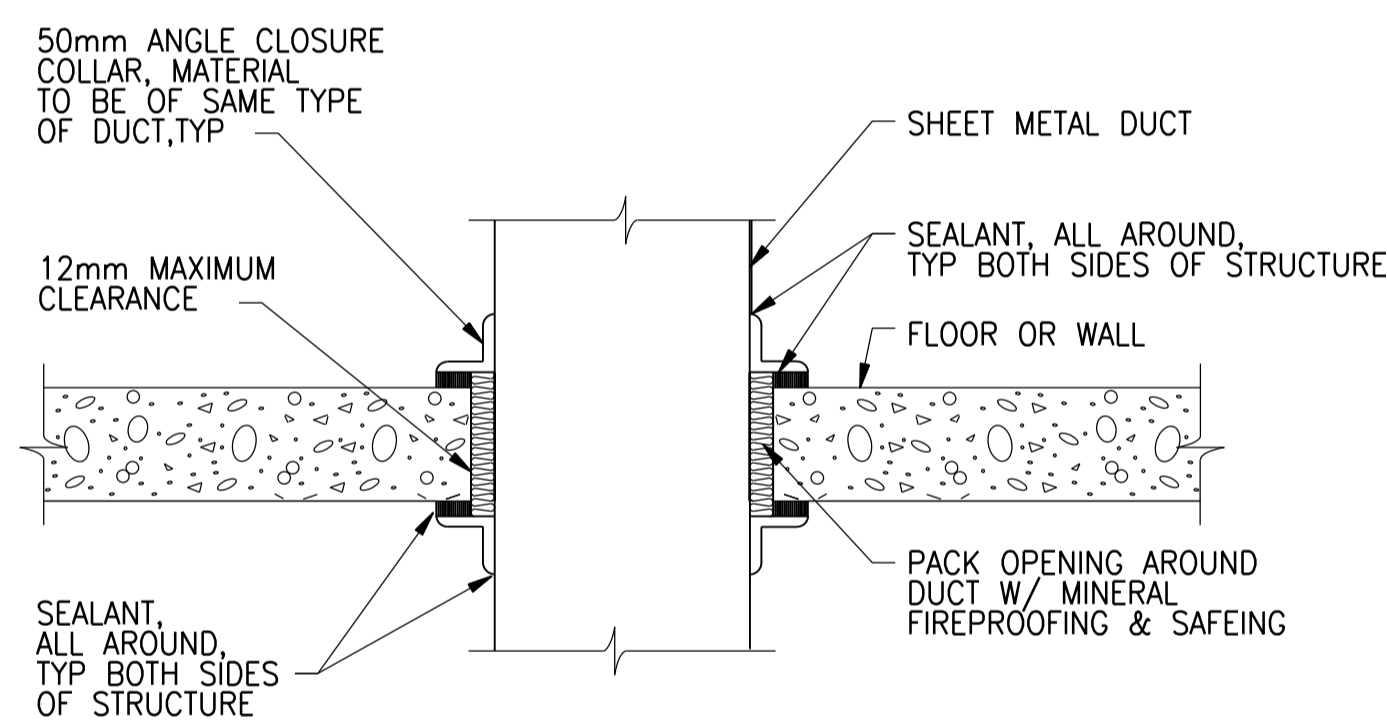
NOTES:  
1. FLOOR PENETRATION SIMILAR.

**DUCT WALL/FLOOR PENETRATION, FIRE-DAMPENED OPENING**  
NTS

2333-808

NOTES:

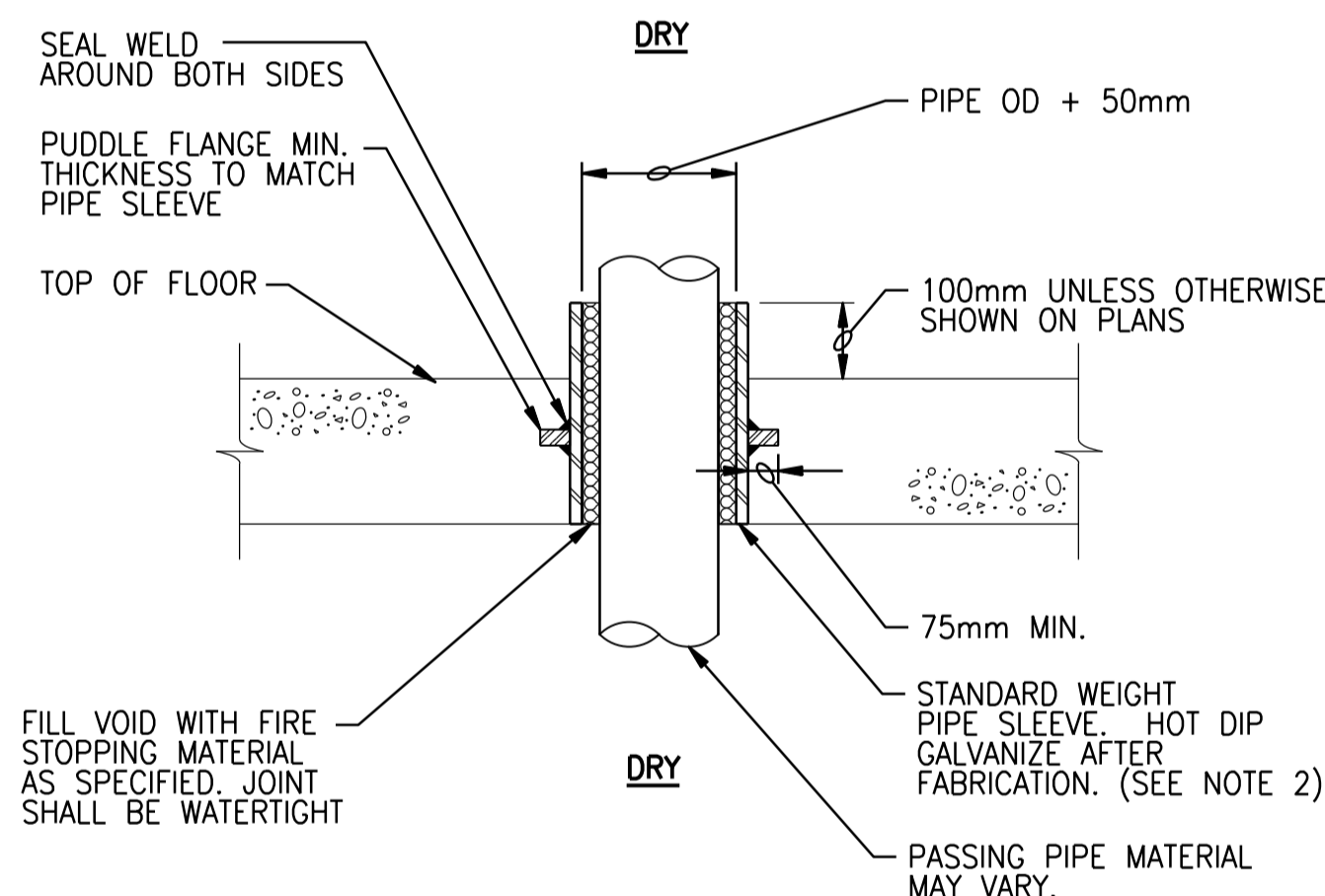
- REFER TO DWG MGAD-P050, P-051 FOR REMOVING AND RE-ROUTING OF DUCT AND HYDRONIC PIPING.
- HTR-G694 : 1.5 KW , MODEL WF, BY ROSEMEX, DIMENSION 800x150x500 HIGH
- HWS/HWR, GS/GR : CARBON STEEL PIPE AND FITTING FOR HYDRONIC WATER SERVICE C/W 40mm FIBERGLASS INSULATION AND ALUMINUM JACKETING
- ALUMINUM DUCTWORK WITH 32mm FIBERGLASS BOARD INSULATION AND FACTORY FINISH JACKETING
- FIELD VERIFY EXACT DUCT SIZE TO MATCH WITH EXISTING AHU OPENING
- GR-P681-1 : TITUS, MODEL 300RS-SS C/W GANG-OPERATED OPPOSED-BLADE VOLUME CONTROL DAMPER, DIMENSION 250x250
- FD-P681-1 : REFER TO DAMPER SCHEDULE ON DWG MGAD-K604
- V513 BUTTERFLY SHUT-OFF VALVES - SERIES 30/31, BRAY CONTROLS WITH CHAINWHEEL OPERATOR EXTENSION.
- CONFIRMED ASBESTOS CONTAINING MATERIAL IN HEATING WATER FITTINGS INSULATION. REFER TO ASBESTOS ABATEMENT SPECIFICATIONS FOR ABATEMENT PROCEDURES.



NOTES:  
1. WALL PENETRATION SIMILAR.  
2. 50mm ANGLE CLOSURE COLLAR OF SAME MATERIAL AS DUCT.

**FLOOR PENETRATION - DRY AREA**  
NTS

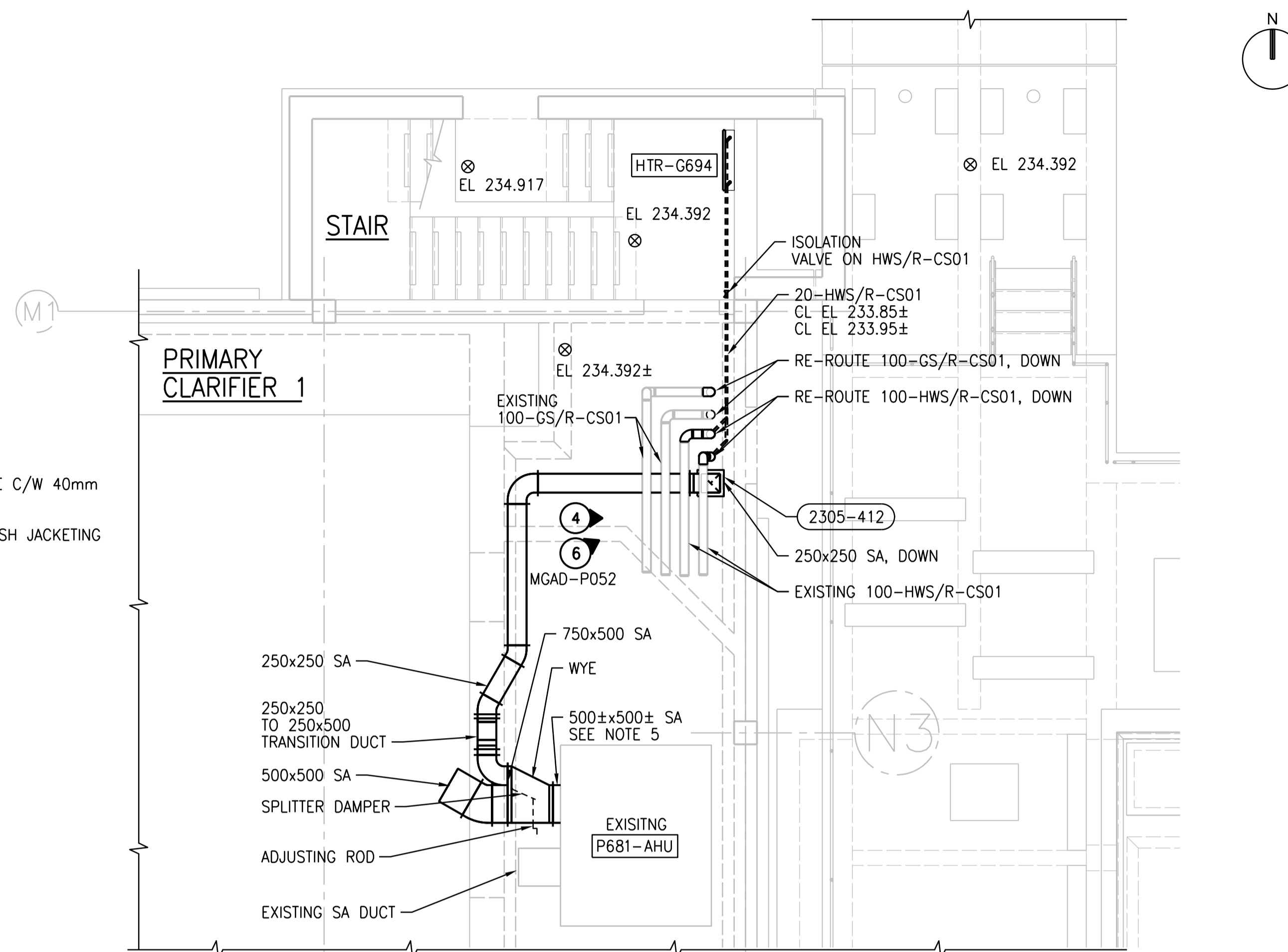
2305-412



NOTES:  
1. ALL DIMENSIONS IN MILLIMETERS, UNLESS OTHERWISE NOTED.  
2. COAT FLOOR SLEEVE WITH SPECIFIED PAINT SYSTEM PRIOR TO CONCRETE PLACEMENT.  
3. ALL PIPE SUPPORT COMPONENTS SHALL BE DESIGNED FABRICATED FROM STAINLESS STEEL MATERIAL, UNLESS NOTED OTHERWISE.

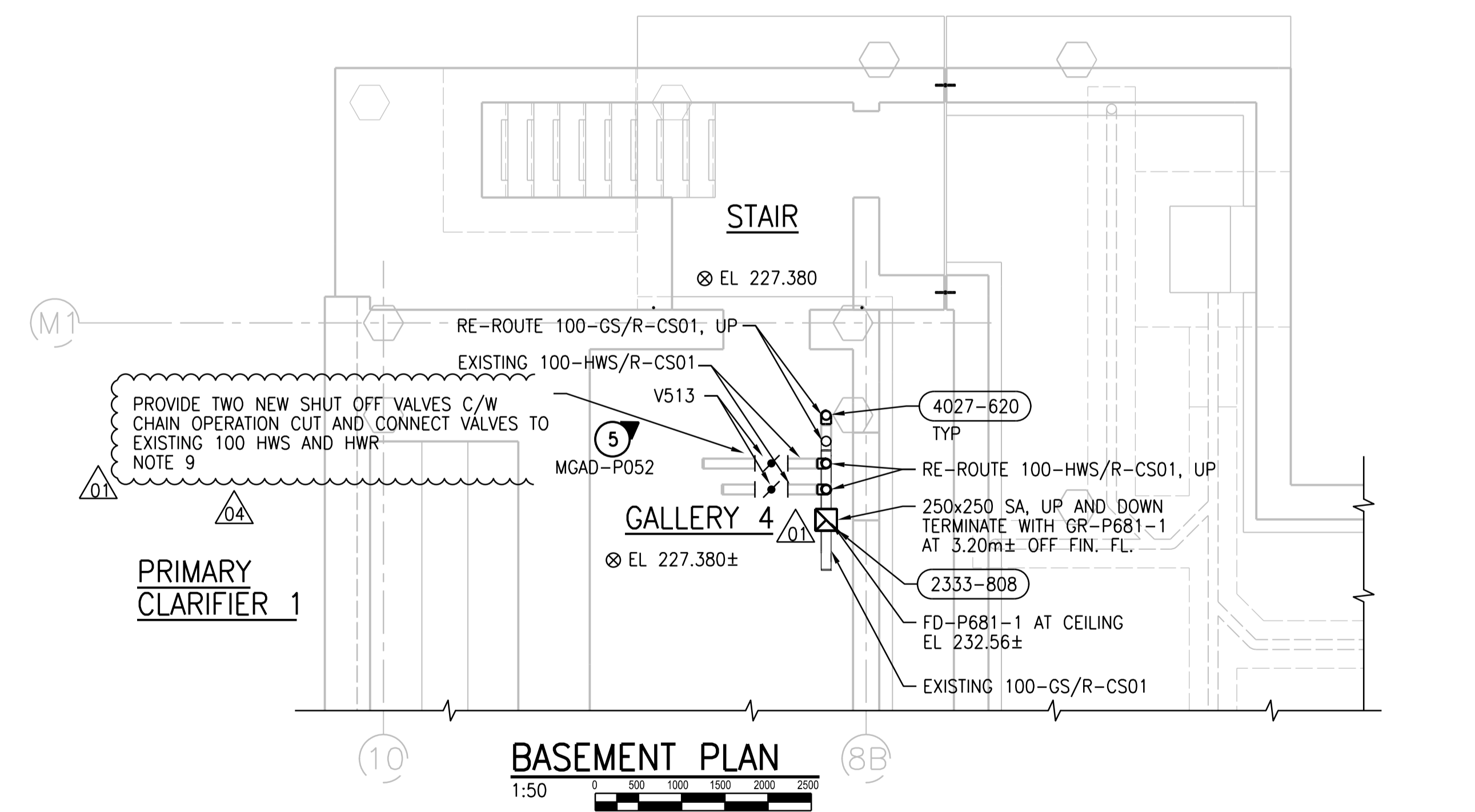
**FLOOR SLEEVE (DRY)**  
NTS

4027-620



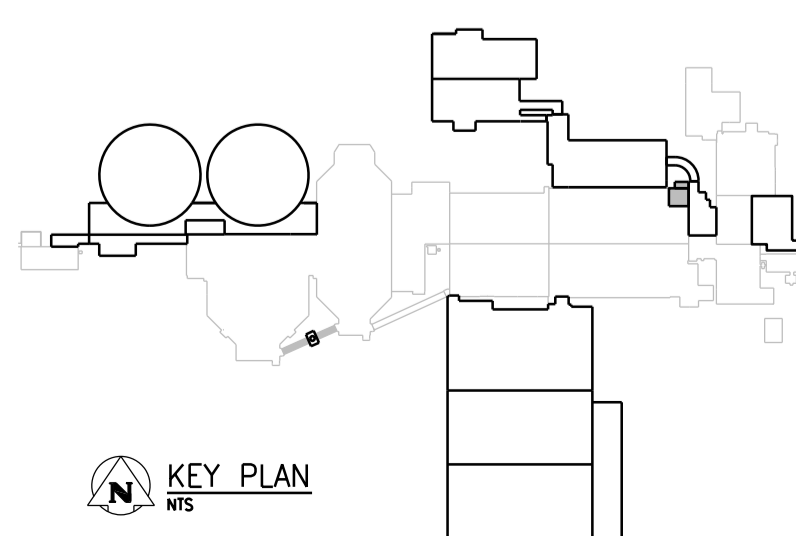
**GROUND FLOOR PLAN**

1:50



**BASEMENT PLAN**

1:50



KEY PLAN  
NTS

**APEGM**  
Certificate of Authorization  
CH2M HILL Canada Ltd.  
No. 1441

NO.	REVISIONS	DATE	DESIGN	CHECK
04	ISSUED FOR ADDENDUM 7 - 976-2016	2017/07/20	JBC	
03	ISSUED FOR CONSTRUCTION - 976/2016	2017/04/05	K.F.	T.T.
02	ISSUED FOR CONSTRUCTION	10/2015	K.F.	T.T.
01	ISSUED FOR ADDENDUM NO. 2	09/2015	K.R.	T.T.
00	ISSUED FOR TENDER	08/2015	K.F.	T.T.

**CH2MHILL**  
SNC-LAVALIN  
DESIGNED BY: D. LE  
DRAWN BY: K. FONG  
SCALE: AS NOTED  
DATE: 2017/04/05  
CONSULTANT NO.: 474248

CHECKED BY: T. TRAN  
APPROVED BY: H.T. FREIHAMMER  
ISSUED FOR CONSTRUCTION  
BY: J. SHUMKA  
DATE: 2017/04/05

ENGINEER'S SEAL  
T.T. TRAN  
Member  
40578  
REGISTERED PROFESSIONAL ENGINEER  
PROVING OF MANITOBA

**THE CITY OF WINNIPEG**  
Winnipeg  
WATER AND WASTE DEPARTMENT  
SOUTH END WATER POLLUTION CONTROL CENTRE  
SEWPCU UPGRADING/EXPANSION PROJECT  
MECHANICAL  
PRIMARY CLARIFIERS  
PARTIAL PLANS  
CITY DRAWING NUMBER: 1-0102-MGAD-P601  
SHEET: 04  
REV.:  
SIZE: A1

PLOT DATE: 2017\07\20

FILE NAME:

©CH2M HILL 2017. ALL RIGHTS RESERVED.