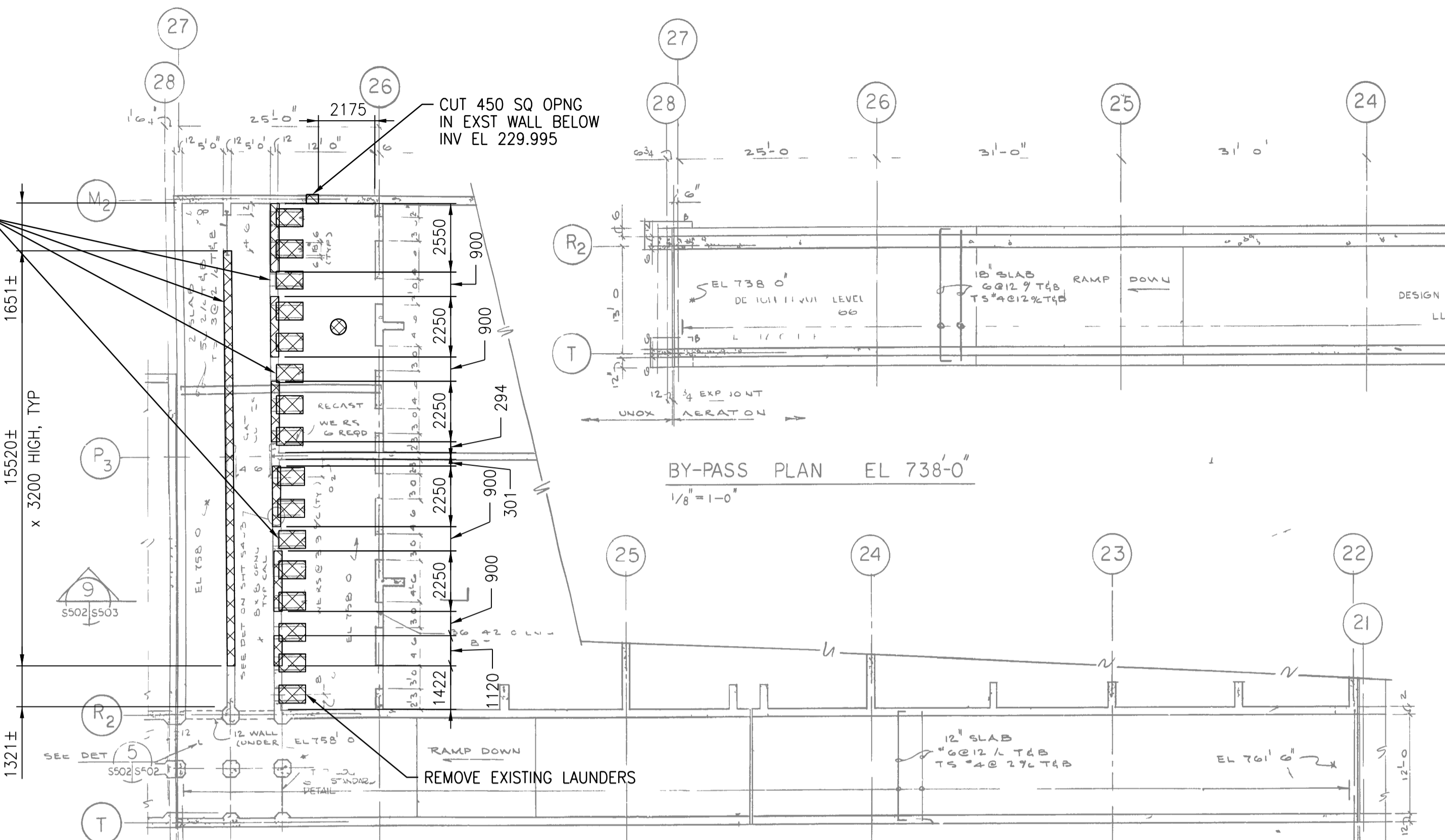
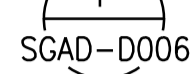
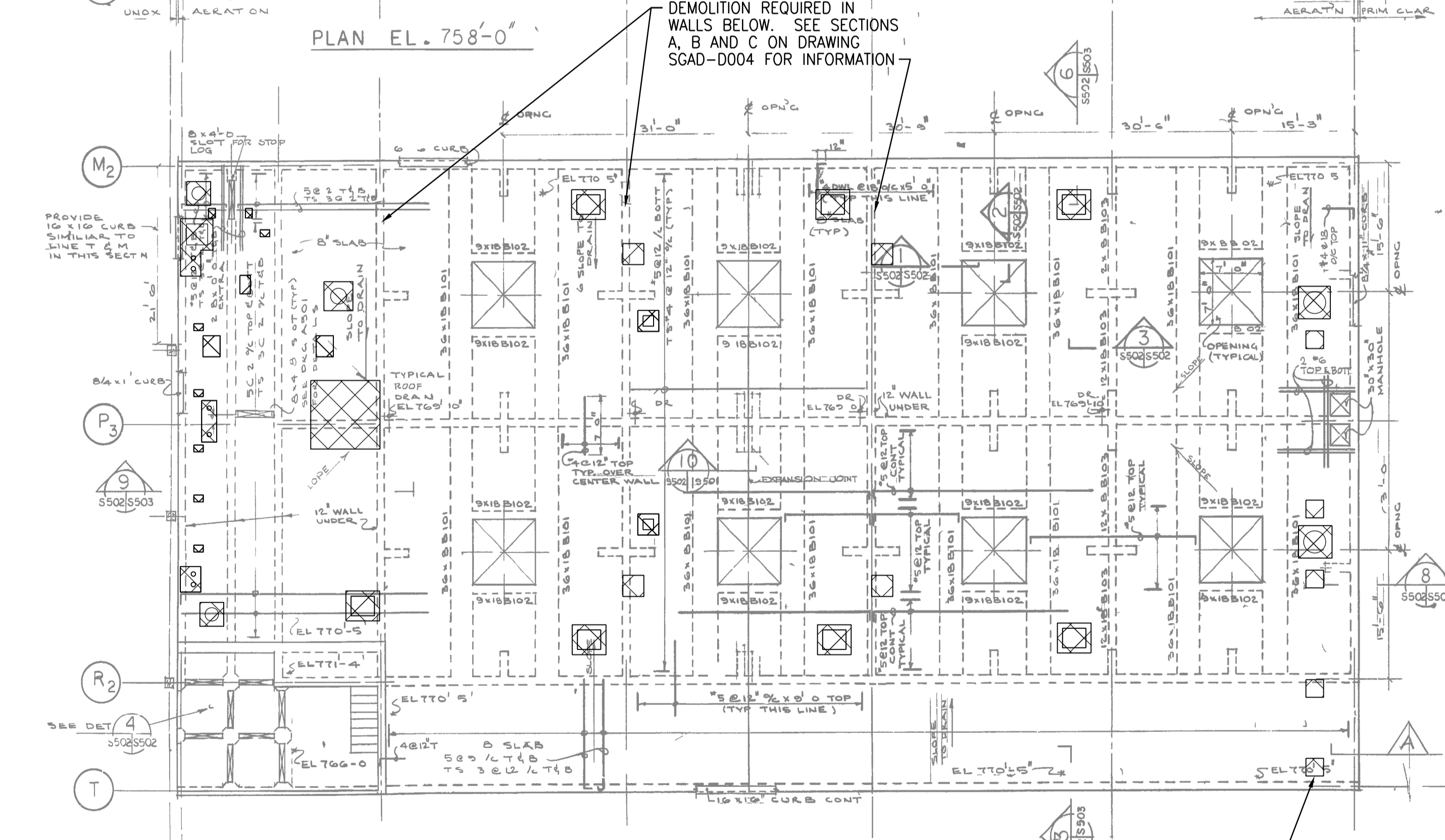


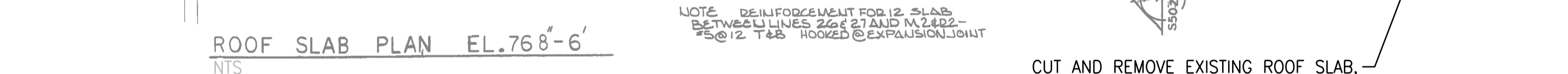
PRIOR TO DEMOLITION WORK ON THESE WALLS, FILL IN EXISTING OPENINGS AS SHOWN ON



BY-PASS PLAN EL 738'-0" 1/8"=1'-0"

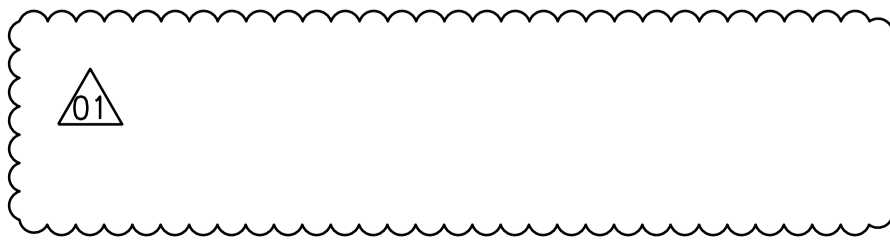


PLAN EL. 758'-0"



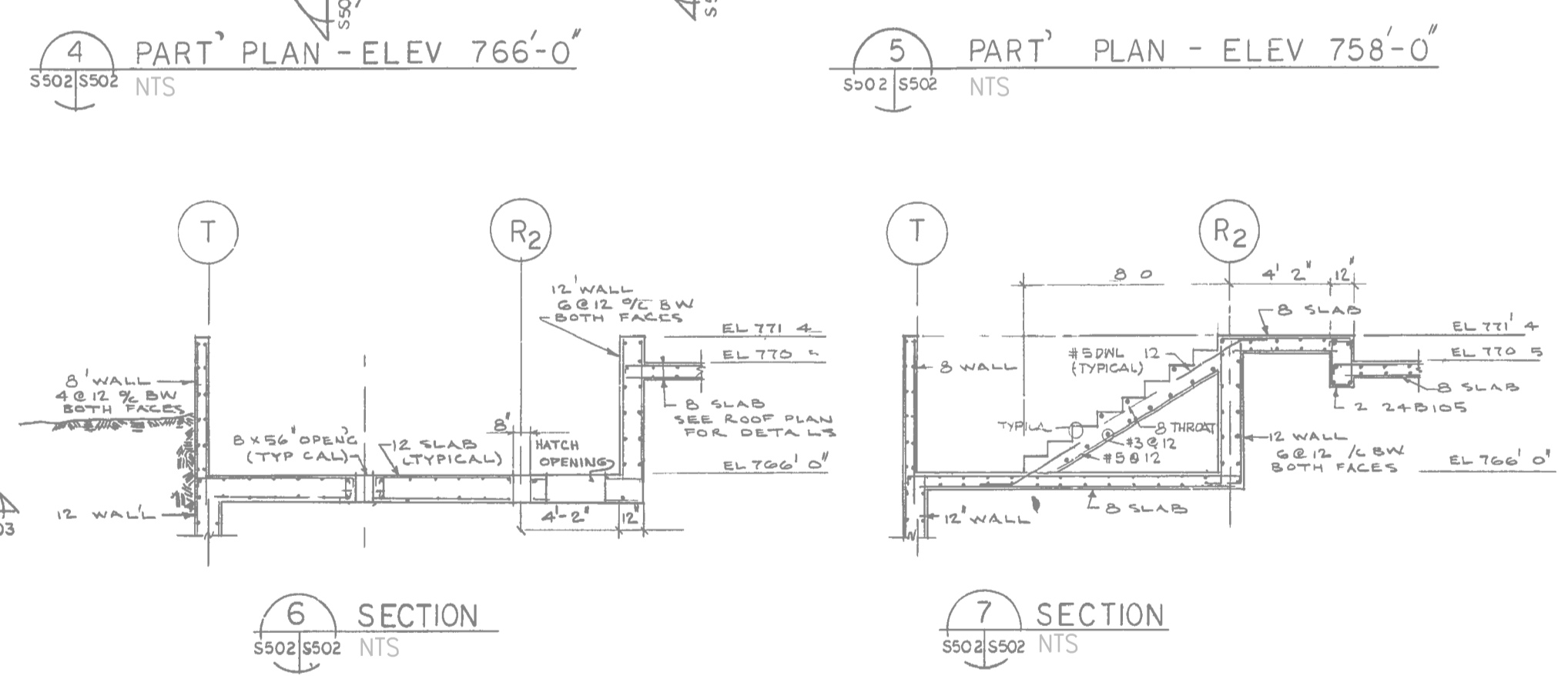
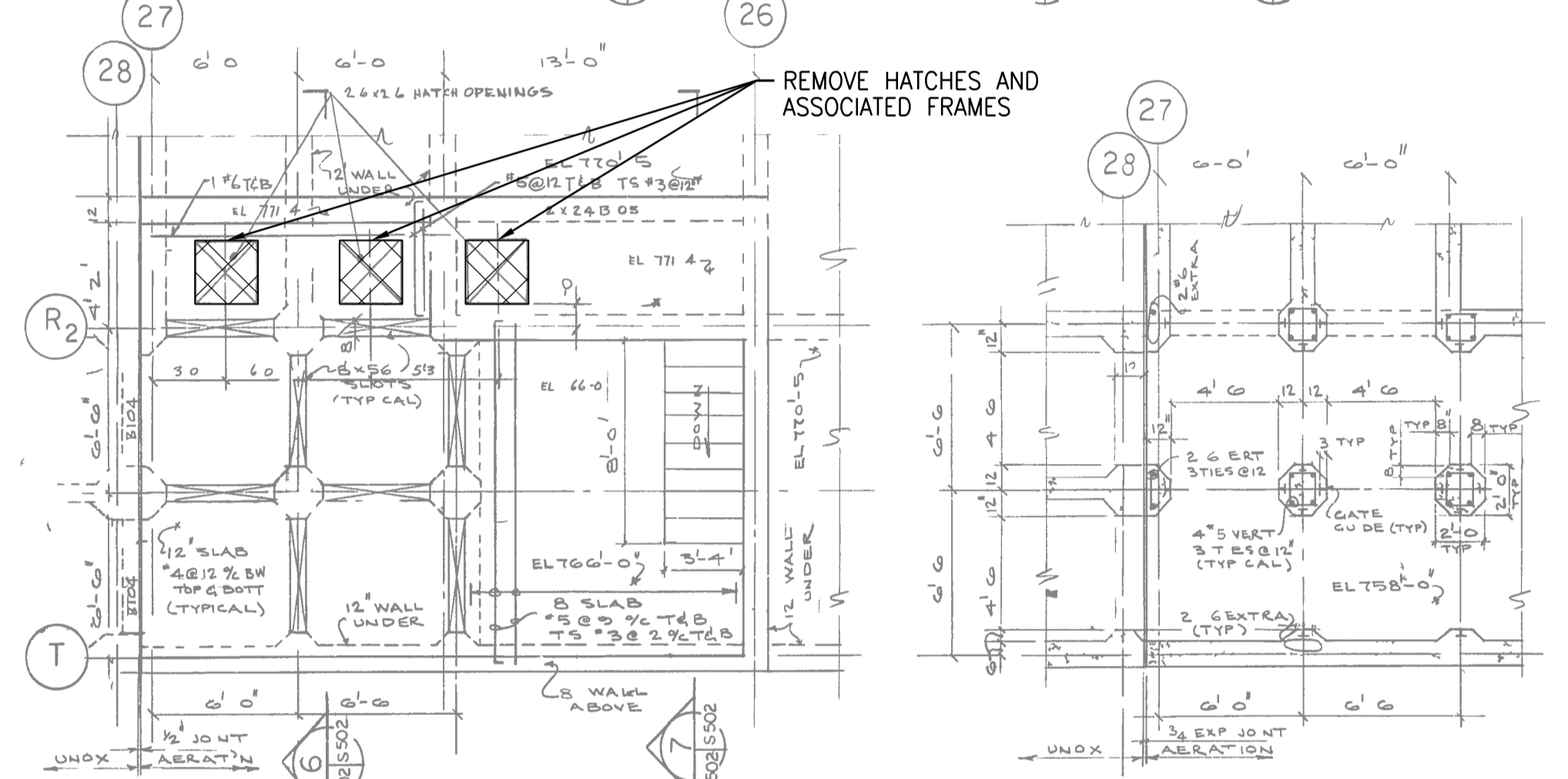
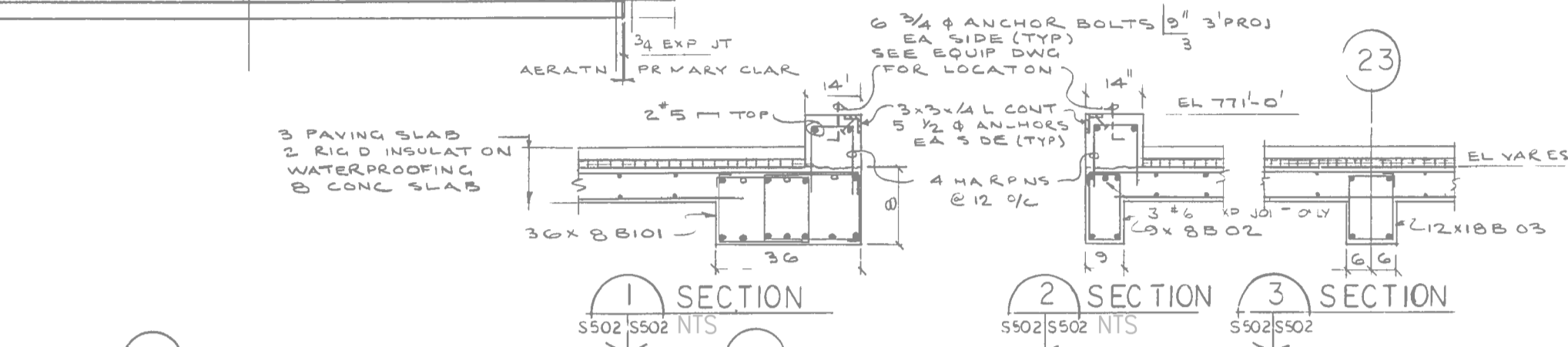
ROOF SLAB PLAN EL.768'-6" NTS

- NOTES:
- FOR NEW CONSTRUCTION SEE STRUCTURAL PRIMARY SLUDGE FERMENTERS/THICKENERS DRAWINGS.
 - REFER TO GENERAL DEMOLITION NOTES DRAWING 1-0102-DAAA-AD01.



CUT AND REMOVE EXISTING ROOF SLAB, CONCRETE TOPPING, INSULATION AND PAVING SLABS FOR INSTALLATION OF NEW PIPING, ACCESS HATCHES, EQUIPMENT PADS AND PIPE SUPPORTS, TYP

MARK	B X D	REINFORCING	REMARKS
B101	36 x 18	4 # TOP CONT 3 # TOP 15' O CIER NT SUPP 4 # BOT 3 # BOT 15' O EA SPAN 3 @ 15' / 4 PA RS	
B102	36 x 18	2 # TOP EXTEND 30' WTB B101 2 # BOT 3 @ 12' / 4	
B103	12 x 18	2 # TOP CONT HOOKED DISCON END 2 # BOT 3 @ 12' / 1	
B104	36 x 12	1 # TOP 1 # BOT 3 @ 2' / 4	
B105	12 x 24	2 # TOP 2 # BOT 3 @ 12' / 4	



SEALING ARCHITECT OR ENGINEER ACCEPTS RESPONSIBILITY ONLY FOR AREAS IDENTIFIED BY CLOUDING ON THIS DRAWING.

NOTE: THIS DRAWING SUPERSEDES DRAWING SEP-67

THE CITY OF WINNIPEG
Winnipeg WATER AND WASTE DEPARTMENT

SOUTH END WATER POLLUTION CONTROL CENTRE
SEWPCU UPGRADING/EXPANSION PROJECT
STRUCTURAL
OXYGEN REACTORS NO. 1 AND NO. 2
PLANS

CITY DRAWING NUMBER 1-0102-SGAD-DD50 SHEET REV. SIZE 01 A1

APEGM
Certificate of Authorization
CH2M HILL Canada Ltd.
No. 1441

NO.	REVISIONS	DATE	DESIGN	CHECK
01	ISSUED FOR ADDENDUM 7 - 976-2016	2017/07/20	JBC	
00	ISSUED FOR CONSTRUCTION - 976-2016	2017/04/05	G.O.	J.C.

CH2MHILL
SNC-LAVALIN
DESIGNED BY: E. LUI
DRAWN BY: G. OMORI
SCALE: NTS
DATE: 2017/04/05
CONSULTANT NO.: 474248

KCS GROUP
CHECKED BY: R. PARIKH
APPROVED BY: H.T. FREIHAMMER
ISSUED FOR CONSTRUCTION BY: J. SHUMKA
DATE: 2017/04/05

ENGINEER'S SEAL
JULY 24, 2017
PROVINCE OF MANITOBA
REGISTERED PROFESSIONAL ENGINEER
LUI
Member 37003