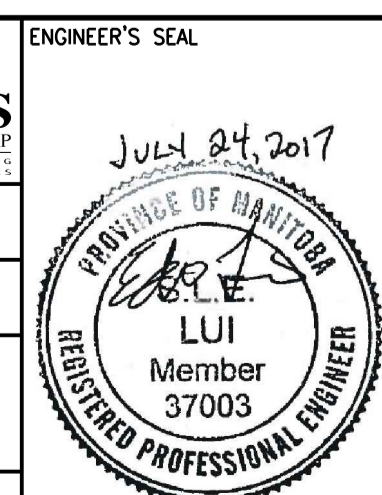


- NOTE:**
- REFER TO GENERAL DEMOLITION NOTES DRAWING 1-0102-DAAA-ADD1.
  - CONFIRMED ASBESTOS CONTAINING MATERIALS IN EXTERIOR WALL PLASTER. REFER TO ASBESTOS ABATEMENT SPECIFICATION FOR ABATEMENT PROCEDURES.
  - COORDINATE DEMOLITION REQUIREMENTS WITH NEW CONSTRUCTION.

SEALING ARCHITECT OR ENGINEER ACCEPTS RESPONSIBILITY ONLY FOR AREAS IDENTIFIED BY CLOUDING ON THIS DRAWING.  
NOTE: THIS DRAWING SUPERSEDES DRAWING SEP-37

**THE CITY OF WINNIPEG**  
WATER AND WASTE DEPARTMENT

SOUTH END WATER POLLUTION CONTROL CENTRE  
SEWPCU UPGRADING/EXPANSION PROJECT  
STRUCTURAL  
GRIT TANKS 3 AND 4, CHANNELS  
OVERALL PLANS



<b>CH2MHILL</b>		ENGINEER'S SEAL	
SNC-LAVALIN		KCS GROUP	
DESIGNED BY: E. LUI	CHECKED BY: R. PARIKH	JULY 24, 2017 PROVINCE OF MANITOBA E. LUI Member 37003 REGISTERED PROFESSIONAL ENGINEER	
DRAWN BY: G. OMORI	APPROVED BY: H.T. FREIHAMMER		
SCALE: NTS	ISSUED FOR CONSTRUCTION BY: J. SHUMKA		
DATE: 2017/04/05	DATE: 2017/04/05		
CONSULTANT NO.: 474248			

NO.	REVISIONS	DATE	DESIGN	CHECK
01	ISSUED FOR ADDENDUM 7 - 976-2016	2017/07/20	JBC	
00	ISSUED FOR CONSTRUCTION - 976-2016	2017/04/05	G.O.	J.C.

**DEMOLITION PLANS**  
NTS

**APEGM**  
Certificate of Authorization  
CH2M HILL Canada Ltd.  
No. 1441

