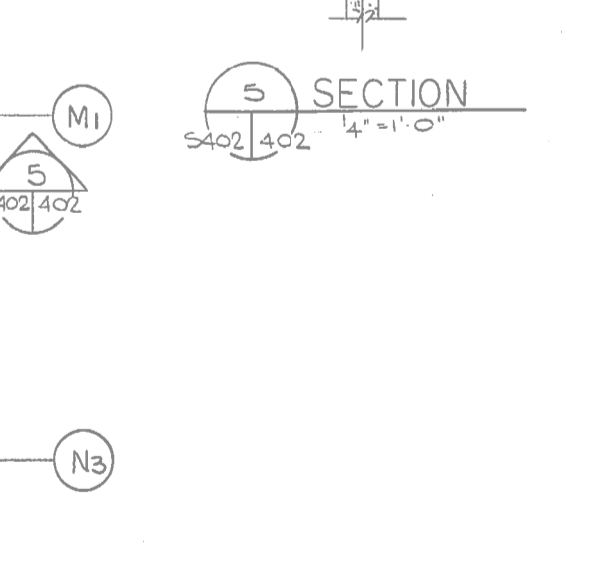
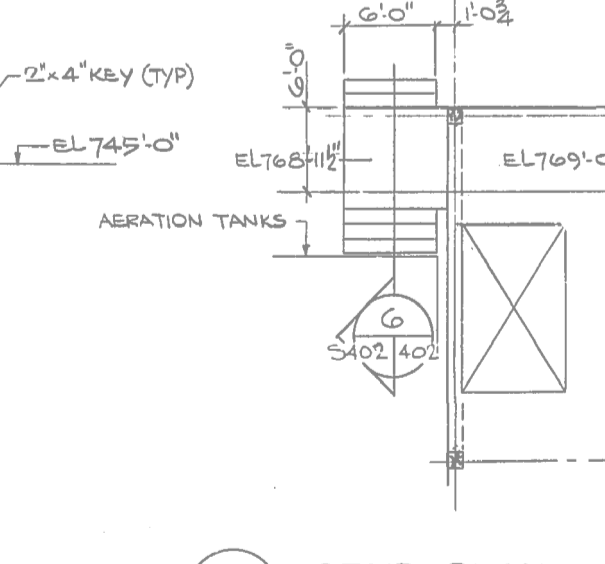
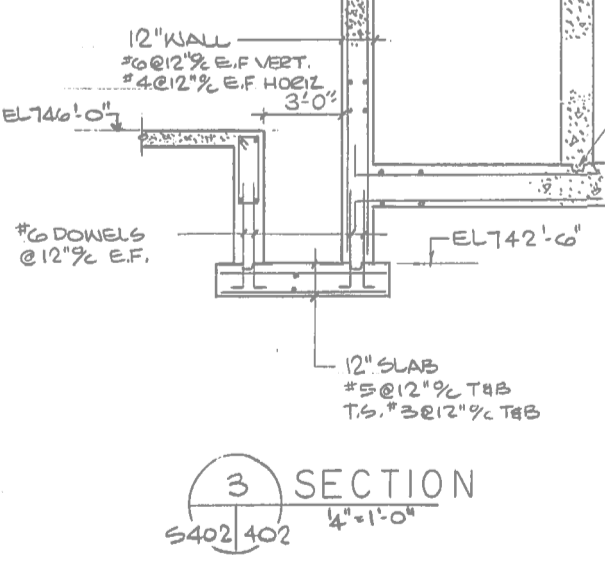
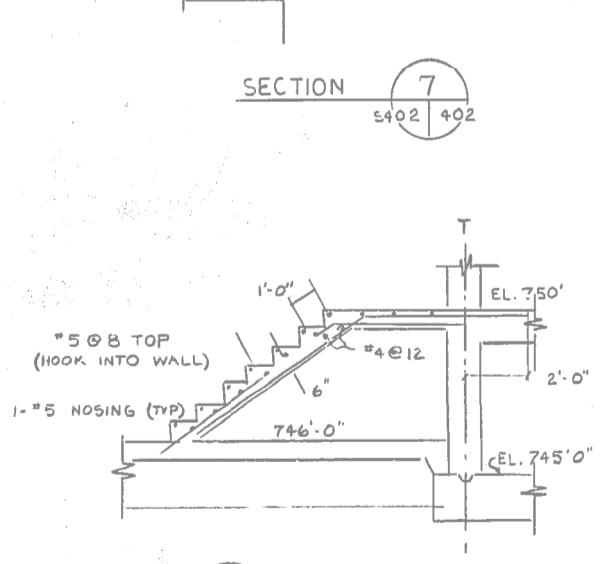
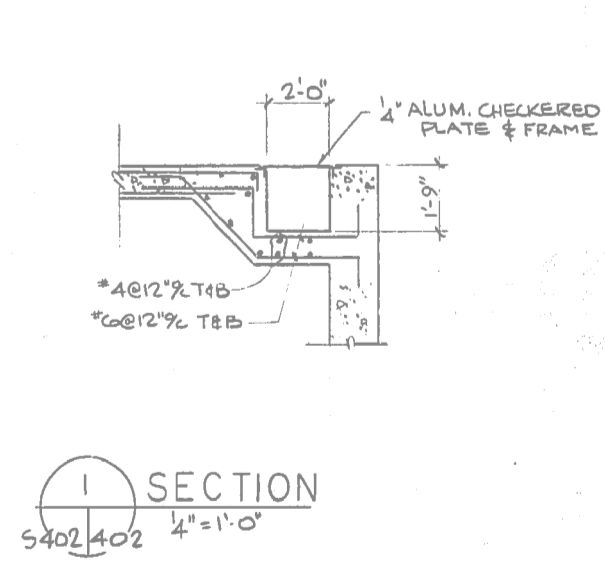


BEAM SCHEDULE			
MARK	B&D	REINFORCING	REMARKS
B201	12-24	3-#8 TOP 3-#8 BTM 3-#2'2"Ø	

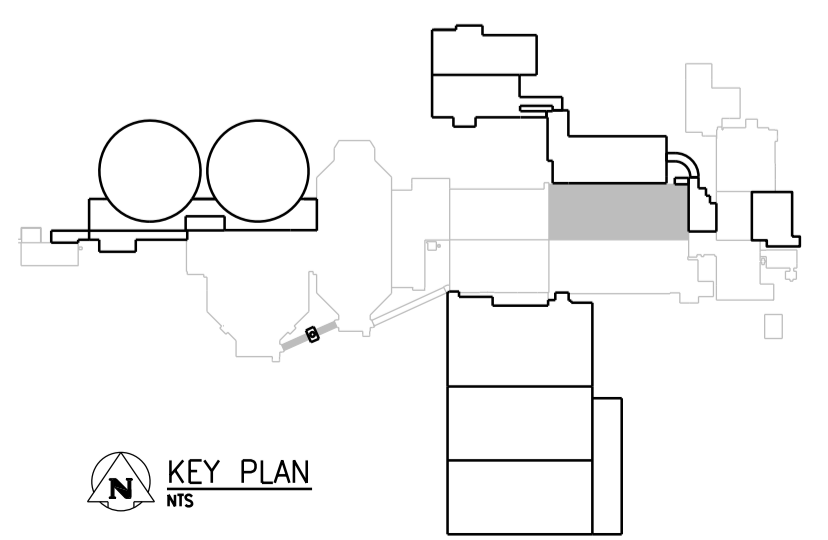
PLAN AT ELEV 753'-3"

PLAN AT ELEV 743'-0"



- NOTES:**
- REFER TO GENERAL DEMOLITION NOTES DRAWING 1-0102-DAAA-A001.
 - COORDINATE DEMOLITION REQUIREMENTS WITH NEW CONSTRUCTION.
 - CONFIRMED ASBESTOS CONTAINING MATERIAL IN EXTERIOR WALL PLASTER. REFER TO ASBESTOS ABATEMENT SPECIFICATIONS FOR ABATEMENT PROCEDURES.

SEALING ARCHITECT OR ENGINEER ACCEPTS RESPONSIBILITY ONLY FOR AREAS IDENTIFIED BY CLOUDING ON THIS DRAWING.
NOTE: THIS DRAWING SUPERSEDES DRAWING SEP-56

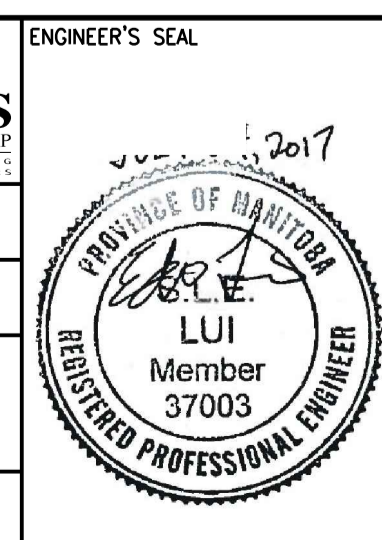


GALLERY AND PLANT BY-PASS PLAN
NTS



NO.	REVISIONS	DATE	DESIGN	CHECK
03	ISSUED FOR ADDENDUM 7 - 976-2016	2017/07/20	JBC	
02	ISSUED FOR CONSTRUCTION - 976-2016	2017/04/05	G.O. J.C.	
01	ISSUED FOR CONSTRUCTION	10/2015	G.O. J.C.	
00	ISSUED FOR TENDER	08/2015	G.O. J.C.	

CH2MHILL
SNC-LAVALIN
DESIGNED BY: E. LUI
DRAWN BY: G. OMORI
CHECKED BY: R. PARIKH
APPROVED BY: E. LUI
SCALE: NTS
ISSUED FOR CONSTRUCTION
DATE: 2017/04/05
CONSULTANT NO.: 474248



THE CITY OF WINNIPEG
WATER AND WASTE DEPARTMENT
SOUTH END WATER POLLUTION CONTROL CENTRE
SEWPPC UPGRADING/EXPANSION PROJECT
STRUCTURAL
PRIMARY CLARIFIERS
GALLERY AND PLANT BY-PASS PLAN
CITY DRAWING NUMBER: 1-0102-SGAD-PD50
SHEET: 03
REV: A1
SIZE: A1