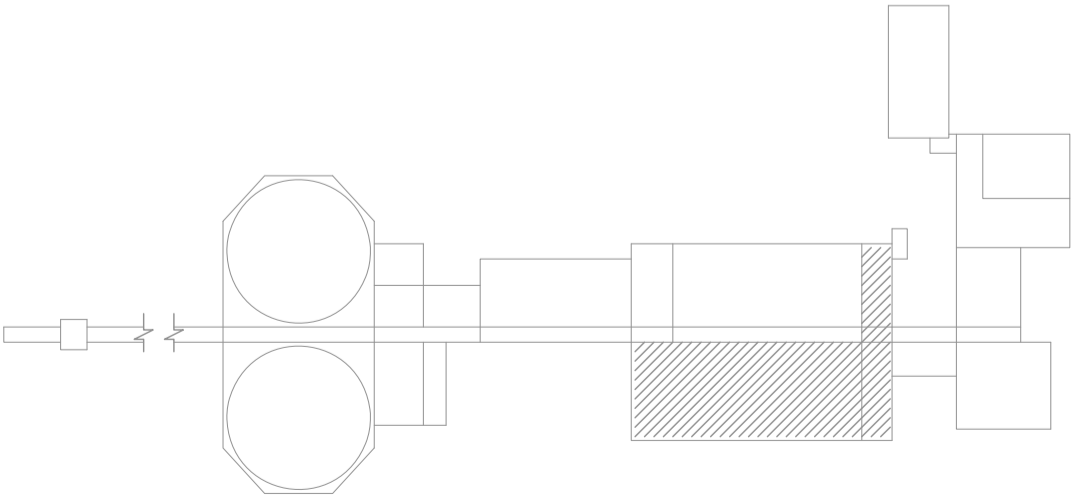


DEMOLISH 2010mm WIDE OPNG IN KNOCK-OUT WALL FROM EL 227.105 TO 229.305m BELOW NOTE 3

- NOTES:**
- REFER TO GENERAL DEMOLITION NOTES DRAWING 1-0102-DAAA-A001.
 - COORDINATE DEMOLITION REQUIREMENTS WITH NEW CONSTRUCTION.
 - CONFIRMED ASBESTOS CONTAINING MATERIALS IN EXTERIOR WALL PLASTER. REFER TO ASBESTOS ABATEMENT SPECIFICATIONS FOR ABATEMENT PROCEDURES.



PLAN ABOVE EL 229.665

AS CONSTRUCTED
 DATE JUNE/91 BY CJA
 APPROVED BY _____

B.M. ELEV. _____ _____ _____		MACLAREN ENGINEERS INC. WARDROP ENGINEERING INC. ENGINEERING CONSULTANTS			THE CITY OF WINNIPEG WORKS AND OPERATIONS DIVISION WATERWORKS, WASTE & DISPOSAL DEPARTMENT
4 ISSUED FOR ADDENDUM 7 - 976-2016 07/17 JBC 3 ISSUED FOR CONSTRUCTION - 976-2016 04/17 GO 2 90% PRELIMINARY REVIEW 12/15 CR 1 AS CONSTRUCTED 06/91 CJA 0 ISSUED FOR TENDER 08/89 EH		DESIGNED BY AL CHECKED BY AL DRAWN BY RL APPROVED BY _____ HOR. SCALE: 1 : 100 VERTICAL: 1 : 100 DATE AUGUST, 1989			
CONSULTANT DRAWING NO. 43525-S102				PLAN ABOVE EL. 229.665	