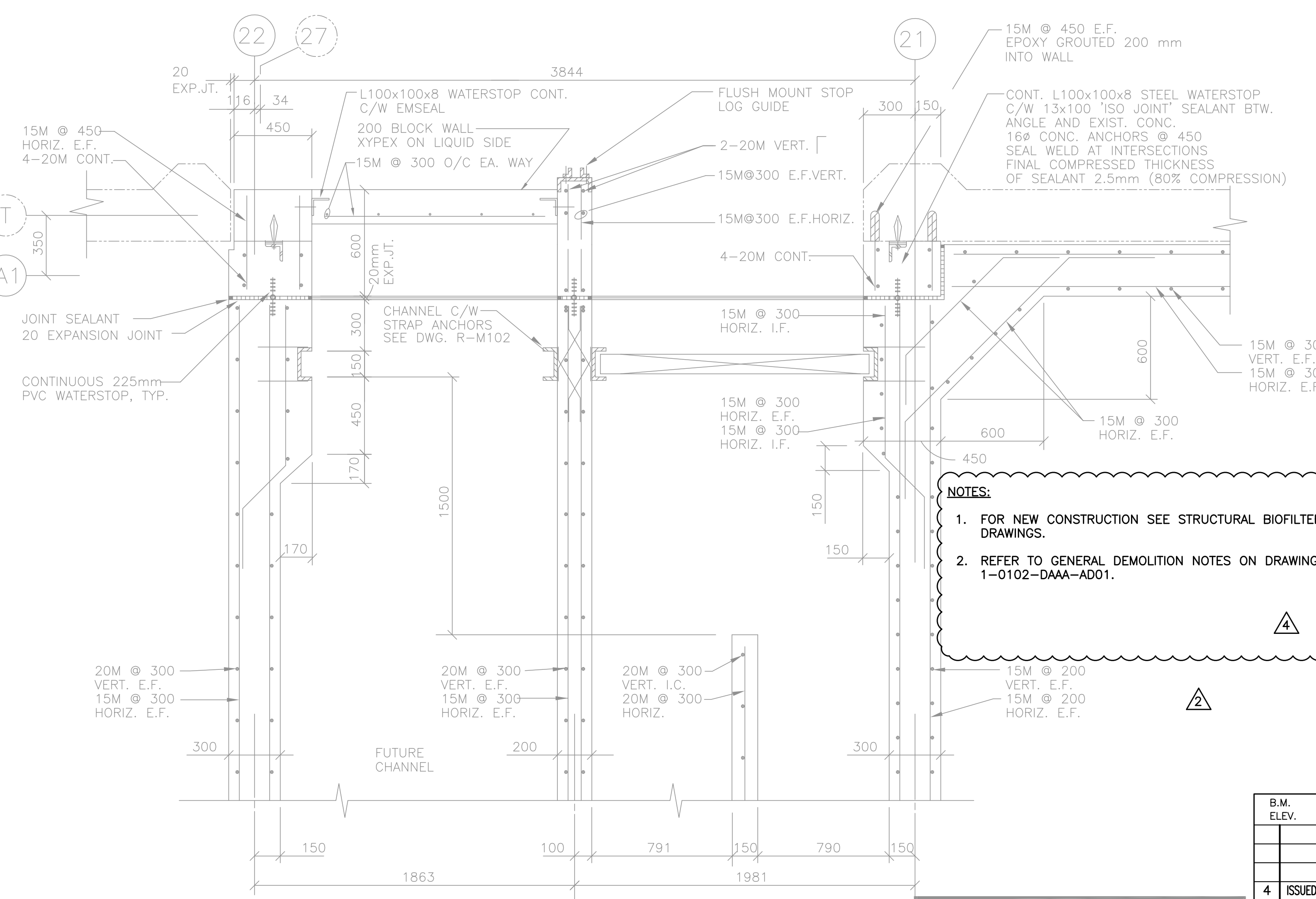
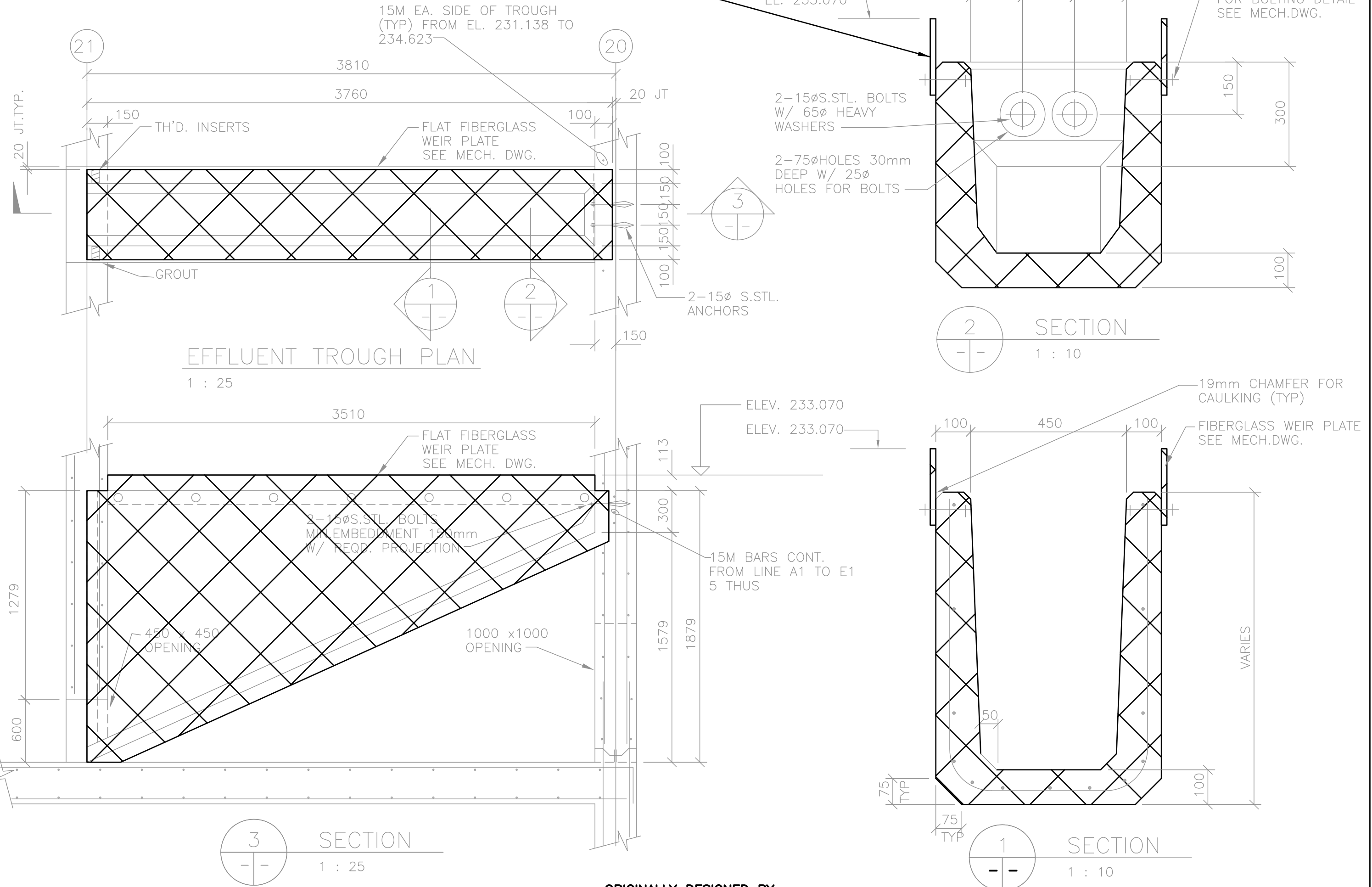


REMOVE EXISTING PRECAST CONCRETE TROUGH AND FLAT FIBERGLASS WEIRS AS NOTED, TYPICAL OF 16 LOCATIONS



NOTES:
 1. FOR NEW CONSTRUCTION SEE STRUCTURAL BIOFILTER DRAWINGS.
 2. REFER TO GENERAL DEMOLITION NOTES ON DRAWING 1-0102-DAAA-AD01.



9 DETAIL AT STOP LOG CHAMBER
 S102 S106 S103 1 : 20

AS CONSTRUCTED
 DATE SEPTEMBER 1993 BY C.J.A.
 APPROVED BY _____

B.M. ELEV.	NO.	REVISIONS	DATE	BY
	4	ISSUED FOR ADDENDUM 7 - 976-2016	07/17	G.O.
	3	ISSUED FOR CONSTRUCTION - 976-2016	04/17	G.O.
	2	ISSUED FOR 60% PRELIMINARY REVIEW	07/16	G.O.
	1	AS CONSTRUCTED	09/93	P.R.B.
	0	ISSUED FOR TENDER	07/90	K.L.
	-	ISSUED FOR APPROVAL	04/90	K.L.

B.M. ELEV.		MAC LAREN ENGINEERS INC. WARDROP ENGINEERING INC.	
ENGINEERING CONSULTANTS			
DESIGNED BY	K.L.	CHECKED BY	
DRAWN BY	B.R.	APPROVED BY	
HOR. SCALE:	AS NOTED	RELEASED FOR CONSTRUCTION:	
VERTICAL:		DATE	JULY 1990

ORIGINALLY DESIGNED BY
 JUL 24 2017

 CONSULTANT DRAWING NO.
 870012-01-19-R-S106

THE CITY OF WINNIPEG
 WORKS AND OPERATIONS DIVISION
 WATERWORKS, WASTE & DISPOSAL DEPARTMENT

SOUTH END WATER POLLUTION CONTROL CENTRE
 OXYGEN REACTOR EXPANSION-STRUCTURAL SECTIONS AND DETAILS

CITY DRAWING NUMBER
 SHEET OF
 SEP-342