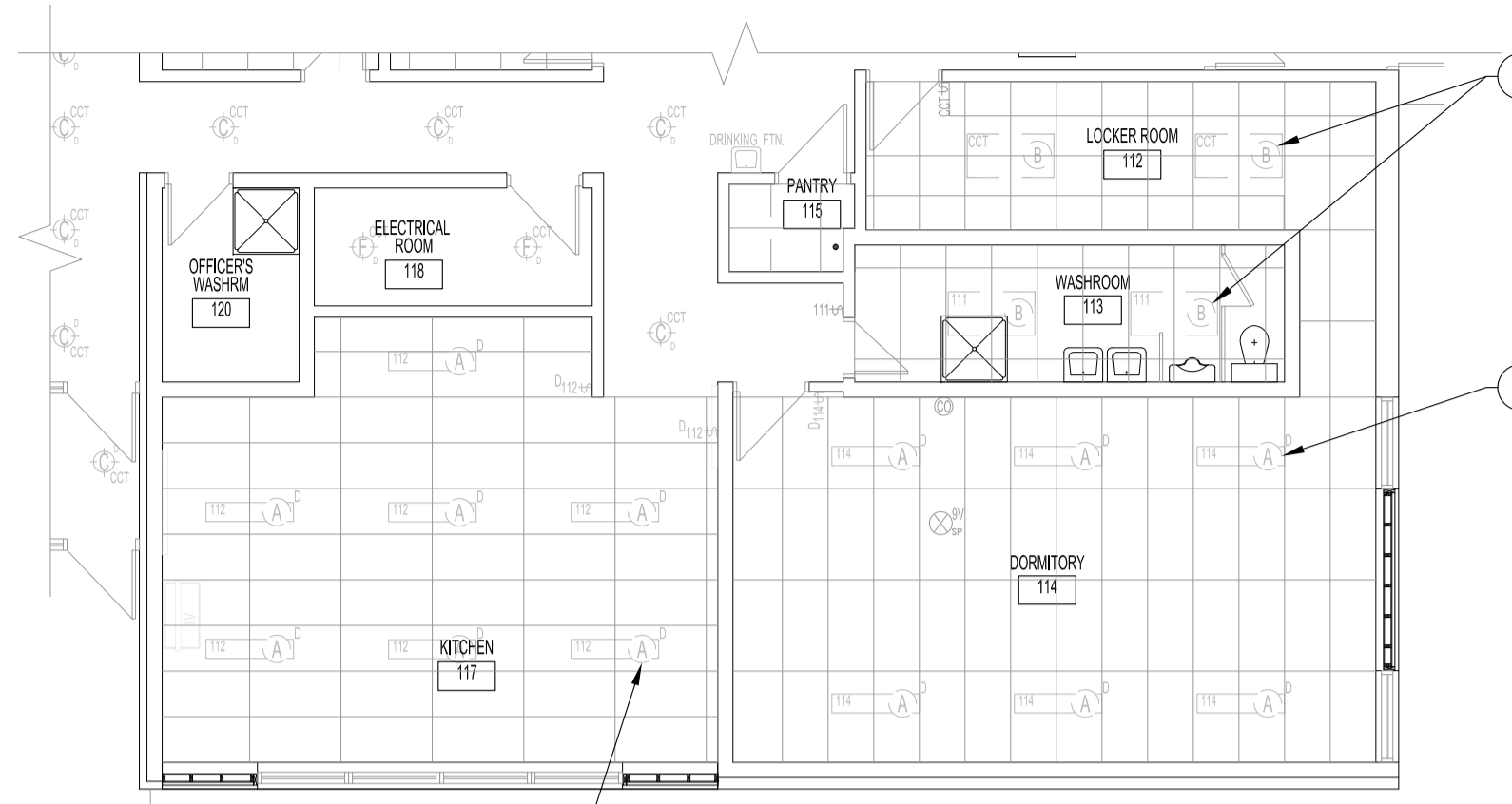
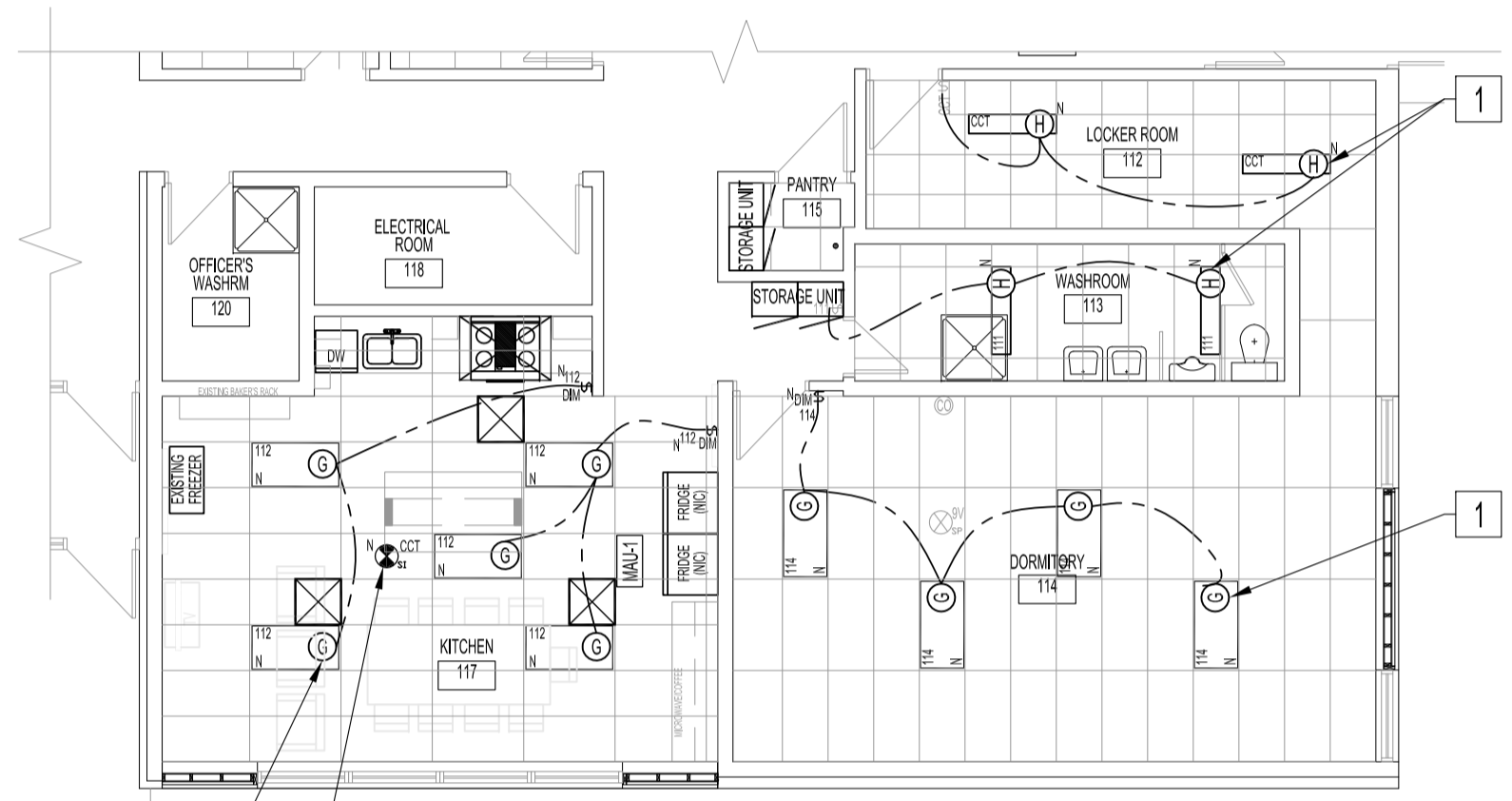


DEMOLITION - MAIN FLOOR PLAN
SCALE: 1/8"=1'-0"



DEMOLITION MAIN FLOOR REFLECTED CEILING PLAN
SCALE: 1/8"=1'-0"



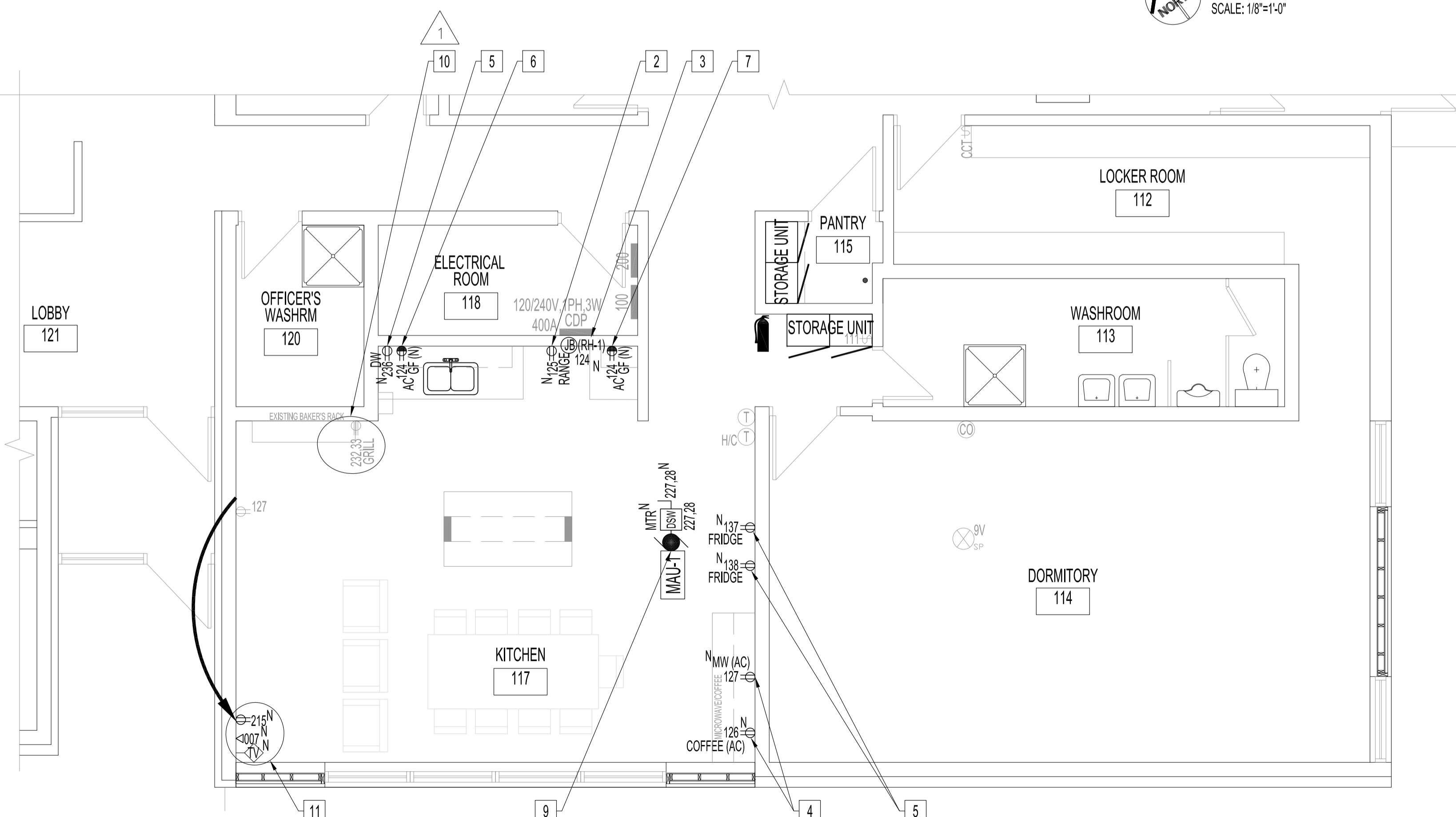
RENOVATION MAIN FLOOR REFLECTED CEILING PLAN
SCALE: 1/8"=1'-0"

ELECTRICAL POWER & SYSTEMS

DEMOLITION NOTES: "x"

ALSO SEE NOTES & SPECIFICATIONS.

1. REPLACE LUMINAIRES & LIGHT SWITCHES IN: KITCHEN, 117; LOCKER, 112; WASHROOM, 113; DORMITORY, 114. SEE RENOVATION NOTES.
2. RELOCATE CIRCUITS FOR APPLIANCES SHOWN IN RENO.
3. RELOCATE RECEPTACLE & CIRCUIT. SEE RENOVATION NOTES.
4. RELOCATE RECEPTABLES TO AC. SEE RENOVATION NOTE.
5. RELOCATE RECEPTACLE LEFT OF NEW SINK. SEE RENOVATION NOTE.
6. RELOCATE RECEPTACLE FOR RANGE RECEPTACLE. SEE RENOVATION NOTE.
7. RELOCATE DW CIRCUIT TO NEW DW LOCATION. SEE RENOVATION NOTE.
8. REMOVE DRINKING FOUNTAIN ELECTRICAL CONNECTION & CIRCUIT BACK TO SOURCE.



RENOVATION - PARTIAL MAIN FLOOR PLAN
SCALE: 1/4"=1'-0"

ELECTRICAL POWER & SYSTEMS

RENOVATION NOTES: "x"

ALSO SEE NOTES & SPECIFICATIONS.
ALL WIRING & CABLING IN CEILING SPACE SHALL BE IN EMT OR AC90 AS PER LATEST CEC.
COORDINATE ALL RECEPTACLE OPENINGS WITH STAINLESS STEEL CABINET MANUFACTURER.

1. REPLACE LUMINAIRES & LIGHT SWITCHES IN KITCHEN, LOCKER (LUMINAIRE ONLY), WASHROOM (LUMINAIRE ONLY) & DORMITORY WITH TYPE SHOWN. WIRE TO NEW DIMMER SWITCH WITH 0-10V CONTROL.
2. PROVIDE DEDICATED RANGE RECEPTACLE. 120V, 15A CIRCUIT, #12/2 RW90 IN EMT TO 15A-1P BREAKER. MOUNT HEIGHT TO ALLOW RANGE INSTALLATION.
3. PROVIDE JUNCTION BOX & CONNECT RANGE HOOD EXHAUST FAN, (RH-1) SEE MECHANICAL DRAWING, TO EXISTING CIRCUIT SHOWN.
4. PROVIDE DEDICATED APPLIANCE (AC) IN-WALL RECEPTABLES & CIRCUITS SHOWN, 120V, 15A CIRCUIT, #12/2 RW90 IN BX (IN-WALL) & EMT TO 15A-1P BREAKER.
5. PROVIDE DEDICATED APPLIANCE IN-WALL RECEPTABLES & CIRCUITS SHOWN, 120V, 15A CIRCUIT, #12/2 RW90 BX (IN-WALL) & EMT TO 15A-1P BREAKER. CONFIRM LOCATIONS WITH CONTRACT ADMINISTRATOR.
6. RELOCATED RECEPTACLE LEFT OF NEW SINK WITH NEW GFCI RECEPTACLE.
7. PROVIDE AC GFCI RECEPTACLE, 120V, 15A CIRCUIT, #12/2 RW90 IN EMT TO 15A-1P BREAKER.
8. PROVIDE CEILING-MOUNTED SMOKE DETECTOR, 120V WITH BATTERY BACK-UP. WIRE TO ADJACENT CIRCUIT.
9. PROVIDE DISCONNECT SWITCH & 240V, 50A CIRCUIT, #6/3 RW90 IN EMT TO 50A-2P CIRCUIT BREAKER. USE CURRENT SENSOR ON MAU-1 TO INTERLOCK, MAU-1, WITH RANGE HOOD, RH-1, AS PER MANUFACTURER INSTRUCTIONS

10. REINSTALL RECEPTABLES IN NEW CONFIGURATION WITH NEW WIREMOLD SYSTEM, LEGRAND 2400, STEEL, COLOUR - FOG WHITE, WITH LOW PROFILE DEVICE BOXES. NEW ROUTE TO MINIMIZE INSTALLATION VIEW. CONFIRM ROUTING WITH CONTRACT ADMINISTRATOR.
11. RELOCATE EXISTING RECEPTACLE, DATA PORT & COAXIAL CABLES TO NEW LOCATION SHOWN. PROVIDE LARGER RACEWAY TO ACCOMMODATE POWER & SYSTEM WITH TWO CHANNEL LEGRAND 2400, STEEL, COLOUR - FOG WITH LOW PROFILE DEVICE BOXES.

No.	REVISION/DESCRIPTION	BY	DATE
1	ISSUE FOR ADDENDUM 1: REVISED RENO NOTE 10 & ADDED RENO ARROW. ADDED NOTE 11.	DTA	2017.12.04
0	ISSUE FOR CONSTRUCTION	DTA	2017.11.15

SEAL



DRAWN	DATE	CHECKED	DESIGNED	APPROVED
	2017.10.23			

THE CITY OF WINNIPEG
PLANNING, PROPERTY AND
DEVELOPMENT DEPARTMENT
MUNICIPAL ACCOMMODATIONS DIVISION
3-65 GARRY STREET, R3C 4K4

PROJECT
WINNIPEG FIRE PARAMEDIC SERVICES
STATION No.8
INTERIOR RENOVATIONS
640 KIMBERLY AVENUE BID OPP: 1013-2017

SHEET TITLE
MAIN FLOOR PLAN
DEMOLITION AND RENOVATION
POWER AND SYSTEMS

SCALE	PROJECT No:	SHEET No:
AS SHOWN	2016-008	E2R1