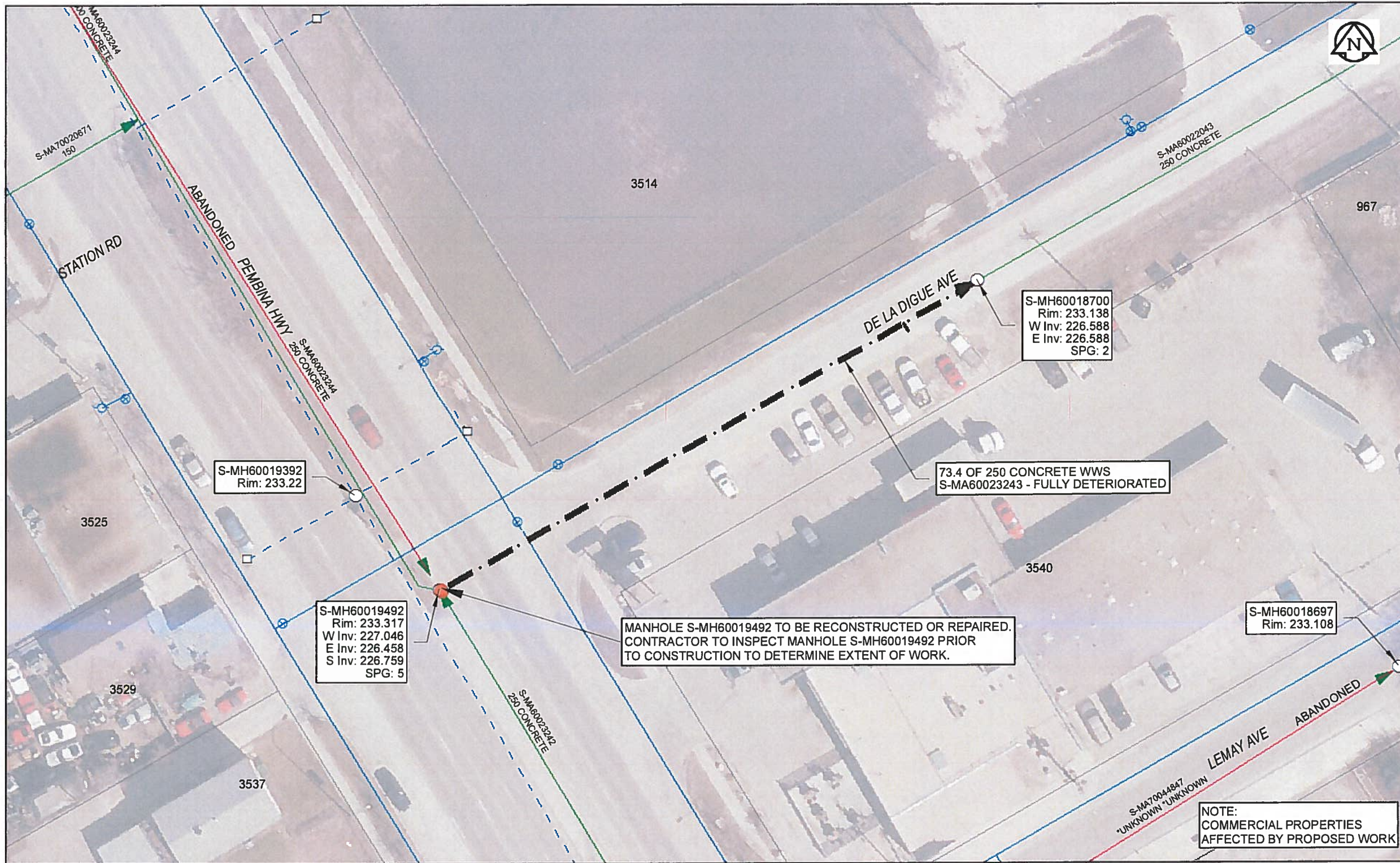


B SIZE 11" X 17" (279mm x 432mm)



Sewer Junction Information
(From Video Inspection)

Reference MH	Distance	Size	Clock
S-MH60018700	010.0	100	10

Traffic Controls
Regional Street Lane Closure Required: Yes
Impacted Regional Street: Pembina Hw

General Requirements
Maintain minimum two lanes of traffic in both directions on regional street.

WARNING
IF POWER EQUIPMENT OR EXPLOSIVES ARE TO BE USED FOR EXCAVATION ON THIS PROJECT, THE CONTRACTOR MUST:
1) NOTIFY THE GAS COMPANY OF THE PROPOSED LOCATION OF EXCAVATION.
2) TAKE PRECAUTION TO AVOID DAMAGE TO GAS COMPANY INSTALLATIONS.
SEE PROVINCIAL REGULATION 140/92 FOR DETAILS

APEGM
Certificate of Authorization
AECOM Canada Ltd.
No. 4671 Date: April 19/17

METRIC
WHOLE NUMBERS INDICATE MILLIMETRES
DECIMALIZED NUMBERS INDICATE METRES
0 2.5 5 10 15 20
Meters
BID OPPORTUNITY NO. 261-2017

NOTE:
COMMERCIAL PROPERTIES
AFFECTED BY PROPOSED WORK

AECOM REVIEW DRFT CHK FILE NAME: 2016 Lining.pdf SAVED BY: JD

LOCATION APPROVED UNDERGROUND STRUCTURES

SUPR. U/G STRUCTURES COMMITTEE	DATE

NOTE:
LOCATION OF UNDERGROUND STRUCTURES AS SHOWN ARE BASED ON THE BEST INFORMATION AVAILABLE. BUT NO GUARANTEE IS GIVEN THAT ALL EXISTING UTILITIES ARE SHOWN OR THAT THE GIVEN LOCATIONS ARE EXACT. CONFIRMATION OF EXISTENCE AND EXACT LOCATION OF ALL SERVICES MUST BE OBTAINED FROM THE INDIVIDUAL UTILITIES BEFORE PROCEEDING WITH CONSTRUCTION.

Can-Net GPS Reference Station WINN/810

NO.	REVISIONS	YY/MM/DD	BY
1	ISSUED FOR ADDENDUM 1	19/04/17	JD
0	ISSUED FOR CONSTRUCTION	10/04/17	JD

AECOM

DESIGNED BY	NK	CHECKED BY	CM
DRAWN BY	CLC	APPROVED BY	AN
HOR. SCALE	1:500	RELEASED FOR CONSTRUCTION	K. Zurek
VERT. SCALE	N/A	DATE	Apr 10/17

PROFESSIONAL'S SEAL
PROVINCE OF MANITOBA
A.D.
BRAUN
Member
24153
REGISTERED ENGINEER
CONSULTANT DRAWING NO.
60516898-01-C-2016 Lining 72-R0X.mxd

THE CITY OF WINNIPEG
Winnipeg WATER AND WASTE DEPARTMENT

2016 SEWER RENEWALS BY CIPP LINING CONTRACT 3 DE LA DIGUE AV
MH AT PEMBINA HW TO 1ST MH E OF PEMBINA HW

SHEET 72 OF 82
CITY DRAWING NUMBER
11453 REV 1