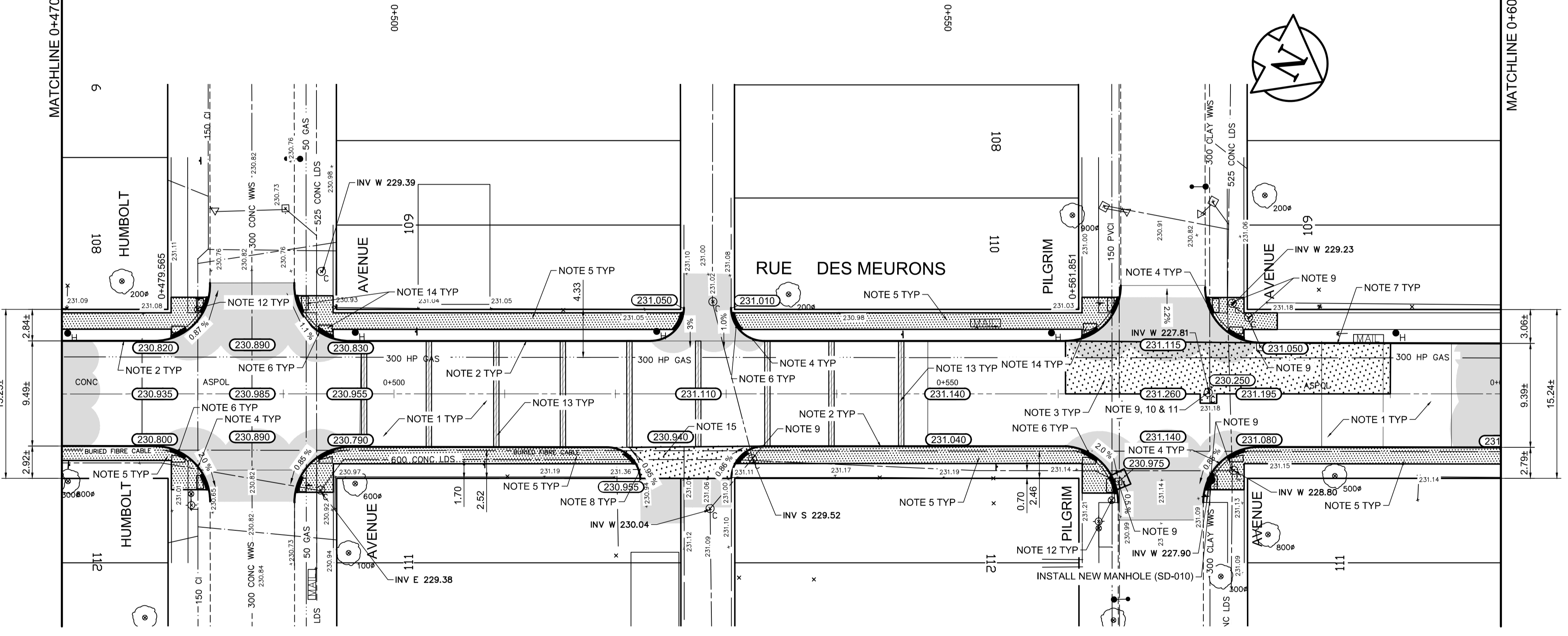


- REFERENCE NOTES**
- A. PAVEMENT DIMENSIONS ARE TO BACK OF CURB
 - B. BASELINE IS CENTRE LINE RIGHT-OF-WAY
 - C. PROPERTY LINES OBTAINED FROM CITY OF WINNIPEG L.B.I.S., AND NO SCALE FACTOR WAS APPLIED
 - D. REFER TO AECOM FIELD BOOK NO. 4977

- CONSTRUCTION NOTES**
1. PLACE NEW ASPHALTIC PAVEMENT TYPE 1A (AVG THICKNESS 85mm)
 2. RENEW EXISTING BARRIER CURB (100mm REVEAL HT. DOWELED)
 3. REMOVE EXISTING CONCRETE PAVEMENT AND CONSTRUCT NEW 150mm REINFORCED CONCRETE PAVEMENT *c/w* ASPHALTIC OVERLAY
 4. REMOVE EXISTING BARRIER CURB AND CONSTRUCT NEW CONCRETE MODIFIED BARRIER CURB (150mm REVEAL HT. DOWELED)
 5. RENEW EXISTING 100mm CONCRETE SIDEWALK
 6. CONSTRUCT CURB RAMP (10mm REVEAL HT. MONOLITHIC)
 7. CONSTRUCT NEW CONCRETE BARRIER CURB (100mm REVEAL HT. SEPERATE)
 8. CONSTRUCT NEW CONCRETE MODIFIED BARRIER CURB (150mm REVEAL HT. INTEGRAL)
 9. ADJUST EXISTING MANHOLE/CATCHBASIN TO GRADE
 10. REMOVE EXISTING FRAME AND COVER AND INSTALL NEW FRAME AND SOLID COVER (AP-006 & AP-007)
 11. INSTALL NEW CAST IRON RISER RING
 12. ADJUST EXISTING WATER VALVE TO GRADE
 13. PARTIAL DEPTH PLANING OF EXISTING JOINTS AND ASPHALT PATCHING OF EXISTING JOINTS USING TYPE 1A
 14. INSTALL NEW DETECTABLE WARNING SURFACE TILES
 15. REMOVE EXISTING CONCRETE PAVEMENT AND CONSTRUCT NEW 150mm REINFORCED CONCRETE PAVEMENT



AECOM
 Certificate of Authorization
 AECOM Canada Ltd.
 No. 4671 Date: _____

METRIC
 WHOLE NUMBERS INDICATE MILLIMETRES
 DECIMALIZED NUMBERS INDICATE METRES

150 mm W.M.		300mm L.D.S.		250mm W.W.S.		150 mm W.M.		300mm L.D.S.		250mm W.W.S.		HYDRO		PROPERTY LINE		SURVEY BAR		ELEVATION		TREE		SIDEWALK RAMP		CONCRETE SIDEWALK		FENCE									
◊	WATERMAIN	◊	LAND DRAINAGE SEWER	◊	WASTEWATER SEWER	◊	MANHOLE	◊	CATCH BASIN	◊	CATCH PIT	◊	JUNCTIONS	◊	CULVERT	◊	GAS	—	EXISTING	—	LEGEND - PLAN	—	PROPOSED	—	EXISTING	—	LEGEND - PLAN	—	PROPOSED	—	EXISTING	—	LEGEND - PROFILE	—	PROPOSED

LOCATION APPROVED UNDERGROUND STRUCTURES

SUPV. U/G STRUCTURES COMMITTEE DATE

NOTE:
 LOCATION OF UNDERGROUND STRUCTURES AS SHOWN ARE BASED ON THE BEST INFORMATION AVAILABLE, BUT NO GUARANTEE IS GIVEN THAT ALL EXISTING UTILITIES ARE SHOWN OR THAT THE GIVEN LOCATIONS ARE EXACT. CONFIRMATION OF EXISTENCE AND EXACT LOCATION OF ALL SERVICES MUST BE OBTAINED FROM THE INDIVIDUAL UTILITIES BEFORE PROCEEDING WITH CONSTRUCTION.

B.M. 52-054 85R410 S.W. Cor. Des Meurons & Vivian Ave., 10ft. on top of 0.05 m dia. x 2.4 m iron pipe, beneath ELEV. 231.032 Valve Box, 1.8 m E. of W.L. of Rue des Meurons & on S.L. of Vivian

NO.	REVISIONS	DATE	BY
1	MISCELLANEOUS REVISIONS	05/15/17	BC
0	ISSUED FOR TENDER	05/10/17	BC
A	ISSUED FOR REVIEW	05/01/17	BC

AECOM

DESIGNED BY: JT
 CHECKED BY: TDW/BC
 DRAWN BY: BC/PB
 APPROVED BY:
 HOR. SCALE: 1:250
 VERTICAL: 1:10
 RELEASED FOR CONSTRUCTION BY:
 DATE: _____

ENGINEER'S SEAL
 PROVINCE OF MANITOBA
K.W. RAE
 REGISTERED PROFESSIONAL ENGINEER
 CONSULTANT DRAWING NO. CT-04

THE CITY OF WINNIPEG
 PUBLIC WORKS DEPARTMENT
 ENGINEERING DIVISION

2017 LOCAL STREET RENEWAL PROGRAM

RUE DES MEURONS - REGAL AVENUE / VIVIAN AVENUE
 PAVEMENT REHABILITATION
 STATION 0+470 TO STATION 0+600

CITY DRAWING NUMBER SHEET 04 OF 27