

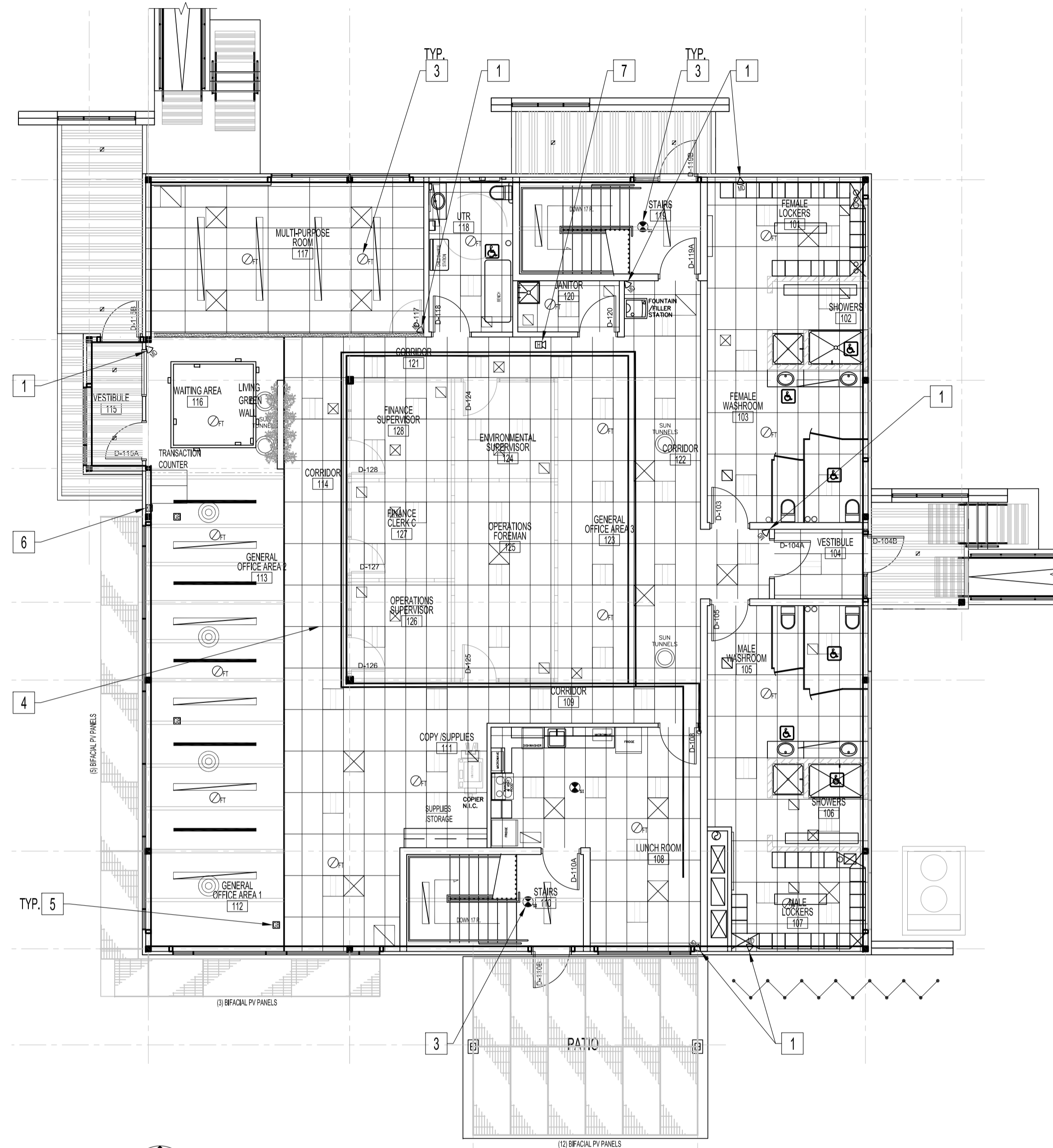
**BASEMENT REFLECTED CEILING PLAN
INTRUSION ALARM AND MONITORING SYSTEMS**

LUMINAIRES AND SOME EQUIPMENT ARE SHOWN FOR CLARITY AND NOT PART OF THE REQUIREMENT FOR THIS REFERENCE DRAWING.
SCALE 1:100

INTRUSION ALARM AND MONITORING SYSTEMS NOTES: "X"

SUPPLIED & INSTALLED BY OTHERS.
ALSO SEE NOTES & SPECIFICATIONS (FOR REFERENCE USE ONLY).
ALL WIRING & CABLING SHALL BE CONCEALED IN DOOR JAMB &/OR IN WALL CAVITY FOR FINISH SPACES. ALL WIRING & CABLING IN CEILING SPACE SHALL BE PLENUM RATED AS PER LATEST CEC.

1. MOTION DETECTORS MOUNTED 2400mm AFF.
2. HIGH LEVEL ALARM CONNECT TO DRY CONTACTS OF SUMP PUMP CONTROL TO MONITORING PANEL.
3. HEAT OR SMOKE DETECTORS CONNECT TO MONITORING PANEL.
4. CABLE TRAY FOR ROUTING WIRING/CABLING OF INTRUSION ALARM & MONITORING SYSTEM COMPONENTS.
5. GLASS BREAKER DETECTOR CONNECT TO MONITORING PANEL.
6. KEY PAD/STATUS DISPLAY CONNECT TO BUILDING ALARM CONTROL PANEL (BACP) IN BASEMENT NETWORK ROOM.
7. SECURITY HORN IN CEILING SPACE CONNECT TO BACP.
8. PROVIDE IN-DUCT SMOKE DETECTOR & ALL NECESSARY COMPONENTS TO BE MOUNTED ON AHU-1 RETURN DUCT. WIRE WITH RELAY & ALL NECESSARY COMPONENTS TO BUILDING ALARM CONTROL PANEL, HEAT & SMOKE DETECTOR CONTACTS. CONFIGURE TO SHUT-DOWN AHU-1 WHEN HEAT &/OR SMOKE DETECTOR IS ACTIVATED.



**MAIN FLOOR REFLECTED CEILING PLAN
INTRUSION ALARM AND MONITORING SYSTEMS**

LUMINAIRES AND SOME EQUIPMENT ARE SHOWN FOR CLARITY AND NOT PART OF THE REQUIREMENT FOR THIS REFERENCE DRAWING.
SCALE 1:100

- NOTES:**
1. THESE DRAWINGS SHALL NOT BE SCALED. CONSULT WITH CONTRACT ADMINISTRATOR ON ANY CONCERNS.
 2. THIS DRAWING IS FOR REFERENCE USE ONLY BY THIRD PARTY INTRUSION MONITORING ALARM COMPANY TO COORDINATE THEIR SUPPLY AND INSTALLATION OF INTRUSION DEVICES, MONITORING DEVICES & ROUTING OF CABLING DURING THIS PROJECT CONSTRUCTION STAGE. THE COORDINATION BETWEEN THIS PROJECT SCOPE & THE THIRD PARTY MONITORING ALARM COMPANY IS TO ELIMINATE THE RISKS OF SURFACE MOUNTED CONDUITS IN FINISH SPACES & THE PROTECTION OF THE FACILITY THROUGH MONITORING OF OPTIONS SUCH AS: HEAT DETECTORS, SMOKE DETECTORS, HIGH WATER SUMP PUMP LEVEL & SPACE LOW TEMPERATURE.
 3. DIMENSIONS & UNITS SHOWN IN WHOLE NUMBERS ARE IN MILLIMETRES (MM).
 4. DIMENSIONS & UNITS SHOWN TO DECIMAL PLACES ARE IN METRES (M).
 5. ALSO REFER TO SHEET E1 & ELECTRICAL SPECIFICATIONS.

No.	REVISION/DESCRIPTION	BY	DATE
1	ISSUED FOR ADDENDUM #2. ADDED NOTE ON VIEW TITLES.	DTA	2017.06.20
0	ISSUED FOR REFERENCE USE ONLY	DTA	2017.03.20

SEAL

ORIGINAL STAMPED BY:	XINYU WU, 30166
DATE:	2017-03-20

DRAWN	DATE	CHECKED	DESIGNED	DATE	APPROVED
	2017.03.20	USER			APPROVAL

THE CITY OF WINNIPEG
PLANNING, PROPERTY AND
DEVELOPMENT DEPARTMENT
MUNICIPAL ACCOMMODATIONS DIVISION
3-65 GARRY STREET, R3C 4K4

PROJECT
BRADY ROAD LANDFILL
ADMINISTRATION BUILDING
DEVELOPMENT FOR BRADY LANDFILL
1777 BRADY ROAD

SHEET TITLE
REFLECTED CEILING PLANS
ELECTRICAL (REFERENCE USE ONLY)
INTRUSION ALARM AND MONITORING SYSTEMS

SCALE	PROJECT No:	SHEET No:
AS SHOWN	2015-037-02	E8-R1