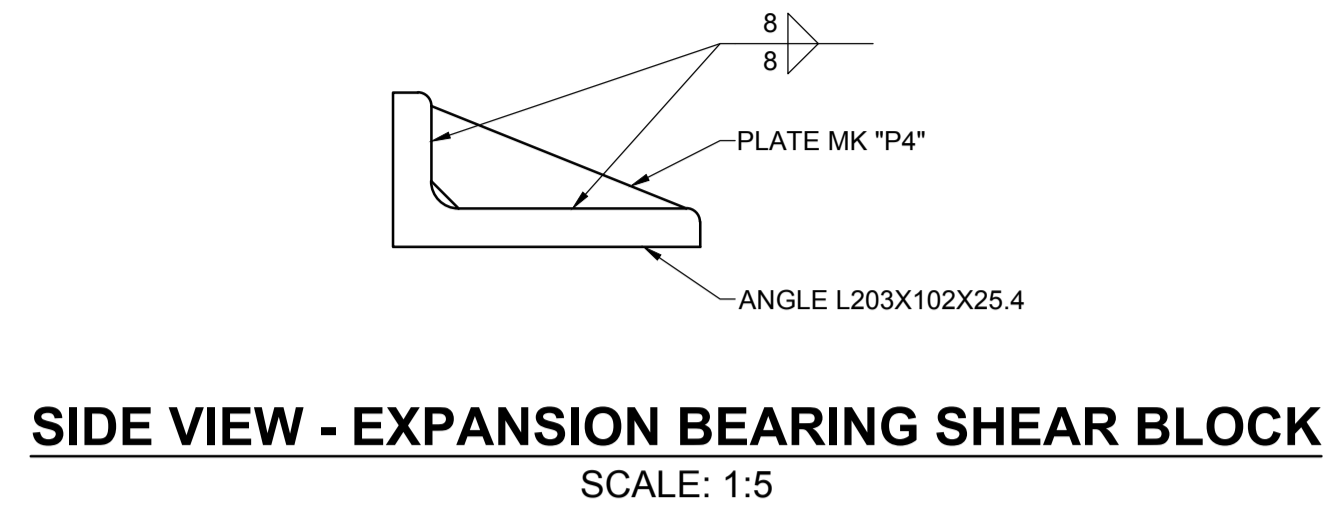
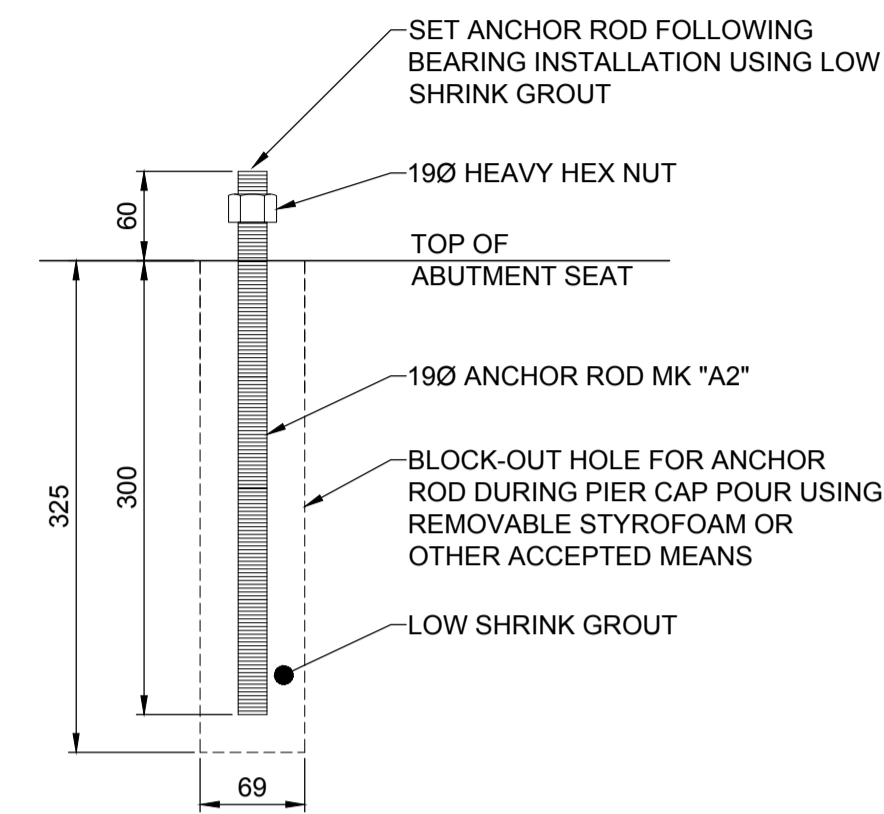


**EXPANSION BEARING SHEAR BLOCK MK. SB1**  
SCALE: 1:2

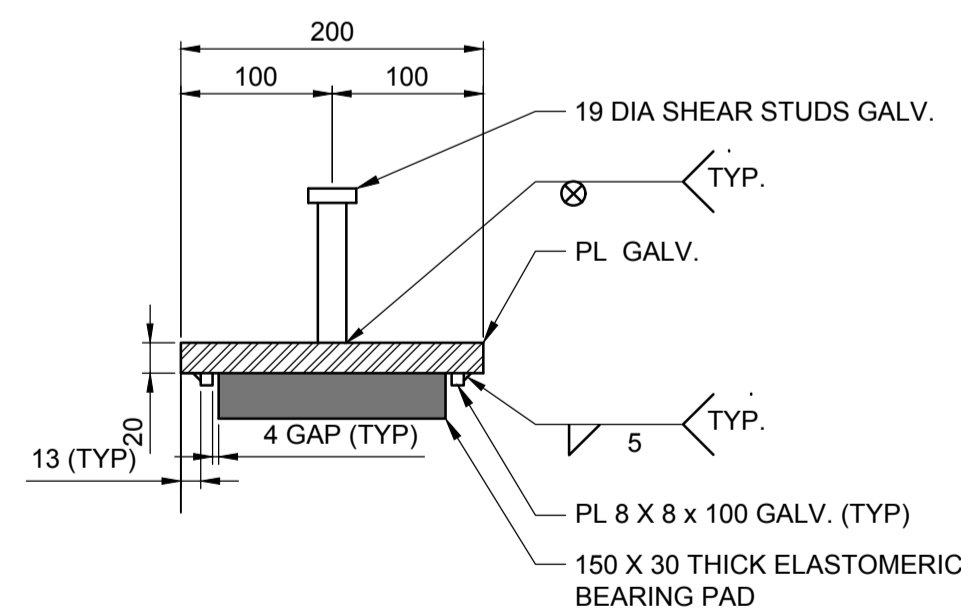


**DETAIL - STIFFENER PLATE Mk "P4"**  
SCALE: 1:5

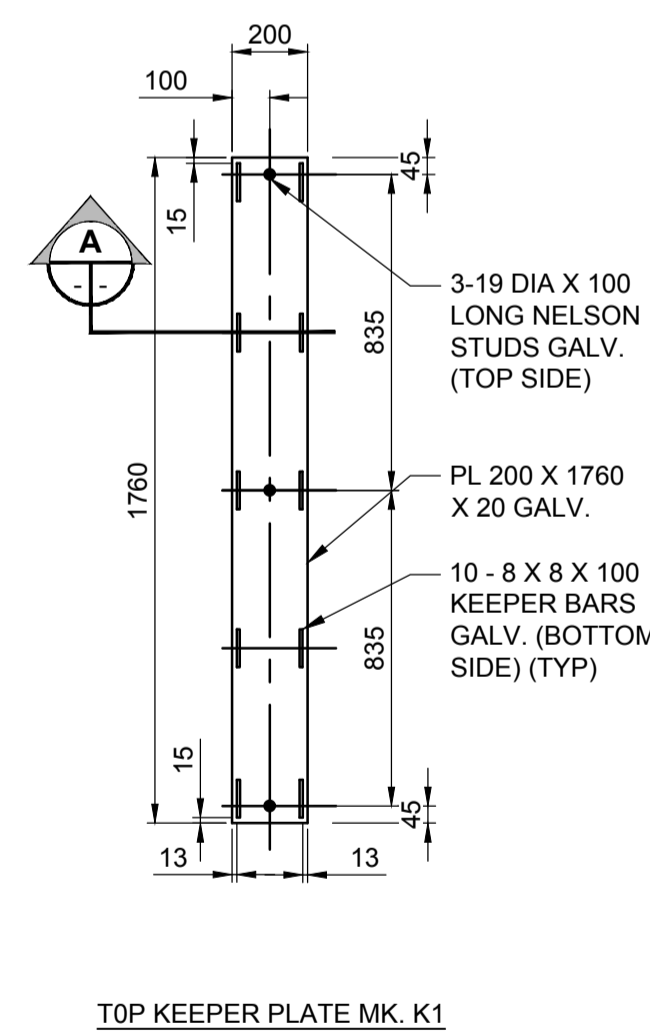


**DETAIL - ANCHOR ROD Mk "A2"**  
SCALE: 1:5

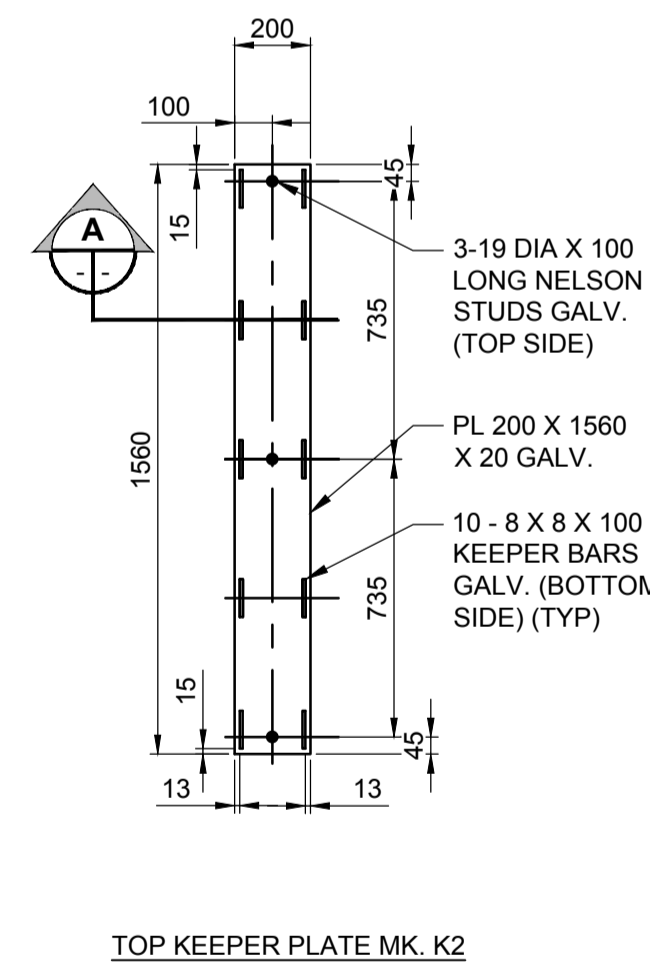
BILL OF MATERIALS - BRIDGE BEARINGS ASSEMBLY	
ITEM	NO.
RETAINING PLATE MK. P1	8
16MM Ø STAINLESS STEEL BOLT 50 LONG, MK. A1	16
LAMINATED ELASTOMERIC BEARING MK. B1	4
TAPERED TOP PLATE MK. P2	2
TAPERED TOP PLATE MK. P3	2
PLAIN ELASTOMERIC BEARING PAD MK. X1	3
PLAIN ELASTOMERIC BEARING PAD MK. X2	4
PLAIN ELASTOMERIC BEARING PAD MK. X3	4
PLAIN ELASTOMERIC BEARING PAD MK. X4	4
TOP KEEPER PLATE MK. K1	4
TOP KEEPER PLATE MK. K2	3
TOP KEEPER PLATE MK. K3	4
TOP KEEPER PLATE MK. K4	4
SHEAR BLOCK MK. SB1	4
ANCHOR ROD MK. A2	8



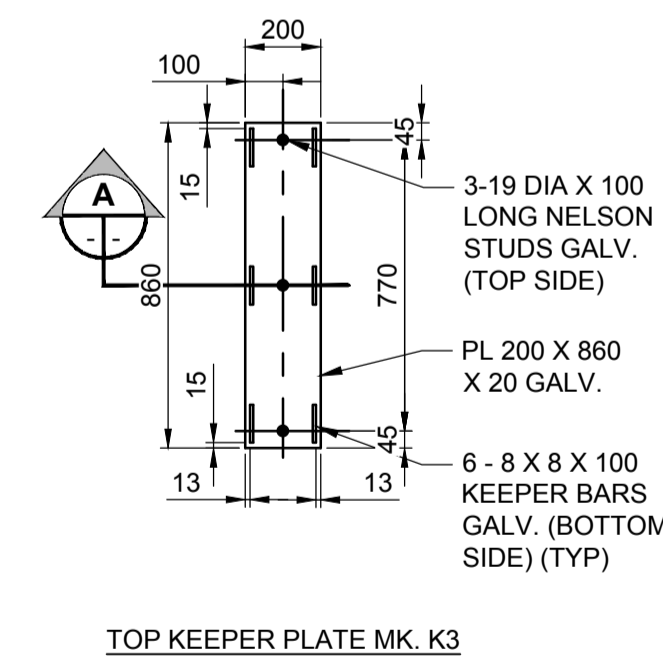
**SECTION - PLAIN ELASTOMER TOP KEEPER PLATE**  
SCALE: 1:5



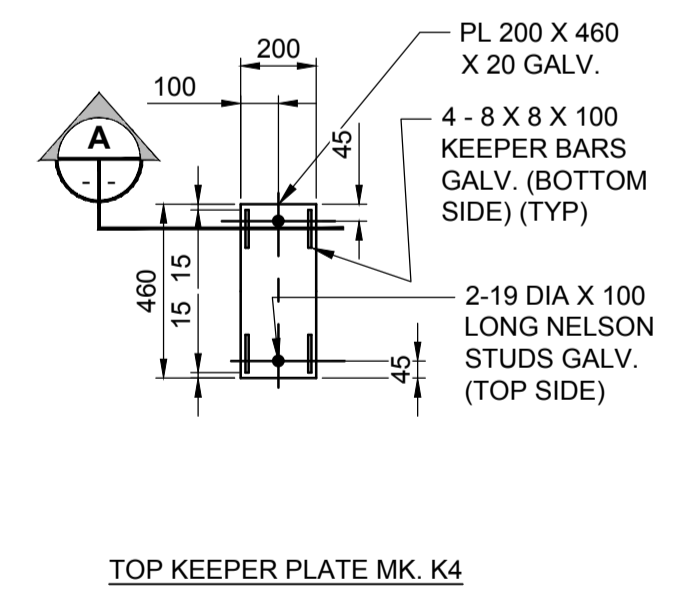
TOP KEEPER PLATE MK. K1



TOP KEEPER PLATE MK. K2



TOP KEEPER PLATE MK. K3



TOP KEEPER PLATE MK. K4

**PLAN - PLAIN ELASTOMER TOP KEEPER PLATE**  
SCALE: 1:20



**METRIC**  
WHOLE NUMBERS INDICATE MILLIMETRES  
DECIMALIZED NUMBERS INDICATE METRES

LOCATION APPROVED UNDERGROUND STRUCTURES		BM ELEV
SUPR. U/G STRUCTURES COMMITTEE	DATE	
<b>NOTE:</b> LOCATION OF UNDERGROUND STRUCTURES AS SHOWN ARE BASED ON THE BEST INFORMATION AVAILABLE BUT NO GUARANTEE IS GIVEN THAT ALL EXISTING UTILITIES ARE SHOWN OR THAT THE GIVEN LOCATIONS ARE EXACT. CONFIRMATION OF EXISTENCE AND EXACT LOCATION OF ALL SERVICES MUST BE OBTAINED FROM THE INDIVIDUAL UTILITIES BEFORE PROCEEDING WITH CONSTRUCTION.		
1	ISSUED FOR ADDENDUM 1	17/10/27 DAN
0	ISSUED FOR TENDER	17/10/13 DAN
No.	REVISIONS	YYMMDD BY DATE

DESIGNED BY		CHECKED BY	
TN		DAN	
DRAWN BY		APPROVED BY	
AH		BE	
HOR SCALE AS SHOWN		RELEASED FOR CONSTRUCTION	
VERT SCALE AS SHOWN		DATE	
DATE 17/10/13		DATE	

**MORRISON HERSHFIELD**

DESIGNED BY TN CHECKED BY DAN  
DRAWN BY AH APPROVED BY BE

PROFESSIONAL'S SEAL  
D.A. NELSON  
Member 37248  
REGISTERED PROFESSIONAL ENGINEER

CONSULTANT FILE NAME  
S:\170563 - DD08&09 - BRG DT 1.dwg

PROFESSORIAL'S SEAL  
PROVINCE OF MANITOBA  
REGISTERED PROFESSIONAL ENGINEER  
D.A. NELSON  
Member 37248

**THE CITY OF WINNIPEG**  
PUBLIC WORKS DEPARTMENT  
ENGINEERING DIVISION

**TACHE PROMENADE TREETOP LOOKOUT**

BEARING DETAILS - 2

CITY DRAWING NUMBER B250-17-35  
SHEET 35 OF 70  
DRAWING No. REV 09 1

BID OPPORTUNITY No. 754-2017