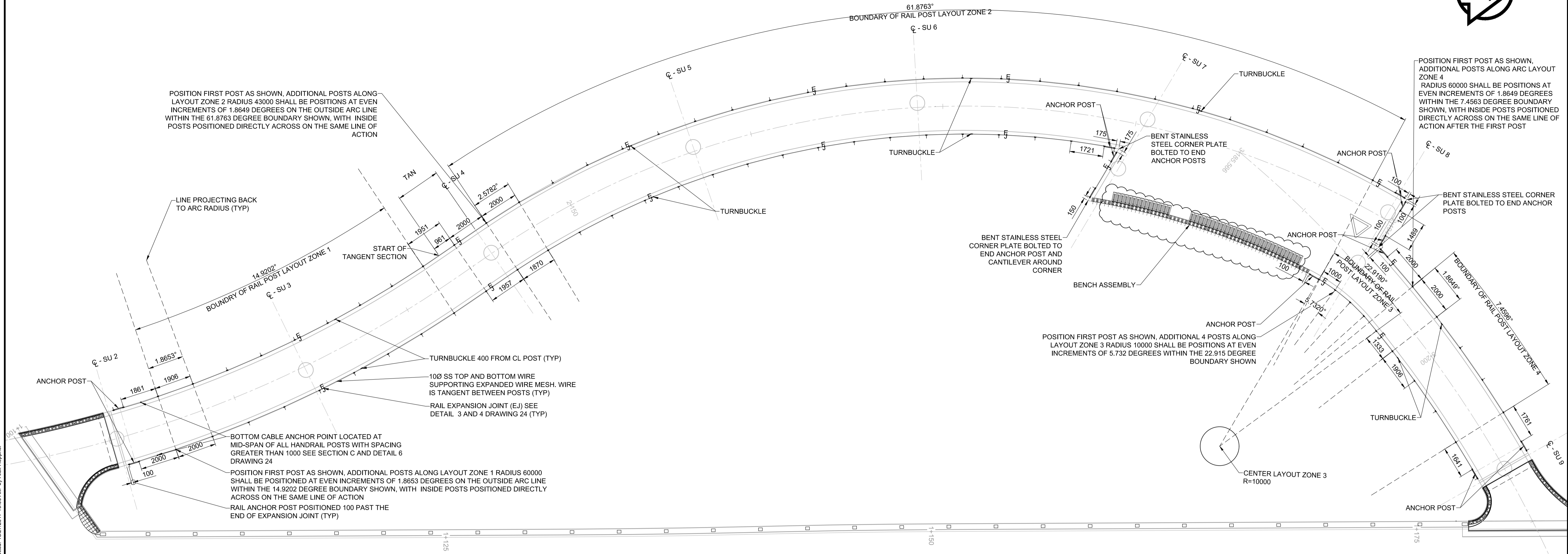
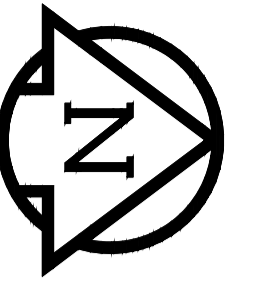


O:\Winnipeg\Proj\5170563\08\_Drawing\05\_Design\06\_Sheets\Detailed\Design\Treetop\Lookout\Structures\5170563 - DD22 - HRL PL.dwg Last Saved: 10/19/2017 4:37 PM by T.Neilson Plotted: 10/27/2017 10:00 AM by Alex Heppner



**HANDRAIL POST LAYOUT PLAN**

SCALE: 1:100

**RAILING PART LIST FOR STAINLESS STEEL ITEMS**

ITEM	DESCRIPTION	PART NO.	TOTAL COUNT	COMMENT
1	CABLE EYE - ROD/ROPE HOLDER	921-1200-12	425	4 PER RAILING POST, 1 PER LOWER CABLE GUIDE
2	PRE MADE CABLE ASSEMBLY - BOTH SIDES EXTERNAL THREAD F30 HAMMERED INCLUDES THREADED ENDS AND 10 DIA 7X19 AISI 316 GRADE BORDER CABLE	IK 120-1001	"13 ASSEMBLIES, VARYING LENGTH APPROXIMATE TOTAL LENGTH OF ALL ASSEMBLIES: 158.3m"	ANCHOR POST AND TURNBUCKLE LOCATIONS ON PLAN VIEW ABOVE
3	BOTH SIDES EYE WITH INTERNAL THREAD, SWAGED	IK 400-1000	12	1 PER ANCHOR POST ASSEMBLY
4	TURNBUCKLE THREADS, F30 HAMMERED	828-1000-02	9	
5	SS EXPANDED WIRE MESH - 2.0 mm EXTEND MW40	CX020	6 SEPARATE PANELS APPROXIMATE TOTAL QUANTITY: 0.87m HEIGHT X 137.6m TOTAL LENGTH	

**NOTES:**  
 1. PART NO.'S REFER TO CARLSTAHL DECORCABLE PRODUCT. CONTRACTOR MAY PROPOSE ALTERNATE SYSTEM WITH EQUIVALENT FUNCTION AND AESTHETIC, FOR CONTRACT ADMINISTRATOR'S REVIEW AND ACCEPTANCE.  
 2. ADDITIONAL HARDWARE REQUIRED TO MAKE CONNECTIONS BETWEEN STAINLESS STEEL FLEXIBLE MESH HANDRAIL INFILL, THIS HARDWARE, AND GALVANIZED RAILING POSTS, INCLUDING BUT NOT LIMITED TO SS WASHERS, SS BOLTS, AND RUBBER ISOLATION BETWEEN DISSIMILAR METALS, TO BE PROVIDED BY CONTRACTOR.  
 3. EXACT DIMENSION OF PRE MADE CABLE ASSEMBLIES TO BE CONFIRMED BY SHOP DRAWINGS  
 4. REFER ALSO TO GENERAL NOTES AND SPECIFICATIONS.



**METRIC**  
 WHOLE NUMBERS INDICATE MILLIMETRES  
 DECIMALIZED NUMBERS INDICATE METRES

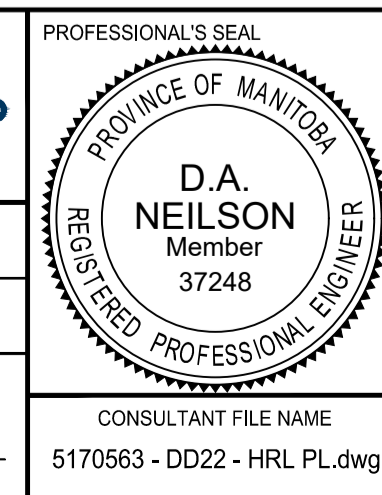
**LOCATION APPROVED**  
 UNDERGROUND STRUCTURES

SUPR. U/G STRUCTURES COMMITTEE DATE

**NOTE:**  
 LOCATION OF UNDERGROUND STRUCTURES AS SHOWN ARE BASED ON THE BEST INFORMATION AVAILABLE BUT NO GUARANTEE IS GIVEN THAT ALL EXISTING UTILITIES ARE SHOWN OR THAT THE GIVEN LOCATIONS ARE EXACT. CONFIRMATION OF EXISTENCE AND EXACT LOCATION OF ALL SERVICES MUST BE OBTAINED FROM THE INDIVIDUAL UTILITIES BEFORE PROCEEDING WITH CONSTRUCTION.

No.	REVISIONS	DATE	BY
1	ISSUED FOR ADDENDUM 1	17/10/27	DAN
0	ISSUED FOR TENDER	17/10/13	DAN

<b>MORRISON HERSHFIELD</b>	
DESIGNED BY: TN	CHECKED BY: DAN
DRAWN BY: AH	APPROVED BY: BE
HOR SCALE: AS SHOWN	VERT SCALE: AS SHOWN
DATE: 17/10/13	RELEASED FOR CONSTRUCTION DATE:



BID OPPORTUNITY No. 754-2017

**THE CITY OF WINNIPEG**  
 PUBLIC WORKS DEPARTMENT  
 ENGINEERING DIVISION

**TACHE PROMENADE TREETOP LOOKOUT**

HANDRAIL PLAN

CITY DRAWING NUMBER: B250-17-49  
 SHEET 49 OF 70  
 DRAWING No. 23 REV 1