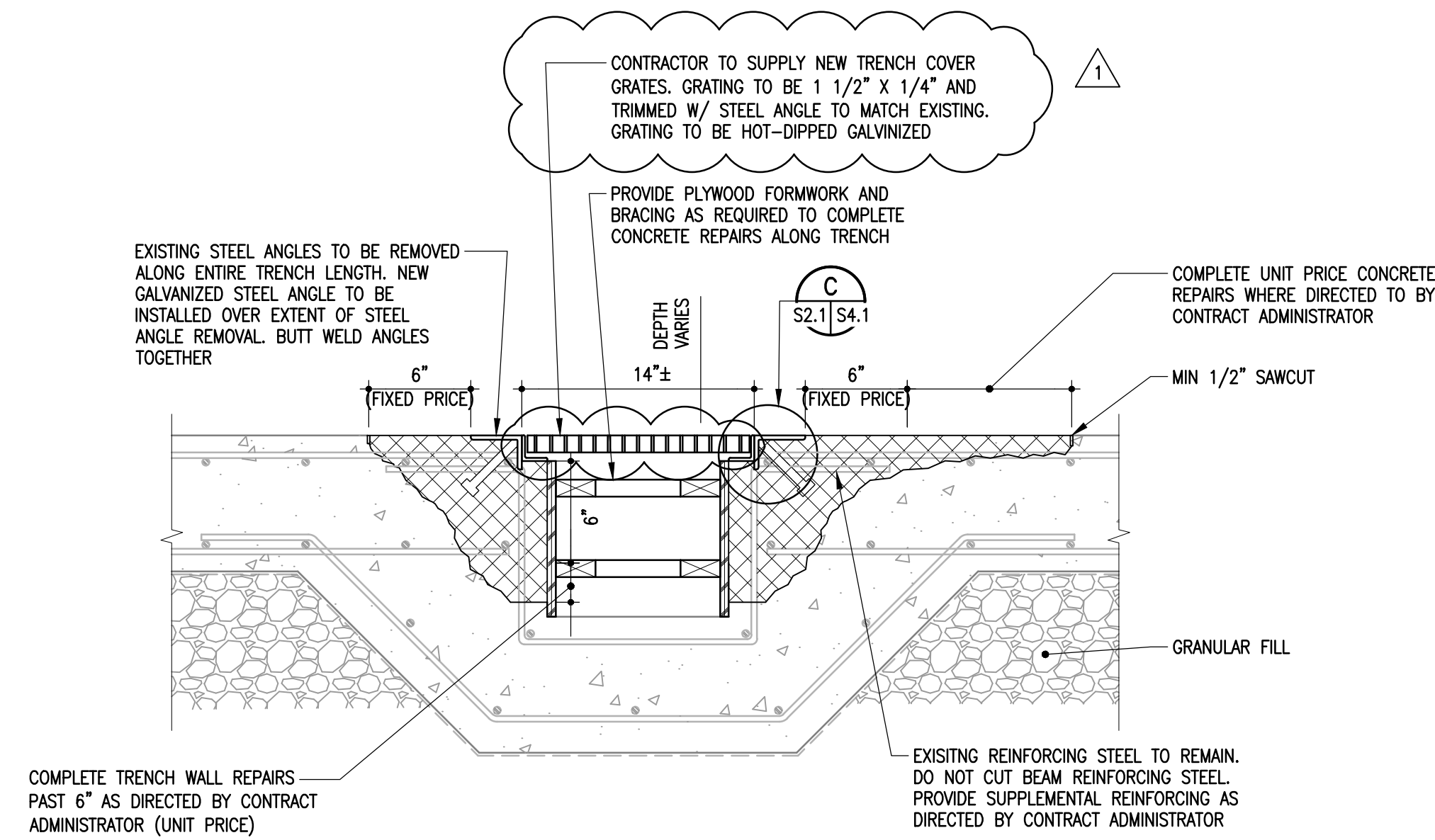
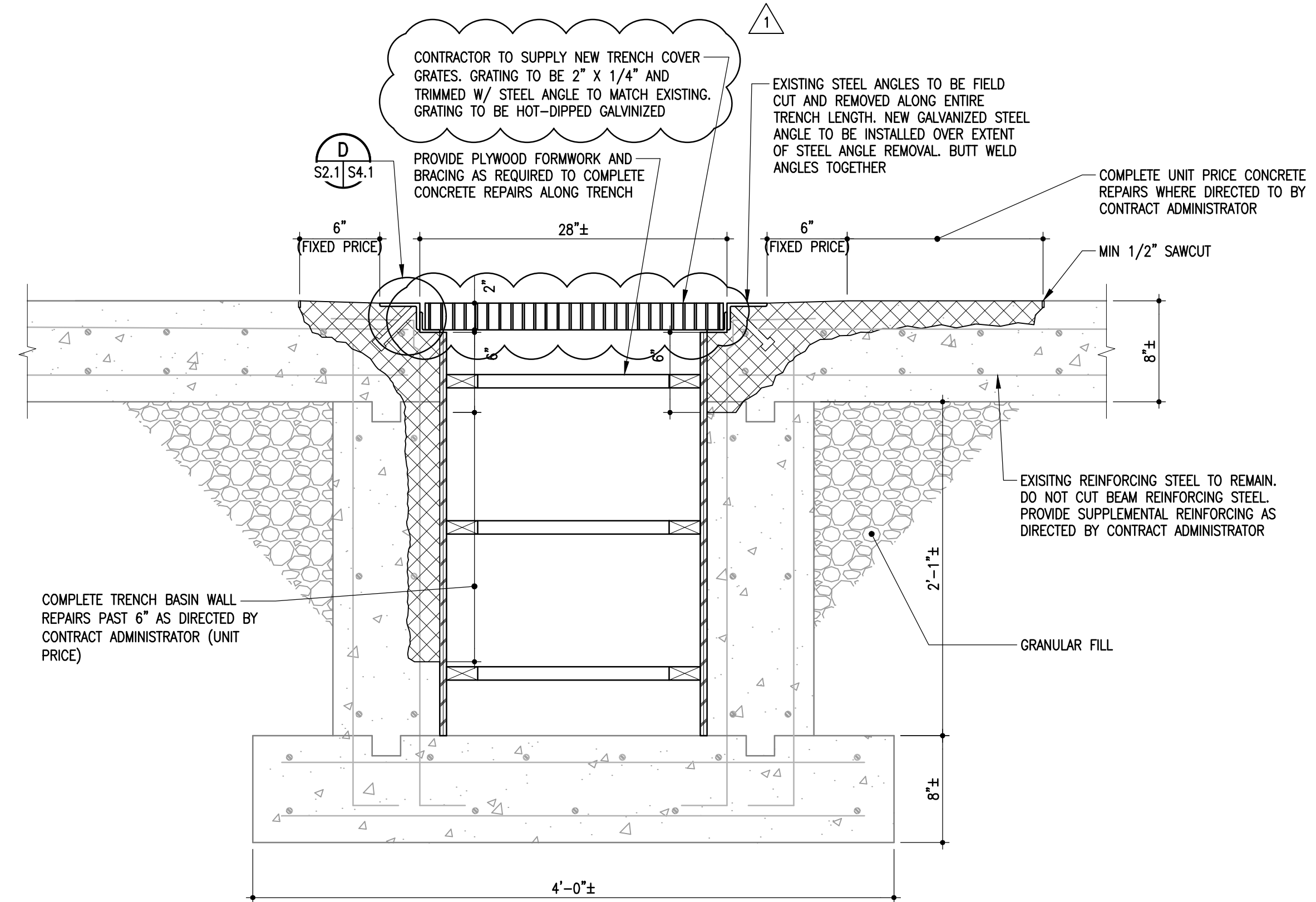


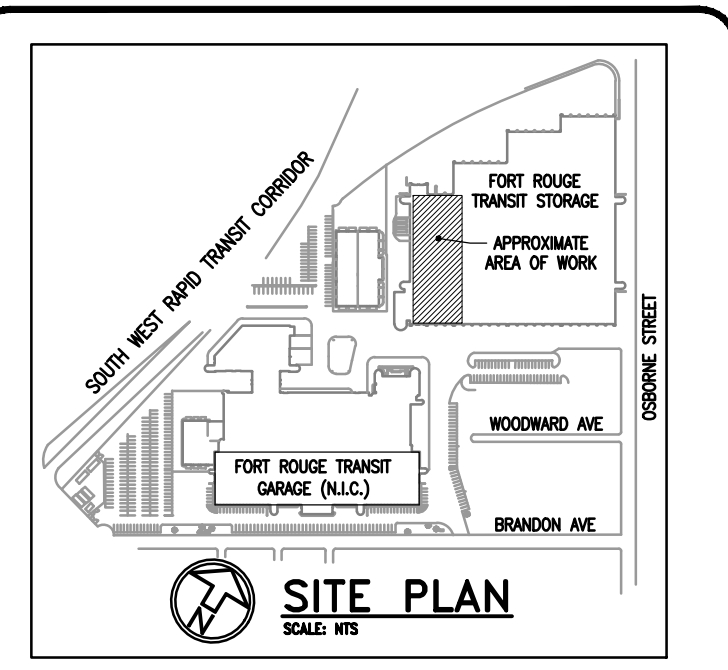
**PARTIAL FLOOR PLAN  
REPAIR PLAN**  
1/8" = 1'-0"



**1 TYPICAL TRENCH EDGE REPAIR**  
S2.1 S2.1 1 1/2" = 1'-0"



**2 TYPICAL CATCH BASIN SECTION**  
S2.1 S2.1 1 1/2" = 1'-0"



- GENERAL NOTES**
- DO NOT SCALE DRAWINGS.
  - ALL DIMENSIONS ARE BASED ON ORIGINAL DRAWINGS AND TO BE VERIFIED WITH THE EXISTING SITE CONDITIONS PRIOR TO CONSTRUCTION.
  - THESE STRUCTURAL DRAWINGS SHOW THE COMPLETED STRUCTURE AND DO NOT INDICATE ALL COMPONENTS NECESSARY FOR SAFETY DURING CONSTRUCTION. THE CONTRACTOR SHALL BE SOLELY RESPONSIBLE FOR SAFETY ON AND AROUND THE JOBSITE DURING CONSTRUCTION.
  - PROTECT ALL WORK FROM BUS WHEEL TRAFFIC.
  - REFER TO SPECIFICATION, SECTIONS FOR FULL SCOPE OF REPAIR DETAILS.

The General Contractor shall check & verify all dimensions and report any errors or omissions to the designers.

No.	Date	Issue/Revision	By
1	2018-05-29	TRENCH COVER REVISION	IM
0	2018-05-01	ISSUED FOR CONSTRUCTION	IM



ORIGINAL DRAWING  
SEALED BY  
IM  
AND DATED  
2018-05-01

Consultant

300-275 Carlton Street  
Winnipeg, Manitoba R3C 5R6  
T 204-943-7501  
F 204-943-7507

**Crosier Kilgour  
& Partners Ltd.**  
CONSULTING STRUCTURAL ENGINEERS

Project  
**FORT ROUGE TRANSIT GARAGE**  
TRENCH REPAIR

421 OSBORNE STREET  
WINNIPEG, MANITOBA

Sheet Title  
PARTIAL FLOOR PLAN,  
REPAIR SECTIONS

File 2016-1442 Date 2018-05-29

Design IM Drawn JSR

Revision 1 Sheet No. S2.1