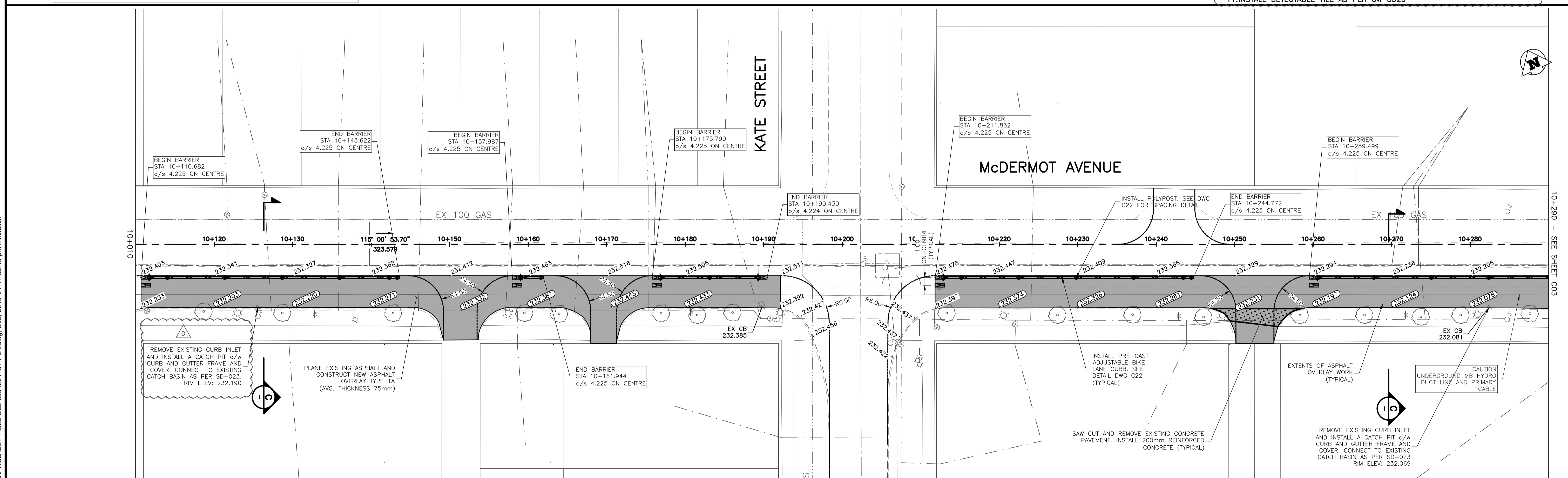


ENGINEERS
GEOSCIENTISTS
MANITOBA
 Certificate of Authorization
 Urban Systems Ltd.
 No. 5053

- GENERAL NOTES:**
- DESIGN GRADES ARE TO BE CONFIRMED ONCE PLANING HAS BEEN COMPLETED.
 - ADJUST VALVES TO MATCH FINAL GRADES.
 - ADJUST PAVEMENT MANHOLE AND CATCH BASIN FRAMES 50mm BELOW FINAL GRADE TO ACCOMMODATE A RISER RING FOR FINAL ASPHALT PAVING OPERATIONS.
 - MAINTAIN TRAFFIC AS OUTLINED IN THE TRAFFIC MANAGEMENT SPECIFICATION.
 - RADIUS CURB RENEWAL ON INTERSECTING STREETS & BACK LANES TO BE MODIFIED BARRIER CURB AS REQUIRED.
 - CONCRETE REPAIRS TO BE CONFIRMED BY THE CONTRACT ADMINISTRATOR.
 - CURB AND SIDEWALK RENEWAL AS DIRECTED BY THE CONTRACT ADMINISTRATOR.
 - MAINTAIN 25-75mm OF REVEAL ON THE SIGNAL BASES.
 - SEE DWG C22 FOR ADJUSTABLE CURB AND END UNIT DETAILS.
 - NEW CURB TO BE TIED TO EXISTING OVER 2.0m. SEE DWG C23 FOR DETAIL.
 - INSTALL DETECTABLE TILE AS PER CW 3326

FOR SIGNING AND PAVEMENT MARKING DRAWINGS SEE DWG C24 TO C36



150 mm W.M.	WATERMAIN	150 mm W.M.	HYDRO	ADJUSTABLE CURB	LOCATION APPROVED UNDERGROUND STRUCTURES	B.M. ELEV.
300mm L.D.S.	LAND DRAINAGE SEWER	300mm L.D.S.	M.T.S.	ADJUSTABLE END UNIT	DATE	A 60% DETAIL DESIGN 2018-01-25 GS
250mm W.W.S.	WASTEWATER SEWER	250mm W.W.S.	CONCRETE	DECORATIVE LIGHT	NOTE:	B 90% DETAIL DESIGN 2018-03-12 GS
	MANHOLE		ASPHALT	POLYPOST	LOCATION OF UNDERGROUND STRUCTURES AS SHOWN ARE BASED ON THE BEST INFORMATION AVAILABLE. BUT NO GUARANTEE IS GIVEN THAT ALL EXISTING UTILITIES ARE SHOWN OR THAT THE GIVEN LOCATIONS ARE EXACT. CONFIRMATION OF EXISTENCE AND EXACT LOCATION OF ALL SERVICES MUST BE OBTAINED FROM THE INDIVIDUAL UTILITIES BEFORE PROCEEDING WITH CONSTRUCTION.	C ISSUED FOR TENDER 2018-03-28 GS
	CATCH BASIN	235.750	PROPERTY LINE			D ADDENDUM No.1 2018-04-11 GS
	CURB INLET	500mm	SURVEY BAR			
	JUNCTIONS		ELEVATION (35.750)			
	CULVERT		TREE			
	GAS		SIDEWALK DETECTABLE			
EXISTING	LEGEND - PLAN	PROPOSED	CONCRETE SIDEWALK			
			FENCE			
				LEGEND - PROFILE		

URBAN systems

DESIGNED BY: M. Nikolich
 CHECKED BY: G. Smith
 DRAWN BY: M. Nikolich
 APPROVED BY: G. Propp
 HOR. SCALE: 1:250
 RELEASED FOR CONSTRUCTION BY:
 VERTICAL:
 DATE: APRIL 11, 2018

NO.	REVISIONS	DATE	BY

ENGINEER'S SEAL

NOT FOR CONSTRUCTION

CONSULTANT DRAWING NO. 3354.0011.01 C02

THE CITY OF WINNIPEG
PUBLIC WORKS DEPARTMENT
ENGINEERING DIVISION

McDermot Bannatyne Adjustable Bike Lanes
 Plan
 Station 9+980 to 10+290

SHEET 02 OF 36
 CAD FILE DRAWING NUMBER C02-C22-3354001101-PLN.DWG
 CITY DRAWING NUMBER P-3496-02

U:\Projects_VAN\3354001101\Design\CAD\PROJ\SET 1\C02-C22-3354001101-PLN.dwg, C02, 2018-04-11 02:48 pm mnikolich