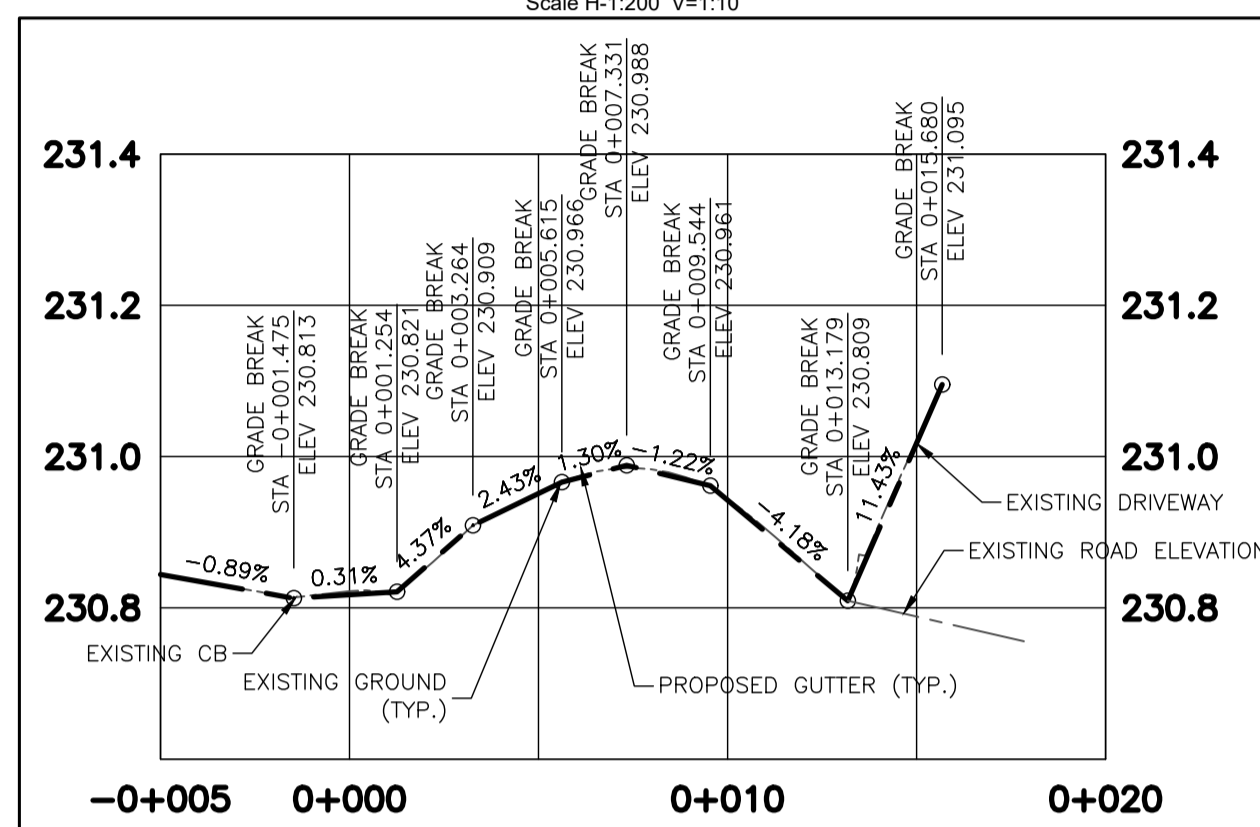
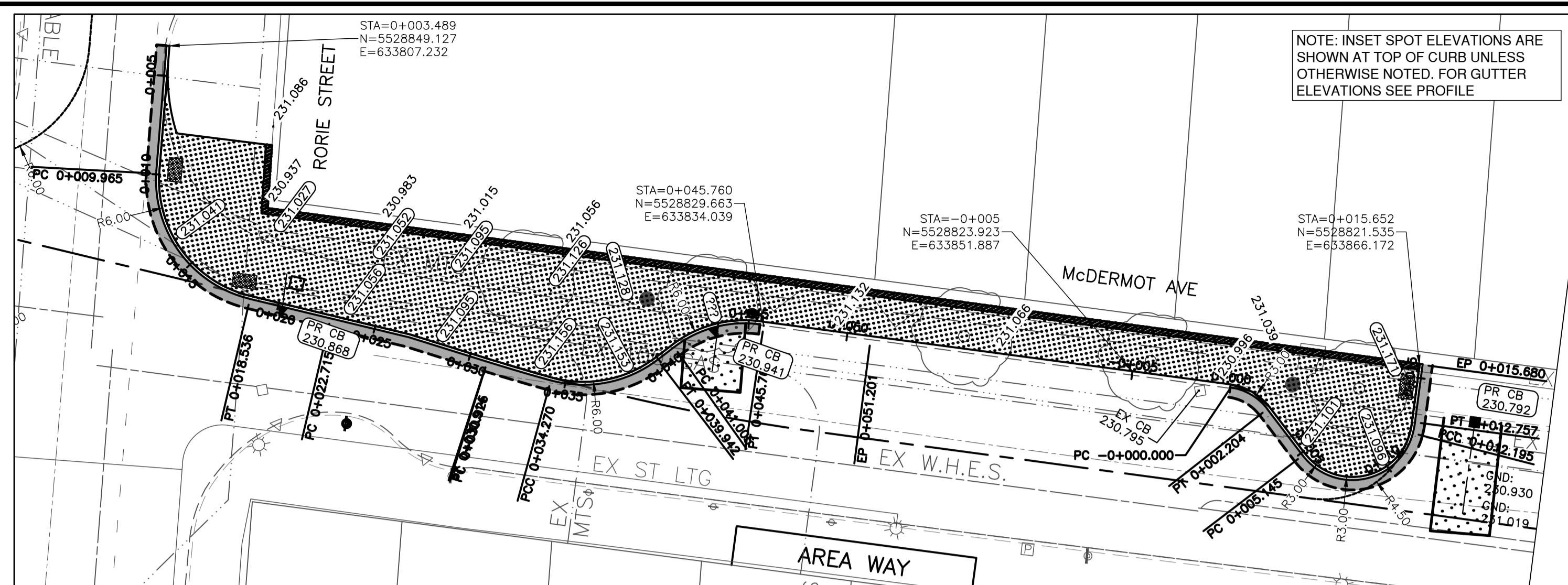


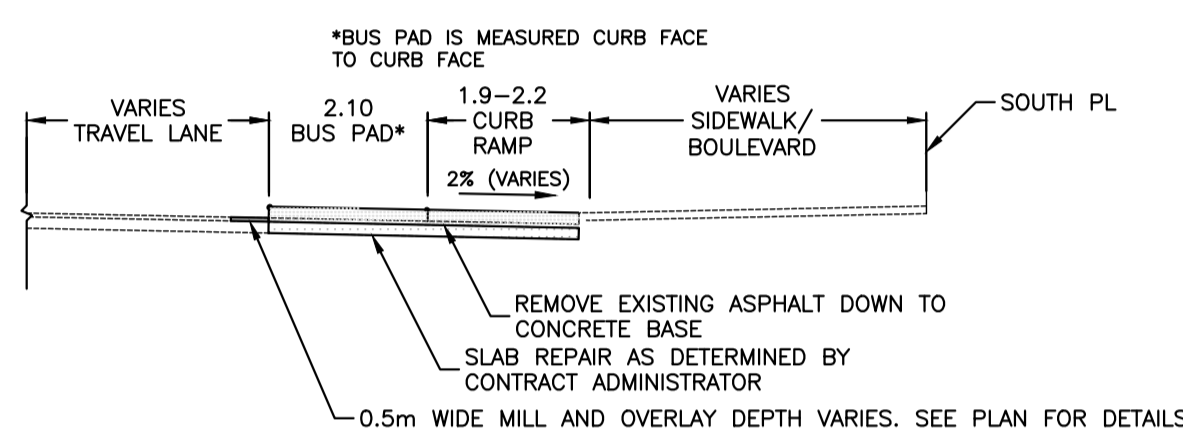
WEST PROFILE  
Scale H-1:200 V-1:10



EAST PROFILE  
Scale H-1:200 V-1:10



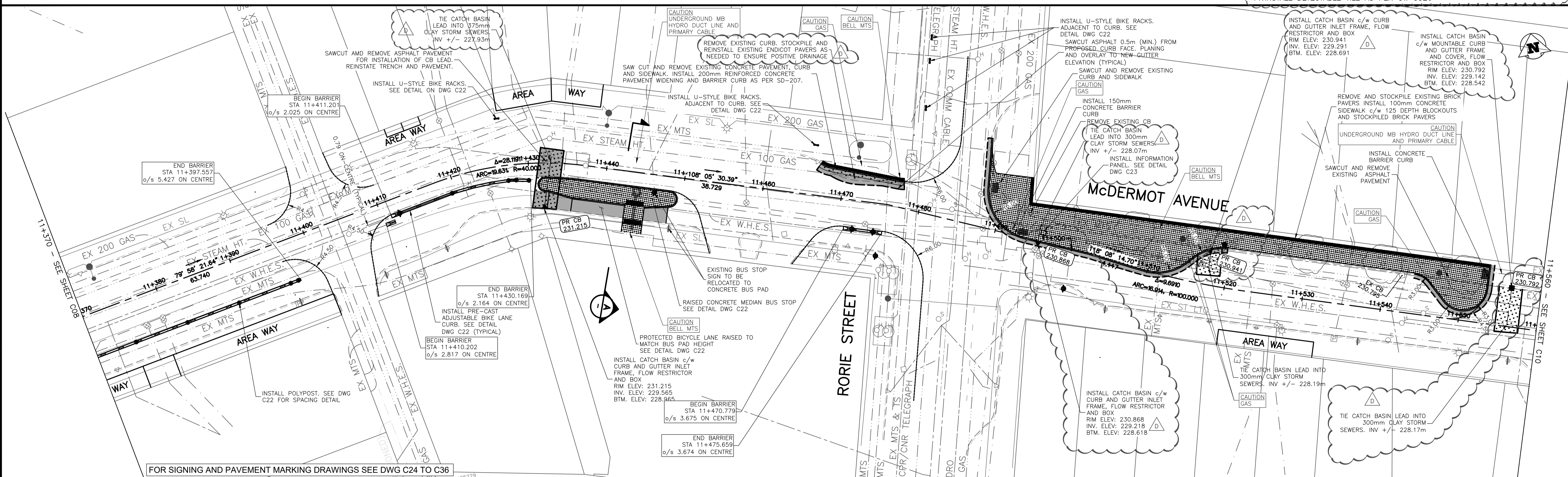
SPOT ELEVATIONS  
Scale H-1:200  
McDERMOT AVENUE AT RORIE STREET



TYPICAL SECTION - BUS PAD  
NOT TO SCALE

**ES** ENGINEERS  
GEOSCIENTISTS  
MANITOBA  
Certificate of Authorization  
Urban Systems Ltd.  
No. 5053

- GENERAL NOTES:**
- DESIGN GRADES ARE TO BE CONFIRMED ONCE PLANING HAS BEEN COMPLETED.
  - ADJUST VALVES TO MATCH FINAL GRADES.
  - ADJUST PAVEMENT MANHOLE AND CATCH BASIN FRAMES 50mm BELOW FINAL GRADE TO ACCOMMODATE A RISER RING FOR FINAL ASPHALT PAVING OPERATIONS.
  - MAINTAIN TRAFFIC AS OUTLINED IN THE TRAFFIC MANAGEMENT SPECIFICATION.
  - RADIUS CURB RENEWAL ON INTERSECTING STREETS & BACK LANES TO BE MODIFIED BARRIER CURB AS REQUIRED.
  - CONCRETE REPAIRS TO BE CONFIRMED BY THE CONTRACT ADMINISTRATOR.
  - CURB AND SIDEWALK RENEWAL AS DIRECTED BY THE CONTRACT ADMINISTRATOR.
  - MAINTAIN 25-75mm OF REVEAL ON THE SIGNAL BASES.
  - SEE DWG C22 FOR ADJUSTABLE CURB AND END UNIT DETAILS.
  - NEW CURB TO BE TIED TO EXISTING OVER 2.0m. SEE DWG C23 FOR DETAIL.
  - INSTALL DETECTABLE TILE AS PER CW 3326



FOR SIGNING AND PAVEMENT MARKING DRAWINGS SEE DWG C24 TO C36

150 mm W.W.S.	WATERMAIN	150 mm W.W.S.	HYDRO	ADJUSTABLE CURB
Hydrant	Valve	300mm L.D.S.	M.T.S.	ADJUSTABLE END UNIT
300mm L.D.S.	LAND DRAINAGE SEWER	300mm L.D.S.	CONCRETE	DECORATIVE LIGHT
250mm W.W.S.	WASTEWATER SEWER	250mm W.W.S.	ASPHALT	POLYPOST
Manhole	Catch Basin	235.750	PROPERTY LINE	
Curb Inlet	Junctions	500ø	SURVEY BAR	
Culvert	Gas		ELEVATION (35.750)	
			TREE	
			SIDEWALK DETECTABLE	
			CONCRETE SIDEWALK	
			FENCE	
EXISTING	LEGEND - PLAN	PROPOSED	EXISTING	LEGEND - PROFILE
			PROPOSED	

**LOCATION APPROVED UNDERGROUND STRUCTURES**

SUPV. U/G STRUCTURES COMMITTEE DATE

NOTE:  
LOCATION OF UNDERGROUND STRUCTURES AS SHOWN ARE BASED ON THE BEST INFORMATION AVAILABLE. BUT NO GUARANTEE IS GIVEN THAT ALL EXISTING UTILITIES ARE SHOWN OR THAT THE GIVEN LOCATIONS ARE EXACT. CONFIRMATION OF EXISTENCE AND EXACT LOCATION OF ALL SERVICES MUST BE OBTAINED FROM THE INDIVIDUAL UTILITIES BEFORE PROCEEDING WITH CONSTRUCTION.

B.M. ELEV.			
A	60% DETAIL DESIGN	2018-01-32	GS
B	90% DETAIL DESIGN	2018-03-12	GS
C	ISSUED FOR TENDER	2018-03-28	GS
D	ADDENDUM No.1	2018-04-11	GS
NO. REVISIONS		DATE	BY

**URBAN systems**

DESIGNED BY: M. Nikolic  
CHECKED BY: G. Smith  
DRAWN BY: M. Nikolic  
APPROVED BY: G. Propp  
HOR. SCALE: 1:250  
VERTICAL: 1:25  
RELEASED FOR CONSTRUCTION BY:  
DATE: APRIL 11, 2018

ENGINEER'S SEAL  
NOT FOR CONSTRUCTION  
CONSULTANT DRAWING NO. 3354.0011.01 C09

**THE CITY OF WINNIPEG**  
PUBLIC WORKS DEPARTMENT  
ENGINEERING DIVISION

McDermot Bannatyne Adjustable Bike Lanes  
McDermot Avenue  
Station 11+370 to 11+560

SHEET 09 OF 36  
CAD FILE DRAWING NUMBER C02-C22-3354001101-PLN.DWG  
CITY DRAWING NUMBER P-3496-09

U:\Projects\_VAN\3354001101-Design\CAD\PROJ\SET 1\C02-C22-3354001101-PLN.dwg, C09, 2018-04-11 03:33 pm mnikolic