

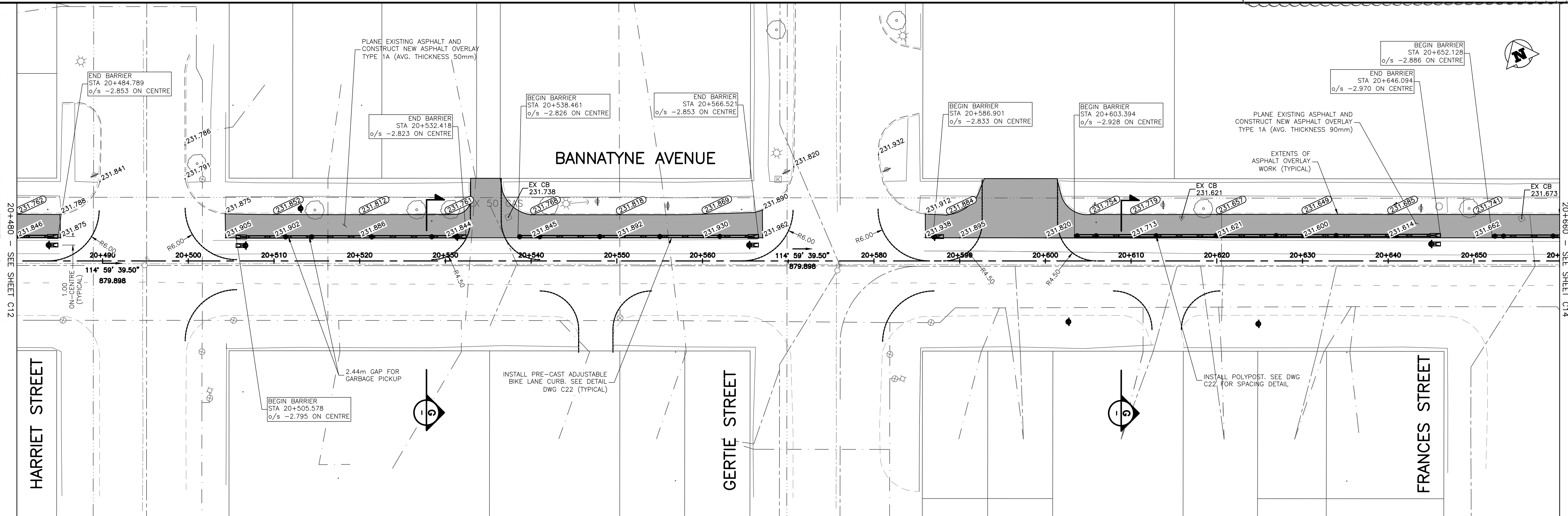
G TYPICAL SECTION
NOT TO SCALE

ES ENGINEERS
GEOSCIENTISTS
MANITOBA

Certificate of Authorization
Urban Systems Ltd.
No. 5053

- GENERAL NOTES:**
- DESIGN GRADES ARE TO BE CONFIRMED ONCE PLANING HAS BEEN COMPLETED.
 - ADJUST VALVES TO MATCH FINAL GRADES.
 - ADJUST PAVEMENT MANHOLE AND CATCH BASIN FRAMES 50mm BELOW FINAL GRADE TO ACCOMMODATE A RISER RING FOR FINAL ASPHALT PAVING OPERATIONS.
 - MAINTAIN TRAFFIC AS OUTLINED IN THE TRAFFIC MANAGEMENT SPECIFICATION.
 - RADI CURB RENEWAL ON INTERSECTING STREETS & BACK LANES TO BE MODIFIED BARRIER CURB AS REQUIRED.
 - CONCRETE REPAIRS TO BE CONFIRMED BY THE CONTRACT ADMINISTRATOR.
 - CURB AND SIDEWALK RENEWAL AS DIRECTED BY THE CONTRACT ADMINISTRATOR.
 - MAINTAIN 25-75mm OF REVEAL ON THE SIGNAL BASES.
 - SEE DWG C22 FOR ADJUSTABLE CURB AND END UNIT DETAILS.
 - NEW CURB TO BE TIED TO EXISTING OVER 2.0m. SEE DWG C23 FOR DETAIL.
 - INSTALL DETECTABLE TILE AS PER CW 3326

FOR SIGNING AND PAVEMENT MARKING DRAWINGS SEE DWG C24 TO C36



U:\Projects_VAN\3354001101\1D-Design\CAD\PROJ\SET 1\C02-C22-3354001101-PLN.dwg, C13, 2018-04-11 02:57 pm mnikolich

150 mm W.M.	WATERMAIN	150 mm W.M.	HYDRO	ADJUSTABLE CURB	LOCATION APPROVED UNDERGROUND STRUCTURES	B.M. ELEV.		<p>ENGINEER'S SEAL</p> <p><i>NOT FOR CONSTRUCTION</i></p> <p>CONSULTANT DRAWING NO. 3354.0011.01 C13</p>	<p>THE CITY OF WINNIPEG</p> <p>Winnipeg PUBLIC WORKS DEPARTMENT ENGINEERING DIVISION</p> <p>McDermot Bannatyne Adjustable Bike Lanes Bannatyne Avenue Plan Profile Station 20+480 to 20+660</p>	SHEET 13 OF 36													
300mm L.D.S.	LAND DRAINAGE SEWER	300mm L.D.S.	CONCRETE ASPHALT	ADJUSTABLE END UNIT	<table border="1"> <tr> <td>60% DETAIL DESIGN</td> <td>2018-01-36</td> <td>GS</td> </tr> <tr> <td>90% DETAIL DESIGN</td> <td>2018-03-12</td> <td>GS</td> </tr> <tr> <td>ISSUED FOR TENDER</td> <td>2018-03-28</td> <td>GS</td> </tr> <tr> <td>ADDENDUM No.1</td> <td>2018-04-11</td> <td>GS</td> </tr> </table>	60% DETAIL DESIGN				2018-01-36	GS	90% DETAIL DESIGN	2018-03-12	GS	ISSUED FOR TENDER	2018-03-28	GS	ADDENDUM No.1	2018-04-11	GS	DESIGNED BY M. Nikolich	CHECKED BY G. Smith	CAD FILE DRAWING NUMBER C02-C22-3354001101-PLN.DWG
60% DETAIL DESIGN	2018-01-36	GS																					
90% DETAIL DESIGN	2018-03-12	GS																					
ISSUED FOR TENDER	2018-03-28	GS																					
ADDENDUM No.1	2018-04-11	GS																					
250mm W.W.S.	WASTEWATER SEWER	250mm W.W.S.	PROPERTY LINE	DECORATIVE LIGHT	<p>SUPV. U/G STRUCTURES COMMITTEE DATE</p> <p>LOCATION OF UNDERGROUND STRUCTURES AS SHOWN ARE BASED ON THE BEST INFORMATION AVAILABLE. BUT NO GUARANTEE IS GIVEN THAT ALL EXISTING UTILITIES ARE SHOWN OR THAT THE GIVEN LOCATIONS ARE EXACT. CONFIRMATION OF EXISTENCE AND EXACT LOCATION OF ALL SERVICES MUST BE OBTAINED FROM THE INDIVIDUAL UTILITIES BEFORE PROCEEDING WITH CONSTRUCTION.</p>	DRAWN BY M. Nikolich	APPROVED BY G. Propp	CITY DRAWING NUMBER P-3496-13															
	MANHOLE		SURVEY BAR	POLYPOST		HOR. SCALE: 1:250	RELEASED FOR CONSTRUCTION BY:																
	CATCH BASIN	235.750	ELEVATION (35.750)			VERTICAL: 1:25																	
	CURB INLET		TREE																				
	JUNCTIONS		SIDEWALK DETECTABLE CONCRETE SIDEWALK																				
	CULVERT		FENCE																				
	GAS																						
EXISTING	LEGEND - PLAN	PROPOSED	EXISTING	LEGEND - PROFILE	PROPOSED	NO. REVISIONS	DATE	BY	DATE	APRIL 11, 2018													