

**GENERAL LAYOUT**  
NORTH AND SOUTH RAMP  
SCALE: 1:200

**LEGEND**

PHONE
POWER
WATER
GAS
TEST BOREHOLE



**METRIC**  
WHOLE NUMBERS INDICATE MILLIMETRES  
DECIMALIZED NUMBERS INDICATE METRES

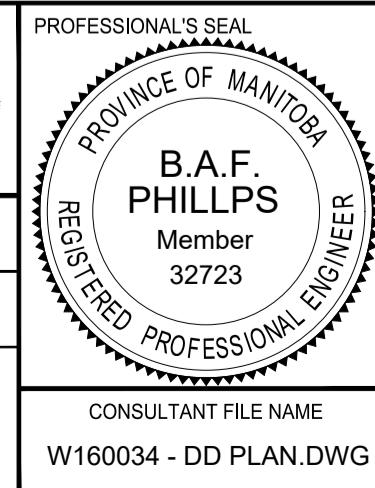
**LOCATION APPROVED**  
UNDERGROUND STRUCTURES

DATE: \_\_\_\_\_

**NOTE:**  
LOCATION OF UNDERGROUND STRUCTURES AS SHOWN ARE BASED ON THE BEST INFORMATION AVAILABLE BUT NO GUARANTEE IS GIVEN THAT ALL EXISTING UTILITIES ARE SHOWN OR THAT THE GIVEN LOCATIONS ARE EXACT. CONFIRMATION OF EXISTENCE AND EXACT LOCATION OF ALL SERVICES MUST BE OBTAINED FROM THE INDIVIDUAL UTILITIES BEFORE PROCEEDING WITH CONSTRUCTION.

No.	REVISIONS	DATE	BY
D	ISSUED FOR ADDENDUM 1	18/10/05	BAP
C	ISSUED FOR TENDER	18/09/04	BAP
B	ISSUED FOR 95% DESIGN REVIEW	18/08/07	BAP
A	ISSUED FOR 50% DESIGN REVIEW	18/06/28	BAP

<b>MORRISON HERSHFIELD</b>	
DESIGNED BY: YM	CHECKED BY: BAP
DRAWN BY: ALP	APPROVED BY: BAP
HOR SCALE: AS SHOWN	RELEASED FOR CONSTRUCTION: N/A
VERT SCALE: AS SHOWN	DATE: _____



**THE CITY OF WINNIPEG**  
PUBLIC WORKS DEPARTMENT  
ENGINEERING DIVISION

**EMPRESS STREET PROJECT**  
PEDESTRIAN ACCESSIBILITY RAMPS  
GENERAL RAMP PLAN

CITY DRAWING NUMBER: P-3494-117  
SHEET 117 OF 169  
DRAWING No. REV 117 D

CONSULTANT FILE NAME: W160034 - DD PLAN.DWG