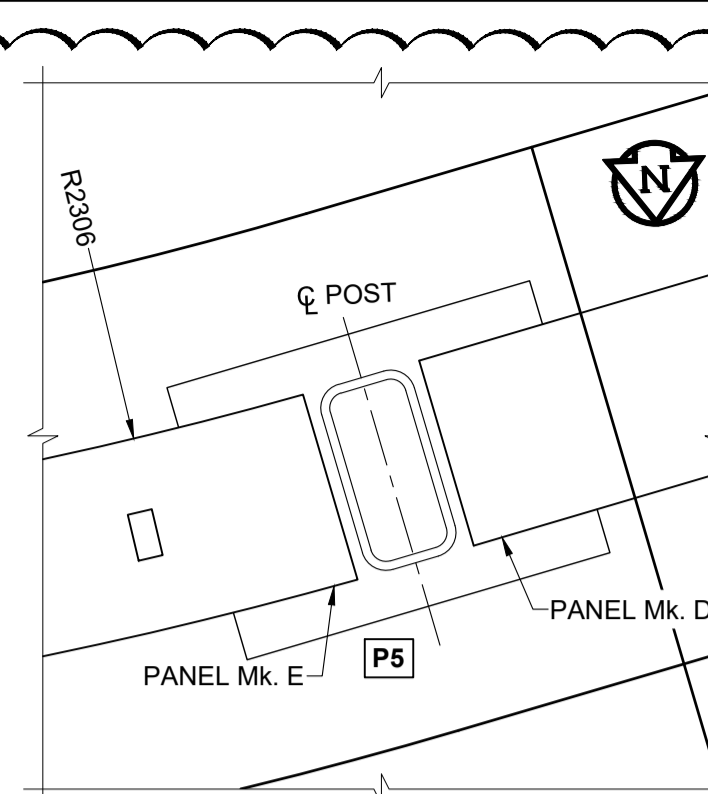
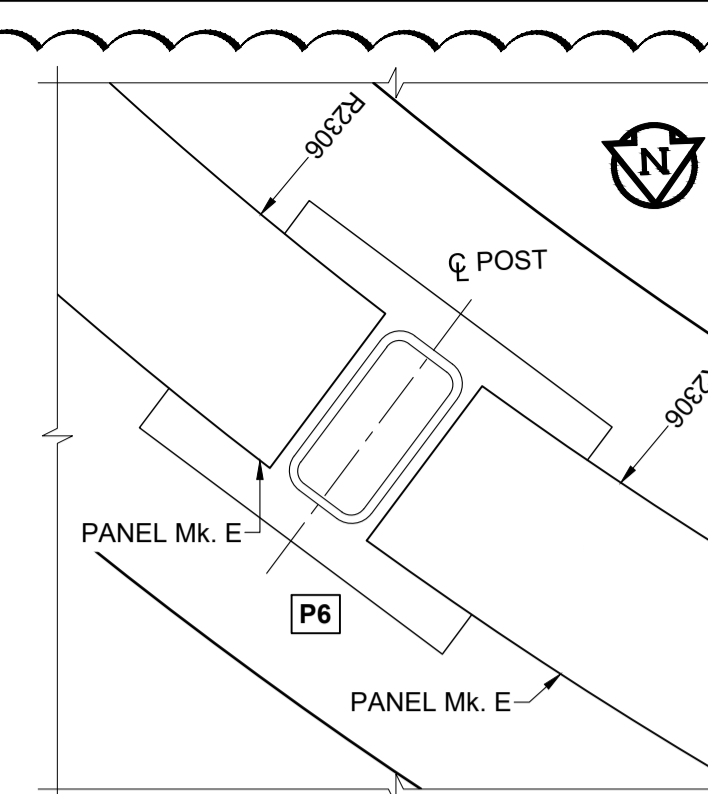


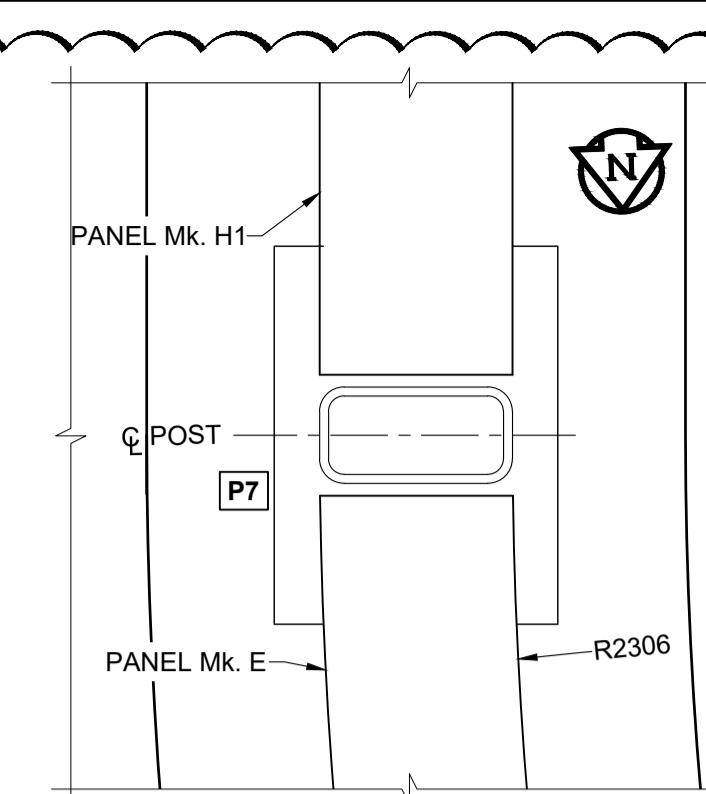
POST Mk. P4 PLAN
SCALE 1:4



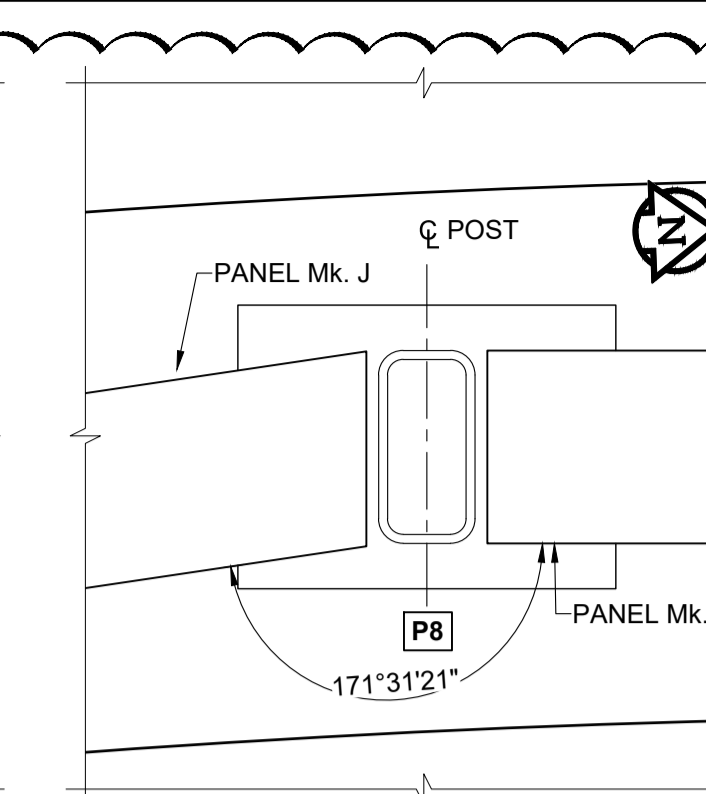
POST Mk. P5 PLAN
SCALE 1:4



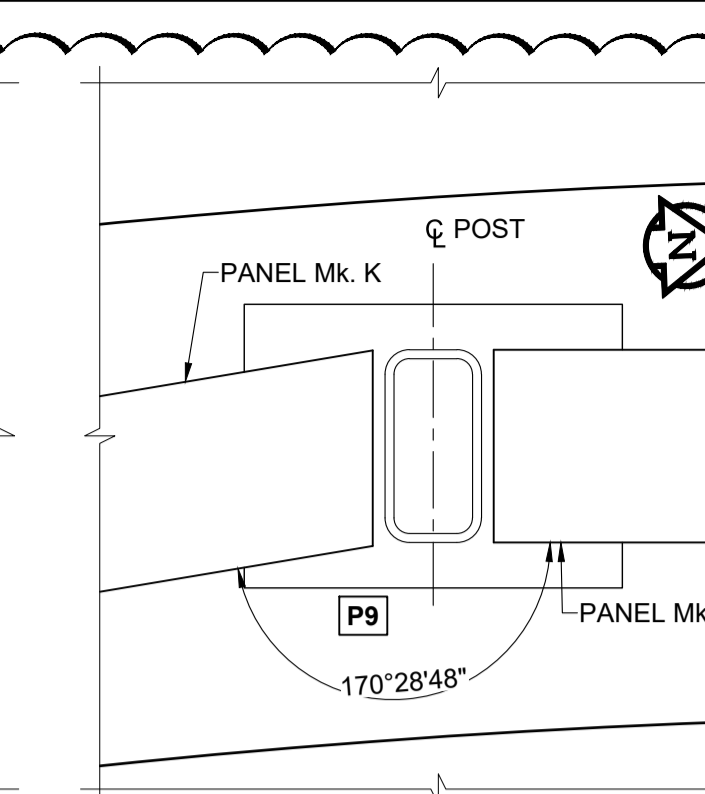
POST Mk. P6 PLAN
SCALE 1:4



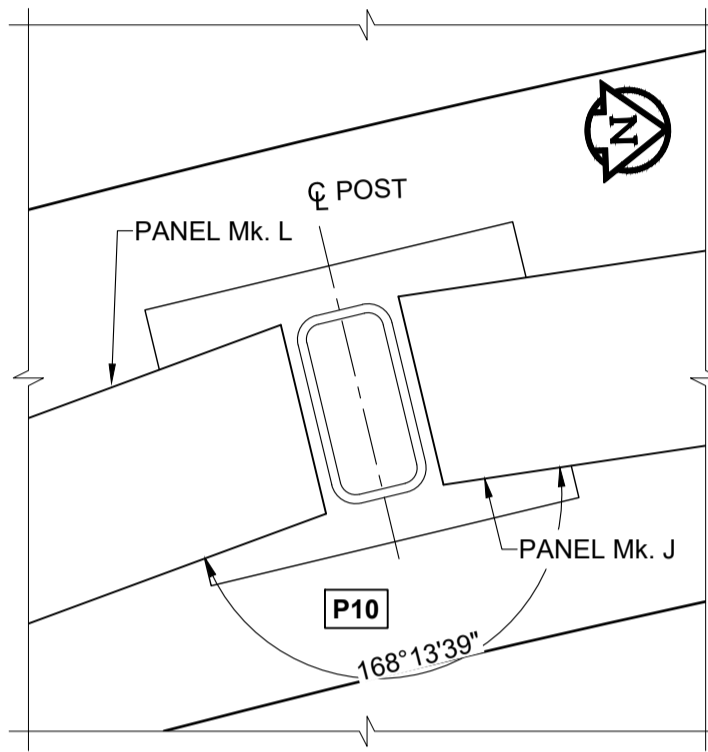
POST Mk. P7 PLAN
SCALE 1:4



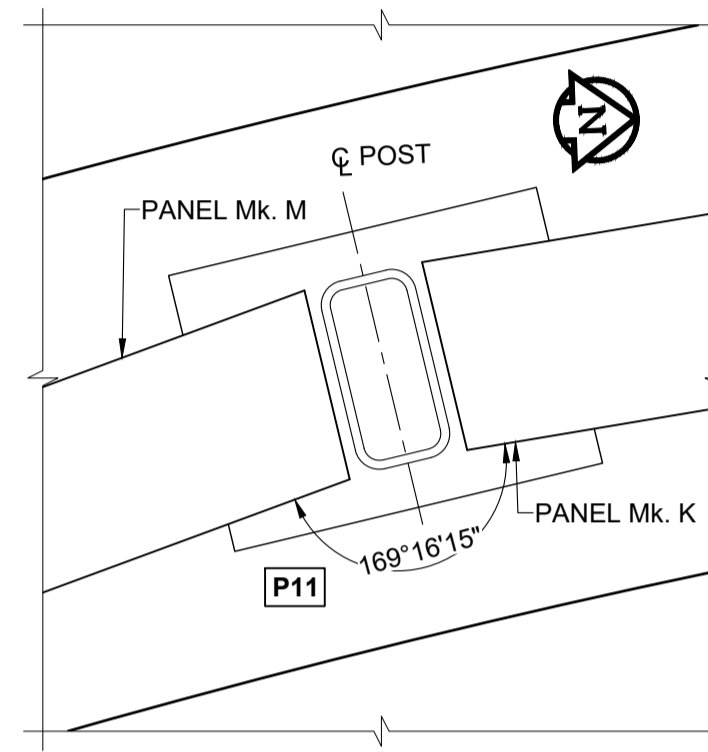
POST Mk. P8 PLAN
SCALE 1:4



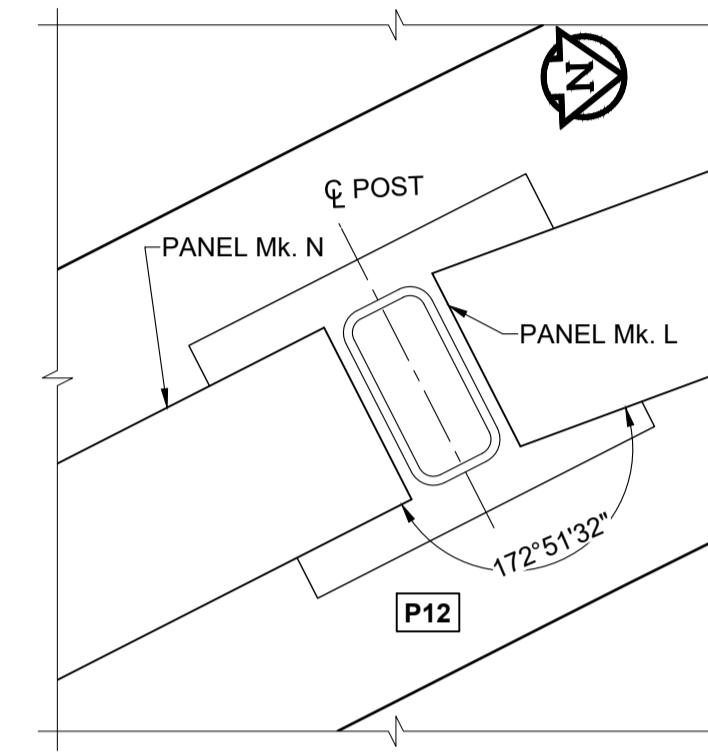
POST Mk. P9 PLAN
SCALE 1:4



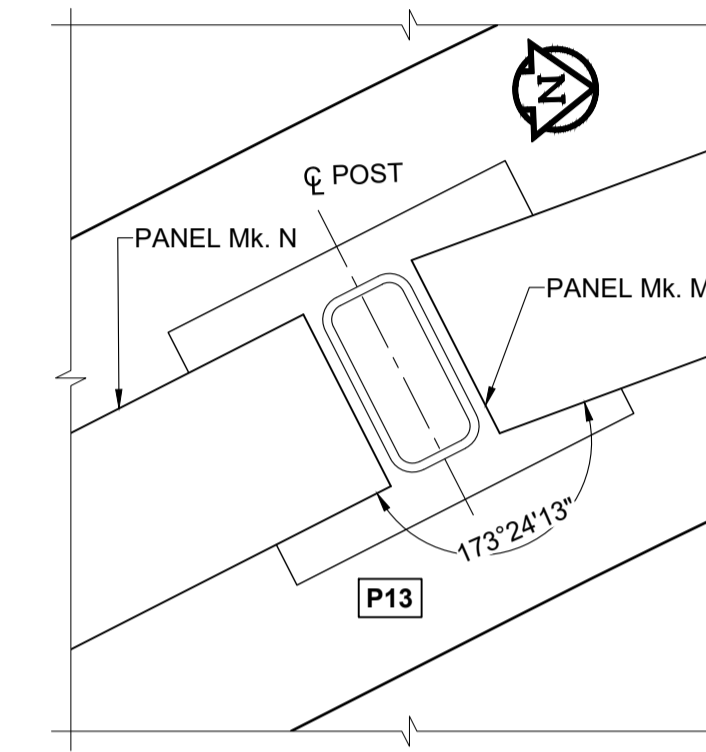
POST Mk. P10 PLAN
SCALE 1:4



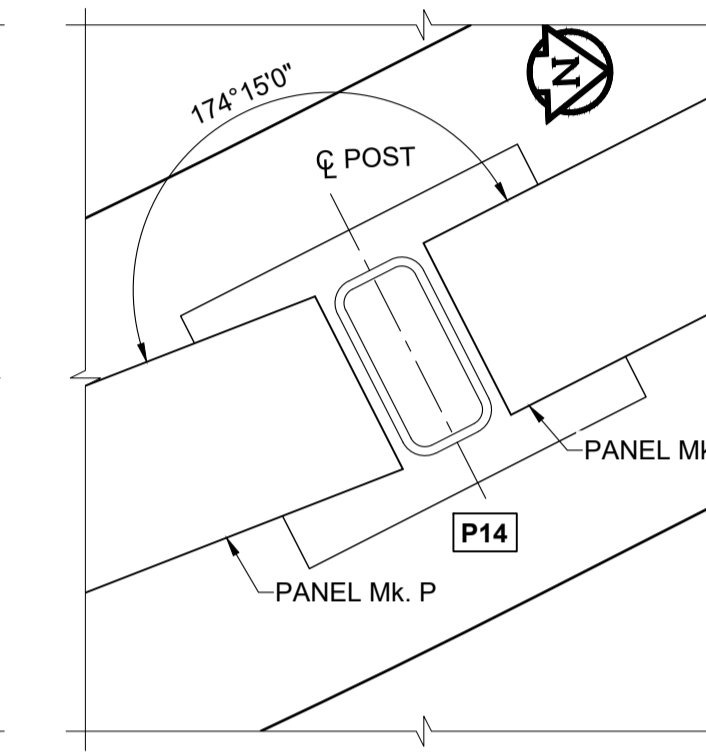
POST Mk. P11 PLAN
SCALE 1:4



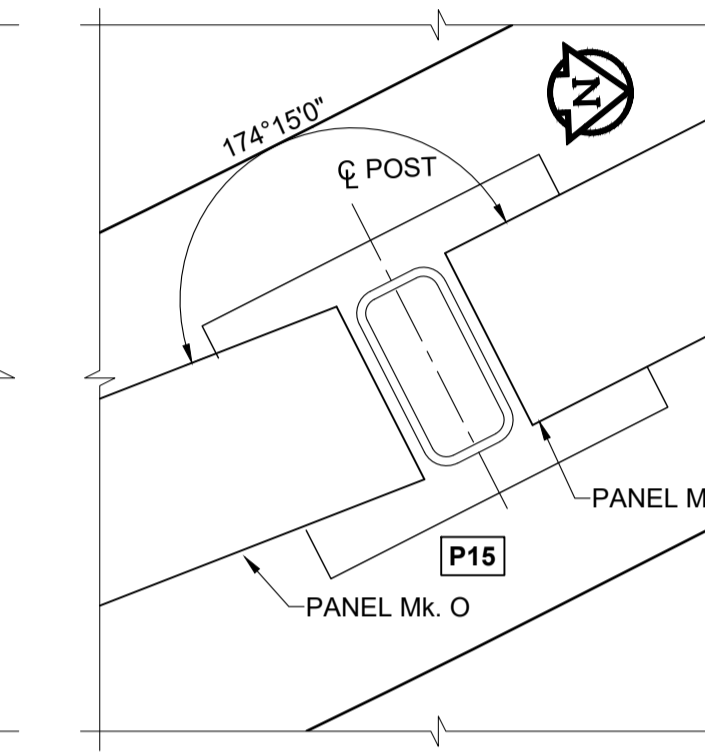
POST Mk. P12 PLAN
SCALE 1:4



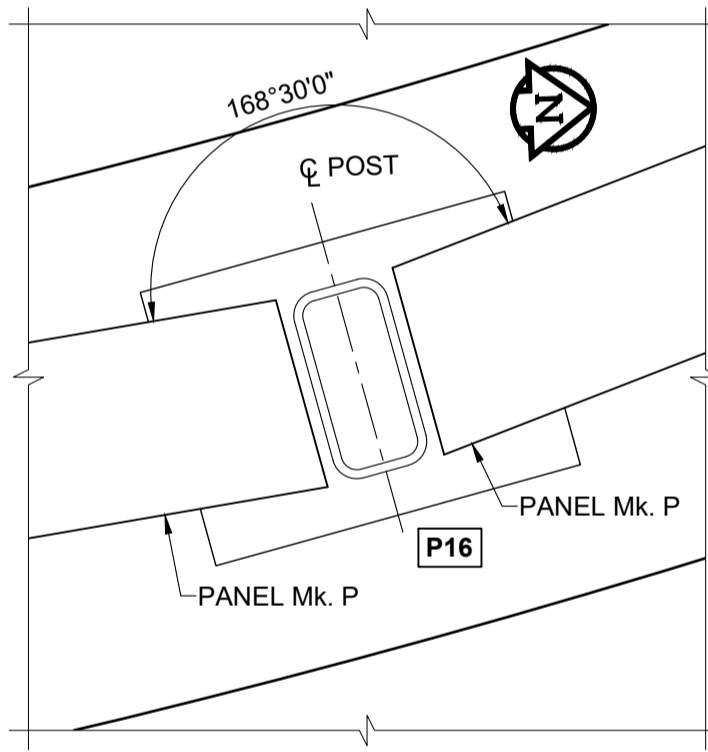
POST Mk. P13 PLAN
SCALE 1:4



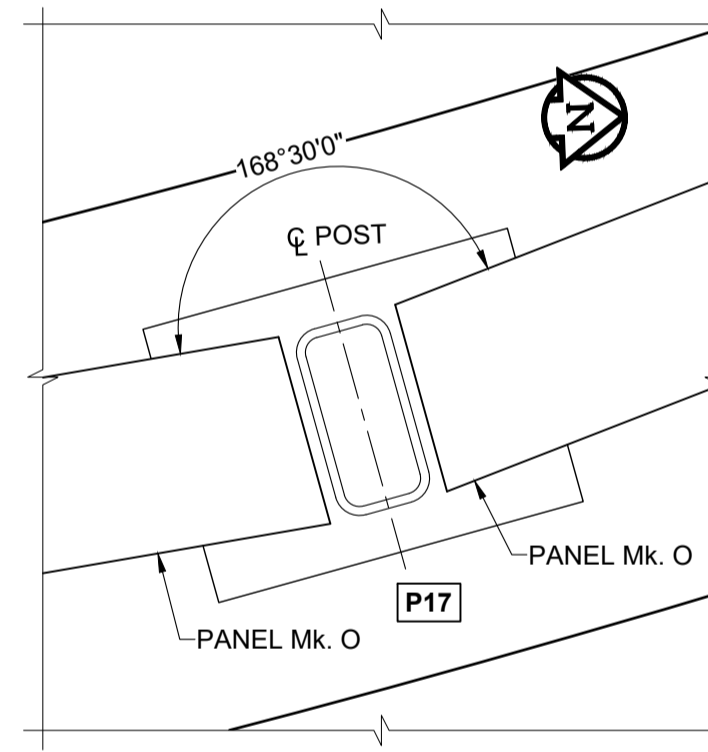
POST Mk. P14 PLAN
SCALE 1:4



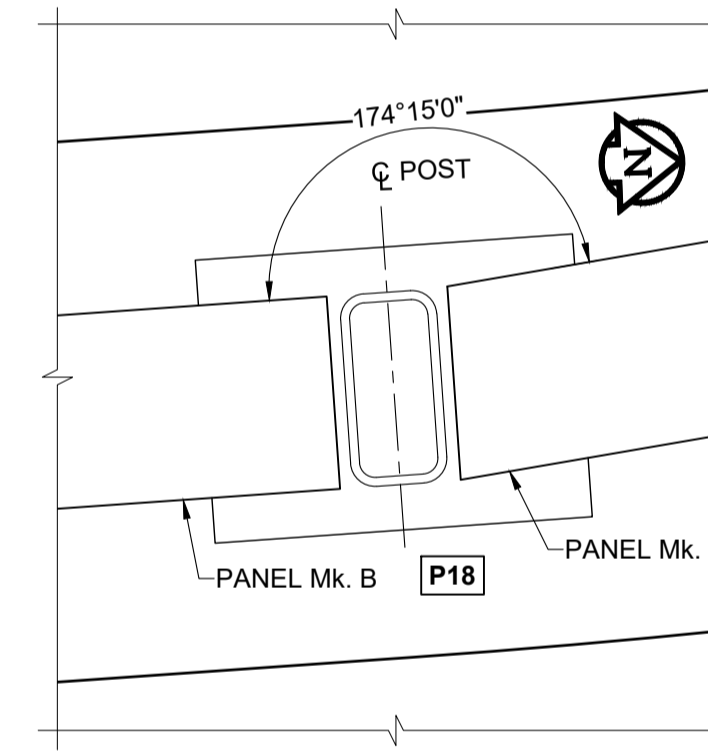
POST Mk. P15 PLAN
SCALE 1:4



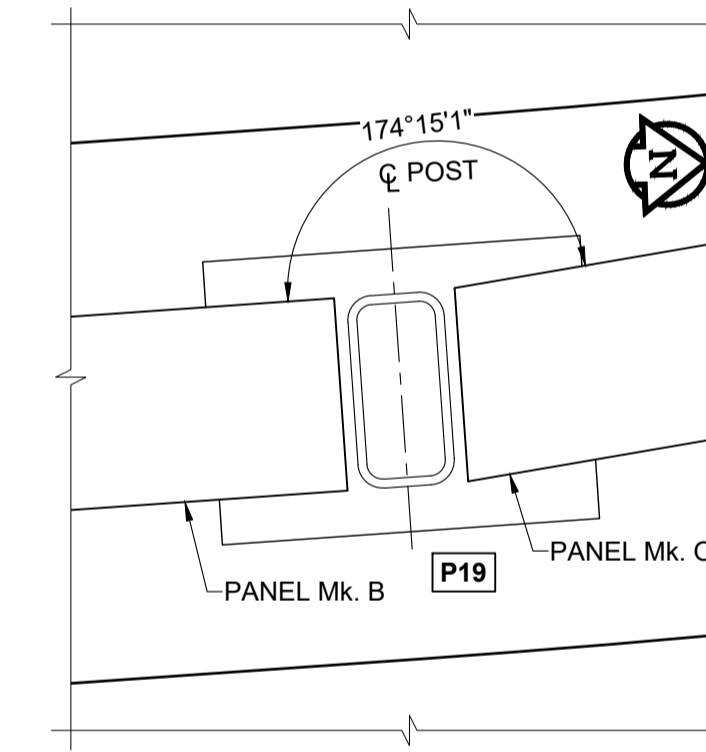
POST Mk. P16 PLAN
SCALE 1:4



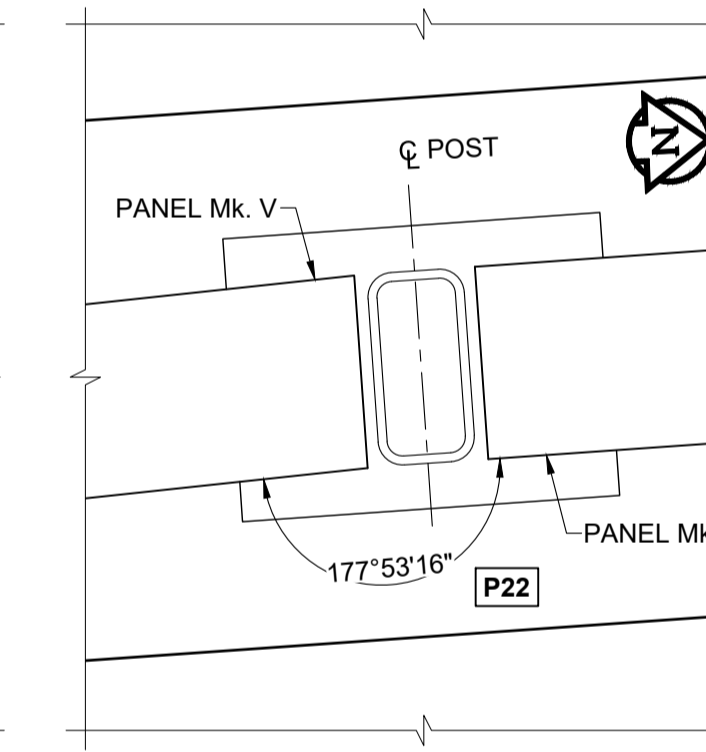
POST Mk. P17 PLAN
SCALE 1:4



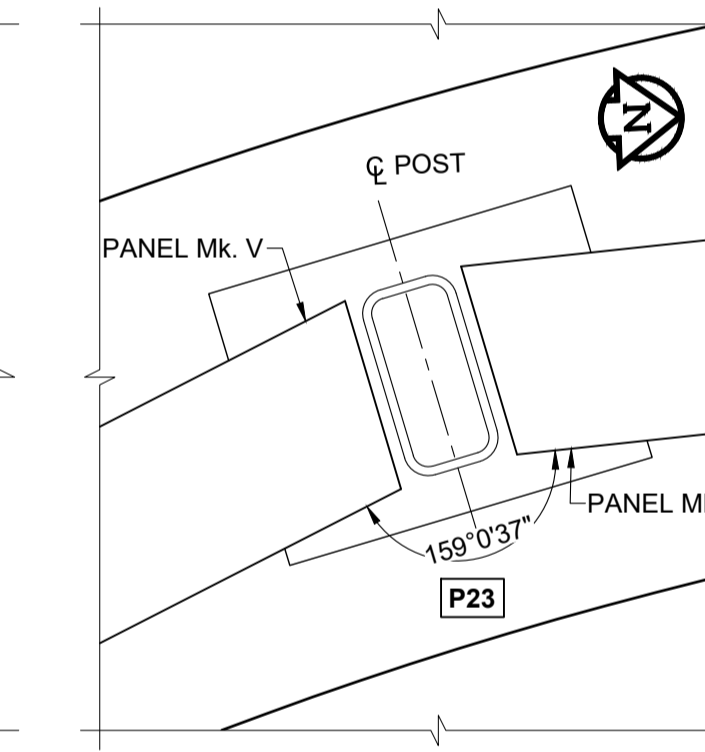
POST Mk. P18 PLAN
SCALE 1:4



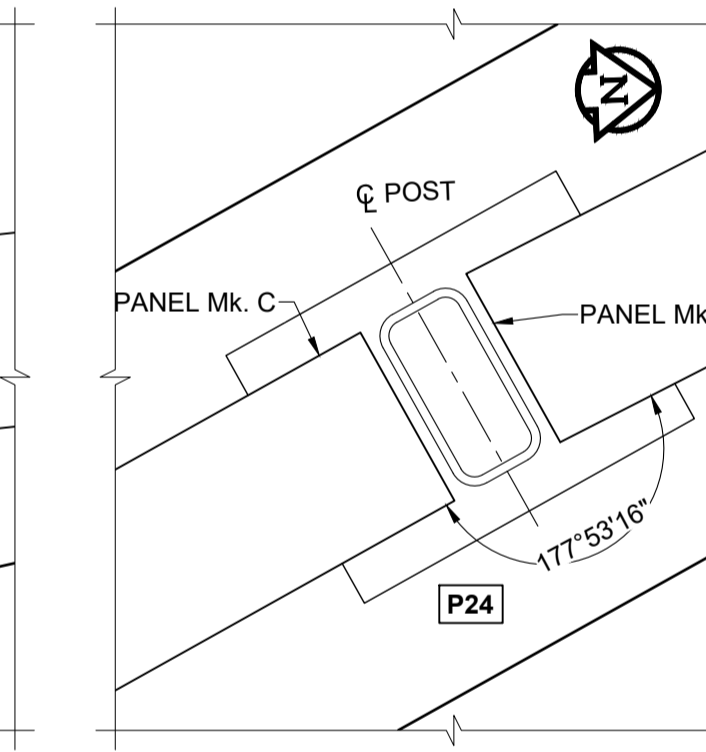
POST Mk. P19 PLAN
SCALE 1:4



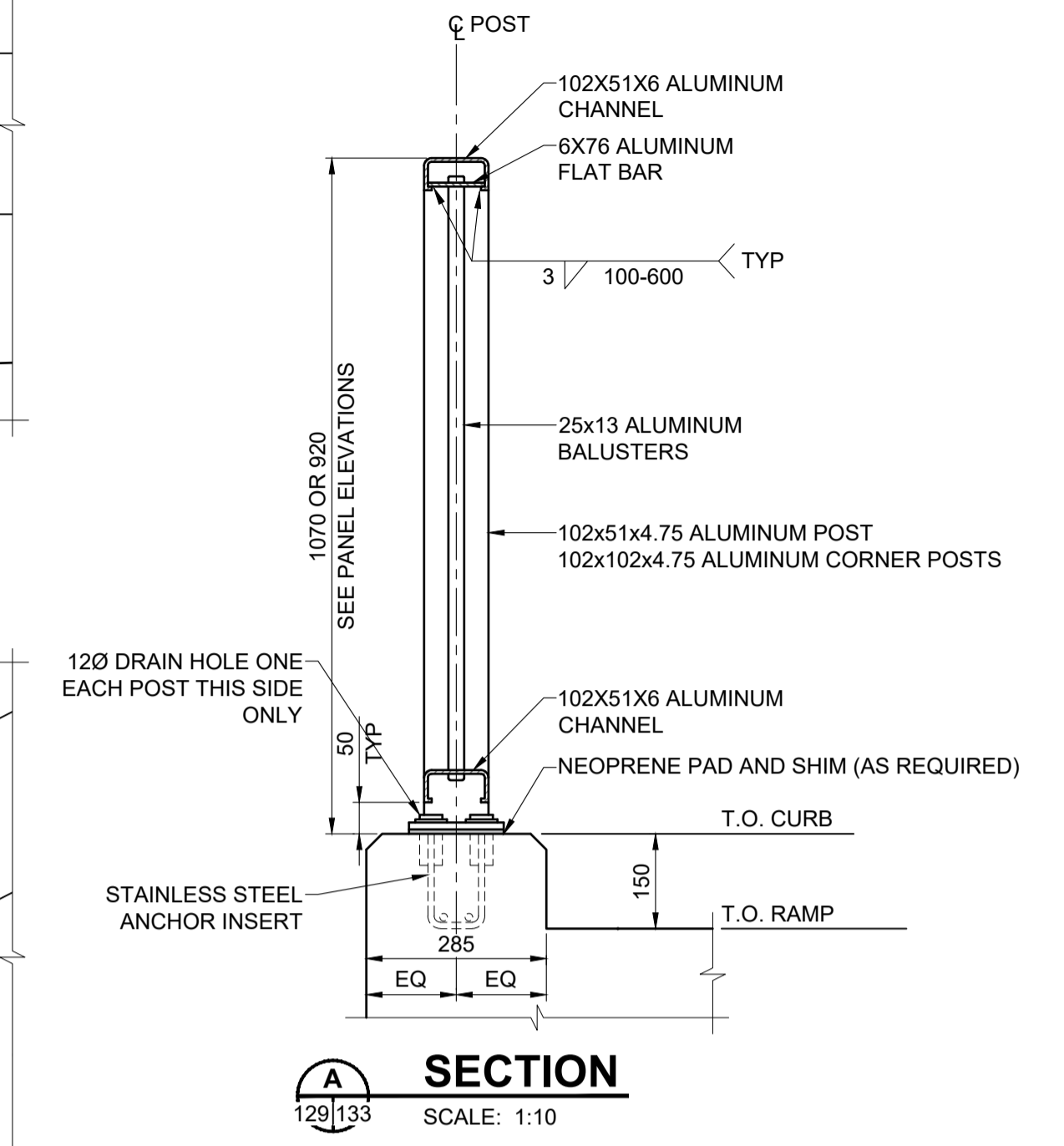
POST Mk. P22 PLAN
SCALE 1:4



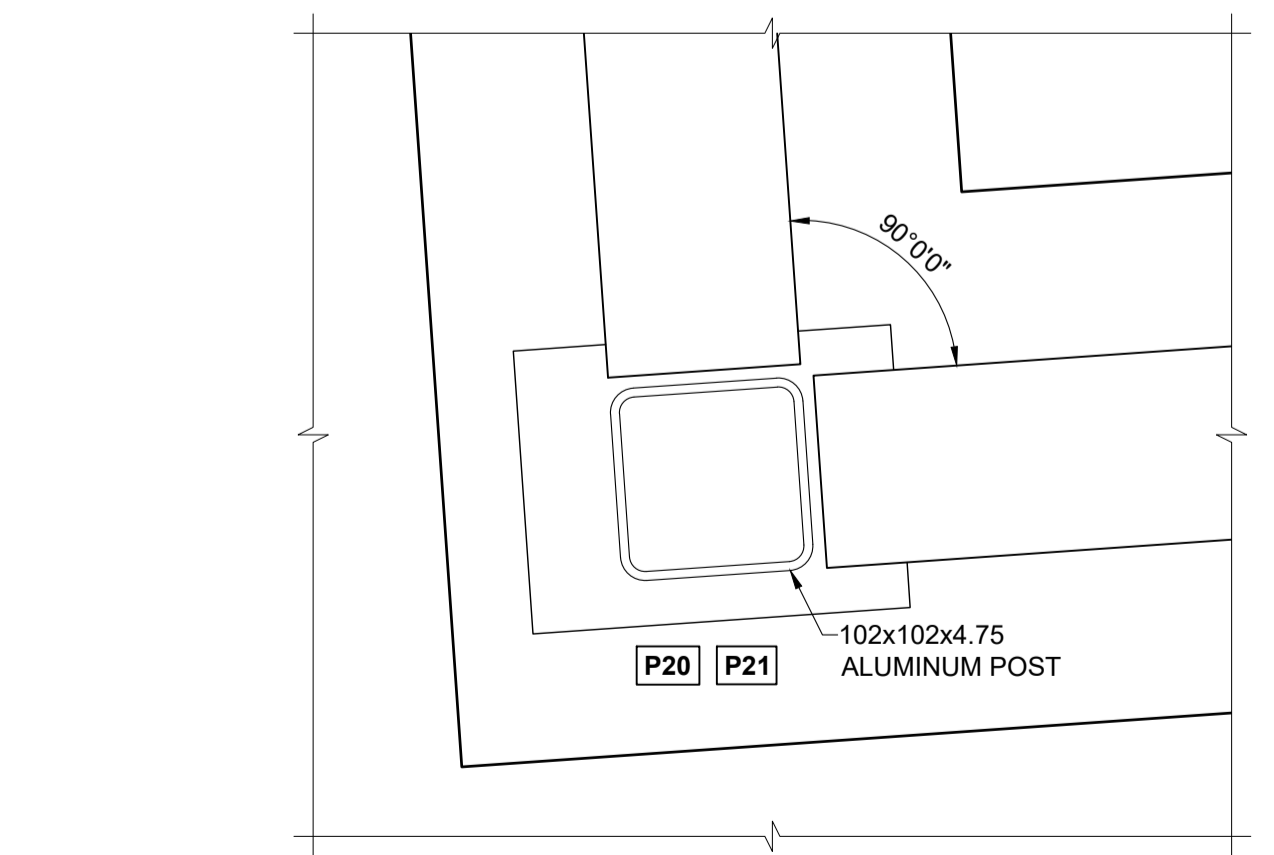
POST Mk. P23 PLAN
SCALE 1:4



POST Mk. P24 PLAN
SCALE 1:4



SECTION
SCALE: 1:10



TYPICAL CORNER POST PLAN
MK. P20 & P21
SCALE 1:4

- NOTES:**
1. ALUMINUM EXTRUSIONS SHALL CONFORM TO ASTM B221 ALLOY 6351-T6.
 2. THE M.I.G. PROCESS OF WELDING SHALL BE USED.
 3. RAIL POSTS AND BALUSTERS SHALL BE SET PLUMB.
 4. EXCEPT WHERE INDICATED, HANDRAIL TOP AND BOTTOM RAILS SHALL BE AT A CONSTANT OFFSET FROM THE TOP OF CURB TAKING INTO ACCOUNT ALL GRADE BREAKS ALONG THE RAMPS LENGTH. SEE DRAWING 120 FOR GRADING PLAN.
 5. PLACE NEOPRENE PAD UNDER EACH POST BETWEEN BASE PLATE OR SHIM AND CONCRETE SURFACE. ALUMINUM SHIMS MAY BE REQUIRED FOR VERTICAL ALIGNMENT.
 6. HANDRAIL ANCHOR INSERTS SHALL BE ACROW-RICHMOND TYPE DGRS-1.

BID OPPORTUNITY No. 602-2018



METRIC
WHOLE NUMBERS INDICATE MILLIMETRES
DECIMALIZED NUMBERS INDICATE METRES

LOCATION APPROVED
UNDERGROUND STRUCTURES

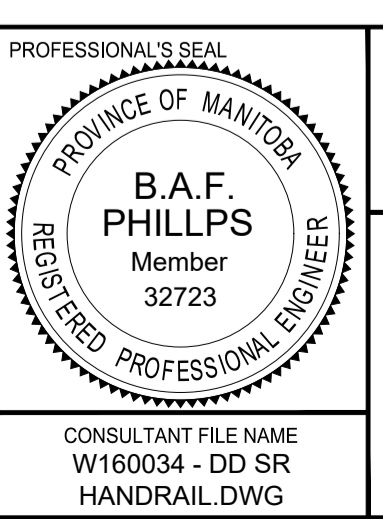
COMMITTEE DATE

NOTE:
LOCATION OF UNDERGROUND STRUCTURES AS SHOWN ARE BASED ON THE BEST INFORMATION AVAILABLE BUT NO GUARANTEE IS GIVEN THAT ALL EXISTING UTILITIES ARE SHOWN OR THAT THE GIVEN LOCATIONS ARE EXACT. CONFIRMATION OF EXISTENCE AND EXACT LOCATION OF ALL SERVICES MUST BE OBTAINED FROM THE INDIVIDUAL UTILITIES BEFORE PROCEEDING WITH CONSTRUCTION.

NO.	REVISIONS	DATE	BY
C	ISSUED FOR ADDENDUM 1	18/10/05	BAP
B	ISSUED FOR TENDER	18/09/04	BAP
A	ISSUED FOR 95% DESIGN REVIEW	18/08/07	BAP

MORRISON HERSHFELD

DESIGNED BY	YM	CHECKED BY	BAP
DRAWN BY	ALP	APPROVED BY	BE
HOR SCALE	AS SHOWN	RELEASED FOR CONSTRUCTION	N/A
VERT SCALE	AS SHOWN	DATE	



THE CITY OF WINNIPEG
PUBLIC WORKS DEPARTMENT
ENGINEERING DIVISION

EMPRESS STREET PROJECT
PEDESTRIAN ACCESSIBILITY RAMPS
SOUTH RAMP
PEDESTRIAN HANDRAIL DETAILS 5

CITY DRAWING NUMBER P-3494-133
SHEET 133 OF 169
DRAWING No. REV 133 C