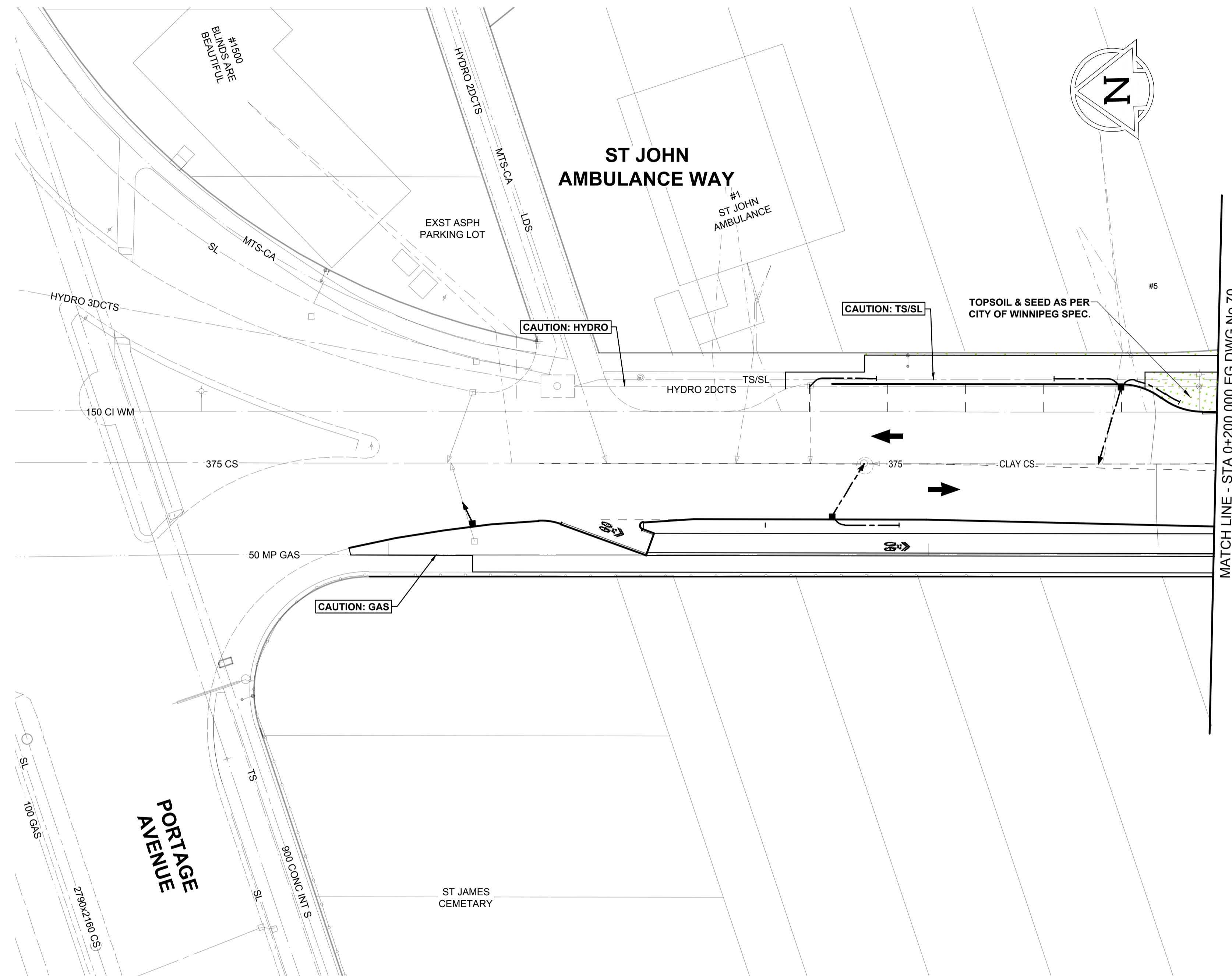


**LANDSCAPE LEGEND**

TOPSOIL & SALT TOLERANT GRASS SEEDING TO MEET CITY OF WINNIPEG SPEC CW 3520 & CW 3540

**NOTES**

- ALL CONSTRUCTION MATERIALS AND METHODS TO BE IN ACCORDANCE WITH "THE CITY OF WINNIPEG, STANDARD CONSTRUCTION SPECIFICATION AND STANDARD DETAILS" (LATEST REVISION).
- CONTRACTOR TO TAKE PRECAUTIONARY STEPS AS OUTLINED IN THE SPECIFICATIONS TO PROTECT EXISTING TREES WITHIN THE LIMITS OF CONSTRUCTION FROM DAMAGE FROM CONSTRUCTION ACTIVITIES.
- CONTRACTOR TO CONFIRM THE LOCATION OF ALL UTILITIES/SERVICES IN THE FIELD PRIOR TO CONSTRUCTION.
- CONTRACTOR MUST FOLLOW THE REQUIREMENTS OF THE VARIOUS UTILITIES.
- CONTRACTOR SHALL INSTALL TOPSOIL AND SEEDING / NATIVE GRASS TO ALL AREAS WHERE MATERIAL IS REMOVED AND NOT RE-ESTABLISHED. FINAL EXTENT & SEEDING TYPE TO BE CONFIRMED ON SITE PRIOR TO CONSTRUCTION.
- TOPSOIL AND SEEDING / NATIVE GRASS SHALL BE PLANTED AT A DISTANCE AS INDICATED BELOW, UNLESS NOTED OTHERWISE ON PLAN:
  - TYPICAL 1.0m OFFSET FROM SIDEWALK / PATHWAY
  - TYPICAL 0.6m OFFSET FROM SILT FENCING
- ALSO REFER TO WRITTEN SPECIFICATION.



**REFERENCE LEGEND**

- SEE SHEET 7 FOR PAVING
- SEE SHEET 22 FOR GRADING
- SEE SHEET 37 FOR PROFILES
- SEE SHEET 54 FOR CYCLE TRACK PROFILES

**METRIC**

WHOLE NUMBERS INDICATE MILLIMETRES  
DECIMALIZED NUMBERS INDICATE METRES

---	GAS	○	MANHOLE	●	CONCRETE PAVEMENT
- - -	MTS / PEDESTAL	□	CATCH BASIN / CATCH PIT	■	CONC SIDEWALK / MEDIAN
- - -	HYDRO / CABINET	△	CURB INLET WITH BOX	▲	ASPHALT PAVEMENT
- - -	CATV / FIBRE OPTIC	⊙	TREE	⊙	PAVING STONE
- - -	TRAFFIC SIGNALS / PIT	⊕	TEST HOLE	⊕	GRAVEL
- - -	LAND DRAINAGE SEWER	TH-12	PROPERTY LINE	---	RAMP CURB
- - -	SANITARY/COMBINED SEWER	⊕	SURVEY BAR	---	PLANING / REMOVAL
- - -	CB LEAD / SSP / DCP	---	FENCE	---	
- - -	WATER MAIN	---	BOC / EDGE OF PAVEMENT	---	
- - -	SUBDRAIN	33.000	ELEVATION	(33.333)	
- - -	DITCH	---	TRAFFIC SIGN	---	
---	EXISTING	---	LEGEND - PLAN	---	EXISTING
---	NEW	---	LEGEND - PLAN	---	NEW

**LOCATION APPROVED UNDERGROUND STRUCTURES**

NOTE: LOCATION OF UNDERGROUND STRUCTURES AS SHOWN ARE BASED ON THE BEST INFORMATION AVAILABLE BUT NO GUARANTEE IS GIVEN THAT ALL EXISTING UTILITIES ARE SHOWN OR THAT THE GIVEN LOCATIONS ARE EXACT. CONFIRMATION OF EXISTENCE AND EXACT LOCATION OF ALL SERVICES MUST BE OBTAINED FROM THE INDIVIDUAL UTILITIES BEFORE PROCEEDING WITH CONSTRUCTION.

BM	-				
ELEV	-				
C	ISSUED FOR ADDENDUM 1	18/09/21	CO		
B	ISSUED FOR TENDER	18/09/04	CO		
A	ISSUED FOR CLIENT REVIEW	18/06/27	CO		
No.	REVISIONS	YY/MM/DD	BY	DATE	18/06/27

**SCATLIFF + MILLER + MURRAY**  
visionary urban design + landscapes

DESIGNED BY	CD	CHECKED BY	DM
DRAWN BY	WF	APPROVED BY	CO
HOR SCALE	1:250	RELEASED FOR CONSTRUCTION	N/A
VERT SCALE	N/A	DATE	18/06/27

PROFESSIONAL'S SEAL  
CHERYL DIXON  
Member No. 117  
CONSULTANT FILE NAME  
602-2018\_Drawing\_P-3494-69-RC.dwg

**THE CITY OF WINNIPEG**  
PUBLIC WORKS DEPARTMENT  
ENGINEERING DIVISION

**EMPRESS STREET PROJECT  
PAVEMENT RECONSTRUCTION  
LANDSCAPING  
ST. JOHN AMBULANCE WAY  
PORTAGE AVE. TO STA 0+200.000 EG**

CITY DRAWING NUMBER P-3494-69  
SHEET 69 OF 168  
DRAWING No. REV 69 B

SCALE: 1:250  
0 5 10 15m

BID OPPORTUNITY No. 602-2018