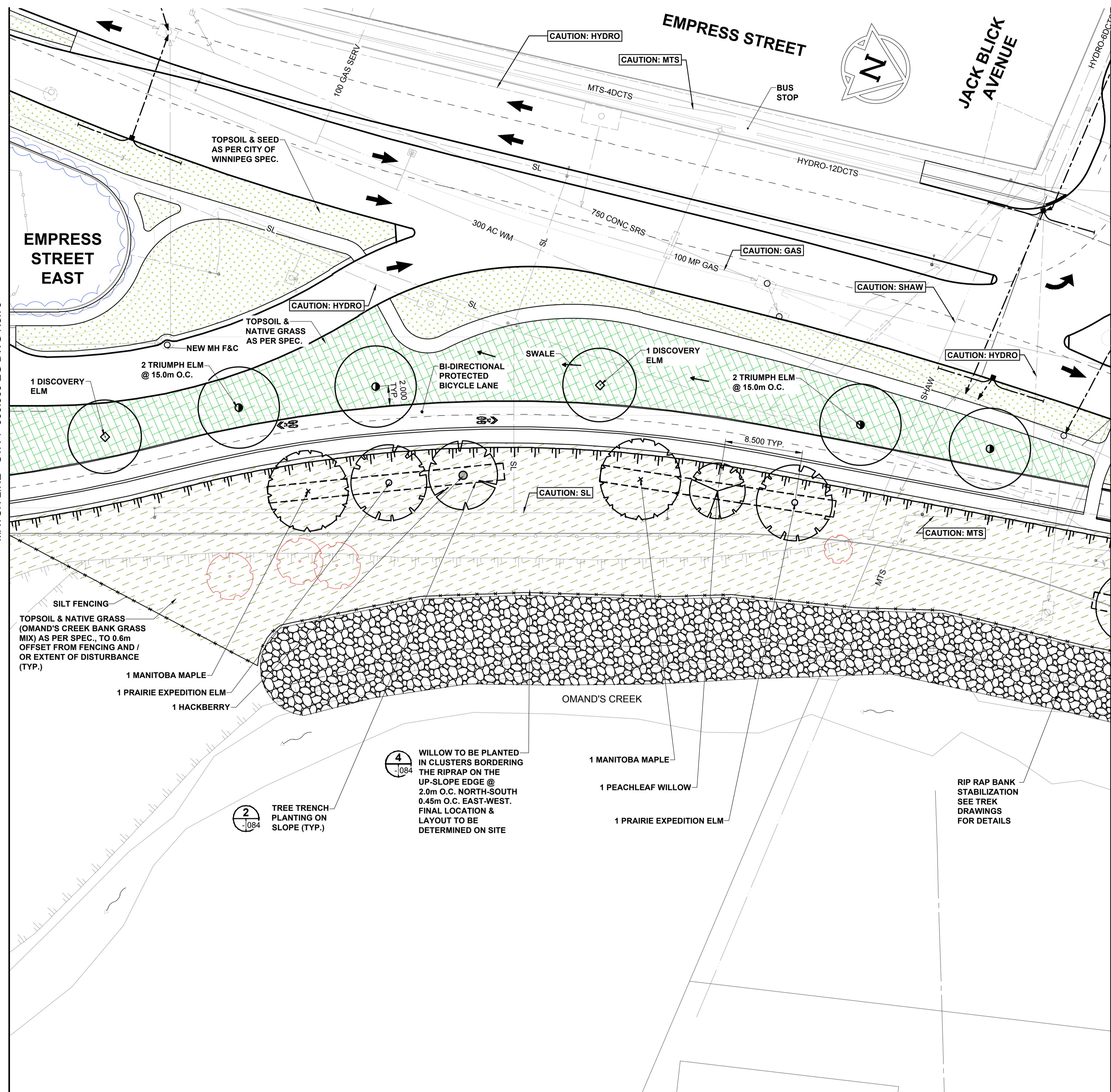


ISO A1 - 564mm x 841mm
 S:\a1\from-service\PROJECTS\2018 Projects\16-0245-004_Empress Overpass\07_CAD\WORKING\602-2018_Drawing_P-3494-77-RC.dwg
 Last Saved: 9/19/2018 11:40 AM by wkx
 Plotted: 9/19/2018 4:52 PM by Windy Fox

SEE DWG No. 78 FOR CONTINUATION OF EMPRESS STREET LANDSCAPE WORKS

MATCH LINE - STA 1+090.000 EG DWG No. 76



- LANDSCAPE LEGEND**
- TOPSOIL & SALT TOLERANT GRASS SEEDING TO MEET CITY OF WINNIPEG SPEC CW 3520 & CW 3540
 - TOPSOIL & NATIVE GRASSES - SALT TOLERANT GRASS MIX 2 YEAR ACCEPTANCE PERIOD, FOLLOWED BY A 1 YEAR MAINTENANCE AND WARRANTY
 - TOPSOIL & NATIVE GRASSES - OMAND'S CREEK BANK GRASS MIX 2 YEAR ACCEPTANCE PERIOD, FOLLOWED BY A 1 YEAR MAINTENANCE AND WARRANTY
 - EXISTING TREES TO REMAIN
 - EXISTING TREES TO BE TRIMMED
 - EXISTING TREES TO BE REMOVED

- NOTES**
1. ALL CONSTRUCTION MATERIALS AND METHODS TO BE IN ACCORDANCE WITH THE CITY OF WINNIPEG, STANDARD CONSTRUCTION SPECIFICATION AND STANDARD DETAILS' (LATEST REVISION).
 2. CONTRACTOR TO TAKE PRECAUTIONARY STEPS AS OUTLINED IN THE SPECIFICATIONS TO PROTECT EXISTING TREES WITHIN THE LIMITS OF CONSTRUCTION FROM DAMAGE FROM CONSTRUCTION ACTIVITIES.
 3. CONTRACTOR TO CONFIRM THE LOCATION OF ALL UTILITIES/SERVICES IN THE FIELD PRIOR TO CONSTRUCTION.
 4. CONTRACTOR MUST FOLLOW THE REQUIREMENTS OF THE VARIOUS UTILITIES.
 5. FINAL LOCATION OF REST STOPS TO BE CONFIRMED ON SITE PRIOR TO CONSTRUCTION.
 6. CONTRACTOR SHALL INSTALL TOPSOIL AND SEEDING / NATIVE GRASS TO ALL AREAS WHERE MATERIAL IS REMOVED AND NOT RE-ESTABLISHED. FINAL EXTENT & SEEDING TYPE TO BE CONFIRMED ON SITE PRIOR TO CONSTRUCTION.
 7. TOPSOIL AND SEEDING / NATIVE GRASS SHALL BE PLANTED AT A DISTANCE AS INDICATED BELOW, UNLESS NOTED OTHERWISE ON PLAN:
 - a. TYPICAL 1.0m OFFSET FROM SIDEWALK / PATHWAY
 - b. TYPICAL 0.6m OFFSET FROM SILT FENCING
 8. CONTRACTOR TO STAKE PROPOSED TREE LOCATION ON SITE, LAYOUT TO BE APPROVED BY LANDSCAPE ARCHITECT PRIOR TO INSTALLATION.
 9. SEE SHEET 84 FOR PROPOSED TREE PLANTING DETAILS
 10. BOULEVARD TREES SHALL BE PLANTED AT A MINIMUM DISTANCE FROM ABOVE GROUND STRUCTURES AS INDICATED BELOW:
 - a. MINIMUM DISTANCE FROM STREET INTERSECTIONS: 6m
 - b. MINIMUM DISTANCE FROM LIGHT STANDARDS: 3m
 - c. MINIMUM DISTANCE FROM PRIVATE APPROACHES: 1.5m
 - d. MINIMUM DISTANCE FROM HYDRANTS: 3m
 - e. MINIMUM DISTANCE FROM HYDRO POLES: 3m
 - f. MINIMUM DISTANCE FROM MANHOLES/CB'S/SEWER GRATES: 3m
 11. ALSO REFER TO WRITTEN SPECIFICATION.

- REFERENCE LEGEND**
- SEE SHEET 15 FOR PAVING
 - SEE SHEET 30 FOR GRADING
 - SEE SHEET 47 FOR PROFILES
 - SEE SHEET 57 & 58 FOR CYCLE TRACK PROFILES

METRIC
 WHOLE NUMBERS INDICATE MILLIMETRES
 DECIMALIZED NUMBERS INDICATE METRES

	GAS		MANHOLE		CONCRETE PAVEMENT
	MTS / PEDESTAL		CATCH BASIN / CATCH PIT		CONC SIDEWALK / MEDIAN
	HYDRO / CABINET		CURB INLET WITH BOX		ASPHALT PAVEMENT
	CATV / FIBRE OPTIC		TREE		PAVING STONE
	TRAFFIC SIGNALS / PIT		TEST HOLE		GRAVEL
	LAND DRAINAGE SEWER		PROPERTY LINE		RAMP CURB
	SANITARY/COMBINED SEWER		SURVEY BAR		PLANING / REMOVAL
	CB LEAD / SSP / DCP		FENCE		
	WATER MAIN		BOC / EDGE OF PAVEMENT		
	SUBDRAIN		ELEVATION (33.333)		
	DITCH		TRAFFIC SIGN		
	EXISTING		LEGEND - PLAN		EXISTING
	NEW		LEGEND - PLAN		NEW

LOCATION APPROVED
 UNDERGROUND STRUCTURES

DATE: _____

NOTE:
 LOCATION OF UNDERGROUND STRUCTURES AS SHOWN ARE BASED ON THE BEST INFORMATION AVAILABLE BUT NO GUARANTEE IS GIVEN THAT ALL EXISTING UTILITIES ARE SHOWN OR THAT THE GIVEN LOCATIONS ARE EXACT. CONFIRMATION OF EXISTENCE AND EXACT LOCATION OF ALL SERVICES MUST BE OBTAINED FROM THE INDIVIDUAL UTILITIES BEFORE PROCEEDING WITH CONSTRUCTION.

BM -			
ELEV -			
C	ISSUED FOR ADDENDUM 1	18/09/21	CO
B	ISSUED FOR TENDER	18/09/04	CO
A	ISSUED FOR CLIENT REVIEW	18/06/27	CO
No.	REVISIONS	YYMMDD	BY

SCATLIFF + MILLER + MURRAY
 visionary urban design + landscapes

DESIGNED BY: CD CHECKED BY: DM
 DRAWN BY: WF APPROVED BY: CO

HOR SCALE: 1:250
 VERT SCALE: N/A

RELEASED FOR CONSTRUCTION: N/A
 DATE: 18/06/27

PROFESSIONAL SEAL

CHERYLL DIXON
 Member No. 117

CONSULTANT FILE NAME
 602-2018_Drawing_P-3494-77-RC.dwg

THE CITY OF WINNIPEG
 PUBLIC WORKS DEPARTMENT
 ENGINEERING DIVISION

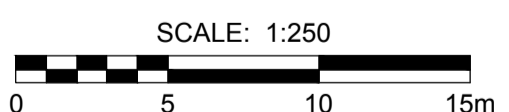
EMPIRE STREET PROJECT
 PAVEMENT RECONSTRUCTION
 LANDSCAPING
 EMPRESS STREET EAST
 STA 1+090.000 EG TO EMPRESS STREET

CITY DRAWING NUMBER: P-3494-77
 SHEET 77 OF 168
 DRAWING No. REV 77 B

902-984-3100

PLANT LIST
 (REFER TO SHEET 84 FOR FULL PLANT SCHEDULE & DETAILS)

COMMON NAME	DECIDUOUS TREES
BARON MANITOBA MAPLE	
DELTA HACKBERRY	
PEACHLEAF WILLOW	
PARRIE EXPEDITION ELM	
DISCOVERER ELM	
TRIUMPH HYBRID ELM	



BID OPPORTUNITY No. 602-2018