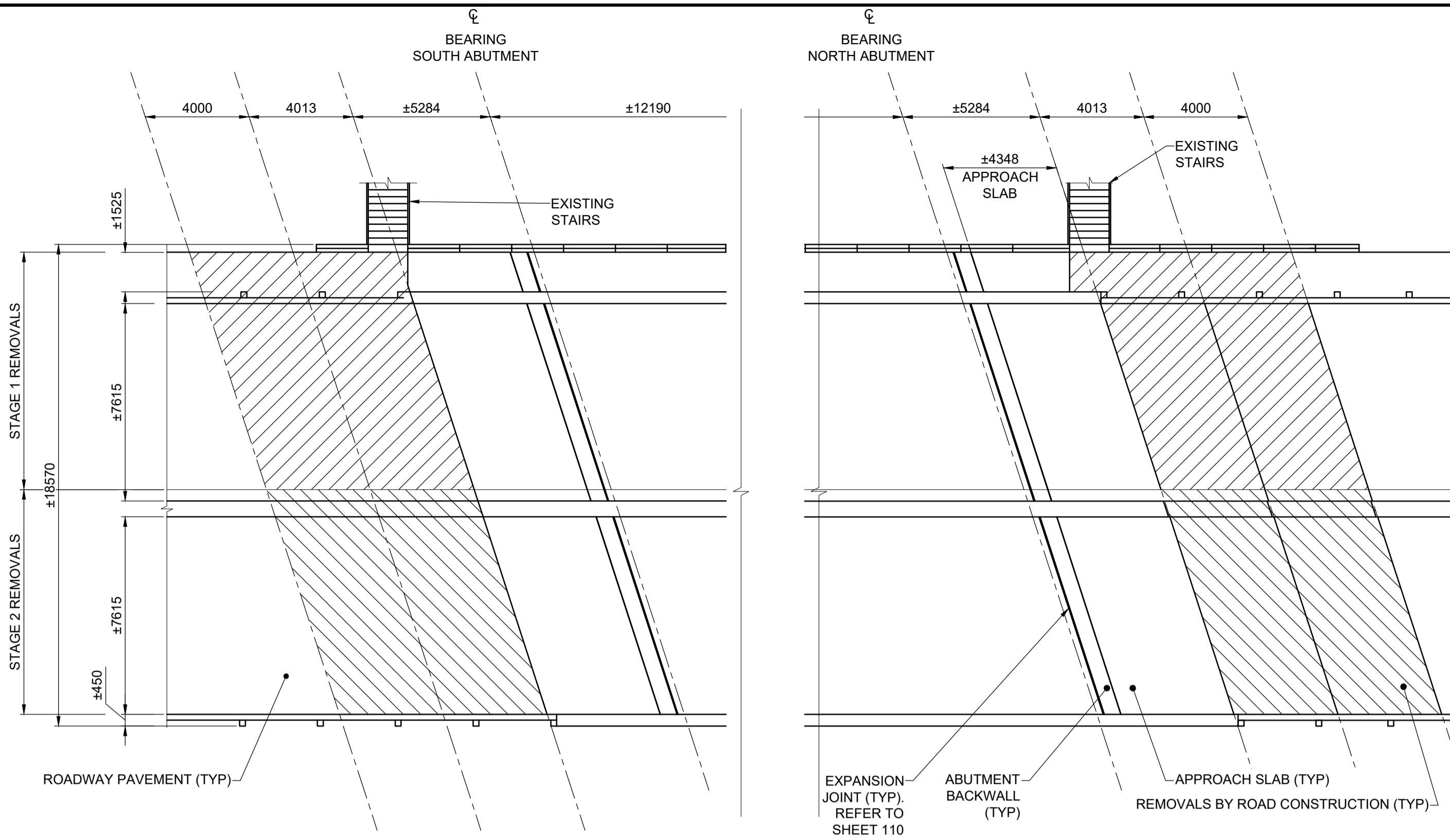
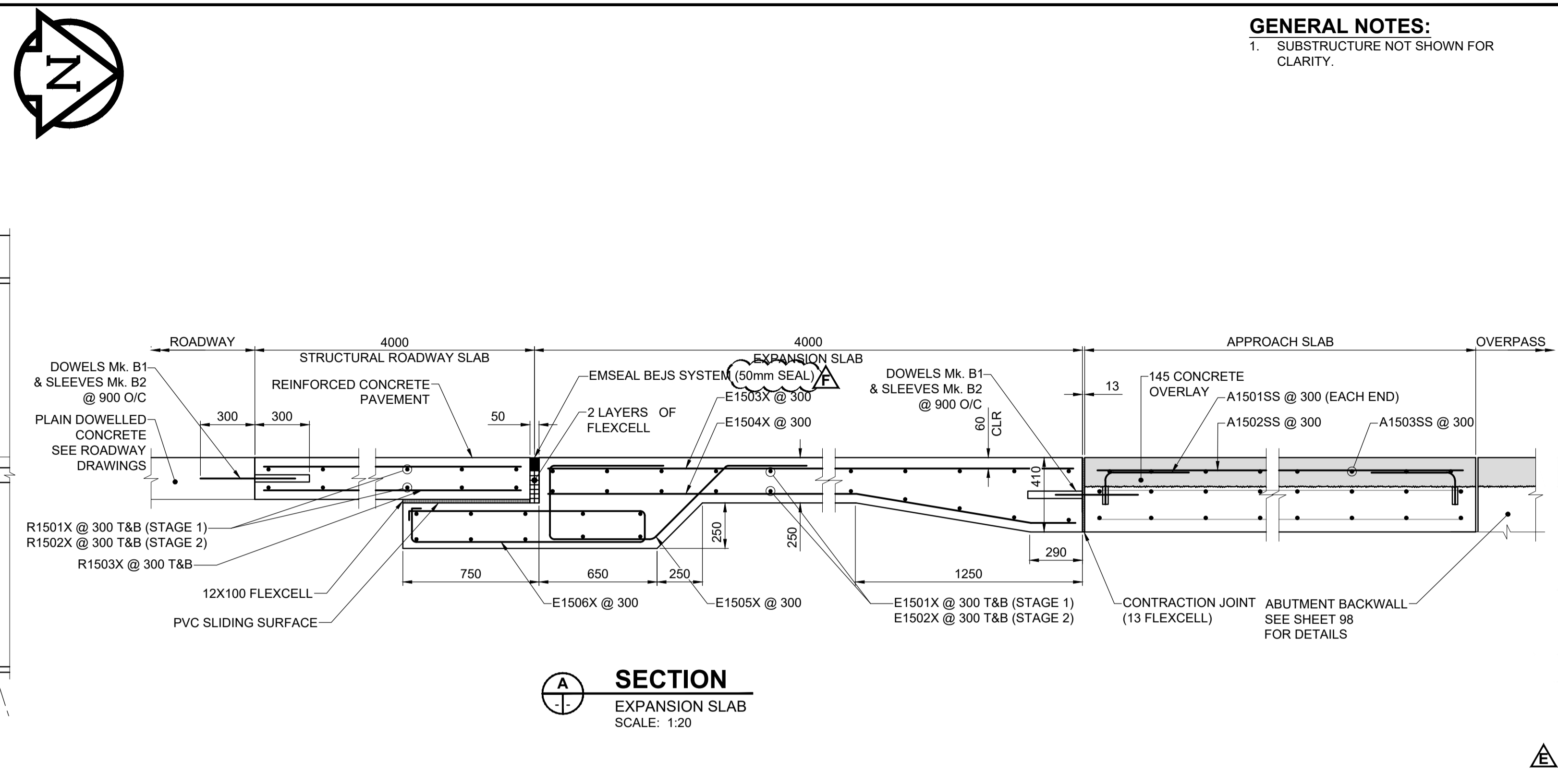


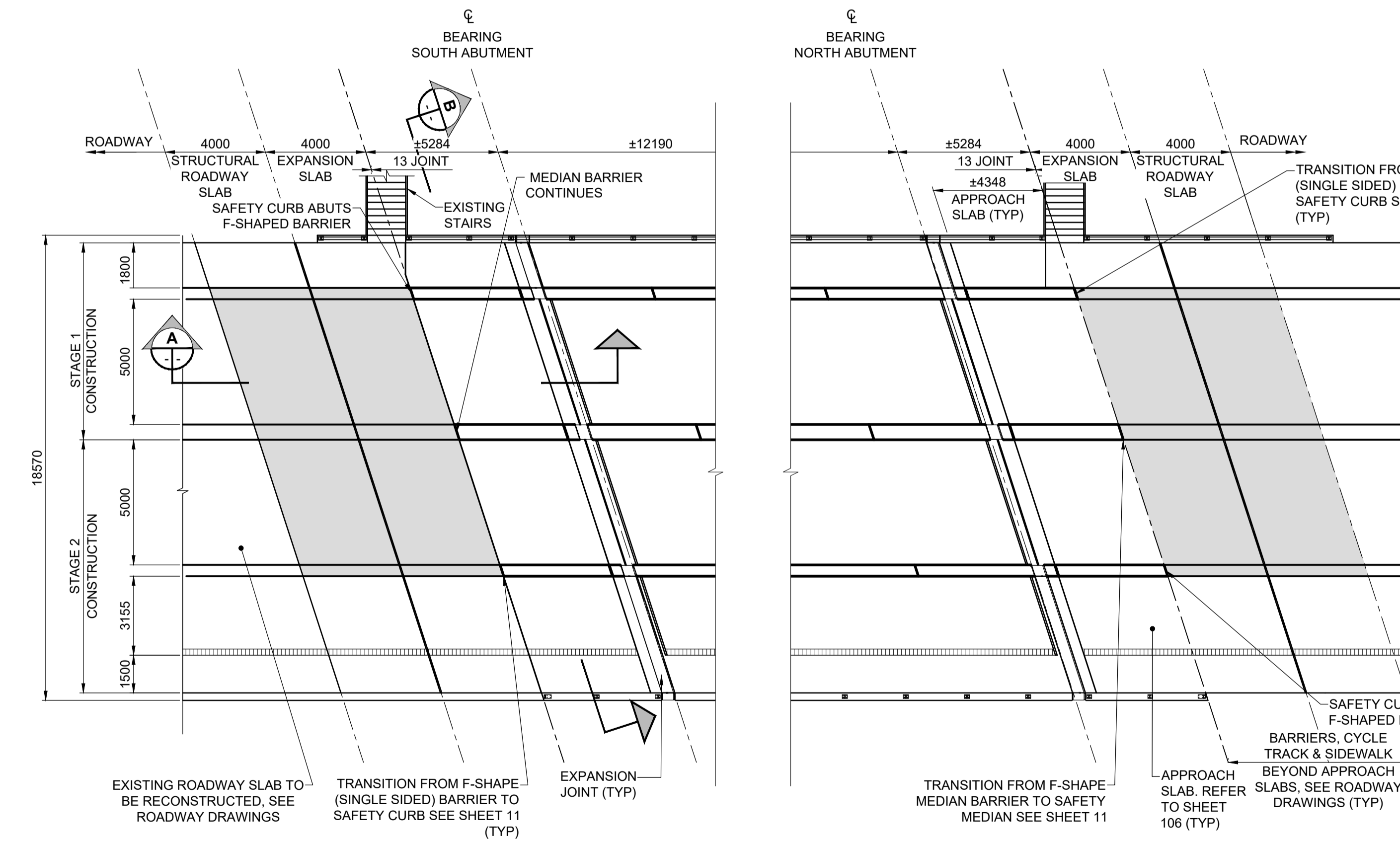
GENERAL NOTES:
 1. SUBSTRUCTURE NOT SHOWN FOR CLARITY.



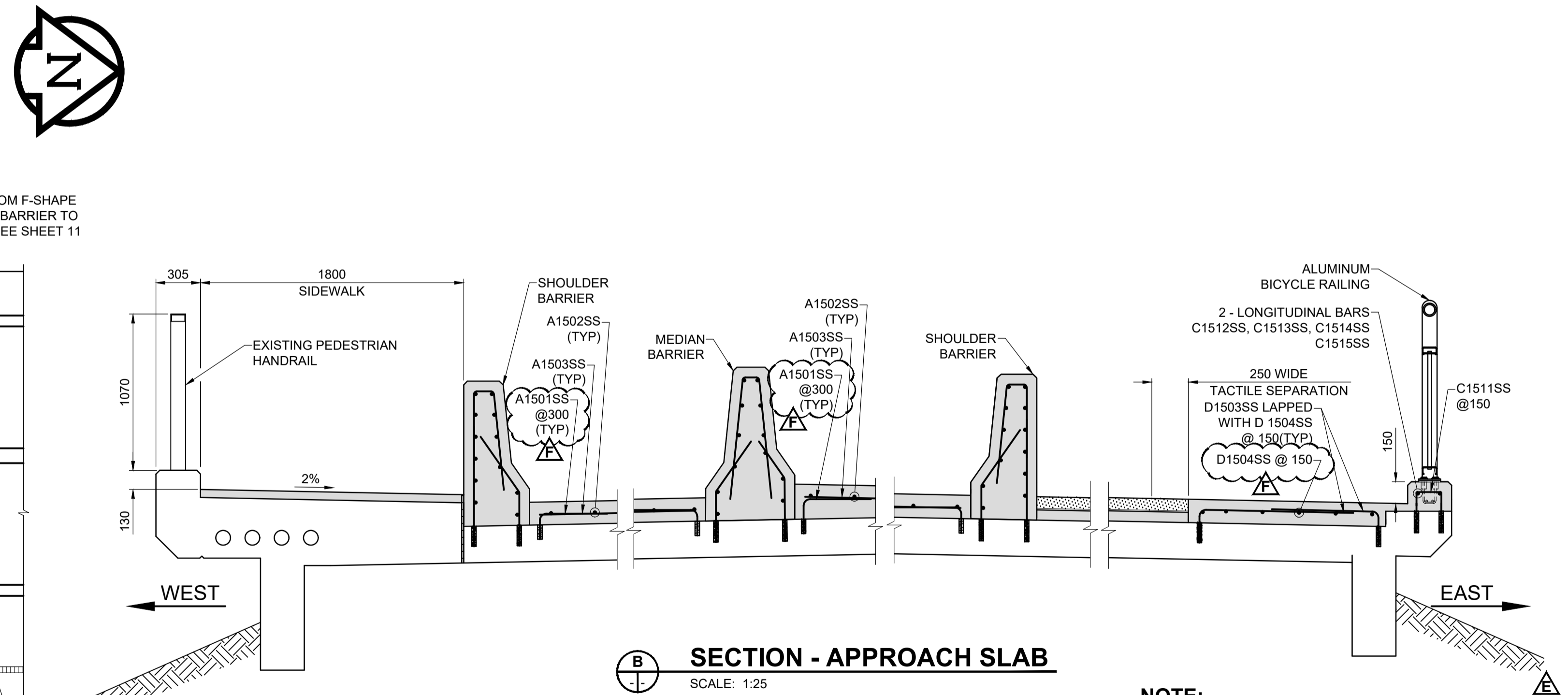
**PLAN OF EXISTING ROADWAY SLAB
 REMOVAL**
 SCALE 1:150



**SECTION
 EXPANSION SLAB**
 SCALE: 1:20



**PLAN OF EXPANSION AND ROADWAY
 SLAB CONSTRUCTION**
 SCALE 1:150



SECTION - APPROACH SLAB
 SCALE: 1:25

NOTE:
 1. FOR BARRIER AND CURB REINFORCING DETAILS SEE SHEET 107.

LEGEND:

- NEW CONCRETE
- SLAB REMOVAL STAGE 1
- SLAB REMOVAL STAGE 2



METRIC
 WHOLE NUMBERS INDICATE MILLIMETRES
 DECIMALIZED NUMBERS INDICATE METRES

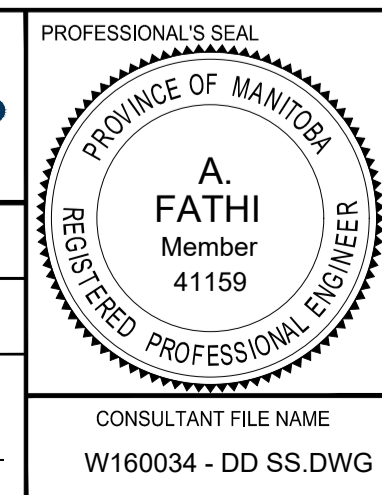
**LOCATION APPROVED
 UNDERGROUND STRUCTURES**

NOTE:
 LOCATION OF UNDERGROUND STRUCTURES AS SHOWN ARE BASED ON THE BEST INFORMATION AVAILABLE BUT NO GUARANTEE IS GIVEN THAT ALL EXISTING UTILITIES ARE SHOWN OR THAT THE GIVEN LOCATIONS ARE EXACT. CONFIRMATION OF EXISTENCE AND EXACT LOCATION OF ALL SERVICES MUST BE OBTAINED FROM THE INDIVIDUAL UTILITIES BEFORE PROCEEDING WITH CONSTRUCTION.

NO.	REVISIONS	DATE	BY
F	ISSUED FOR ADDENDUM 2	18/10/16	BAP
E	ISSUED FOR ADDENDUM 1	18/10/05	BAP
D	ISSUED FOR TENDER	18/03/04	BAP
C	ISSUED FOR 95% DESIGN REVIEW	18/08/07	BAP
B	ISSUED FOR 50% DESIGN REVIEW REV 1	18/06/28	AF
A	ISSUED FOR 50% DESIGN REVIEW	18/04/03	AF



DESIGNED BY	AF	CHECKED BY	YM
DRAWN BY	ALP	APPROVED BY	BE
HOR SCALE	AS SHOWN	RELEASED FOR CONSTRUCTION	N/A
VERT SCALE	AS SHOWN	DATE	



**THE CITY OF WINNIPEG
 PUBLIC WORKS DEPARTMENT
 ENGINEERING DIVISION**

**EMPRESS STREET PROJECT
 OVERPASS REHABILITATION WORKS
 SUPERSTRUCTURE
 EXPANSION SLAB AND
 STRUCTURAL ROADWAY SLAB**

CITY DRAWING NUMBER: P-3494-112
 SHEET 112 OF 169
 DRAWING NO. REV 112 F

BID OPPORTUNITY No. 602-2018

O:\Winnipeg\Proj\160034\Design\Drawings\6 Sheets\Detailed\Structural\160034-DD-SS.dwg, Last Saved: 10/15/2018 3:22 PM, by: A.Heggen, Plotted: 10/15/2018 3:24 PM, by: Alex Heggen