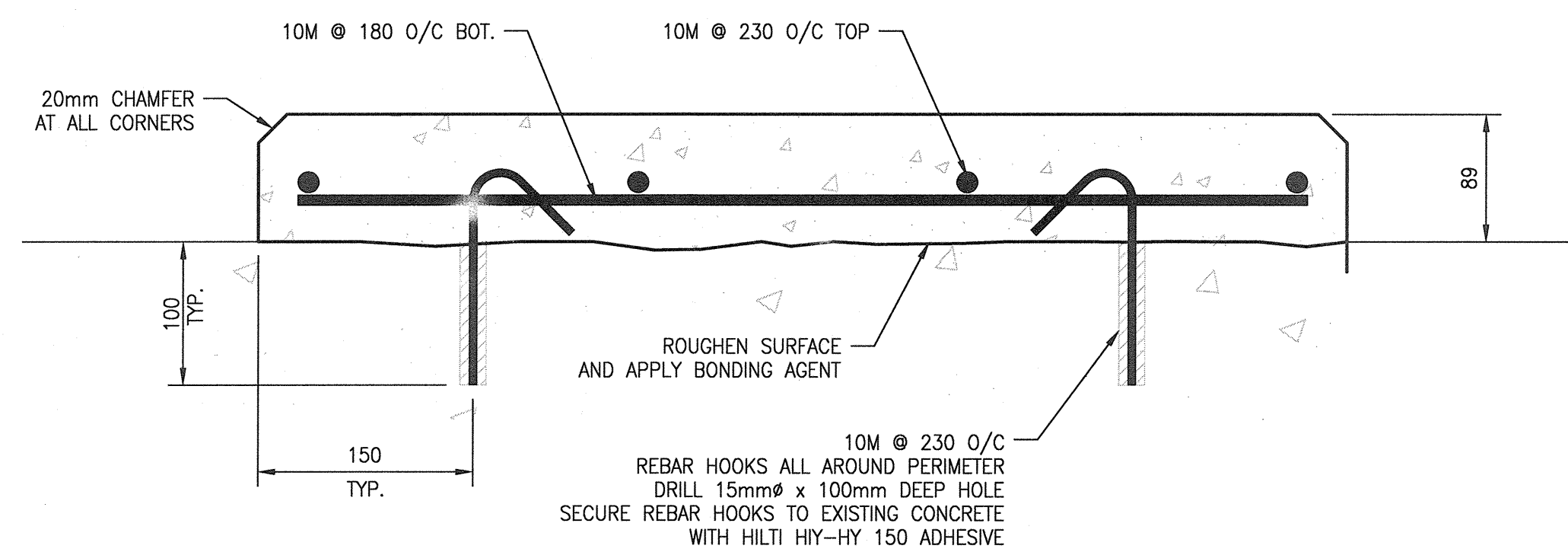


**PLAN: HOUSEKEEPING PAD**  
SCALE: 1:4



**SECTION: HOUSEKEEPING PAD**  
SCALE: 1:4

**GENERAL NOTES:**

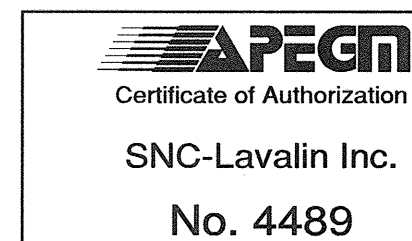
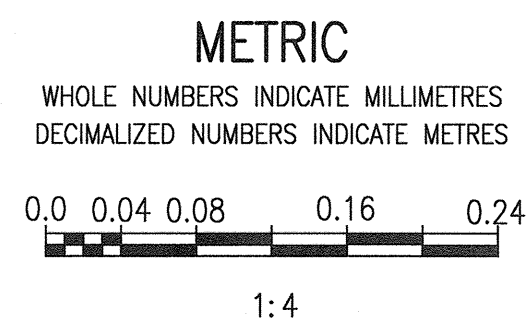
**DESIGN LOAD**

- THE HOUSEKEEPING PAD SHOWN IS NOT STRUCTURAL. THE SUPPORTING STRUCTURE UPON WHICH THE HOUSEKEEPING PAD IS INSTALLED SHALL BE CAPABLE OF SUPPORTING ALL LOADS AND DYNAMIC EFFECTS.
- THE HOUSEKEEPING PAD HAS NOT BEEN DESIGNED FOR CORROSIVE ENVIRONMENTS AND MODIFICATION TO SUIT THE INSTALLED ENVIRONMENT IS BY OTHERS.
- THIS DRAWING WAS ISSUED FOR CONSTRUCTION IN AUGUST 2017, BUT THE WORK HAS NOT BEEN CONSTRUCTED YET. THE DRAWING IS REISSUED AS PART OF THIS PROJECT FOR CONSTRUCTION. THIS DRAWING IS TO BE USED FOR INDOOR HOUSEKEEPING PADS.

**CONCRETE**

- WORK, MATERIALS AND TESTING SHALL BE IN CONFORMANCE WITH CSA A23.1, AND CSA A23.2.
- CONCRETE SHALL BE READY MIXED, CONFORMING TO CSA A23.1 (ALTERNATIVE 1), AND AS NOTED HEREIN:  
CEMENT TYPE: GU  
CONCRETE COMPRESSIVE STRENGTH @ 28 DAYS: 30 MPa  
MAXIMUM AGGREGATE SIZE: 20 MM  
MAXIMUM SLUMP: 100 MM  
AIR CONTENT: 0% TO 3%  
W/C RATIO: 0.45 MAXIMUM  
CLASS OF SULPHATE AND CHLORIDE EXPOSURE: S-3 AND C-3
- REINFORCING STEEL SHALL BE NEW BILLET GRADE STEEL MEETING THE REQUIREMENT OF CSA G30.18, GRADE 400.
- SUPPORT REINFORCING STEEL ON SUFFICIENT SUPPORT CHAIRS TO MAINTAIN CONCRETE COVER OF 50mm.
- REMOVE ALL LOOSE AND DELETERIOUS MATERIAL FROM REINFORCING STEEL.
- TOLERANCES SHALL BE AS STIPULATED IN ACI 315.
- SATURATE THE CONCRETE SURFACE FOR ONE HOUR PRIOR TO APPLYING THE BONDED CONCRETE TOPPING. PROVIDE A SATURATED SURFACE DRY CONDITION.
- APPLY LATEX BONDING AGENT IN ACCORDANCE WITH MANUFACTURER'S PRINTED INSTRUCTIONS. BONDING AGENT TO BE DARAWELD 'C'.
- PROVIDE A WET 'BURLAP' CURE FOR 7 DAYS MIN.
- EXPOSED CONCRETE SHALL BE SEALED WITH MEADOWS SEALTIGHT CS-309.
- ALL WORK TO BE EXECUTED IN A NEAT WORKMANLIKE MANNER.

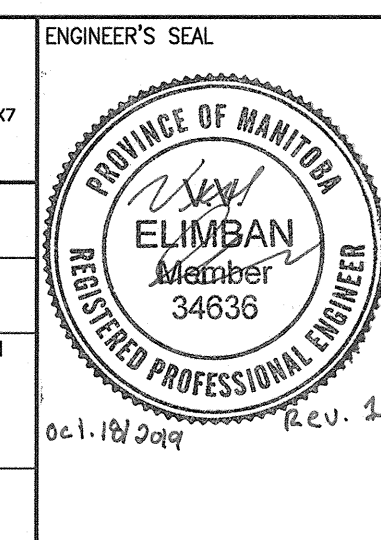
1-0640C-E0005	MCC-C710/MCC-C720E LOCATION PLANT - GALLERY LEVEL
1-0640B-E0003	COLLECTION BUILDING, ELECTRICAL ROOM - NEW WORK
DRAWING NUMBER	REFERENCE DRAWINGS



NO.	REVISIONS	DATE	DESIGN	CHECK
01	ISSUED FOR TENDER AND CONSTRUCTION	2019/10/18	VE	KS
00	ISSUED FOR CONSTRUCTION	2017/08/01	BJC	BJC

**SNC-LAVALIN INC.**  
148 Nature Park Way  
Winnipeg, MB, Canada R3P 0X7  
204-786-8080

DESIGNED BY: B. CLEVEN  
CHECKED BY: D. COATES  
DRAWN BY: S. FUNK  
APPROVED BY: B. CLEVEN  
SCALE: 1:4  
DATE: 2013/02/13  
DATE: 2019/10/18  
ISSUED FOR CONSTRUCTION  
BY: A. WEISS  
CONSULTANT NO.:



**THE CITY OF WINNIPEG**  
WATER AND WASTE DEPARTMENT

MCPHILLIPS PUMPING STATION

PLAN AND SECTIONS  
TYPICAL HOUSEKEEPING PAD  
DETAILS

CITY DRAWING NUMBER	SHEET	REV.	SIZE
1-0640B-E0005	001	01	A1