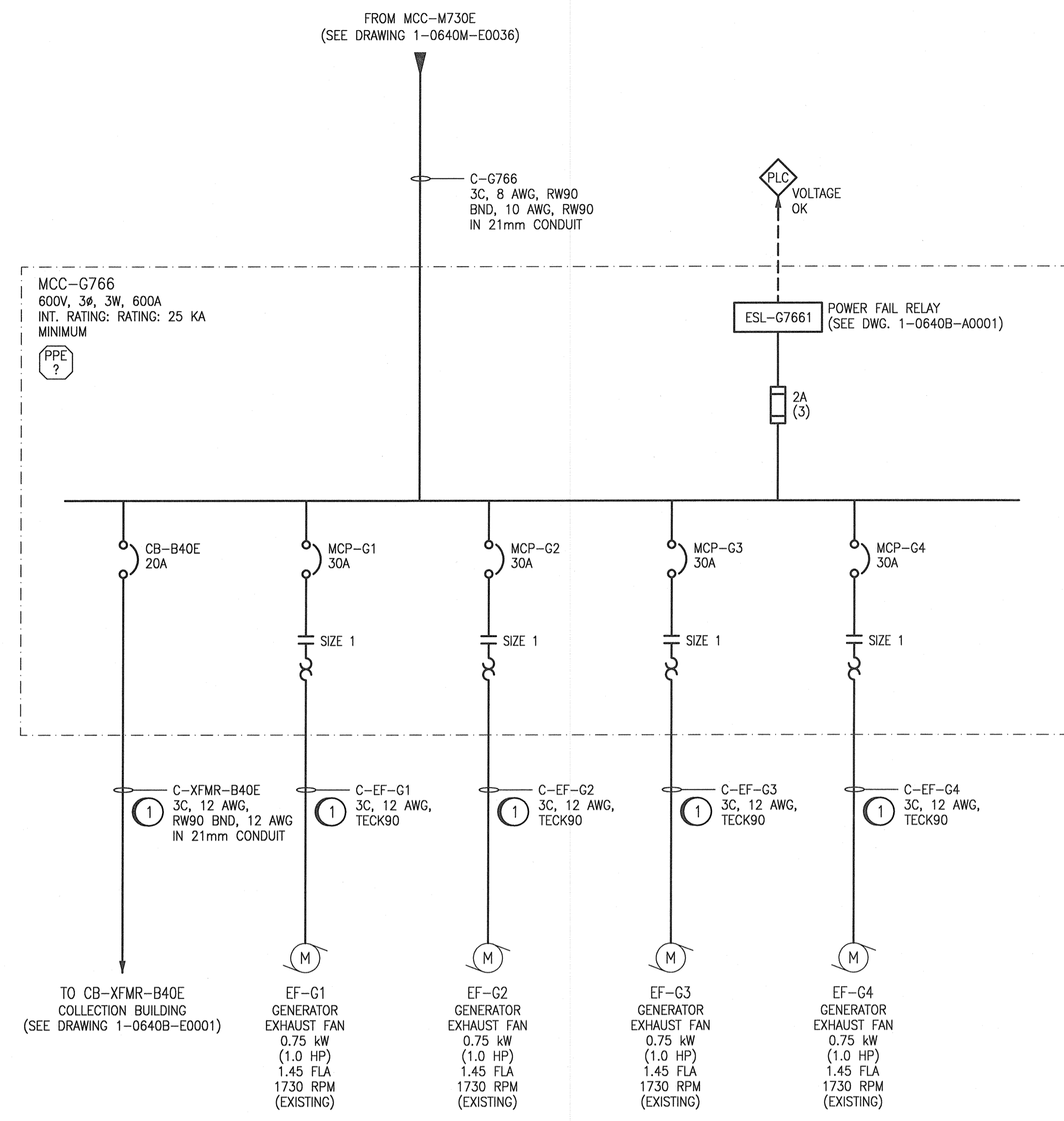


**MCC-G766 ELEVATION**  
SCALE: 1 : 8



**MCC-G766 SINGLE LINE**  
SCALE: NTS

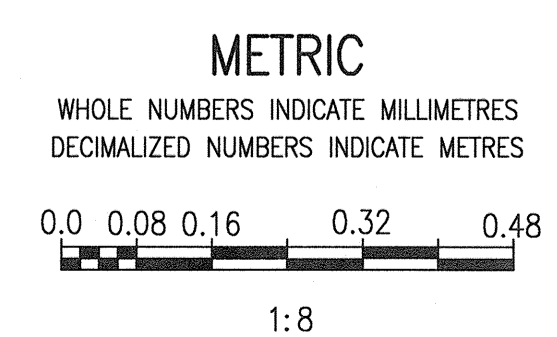
**GENERAL NOTES:**

1. ALL EQUIPMENT AND CABLES ARE NEW UNLESS SPECIFICALLY NOTED OTHERWISE.
2. ALL BREAKERS AND STARTERS TO HAVE AN INTERRUPTING RATING OF 25KAIC OR HIGHER (SERIES RATED EQUIPMENT IS NOT ACCEPTABLE).
3. SET MOTOR CIRCUIT PROTECTORS ACCORDING TO THE CORRESPONDING FLA OF THE FEEDER LOAD.

**CONSTRUCTION NOTES:**

- 1 PROVIDE NEW CABLES TO CONNECT EXISTING EQUIPMENT TO THE NEW MCC-G766. REFER TO 1-0640B-E0009 TO E0012 FOR EXHAUST FAN MOTOR SCHEMATICS.

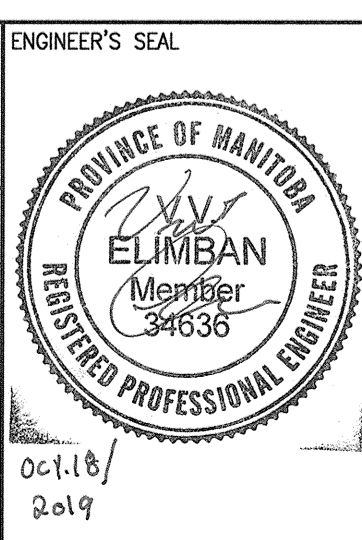
1-0640B-A0001	LOOP DIAGRAM MCC-G766 VOLTAGE PRESENT
1-0640M-E0036	SINGLE LINE DIAGRAM, MCC-M730E
1-0640B-E0013	CONNECTION DIAGRAM, LOAD BANK LDB-G767
1-0640B-E0012	MOTOR STARTER SCHEMATIC, EF-G4 EXHAUST FAN
1-0640B-E0011	MOTOR STARTER SCHEMATIC, EF-G3 EXHAUST FAN
1-0640B-E0010	MOTOR STARTER SCHEMATIC, EF-G2 EXHAUST FAN
1-0640B-E0009	MOTOR STARTER SCHEMATIC, EF-G1 EXHAUST FAN
1-0640B-E0008	ELECTRICAL EQUIPMENT PLAN GENERATOR ROOM AND LOAD BANK LDB-G767
1-0640B-E0001	ELECTRICAL SINGLE LINE DIAGRAM COLLECTION BUILDING
DRAWING NUMBER	REFERENCE DRAWINGS



00	ISSUED FOR TENDER AND CONSTRUCTION	2019/10/18	BS	KS
NO.	REVISIONS	DATE	DESIGN	CHECK

**SNC-LAVALIN INC.**  
148 Nature Park Way  
Winnipeg, MB, Canada R3P 0X7  
204-786-8080

DESIGNED BY: S. BOGHOSIAN  
CHECKED BY: K. SAPIAK  
DRAWN BY: J. GRAGASIN  
APPROVED BY: D. BECKER  
SCALE: AS SHOWN  
ISSUED FOR CONSTRUCTION BY: A. WEISS  
DATE: 2019/01/22  
DATE: 2019/10/18



**THE CITY OF WINNIPEG**  
WATER AND WASTE DEPARTMENT

MCPHILLIPS PUMPING STATION  
ELECTRICAL AND HVAC UPGRADES, MCC REPLACEMENT  
MCC ELEVATION AND SINGLE LINE  
GENERATOR ROOM  
MCC-G766

CITY DRAWING NUMBER: 1-0640B-E0006  
SHEET: 001  
REV: 00  
SIZE: A1