

**CONSTRUCTION NOTES:**

- ① REPLACE EXISTING IQ DP-4000 MULTIFUNCTION POWER METER WITH SCHNEIDER ELECTRIC ION9000. REFER TO EQUIPMENT SCHEDULE FOR COMPLETE PART NUMBER. RECONNECT EXISTING CURRENT AND POTENTIAL TRANSFORMER SECONDARY CABLING TO NEW METER TERMINALS AS INDICATED.
- ② PROVIDE NEW 120V POWER CABLING IN CONDUIT TO PNL-M22U.

**EQUIPMENT SCHEDULE**

ITEM	QTY	DESCRIPTION	MFG	MODEL
①	1	POWER METER ION9000	SCHNEIDER ELECTRIC	METSEION92040

**NOTES:**

- 1. THIS DRAWING SUPERCEDES PART OF THE ORIGINAL WESTINGHOUSE SHOP DRAWING 739C329.
- 2. THIS DRAWING IS BASED ON THE ORIGINAL SHOP DRAWING AND VISUAL INSPECTION. ALL WIRING HAS NOT BEEN FIELD VERIFIED. DESIGN RESPONSIBILITY IS LIMITED TO THE MODIFICATIONS SHOWN.
- 3. CLOUDED PORTIONS OF THIS DRAWING INDICATE WORK TO BE COMPLETED. EITHER REMOVALS OR ADDITIONS AS INDICATED. REFER TO DEMOLITION AND CONSTRUCTION NOTES.

1-0640M-E0016	CONTROL SCHEMATIC 4160V MAIN BREAKER
1-0640M-E0002	ELECTRICAL SINGLE LINE DIAGRAM, 4160V DISTRIBUTION
D-2227	LOOP DIAGRAM - 4160V POWER FAILURE

DRAWING NUMBER REFERENCE DRAWINGS



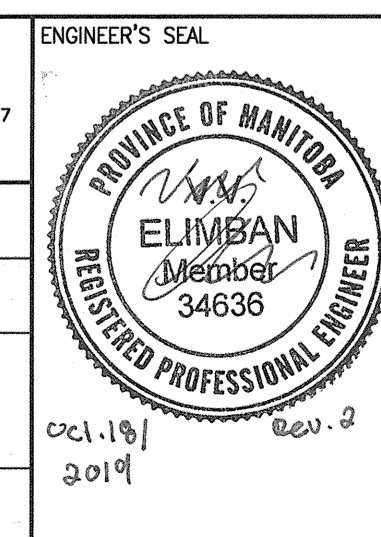
NO.	REVISIONS	DATE	DESIGN	CHECK
02	ISSUED FOR TENDER AND CONSTRUCTION	2019/10/18	VE	KS
01	AS-BUILT - MODIFIED PROTECTION RELAYS	2012/01/10	-	BJC
00	ISSUED FOR TENDER	2009/08/17	BDK	CJR

**SNC-LAVALIN INC.**  
 148 Nature Park Way  
 Winnipeg, MB, Canada R3P 0X7  
 204-786-8080

DESIGNED BY: B. KING  
 CHECKED BY: C. REIMER  
 DRAWN BY: B. KING  
 APPROVED BY: C. REIMER

SCALE: NTS  
 DATE: 2009/08/17  
 ISSUED FOR CONSTRUCTION BY: A. WEISS  
 DATE: 2019/10/18

CONSULTANT NO.: 113099-0000-47DD-0217



**THE CITY OF WINNIPEG**  
 WATER AND WASTE DEPARTMENT

MCPHILLIPS PUMPING STATION

THREE LINE DIAGRAM  
 4160V MAIN BREAKER

CITY DRAWING NUMBER: 1-0640M-E0017  
 SHEET: 001  
 REV: 02  
 SIZE: A1