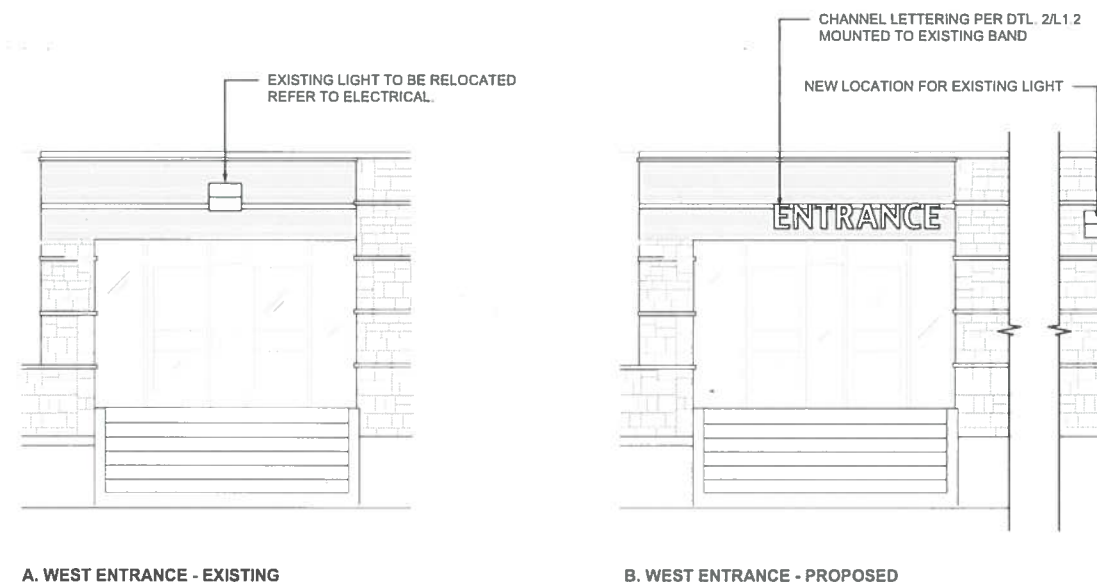


2 EAST ENTRANCE SIGN  
L1.2 SCALE: 1:25



3 WEST ENTRANCE SIGN  
L1.1 SCALE: 1:50

ISSUED FOR ADDENDUM 2	2 DEC 2019
ISSUED FOR TENDER	16 NOV 2019
ISSUED FOR 99% REVIEW	19 JULY 2019
ISSUE NOTES	DATE

PRELIMINARY - NOT FOR CONSTRUCTION

THIS DRAWING MUST NOT BE SCALED  
THE GENERAL CONTRACTOR SHALL VERIFY ALL DIMENSIONS, DATUMS AND LEVELS PRIOR TO COMMENCEMENT OF WORK. ALL ERRORS AND OMISSIONS TO BE REPORTED IMMEDIATELY TO THE LANDSCAPE ARCHITECT.  
VARIATIONS & MODIFICATIONS TO WORK SHOWN ON THESE DRAWINGS SHALL NOT BE CARRIED OUT WITHOUT WRITTEN PERMISSION FROM THE LANDSCAPE ARCHITECT.  
THIS DRAWING IS THE EXCLUSIVE PROPERTY OF THE LANDSCAPE ARCHITECTS AND CAN BE REPRODUCED ONLY WITH THE PERMISSION OF THE LANDSCAPE ARCHITECTS. IN WHICH CASE THE REPRODUCTION MUST BEAR THEIR NAME AS LANDSCAPE ARCHITECTS.

PROFESSIONAL SEALS



PROJECT TITLE  
ST. JAMES - ASSINIBOIA  
CENTENNIAL POOL  
WAYFINDING PHASE I  
644 PARKDALE ST., WINNIPEG, MANITOBA

CHECK TITLE  
BUILDING ENTRANCE SIGNS

DRAWN	REVIEWED	DRAWING NO.
MB		L1.2
SCALE	PROJECT No.	
AS NOTED	18-069	R-1
DATE PRINTED		
7:50 AM Mon, Dec 2, 2019		