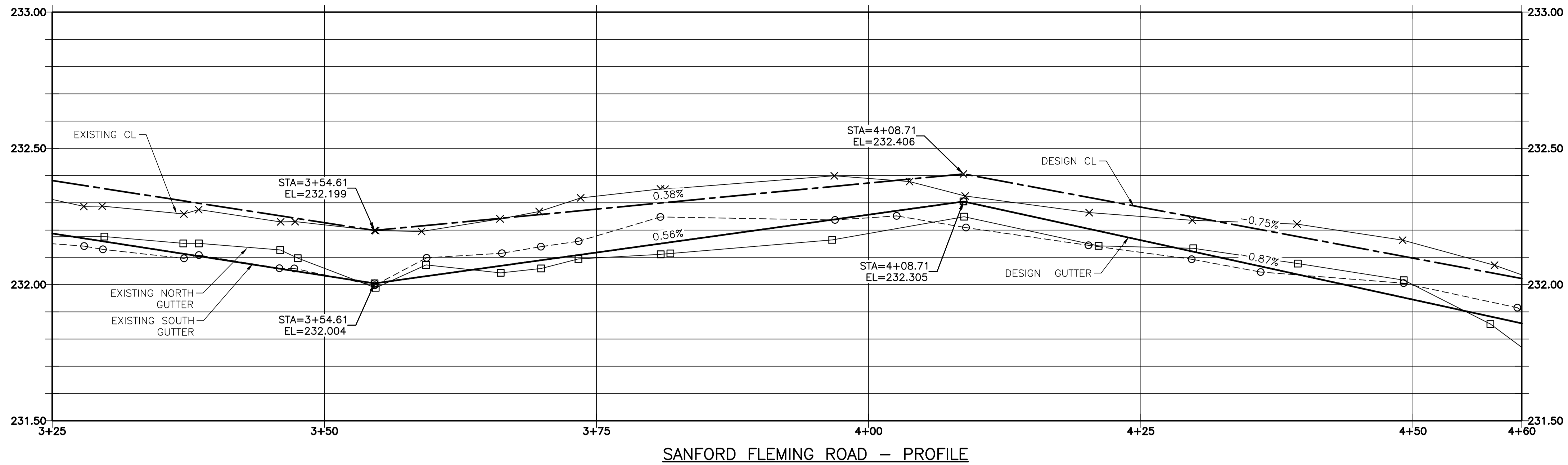


2019-05-08

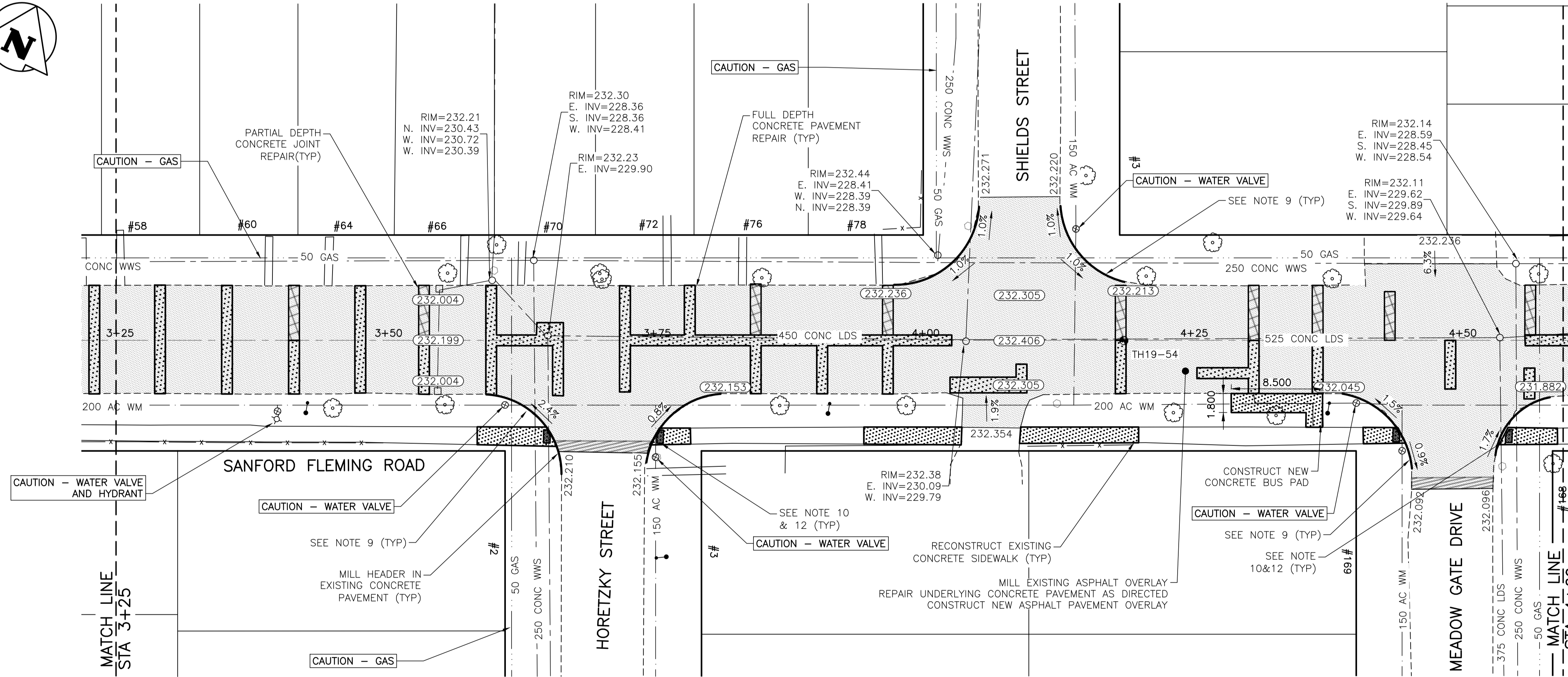
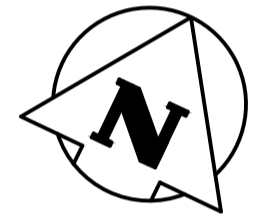
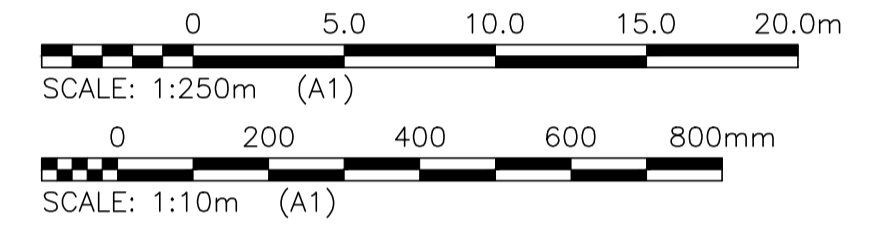
U:\FMS\18-0107-016\18-0107-016\_35 SANFORD FLEMING.DWG  
PLOT 1:1 (A-1)



SANFORD FLEMING ROAD - PROFILE

NOTES:

1. STATION IN CENTRE OF RIGHT-OF-WAY UNLESS OTHERWISE NOTED.
2. EAST PROPERTY LINE OF PLESSIS ROAD IS STA 1+00
3. ALL MEASUREMENTS TO BACK OF CURB.
4. ALL EXISTING TREES TO BE PROTECTED AND MAINTAINED THROUGHOUT CONSTRUCTION UNLESS NOTED OTHERWISE.
5. ALL BUS STOPS WITHIN LIMITS OF CONSTRUCTION TO BE TEMPORARILY RELOCATED BY OTHERS DURING WORKS.
6. HAND OR SOFT DIG METHODS REQUIRED OVER GAS UTILITIES AT INTERVALS DETERMINED BY THE CONTRACT ADMINISTRATOR TO DETERMINE DEPTH OF COVER.
7. NO WORKS, INCLUDING CONCRETE CUTTING OR BREAKING, TO BE UNDERTAKEN NEAR GAS LINES UNTIL DEPTH OF COVER IS DETERMINED AND A MANITOBA HYDRO SAFETY WATCH REPRESENTATIVE IS ON SITE.
8. NO VIBRATORY COMPACTION PERMITTED WITHIN 1M OF GAS MAINS.
9. INSTALL MODIFIED BARRIER CURB AT ALL INTERSECTION RADII, ALLEY RADII, AND BULLNOSES.
10. CONSTRUCT NEW MONOLITHIC CURB RAMP (10mm HEIGHT INTEGRAL)
11. ADJUST ALL WATER VALVES, WATER SERVICE VALVES, MANHOLES AND CATCH BASINS TO GRADE.
12. INSTALL DETECTABLE WARNING SURFACE TILE (SD-229AB) AT STREET INTERSECTIONS.
13. MILL EXISTING LIP CURB AND CONSTRUCT NEW BARRIER CURB 150mm REVEAL, DOWELED.
14. CONCRETE REPAIRS SHOWN BASED ON VISUAL INSPECTION PRIOR TO REMOVAL OF ASPHALT OVERLAY. FINAL REPAIR LIMITS AND DIMENSIONS MAY VARY FROM THOSE SHOWN.



SANFORD FLEMING ROAD - PLAN

LOCATIONS OF UNDERGROUND STRUCTURES AS SHOWN ARE BASED ON THE BEST INFORMATION AVAILABLE. BUT NO GUARANTEE IS GIVEN THAT ALL EXISTING UTILITIES ARE SHOWN OR THAT THE GIVEN LOCATIONS ARE EXACT. CONFIRMATION OF THE EXISTENCE AND EXACT LOCATION OF ALL SERVICES MUST BE OBTAINED FROM INDIVIDUAL UTILITIES BEFORE PROCEEDING WITH CONSTRUCTION.

**PROPERTY LIMITS DELINEATION**  
DELINEATION OF PROPERTY LIMITS AS SHOWN ON THIS DWG DOES NOT REPRESENT A "LEGAL SURVEY". KGS GROUP MAKES NO REPRESENTATION OR WARRANTY AS TO THE ACCURACY OF PROPERTY LIMITS DELINEATED ON THIS DWG, NOR ON THE DIMENSIONAL ACCURACY OF DWG FEATURES RELATIVE TO THOSE PROPERTY LIMITS.

**WARNING**  
NOTIFY THE GAS COMPANY OF THE PROPOSED LOCATION OF EXCAVATION. TAKE PRECAUTION TO AVOID DAMAGE TO GAS COMPANY INSTALLATIONS. SEE PROVINCIAL REGULATION 210/72 FOR DETAILS.

**METRIC**  
WHOLE NUMBERS INDICATE MILLIMETRES  
DECIMALIZED NUMBERS INDICATE METRES

**PRELIMINARY**  
NOT TO BE USED FOR CONSTRUCTION

300_LDS	LAND DRAINAGE SEWER	300_LDS	•	TEST HOLE	
250_WWS	WASTE WATER SEWER	250_WWS	—	GUY WIRE	
---	GAS	---	—	LIGHT STANDARD	
---	HYDRO	---	---	BACK OF CURB	
---	M.T.S.	---	---	PARTIAL DEPTH PATCH	
150_WM	WATERMAIN	150_WM	---	CONCRETE	
⊕	HYDRANT	⊕	---	ASPHALT	
⊗	VALVE	⊗	---	SIDEWALK	
○	MANHOLE	○	---	PROPERTY LINE	
□	CATCH BASIN	□	---	SURVEY BAR	
▽	CURB INLET	▽	---	GEODETIC BENCHMARK	
•	POLES	•	---	ELEVATION	
---	EXISTING	---	---	PROPOSED	
---	LEGEND-PLAN	---	---	PROPOSED	

LOCATION APPROVED UNDERGROUND STRUCTURES	B.I.M. KGS_BASE ELEV. 249.221	COORDINATE SYSTEM: CGVD28
SUPV. U/G STRUCTURES COMMITTEE	DATE	
NOTE:	LOCATION OF UNDERGROUND STRUCTURES AS SHOWN ARE BASED ON THE BEST INFORMATION AVAILABLE BUT NO GUARANTEE IS GIVEN THAT ALL EXISTING UTILITIES ARE SHOWN OR THAT THE GIVEN LOCATIONS ARE EXACT. CONFIRMATION OF EXISTENCE AND EXACT LOCATION OF ALL SERVICES MUST BE OBTAINED FROM THE INDIVIDUAL UTILITIES BEFORE PROCEEDING WITH CONSTRUCTION.	

NO.	REVISIONS	DATE	BY
C	RE-ISSUED FOR TENDER	19/05/08	
B	ISSUED FOR TENDER	19/05/02	JB
A	ISSUED FOR REVIEW	19/03/05	JB

DESIGNED BY	MH	CHECKED BY	
DRAWN BY	MH	APPROVED BY	
HOR. SCALE:	1:250	RELEASED FOR CONSTRUCTION:	
VERTICAL:	1:10	DATE	2019/01/24

ENGINEER'S SEAL  
CONSULTANT DRAWING NO.  
**C103**

**THE CITY OF WINNIPEG**  
PUBLIC WORKS DEPARTMENT  
ENGINEERING DIVISION

PROJECT TITLE  
**2019 LOCAL STREET PACKAGE**  
**SANFORD FLEMING ROAD**  
PLAN AND PROFILE  
**03+25 TO 04+60**

SHEET 3 OF 21  
COMPUTER FILE NAME  
18-0107-016\_35  
SANFORD FLEMING.DWG  
CITY DRAWING NUMBER