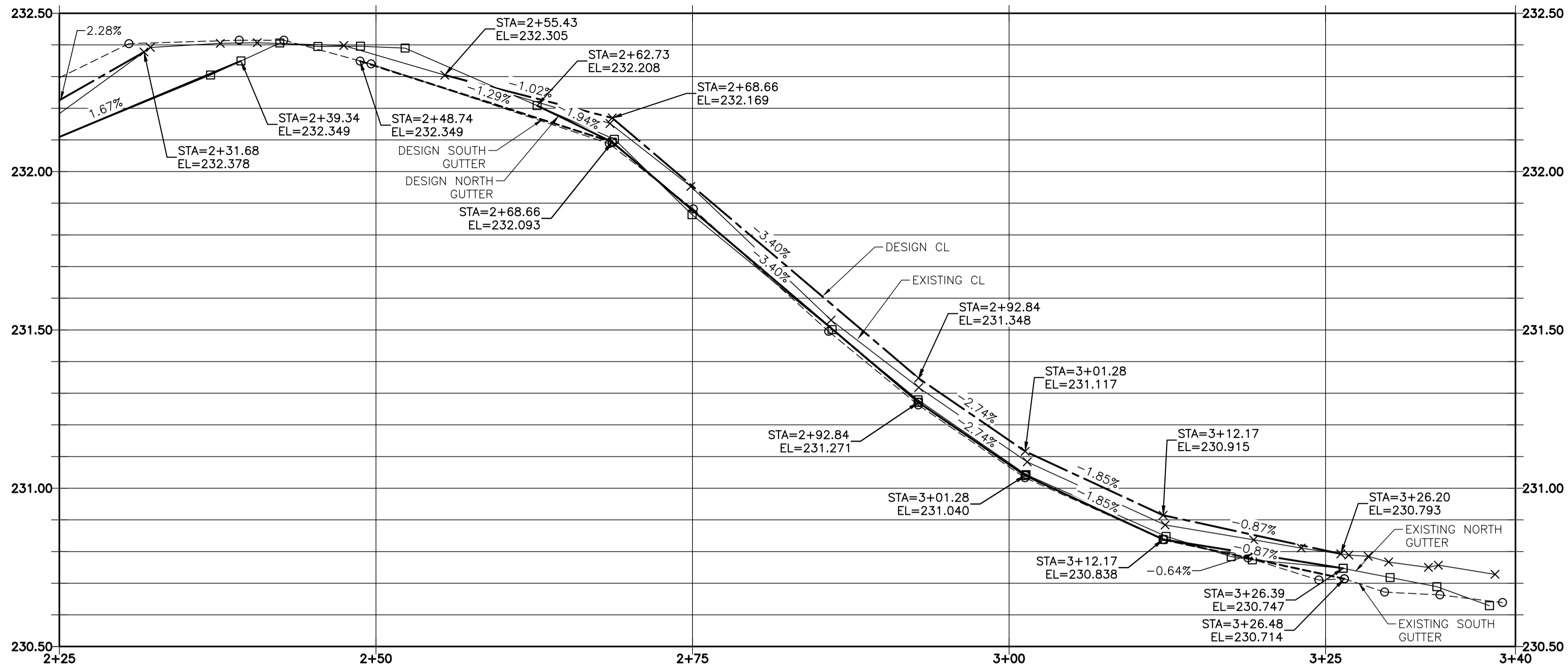
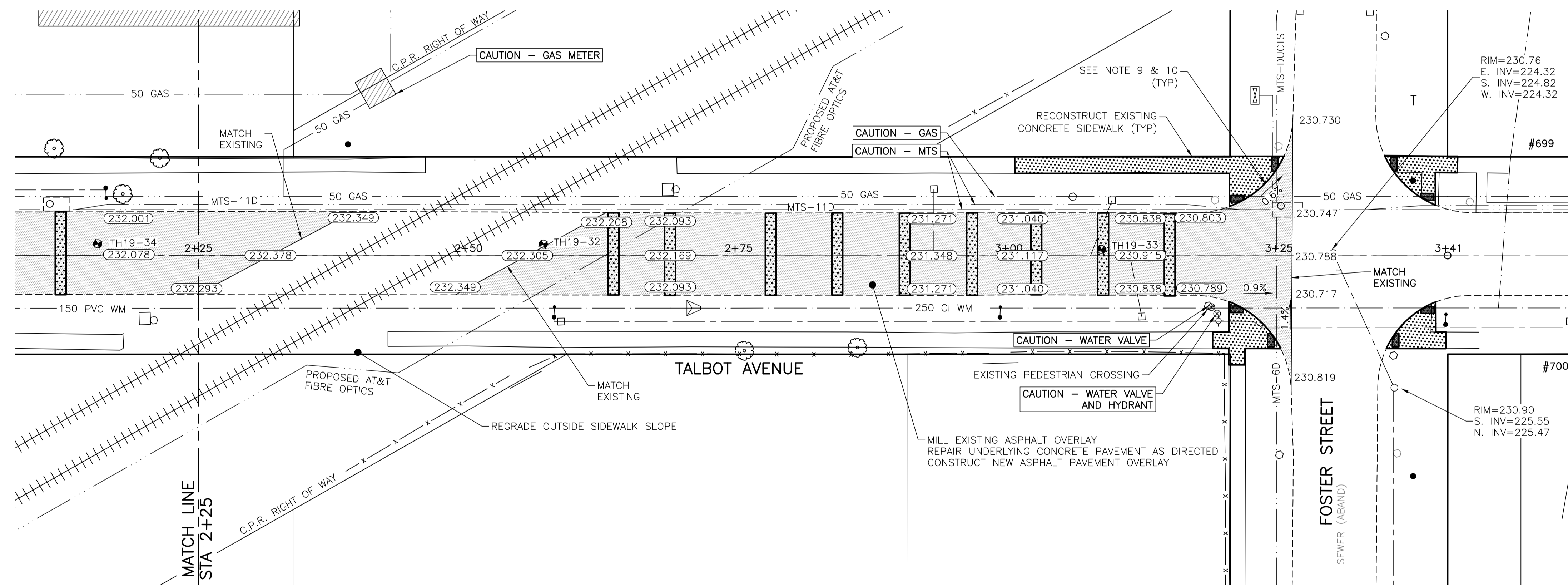
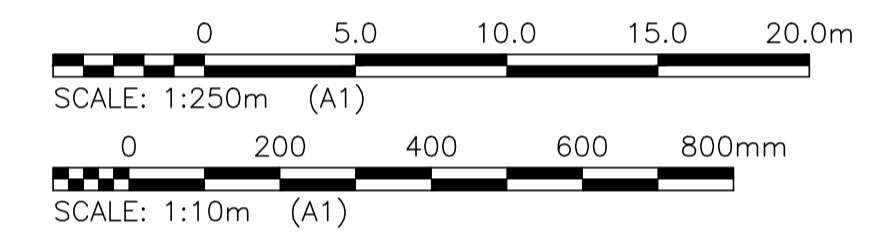


**NOTES:**

1. STATION IN CENTRE OF RIGHT-OF-WAY UNLESS OTHERWISE NOTED.
2. WEST PROPERTY LINE OF GREY STREET IS STA 1+00
3. ALL MEASUREMENTS TO BACK OF CURB.
4. ALL EXISTING TREES TO BE PROTECTED AND MAINTAINED THROUGHOUT CONSTRUCTION UNLESS NOTED OTHERWISE.
5. HAND OR SOFT DIG METHODS REQUIRED OVER GAS UTILITIES AT INTERVALS DETERMINED BY THE CONTRACT ADMINISTRATOR TO DETERMINE DEPTH OF COVER.
6. NO WORKS, INCLUDING CONCRETE CUTTING OR BREAKING, TO BE UNDERTAKEN NEAR GAS LINES UNTIL DEPTH OF COVER IS DETERMINED AND A MANITOBA HYDRO SAFETY WATCH REPRESENTATIVE IS ON SITE.
7. NO VIBRATORY COMPACTION PERMITTED WITHIN 1.0M OF GAS MAINS. ADJUST ALL WATER VALVES, MANHOLES AND CATCH BASINS TO GRADE.
8. INSTALL MODIFIED BARRIER CURB AT ALL INTERSECTION RADII, ALLEY RADII, AND BULLNOSES.
9. CONSTRUCT NEW MONOLITHIC CURB RAMP (10mm HEIGHT INTEGRAL)
10. INSTALL DETECTABLE WARNING SURFACE TILE AT STREET INTERSECTIONS.
11. CONCRETE REPAIRS SHOWN BASED ON VISUAL INSPECTION PRIOR TO REMOVAL OF ASPHALT OVERLAY. FINAL REPAIR LIMITS AND DIMENSIONS MAY VARY FROM THOSE SHOWN.
12. ADJUST ALL WATER VALVES, WATER SERVICE VALVES, MANHOLES AND CATCH BASINS TO GRADE.
13. WATER DISTRIBUTION SYSTEM IN THIS AREA IS CATHODICALLY PROTECTED. ANY DAMAGE TO THIS SYSTEM MUST BE REPORTED TO WATER AND WASTE DEPARTMENT IMMEDIATELY AND ALL COST, MATERIAL AND LABOUR ASSOCIATED WITH THE RESTORATION OF THIS SYSTEM WILL BE THE RESPONSIBILITY OF THE CONTRACTOR.



TALBOT AVENUE - PROFILE



TALBOT AVENUE - PLAN

LOCATIONS OF UNDERGROUND STRUCTURES AS SHOWN ARE BASED ON THE BEST INFORMATION AVAILABLE. BUT NO GUARANTEE IS GIVEN THAT ALL EXISTING UTILITIES ARE SHOWN OR THAT THE GIVEN LOCATIONS ARE EXACT. CONFIRMATION OF THE EXISTENCE AND EXACT LOCATION OF ALL SERVICES MUST BE OBTAINED FROM INDIVIDUAL UTILITIES BEFORE PROCEEDING WITH CONSTRUCTION.

**PROPERTY LIMITS DELINEATION**  
DELINEATION OF PROPERTY LIMITS AS SHOWN ON THIS DWG DOES NOT REPRESENT A "LEGAL SURVEY". KGS GROUP MAKES NO REPRESENTATION OR WARRANTY AS TO THE ACCURACY OF PROPERTY LIMITS DELINEATED ON THIS DWG, NOR ON THE DIMENSIONAL ACCURACY OF DWG FEATURES RELATIVE TO THOSE PROPERTY LIMITS.

**WARNING**  
NOTIFY THE GAS COMPANY OF THE PROPOSED LOCATION OF EXCAVATION.  
TAKE PRECAUTION TO AVOID DAMAGE TO GAS COMPANY INSTALLATIONS.  
SEE PROVINCIAL REGULATION 210/72 FOR DETAILS.

**METRIC**  
WHOLE NUMBERS INDICATE MILLIMETRES  
DECIMALIZED NUMBERS INDICATE METRES

**PRELIMINARY**  
NOT TO BE USED FOR CONSTRUCTION

2019-05-08

U:\FMS\18-0107-016\18-0107-016\_35 TALBOT.DWG  
PLOT 1:1 (A-1)

300 LBS	LAND DRAINAGE SEWER	300 LBS							
250 WWS	WASTE WATER SEWER	250 WWS							
	GAS								
	HYDRO								
	M.T.S.								
150 WM	WATERMAIN	150 WM							
	HYDRANT								
	VALVE								
	MANHOLE								
	CATCH BASIN								
	CURB INLET								
	POLES								
EXISTING	LEGEND-PLAN	PROPOSED	EXISTING	LEGEND-PLAN	PROPOSED	EXISTING	LEGEND-PROFILE	PROPOSED	

**LOCATION APPROVED UNDERGROUND STRUCTURES**

SUPV. U/G STRUCTURES COMMITTEE DATE

**NOTE:**  
LOCATION OF UNDERGROUND STRUCTURES AS SHOWN ARE BASED ON THE BEST INFORMATION AVAILABLE BUT NO GUARANTEE IS GIVEN THAT ALL EXISTING UTILITIES ARE SHOWN OR THAT THE GIVEN LOCATIONS ARE EXACT. CONFIRMATION OF EXISTENCE AND EXACT LOCATION OF ALL SERVICES MUST BE OBTAINED FROM THE INDIVIDUAL UTILITIES BEFORE PROCEEDING WITH CONSTRUCTION.

B.M. KGS_BASE	ELEV. 249.221	COORDINATE SYSTEM: COV028
DESIGNED BY	MH	CHECKED BY
DRAWN BY	MH	APPROVED BY
C	RE-ISSUED FOR TENDER	19/05/08
B	ISSUED FOR TENDER	19/05/02 JB
A	ISSUED FOR REVIEW	19/03/05 JB
NO.	REVISIONS	DATE BY DATE

**KGS GROUP CONSULTING ENGINEERS**

DESIGNED BY: MH  
DRAWN BY: MH  
HOR. SCALE: 1:250  
VERTICAL: 1:10  
DATE: 2019/01/24

ENGINEER'S SEAL

CONSULTANT DRAWING NO. **C108**

**THE CITY OF WINNIPEG PUBLIC WORKS DEPARTMENT ENGINEERING DIVISION**

PROJECT TITLE: **2019 LOCAL STREETS PACKAGE**

SHEET 8 OF 21

COMPUTER FILE NAME: 18-0107-016\_35 TALBOT.DWG

CITY DRAWING NUMBER: -

**TALBOT AVENUE**

**PLAN AND PROFILE 02+25 TO 03+40**