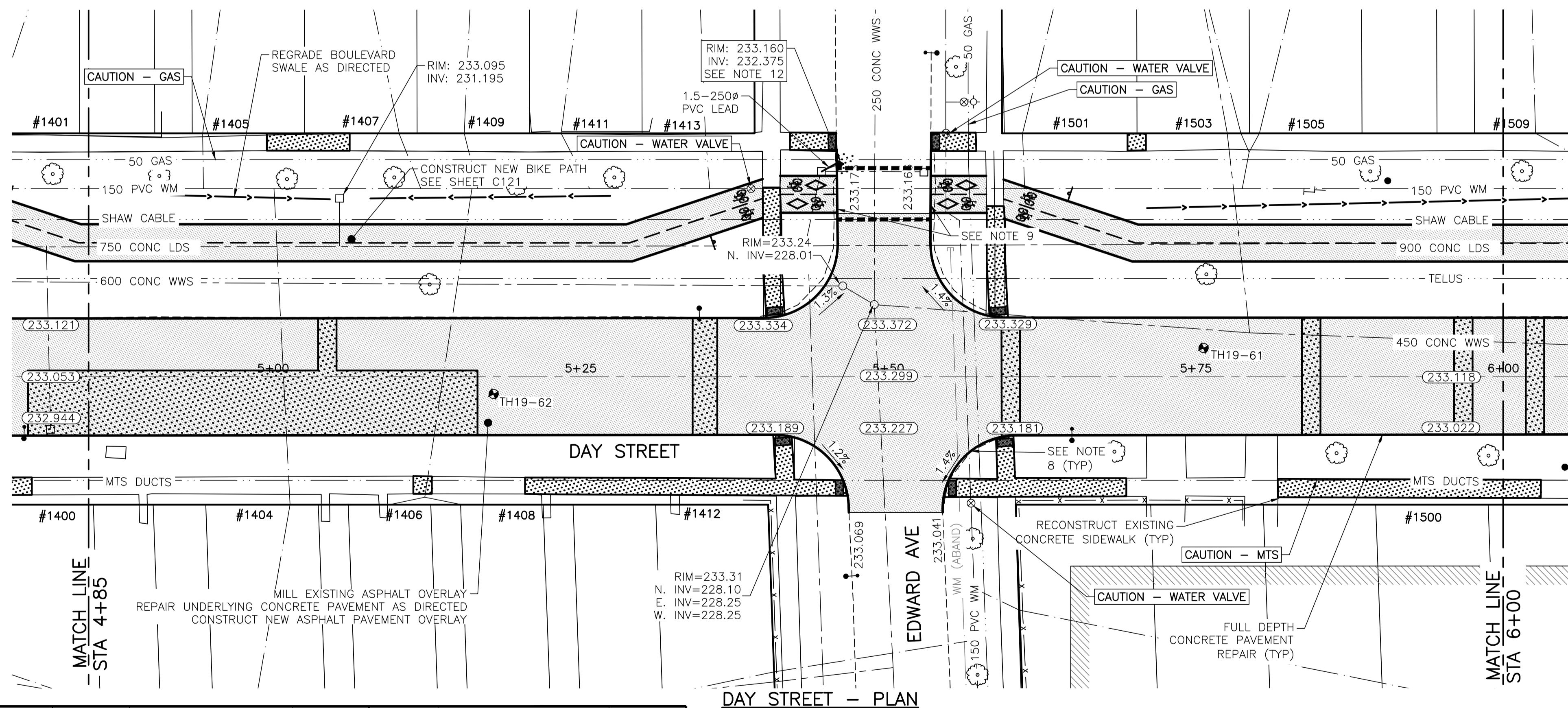
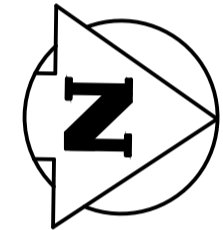
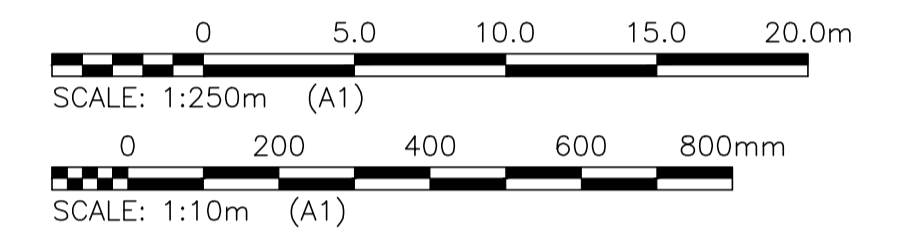
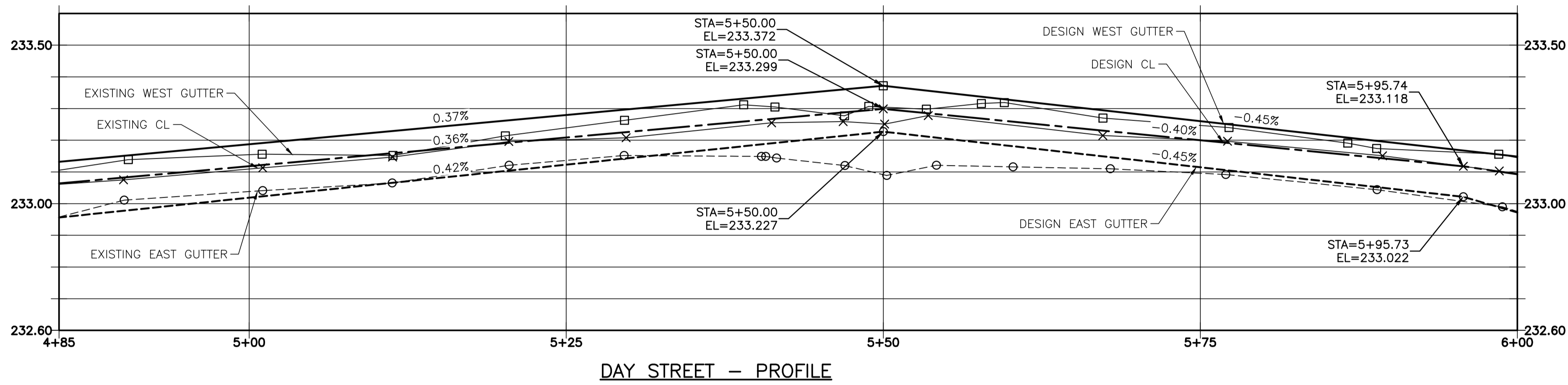
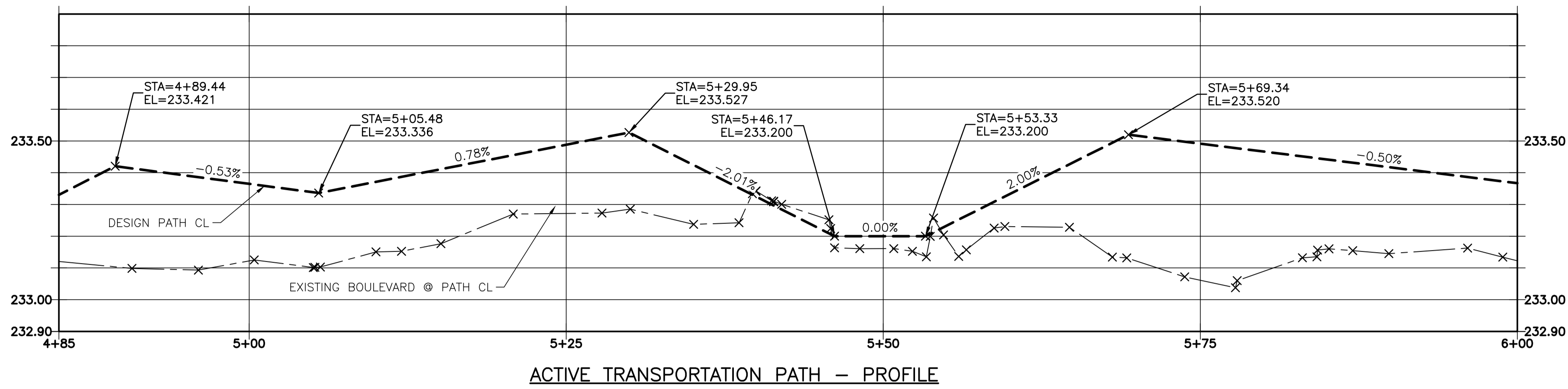


2019-05-08

U:\FMS\18-0107-016\18-0107-016_35 DAY.DWG
PLOT 1:1 (A-1)

NOTES:

1. STATION IN CENTRE OF RIGHT-OF-WAY UNLESS OTHERWISE NOTED.
2. SOUTH PROPERTY LINE OF KILDARE AVENUE IS STA 1+00
3. ALL MEASUREMENTS TO BACK OF CURB.
4. ALL EXISTING TREES TO BE PROTECTED AND MAINTAINED THROUGHOUT CONSTRUCTION UNLESS NOTED OTHERWISE.
5. HAND OR SOFT DIG METHODS REQUIRED OVER GAS UTILITIES AT INTERVALS DETERMINED BY THE CONTRACT ADMINISTRATOR TO DETERMINE DEPTH OF COVER.
6. NO WORKS, INCLUDING CONCRETE CUTTING OR BREAKING, TO BE UNDERTAKEN NEAR GAS LINES UNTIL DEPTH OF COVER IS DETERMINED AND A MANITOBA HYDRO SAFETY WATCH REPRESENTATIVE IS ON SITE.
7. NO VIBRATORY COMPACTION PERMITTED WITHIN 1.0M OF GAS MAINS.
8. INSTALL MODIFIED BARRIER CURB AT ALL INTERSECTION RADII, ALLEY RADII, AND BULLNOSES.
9. CONSTRUCT NEW MONOLITHIC CURB RAMP (10mm HEIGHT INTEGRAL).
10. INSTALL DETECTABLE WARNING SURFACE TILE AT STREET INTERSECTIONS.
11. REMOVE EXISTING CURB AND CONSTRUCT NEW BARRIER CURB 150mm REVEAL, DOWELED.
12. INSTALL CATCH PIT AND BARRIER CURB AND GUTTER INLET FRAME (SD-023). INSTALL NEW 250 LEAD @ 2% MINIMUM GRADE.
13. INSTALL NEW CATCH BASIN AND STANDARD FRAME (SD-024). INSTALL NEW 250 LEAD @ 2% MINIMUM GRADE.
14. CONCRETE REPAIRS SHOWN BASED ON VISUAL INSPECTION PRIOR TO REMOVAL OF ASPHALT OVERLAY. FINAL REPAIR LIMITS AND DIMENSIONS MAY VARY FROM THOSE SHOWN.
15. ADJUST ALL WATER VALVES, WATER SERVICE VALVES, MANHOLES AND CATCH BASINS TO GRADE.



LOCATIONS OF UNDERGROUND STRUCTURES AS SHOWN ARE BASED ON THE BEST INFORMATION AVAILABLE. BUT NO GUARANTEE IS GIVEN THAT ALL EXISTING UTILITIES ARE SHOWN OR THAT THE GIVEN LOCATIONS ARE EXACT. CONFIRMATION OF THE EXISTENCE AND EXACT LOCATION OF ALL SERVICES MUST BE OBTAINED FROM INDIVIDUAL UTILITIES BEFORE PROCEEDING WITH CONSTRUCTION.

PROPERTY LIMITS DELINEATION

DELINEATION OF PROPERTY LIMITS AS SHOWN ON THIS DWG DOES NOT REPRESENT A "LEGAL SURVEY". KGS GROUP MAKES NO REPRESENTATION OR WARRANTY AS TO THE ACCURACY OF PROPERTY LIMITS DELINEATED ON THIS DWG, NOR ON THE DIMENSIONAL ACCURACY OF DWG FEATURES RELATIVE TO THOSE PROPERTY LIMITS.

WARNING

NOTIFY THE GAS COMPANY OF THE PROPOSED LOCATION OF EXCAVATION. TAKE PRECAUTION TO AVOID DAMAGE TO GAS COMPANY INSTALLATIONS. SEE PROVINCIAL REGULATION 210/72 FOR DETAILS.

METRIC

WHOLE NUMBERS INDICATE MILLIMETRES
DECIMALIZED NUMBERS INDICATE METRES

PRELIMINARY
NOT TO BE USED FOR CONSTRUCTION

300 LDS	LAND DRAINAGE SEWER	300 LDS	TEST HOLE			
250 WWS	WASTE WATER SEWER	250 WWS	GUY WIRE			
	GAS		LIGHT STANDARD			
	HYDRO		BACK OF CURB			
	M.T.S.		PARTIAL DEPTH REPAIR			
150 WM	WATERMAIN	150 WM	CONCRETE			
	HYDRANT		ASPHALT			
	VALVE		SIDEWALK			
	MANHOLE		PROPERTY LINE			
	CATCH BASIN		SURVEY BAR			
	CURB INLET		GEODETIC BENCHMARK			
	POLES		ELEVATION			
EXISTING	LEGEND-PLAN	PROPOSED	EXISTING	LEGEND-PROFILE	PROPOSED	

LOCATION APPROVED UNDERGROUND STRUCTURES

SUPV. U/G STRUCTURES COMMITTEE DATE

NOTE: LOCATION OF UNDERGROUND STRUCTURES AS SHOWN ARE BASED ON THE BEST INFORMATION AVAILABLE BUT NO GUARANTEE IS GIVEN THAT ALL EXISTING UTILITIES ARE SHOWN OR THAT THE GIVEN LOCATIONS ARE EXACT. CONFIRMATION OF THE EXISTENCE AND EXACT LOCATION OF ALL SERVICES MUST BE OBTAINED FROM THE INDIVIDUAL UTILITIES BEFORE PROCEEDING WITH CONSTRUCTION.

B.I.M. KGS_BASE	COORDINATE SYSTEM: COV028
ELEV. 249.221	
C	RE-ISSUED FOR TENDER 19/05/08
B	ISSUED FOR TENDER 19/05/02 JB
A	ISSUED FOR REVIEW 19/03/05 JB
NO.	REVISIONS

KGS GROUP CONSULTING ENGINEERS	
DESIGNED BY: MH	CHECKED BY:
DRAWN BY: MH	APPROVED BY:
HOR. SCALE: 1:250	RELEASED FOR CONSTRUCTION:
VERTICAL: 1:10	DATE:
DATE: 2019/01/24	DATE:

ENGINEER'S SEAL

CONSULTANT DRAWING NO. **C119**

THE CITY OF WINNIPEG PUBLIC WORKS DEPARTMENT ENGINEERING DIVISION

2019 LOCAL STREET PACKAGE DAY STREET PLAN AND PROFILE 4+85 TO 6+00

SHEET 19 OF 21

COMPUTER FILE NAME: 18-0107-016_35 DAY.DWG

CITY DRAWING NUMBER: -