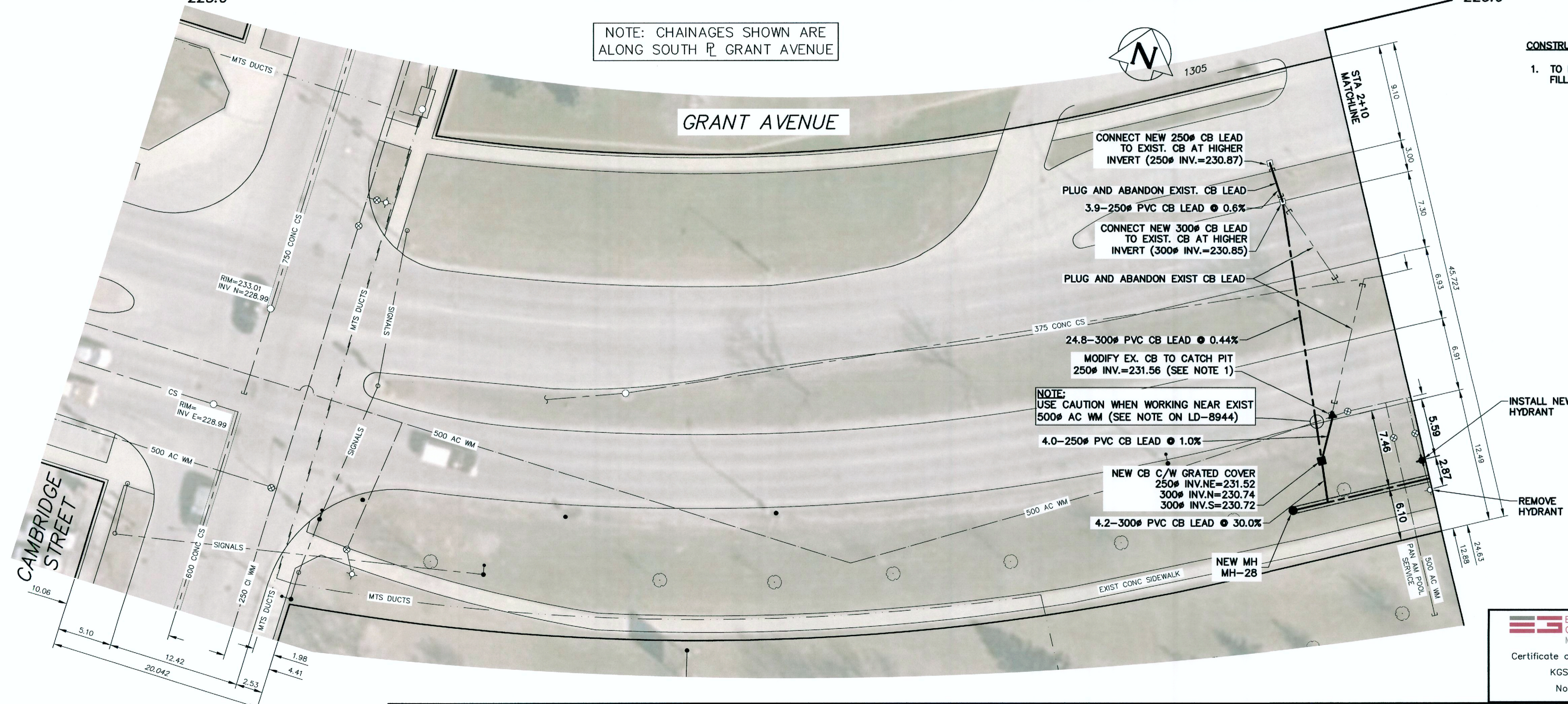


KEY PLAN (WEST)
SCALE: N.T.S.

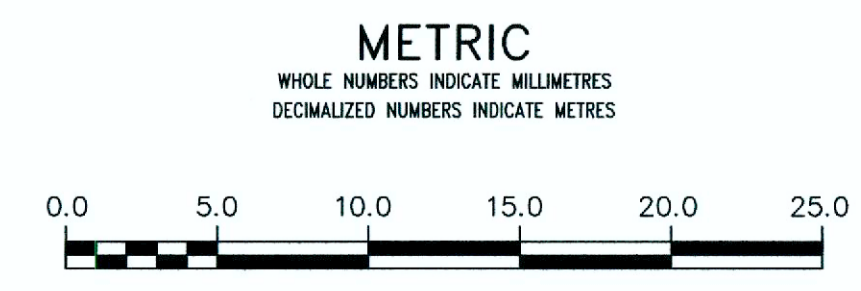
NOTE: CHAINAGES SHOWN ARE ALONG SOUTH \perp GRANT AVENUE

CONSTRUCTION NOTES:

- TO MODIFY EXISTING CATCH BASIN TO CATCH PIT POUR LOW DENSITY CONCRETE (FLOWABLE FILL) TO THE NEW INVERT ELEVATION AND RECONNECT IT TO THE NEW CATCH BASIN.



ENGINEERS GEOSCIENTISTS MANITOBA
Certificate of Authorization
KGS Group
No. 245



WARNING
IF POWER EQUIPMENT OR EXPLOSIVES ARE TO BE USED FOR EXCAVATION ON THIS PROJECT THE CONTRACTOR MUST:
1) NOTIFY THE GAS COMPANY OF THE PROPOSED LOCATION OF EXCAVATION.
2) TAKE PRECAUTION TO AVOID DAMAGE TO GAS COMPANY INSTALLATIONS.
SEE PROVINCIAL REGULATION 210/72 FOR DETAILS

LOCATION APPROVED UNDERGROUND STRUCTURES
SUPV. U/G STRUCTURES COMMITTEE DATE
NOTE:
LOCATION OF UNDERGROUND STRUCTURES AS SHOWN ARE BASED ON THE BEST INFORMATION AVAILABLE BUT NO GUARANTEE IS GIVEN THAT ALL EXISTING UTILITIES ARE SHOWN OR THAT THE GIVEN LOCATIONS ARE EXACT. CONFIRMATION OF EXISTENCE AND EXACT LOCATION OF ALL SERVICES MUST BE OBTAINED FROM THE INDIVIDUAL UTILITIES BEFORE PROCEEDING WITH CONSTRUCTION.

B.M.	ELEV.

KGS GROUP CONSULTING ENGINEERS	
DESIGNED BY: MID	CHECKED BY: JMM
DRAWN BY: GEL	APPROVED BY: RBO
SCALE: HORIZONTAL 1:250 VERTICAL 1:50	RELEASED FOR CONSTRUCTION
DATE: 2019 05 02	DATE:

ENGINEER'S SEAL CONSULTANT DRAWING NUMBER 11-0107-18-C12_LD-8945
--

THE CITY OF WINNIPEG WATER AND WASTE DEPARTMENT ENGINEERING DIVISION
COCKBURN & CALROSSIE SEWER RELIEF WORKS CONTRACT 12
GRANT AVENUE
CAMBRIDGE STREET TO GUELPH STREET
CAMBRIDGE STREET TO STA 2+10

SHEET 3 OF 12
CITY DRAWING NUMBER
LD-8945