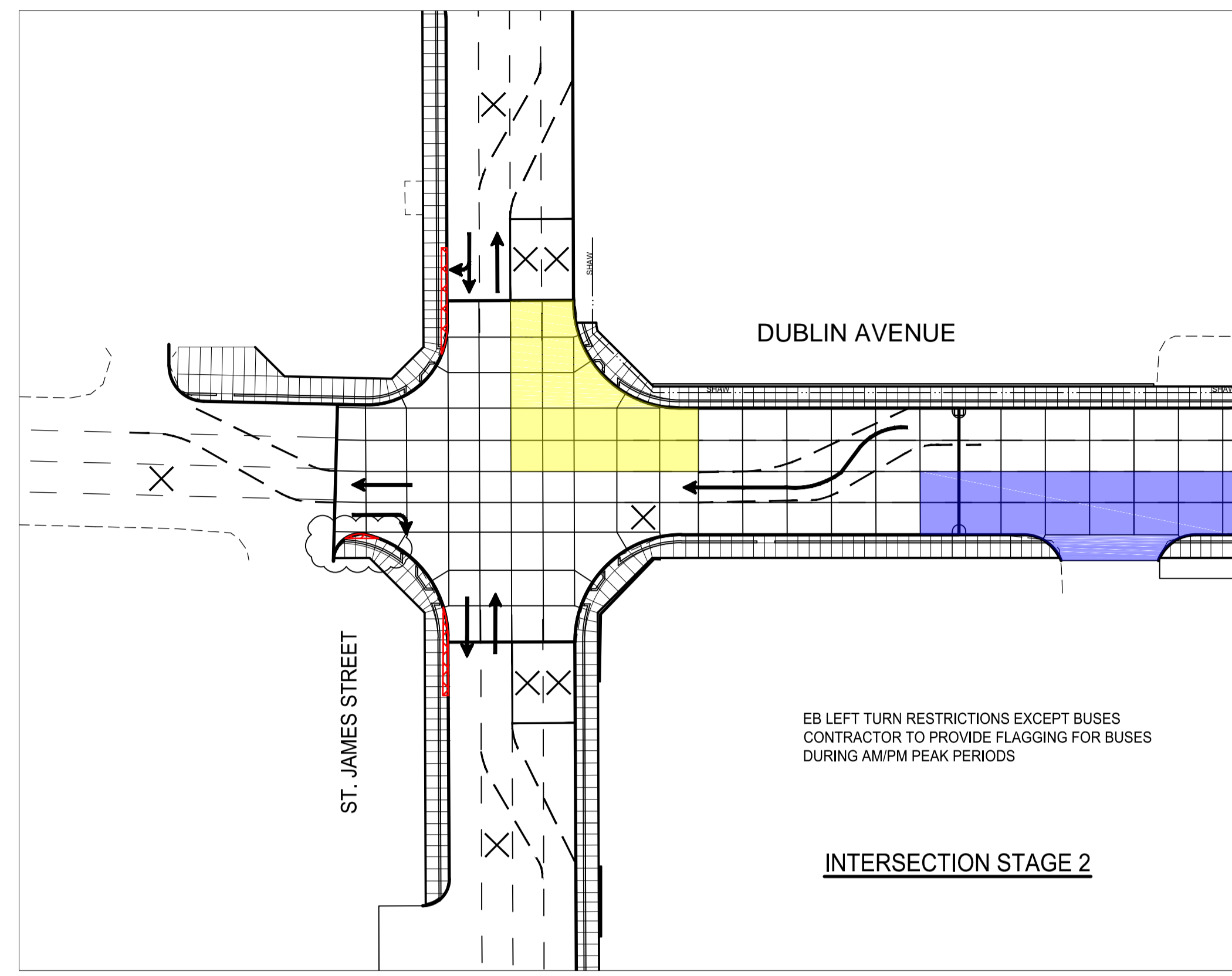
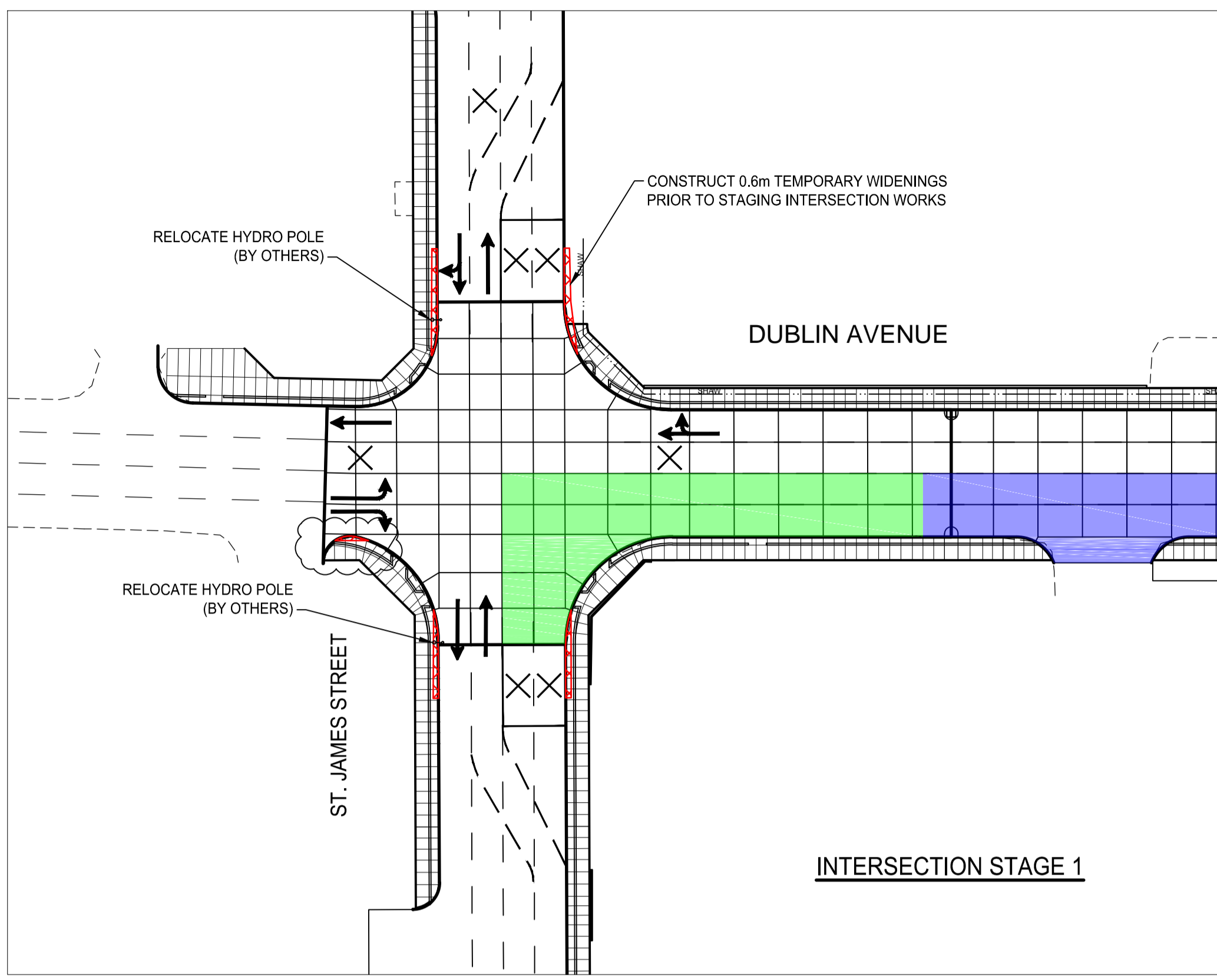
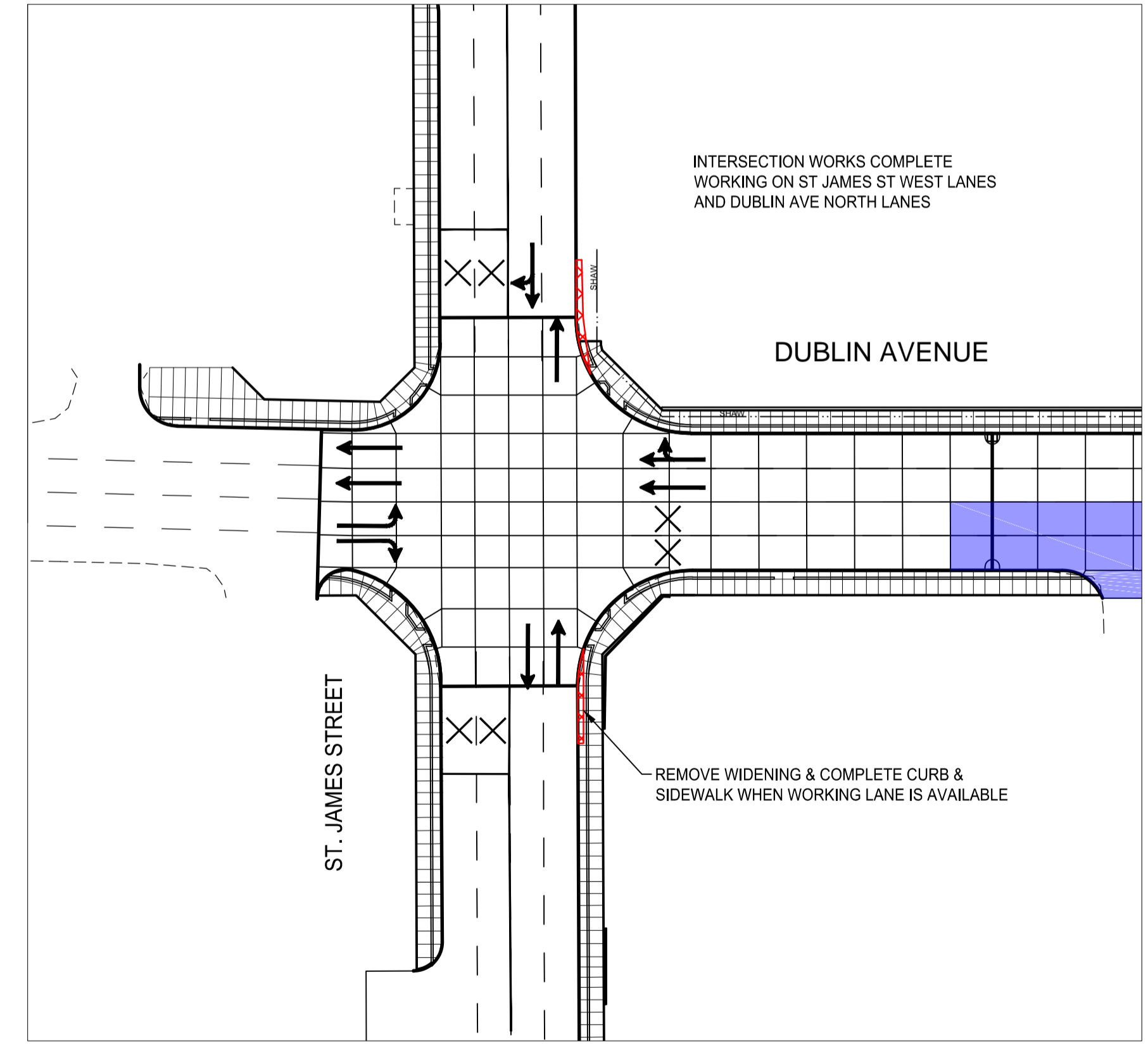
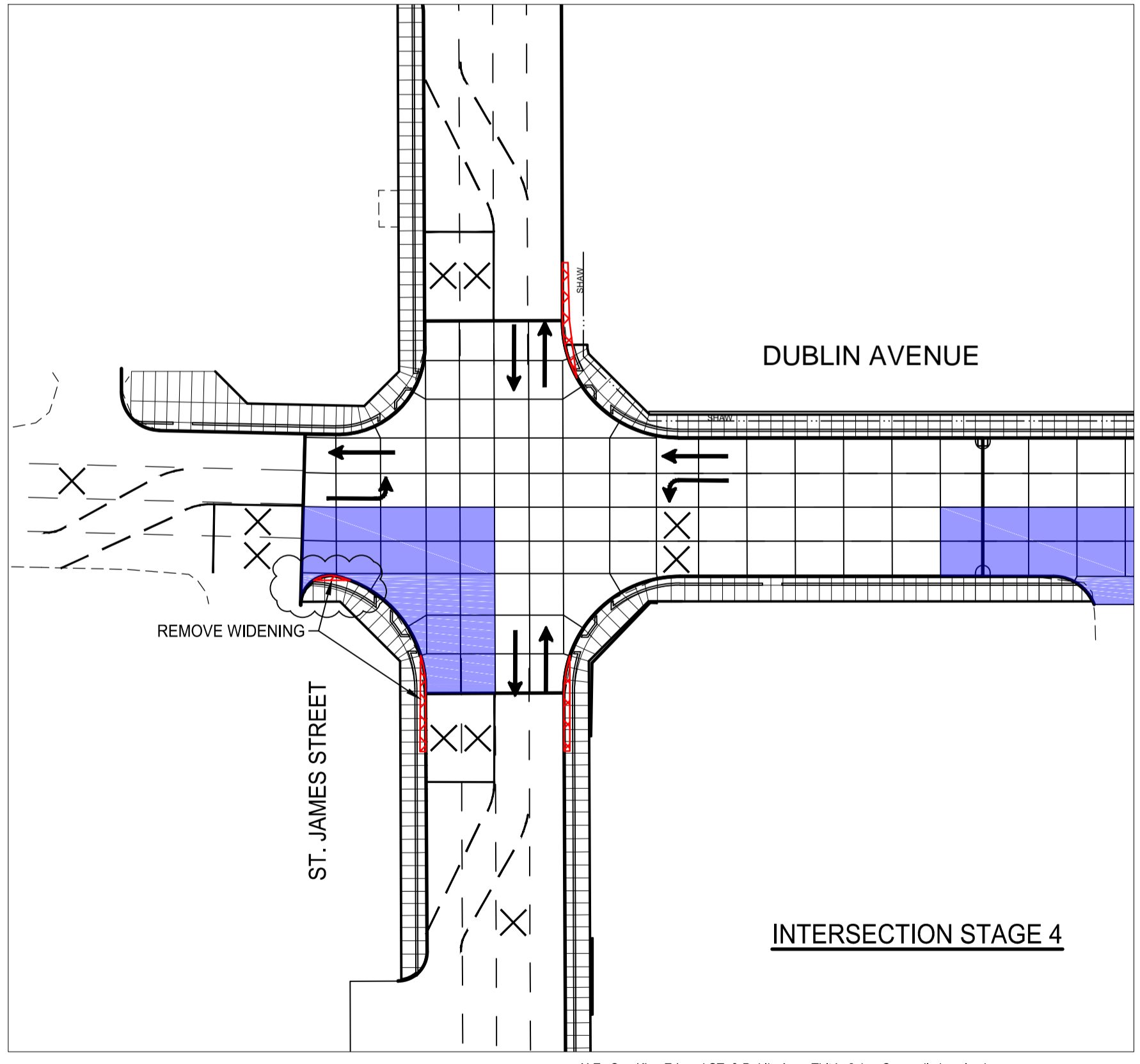
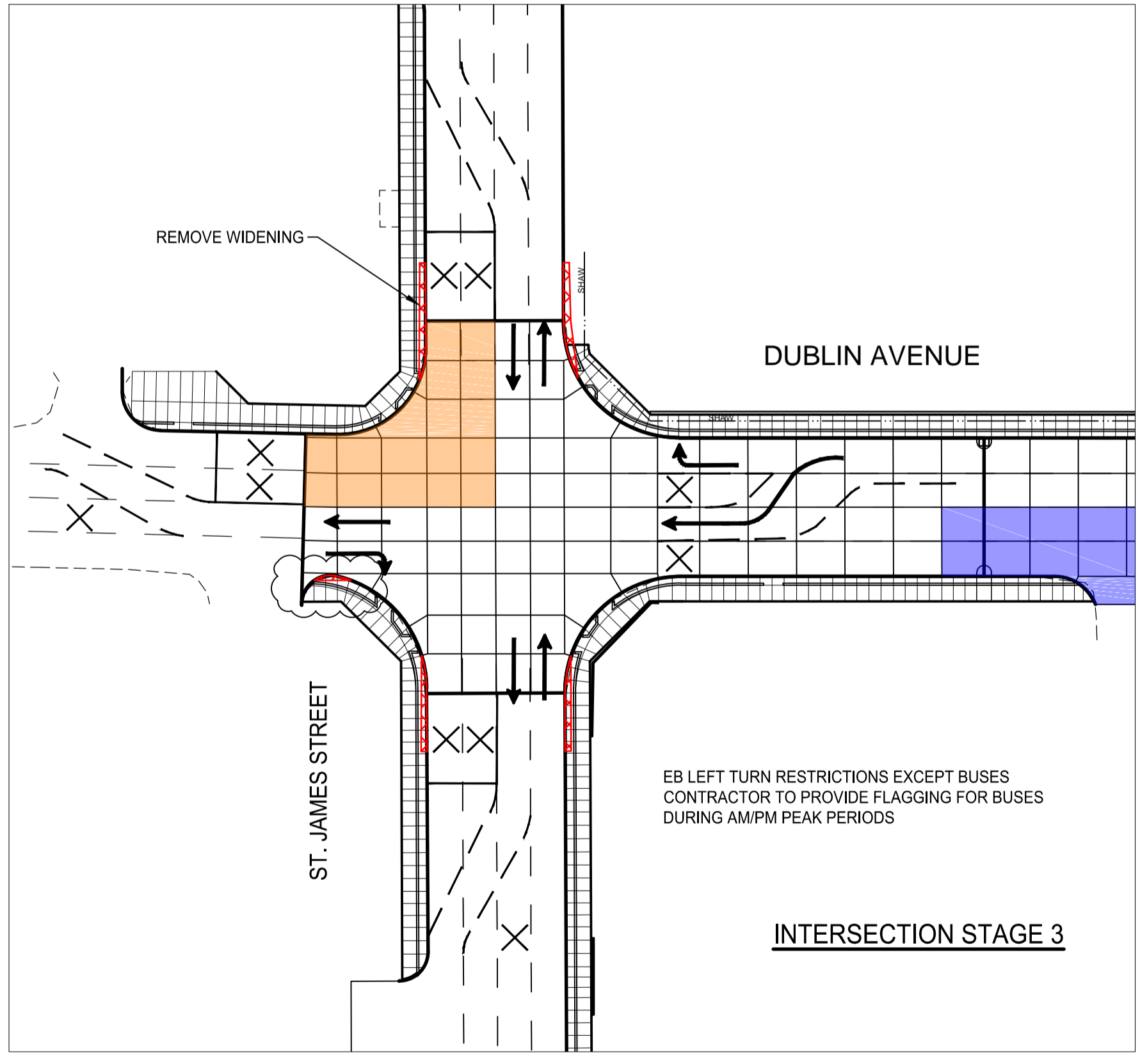


WIDENING DETAIL
75mm ASPHALT PAVEMENT
75mm - 200mm CRUSHED BASE COURSE
300mm - 50mm CRUSHED SUBBASE
GEOTEXTILE



EASTBOUND TRUCKS TO UTILIZE NOTRE DAME AVE OR SASKATCHEWAN AVE FROM KING EDWARD ST AS DETOUR DURING CONSTRUCTION



N.E. Cor. King Edward St. & Dublin Ave., Tilt in 6.1 m Conc. pile in valve box, 31.2m N. of C.L. Pavt. of Dublin Ave. & 10 m E. of C.L. Pavt. of N. bound traffic lane King Edward St. on private property.

U:\1\233340\0300_drawing\0300_drawing.dwg, sheet: 43 of 48, 2019/10/18 2:25 PM by: Kertanason, Melanie

150 WM	WATERMAIN	150 WM	HYDRO	150 WM	WATERMAIN	150 WM	WATERMAIN
+	HYDRANT	+	M.T.S.	+	HYDRANT, VALVE	+	HYDRANT, VALVE
⊗	VALVE	⊗	CONCRETE	⊗	LAND DRAINAGE SEWER	⊗	LAND DRAINAGE SEWER
300 LDS	LAND DRAINAGE SEWER	300 LDS	ASPHALT	300 LDS	WASTE WATER SEWER	300 LDS	WASTE WATER SEWER
250 WWS	WASTE WATER SEWER	250 WWS	SIDEWALK	250 WWS	Q PROFILE	250 WWS	WASTE WATER SEWER
○	MANHOLE	○	MILL JOINT	○	NORTH OR WEST GUTTER	○	NORTH OR WEST GUTTER
□	CATCH BASIN	□	PROPERTY LINE	○	SOUTH OR EAST GUTTER	○	SOUTH OR EAST GUTTER
▽	CURB INLET/CATCH PIT	▽	SURVEY BAR	◇	NORTH OR WEST R	◇	NORTH OR WEST R
▽	TRANSIT STOP	▽	DITCH	○	SOUTH OR EAST R	○	SOUTH OR EAST R
—	CULVERT	—	ELEVATION	△	NORTH OR WEST DITCH	△	NORTH OR WEST DITCH
—	GAS	—	SIDEWALK RAMP	▽	SOUTH OR EAST DITCH	▽	SOUTH OR EAST DITCH
---	EXISTING	---	EXISTING	---	EXISTING	---	EXISTING
---	LEGEND-PLAN	---	LEGEND-PLAN	---	LEGEND-PROFILE	---	LEGEND-PROFILE
---	PROPOSED	---	PROPOSED	---	PROPOSED	---	PROPOSED

LOCATION APPROVED UNDERGROUND STRUCTURES

SUPV. U/G STRUCTURES COMMITTEE DATE

NOTE:
LOCATION OF UNDERGROUND STRUCTURES AS SHOWN ARE BASED ON THE BEST INFORMATION AVAILABLE BUT NO GUARANTEE IS GIVEN THAT ALL EXISTING UTILITIES ARE SHOWN OR THAT THE GIVEN LOCATIONS ARE EXACT. CONFIRMATION OF EXISTENCE AND EXACT LOCATION OF ALL SERVICES MUST BE OBTAINED FROM THE INDIVIDUAL UTILITIES BEFORE PROCEEDING WITH CONSTRUCTION.

B.M.	654528		
ELEV.	234.079m		
NO.	REVISIONS	DATE	BY
1	ADDENDUM	19.10.18	J.M.B.
0	ISSUED FOR TENDER	19.09.18	J.M.B.

Stantec		500 - 311 Portage Avenue, Winnipeg MB Canada www.stantec.com	
DESIGNED BY	T.G.	CHECKED BY	S.R.S.
DRAWN BY	M.K.	APPROVED BY	S.R.S.
HOR. SCALE:	1:500	RELEASED FOR CONSTRUCTION:	
VERTICAL:		DATE	2019.10.18

ENGINEER'S SEAL

TENDER DRAWING

NOT TO BE USED FOR CONSTRUCTION

CONSULTANT DRAWING NO.
C-105

THE CITY OF WINNIPEG
PUBLIC WORKS DEPARTMENT
ENGINEERING DIVISION

DUBLIN AVENUE BRIDGE REPLACEMENT
DUBLIN AVENUE

STAGING & TURNING RESTRICTIONS

SHEET 43 OF 48
CAD FILE DRAWING NUMBER 33340c-105-926.dwg
CITY DRAWING NUMBER P-3503-25