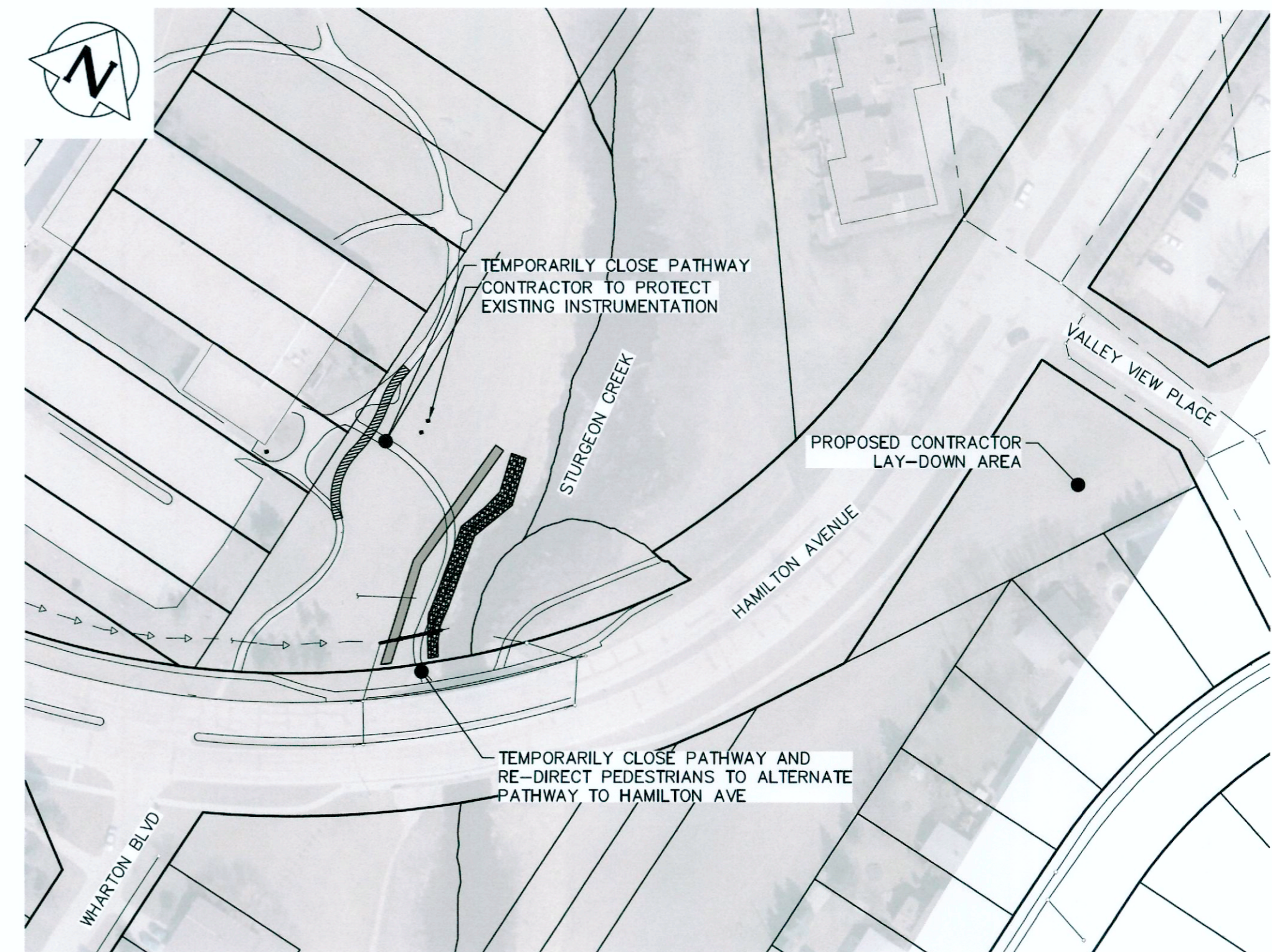
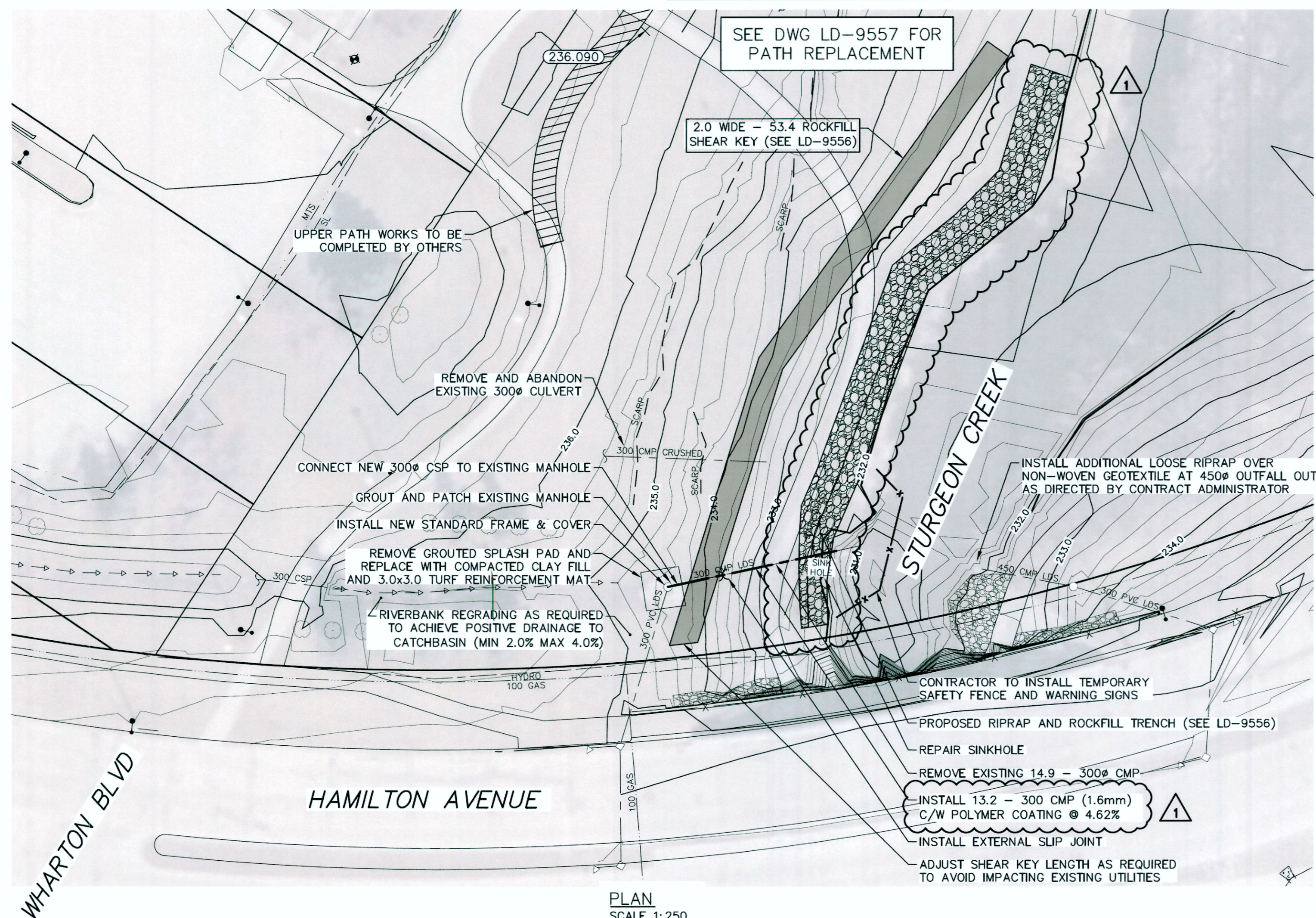


NOTE: CHAINAGES SHOWN ARE ALONG ϕ EXISTING OUTFALLS



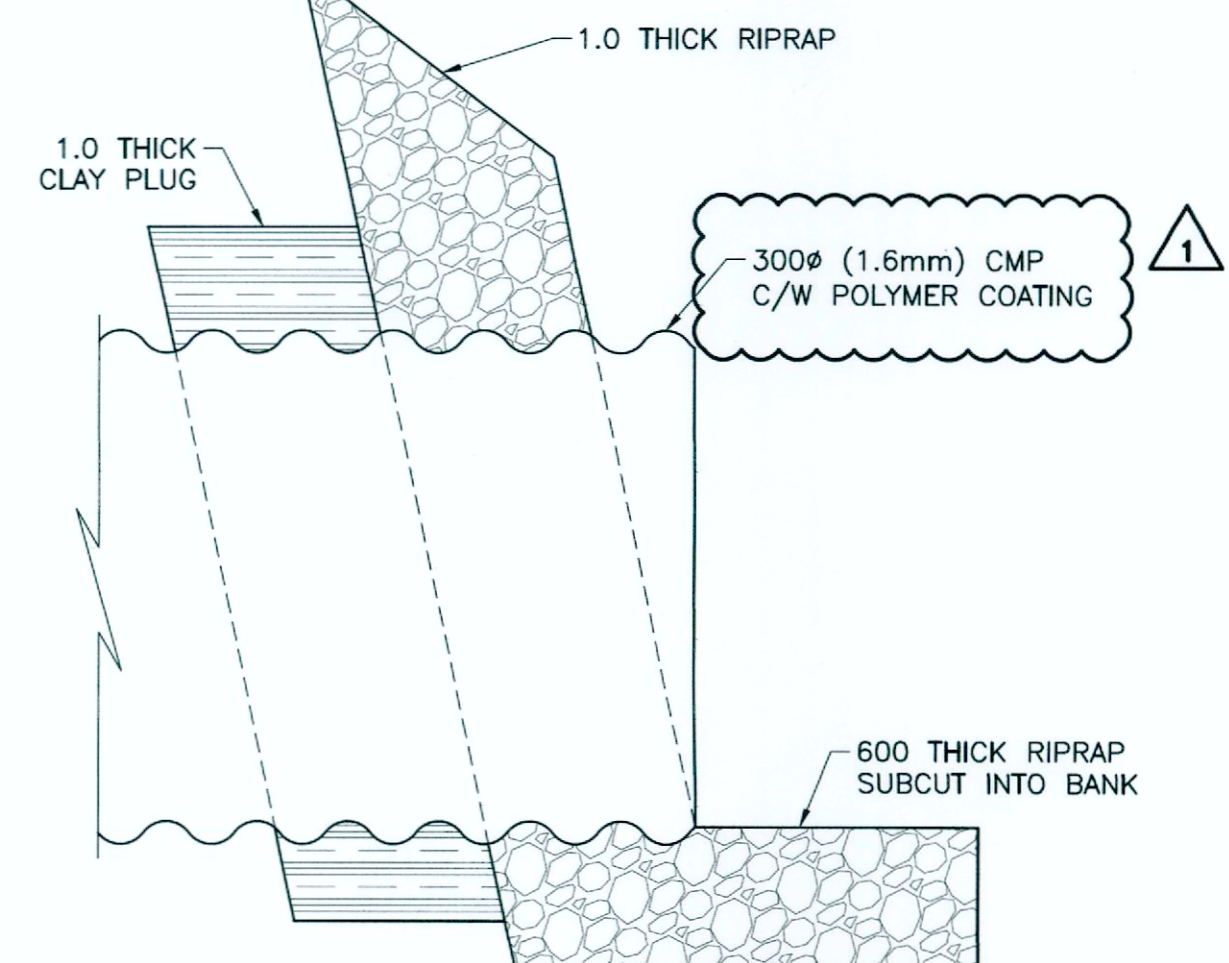
LOCATION PLAN
SCALE NTS



PLAN
SCALE 1:250

NOTES:

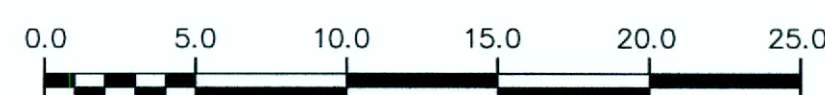
- ALL EXCAVATED MATERIAL WITHIN 76.0 OF THE RSRL MUST BE REMOVED FROM SITE (NO STOCKPILING).
- CONSTRUCT CLAY COFFERDAM AT CREEK AS REQUIRED (SEE DWG LD-9558).
- CMP TO MANHOLE CONNECTION TO USE WS-30 WATER STOP GROUT RING.
- CONTRACTOR TO PROVIDE AND INSTALL PROPER WARNING SIGNS ALONG PEDESTRIAN PATHWAY CONCERNING WORK SITE.
- CONTRACTOR TO PROVIDE ALTERNATE PEDESTRIAN ACCESS TO HAMILTON AVE.
- CONTRACTOR TO PROTECT INSTRUMENTATION THROUGHOUT CONSTRUCTION.



CULVERT END DETAIL
SCALE: NTS

FOR INDEX PAGE
SEE DWG LD-9554

METRIC
WHOLE NUMBERS INDICATE MILLIMETRES
DECIMALIZED NUMBERS INDICATE METRES



WARNING
IF POWER EQUIPMENT OR EXPLOSIVES ARE TO BE USED FOR EXCAVATION ON THIS PROJECT THE CONTRACTOR MUST:
1) NOTIFY THE GAS COMPANY OF THE PROPOSED LOCATION OF EXCAVATION.
2) TAKE PRECAUTION TO AVOID DAMAGE TO GAS COMPANY INSTALLATIONS.
SEE PROVINCIAL REGULATION 21072 FOR DETAILS

LOCATION APPROVED
UNDERGROUND STRUCTURES
SUPV. U/G STRUCTURES COMMITTEE DATE
NOTE:
LOCATION OF UNDERGROUND STRUCTURES AS SHOWN ARE BASED ON THE BEST INFORMATION AVAILABLE BUT NO GUARANTEE IS GIVEN THAT ALL EXISTING UTILITIES ARE SHOWN OR THAT THE GIVEN LOCATIONS ARE EXACT CONFIRMATION OF EXISTENCE AND EXACT LOCATION OF ALL SERVICES MUST BE OBTAINED FROM THE INDIVIDUAL UTILITIES BEFORE PROCEEDING WITH CONSTRUCTION.

B.M.	ELEV.	NO.	REVISIONS	DATE	BY
1			REISSUED FOR TENDER	2019 12 06	RBO
0			ISSUED FOR TENDER	2019 11 26	RBO

KGS GROUP CONSULTING ENGINEERS	
DESIGNED BY: NGV	CHECKED BY: RBO
DRAWN BY: GEL	APPROVED BY:
SCALE: HORIZONTAL 1:250 VERTICAL 1:50	RELEASED FOR CONSTRUCTION
DATE: 2019 12 06	DATE:

ENGINEERS
GEOSCIENTISTS
MANITOBA
Certificate of Authorization
KGS Group
No. 245

ENGINEER'S SEAL
PROVINCE OF MANITOBA
R.B. OFFMAN
Member
24781
REGISTERED PROFESSIONAL ENGINEER
CONSULTANT DRAWING NUMBER
LD-9555

THE CITY OF WINNIPEG
WATER AND WASTE DEPARTMENT
ENGINEERING DIVISION
HAMILTON AVENUE BRIDGE OUTFALLS
RENEWAL AND REHABILITATION
HAMILTON AVENUE BRIDGE OUTFALLS
PLAN AND PROFILE
S-MA70138632 AND S-MA70138633
SHEET 3 OF 6
CITY DRAWING NUMBER
LD-9555