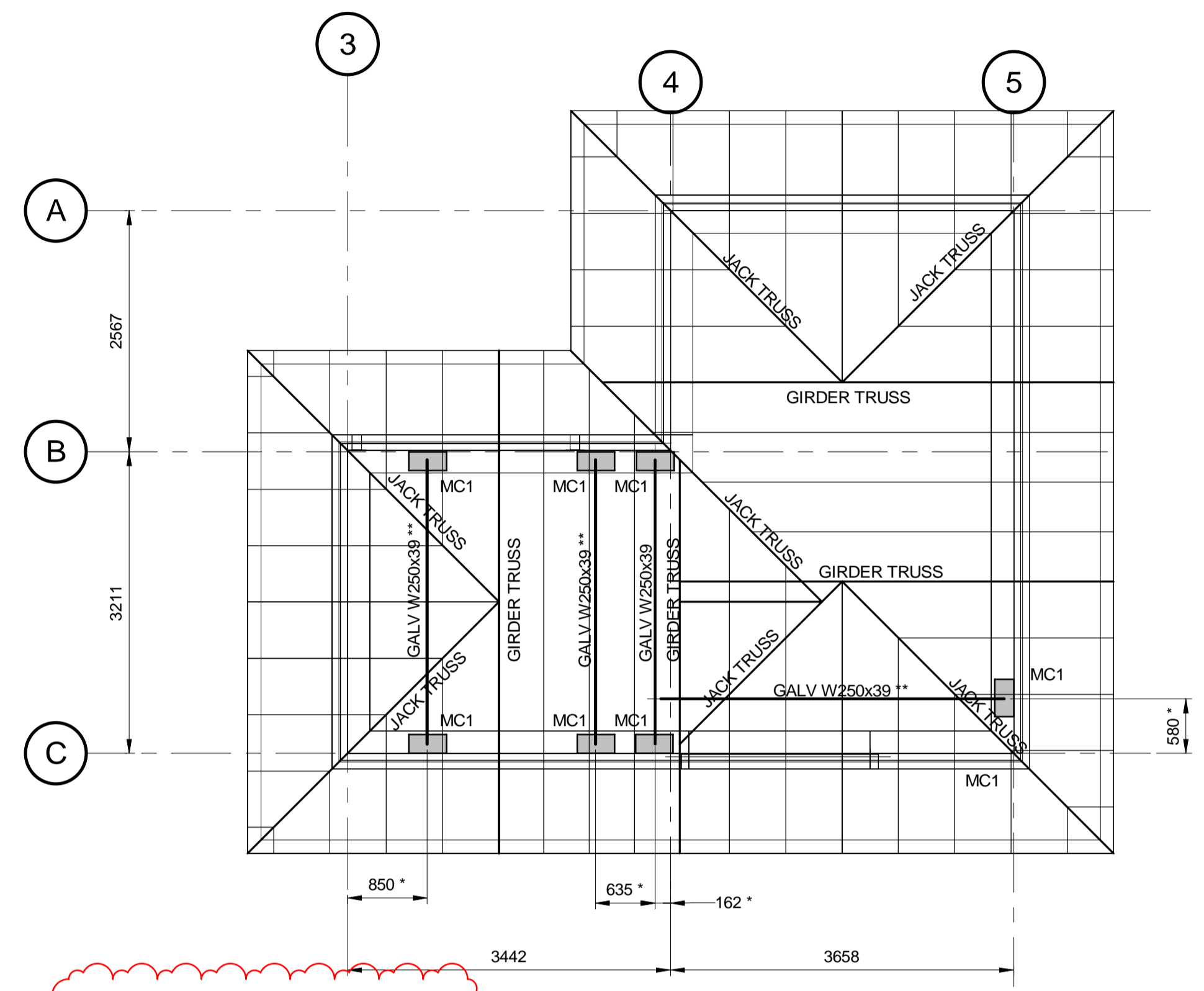


DILLON CONSULTING LIMITED, 3200 DEJEL DRIVE, SUITE 608, WINDSOR, ONTARIO, N9W 5K8, PHONE (519) 948-5000, FAX (519) 948-5064

PLOT DATE: 2019-10-03 11:30:20 AM
FILE NAME: C:\Users\jgdb\Documents\19259-01-WPMM - CON_LBOOK\MUSX.rvt



NOTES:
 * VERIFY DIMENSION TO CENTER BEAM OVER OPENING
 ** HOIST BEAM MARK "1 TON" C/W LOW HEADROOM PROFILE GEAR TROLLEY HOIST MOUNT 1 TON CAPACITY WITH 40 FT. LIFT, 10 FT. HAND CHAIN. (SHB010 OR VULCAN OR APPROVED EQUIVALENT.)

ROOF FRAMING PLAN
 SCALE: 1 : 50

ISSUED FOR ADDENDUM No. 4
 NOT FOR CONSTRUCTION



				ENGINEER'S SEAL		THE CITY OF WINNIPEG WATER AND WASTE DEPARTMENT	
				DESIGNED BY: NR		CHECKED BY: JAA	
DRAWN BY: DJB		APPROVED BY: BLM		CONSULTANT PROJECT NUMBER: 19-9259		SHEET 13 OF 34	
HOR. SCALE: 1 : 50		RELEASED FOR CONSTRUCTION		NEW ROOF PLAN & DETAILS		CONSULTANT DRAWING NUMBER: S-03	
VERTICAL		DATE: SEPTEMBER 2019					
NO. REVISIONS		DATE		BY		DATE	