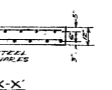
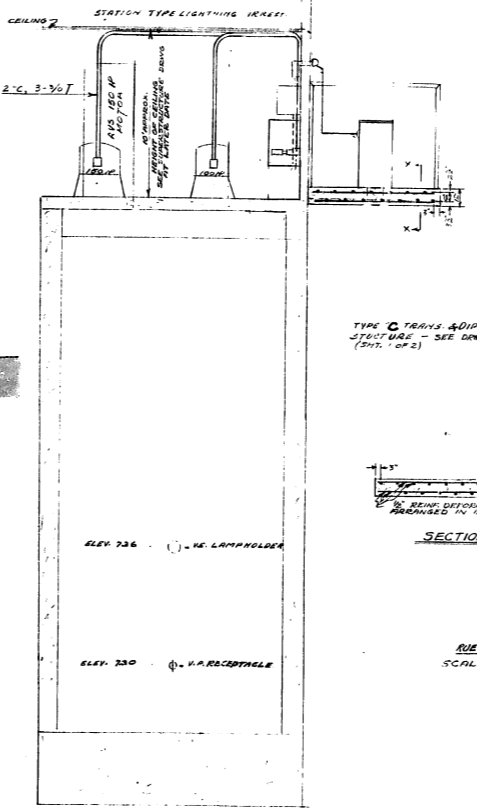
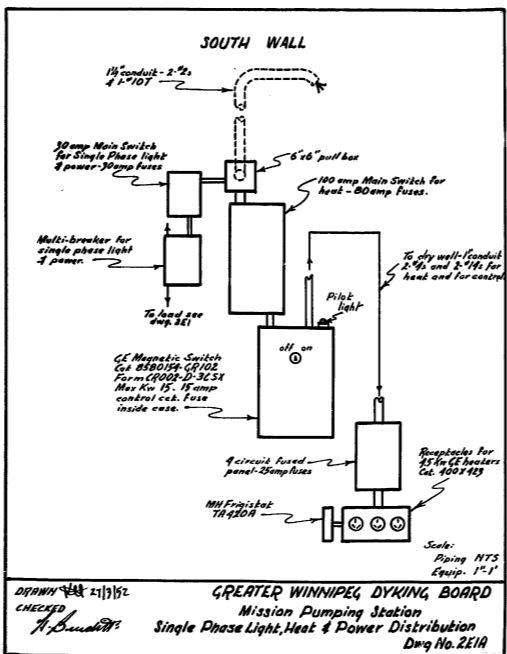
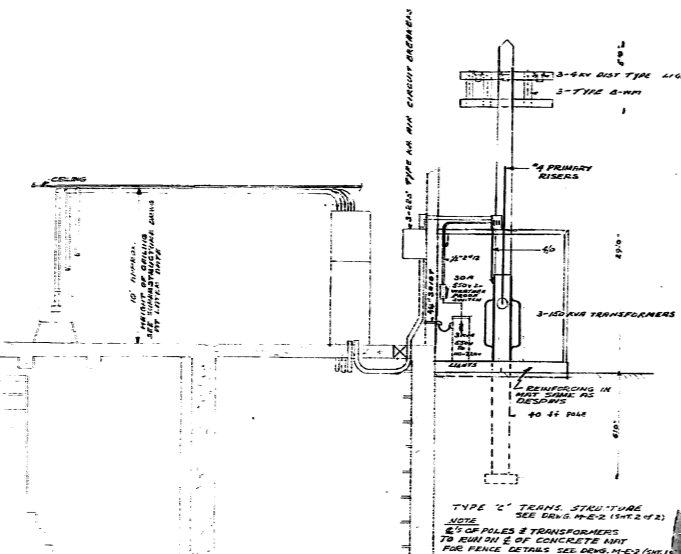
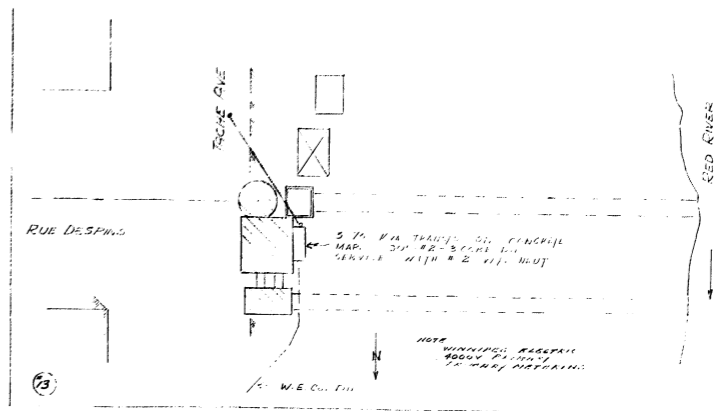
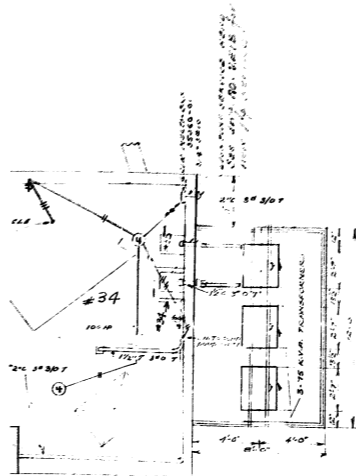
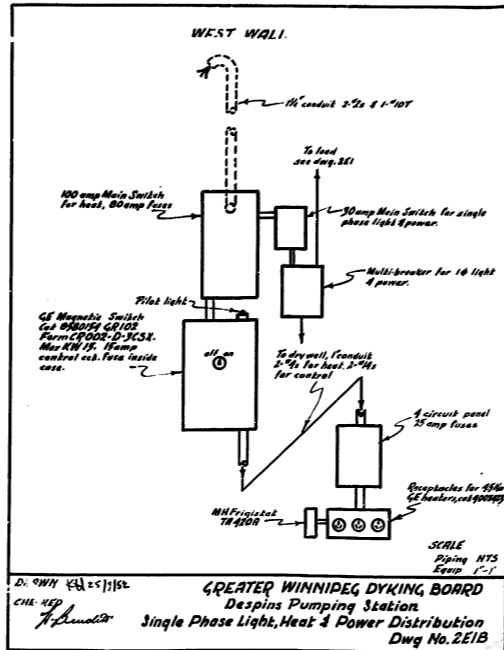
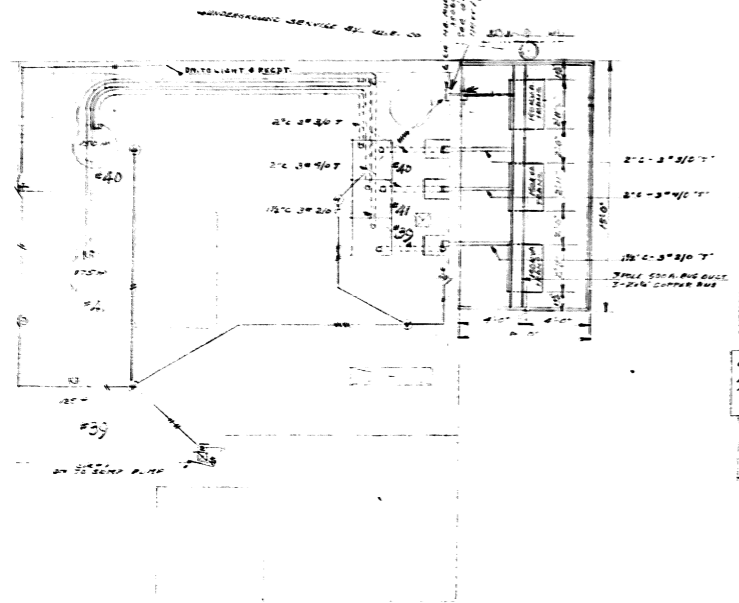


APPENDIX G

MISSION FLOOD PUMP STATION AS-BUILT DRAWINGS



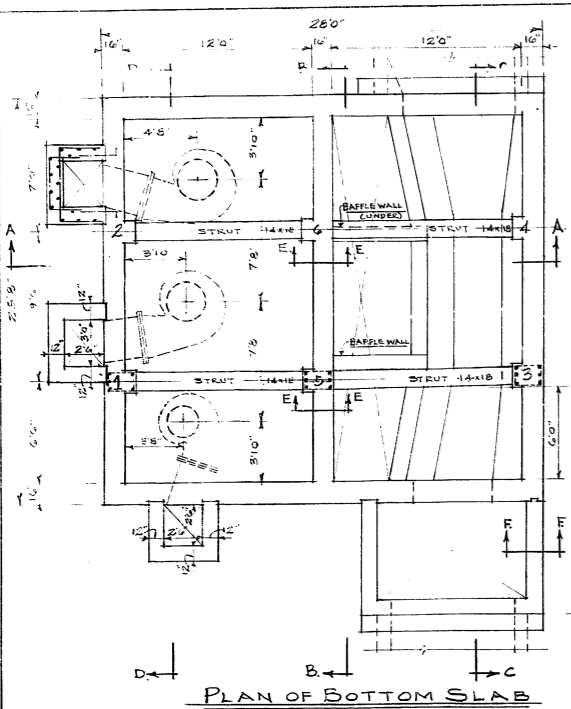
NOTES
LOCATE SWITCH BY ENTRANCE DOORS TO CONTROL H.C. FLOOR LIGHTS

REVISION	DATE	DESCRIPTION	BY	APPROVED
1	2/17/54	SCALE ADDED	CHT	
2	4/1/54	REINFORCING TYPE OF CONCRETE	DN	
3	2/1/54	TRUSS STRUCTURE FOR FOUNDATION	CHT	
4	2/1/54	TRUSS STRUCTURE FOR FOUNDATION	CHT	
5	2/1/54	TRUSS STRUCTURE FOR FOUNDATION	CHT	
6	2/1/54	TRUSS STRUCTURE FOR FOUNDATION	CHT	
7	2/1/54	TRUSS STRUCTURE FOR FOUNDATION	CHT	

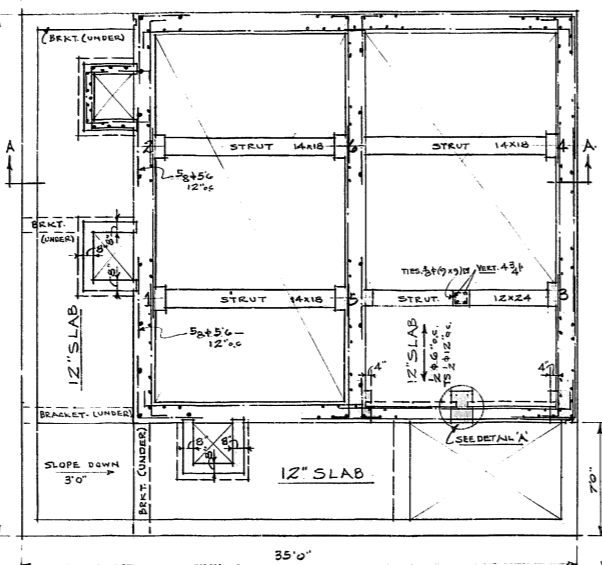
GREATER WINNIPEG DYKING BOARD
221 O. LYNE ST. N. WINNIPEG, MANITOBA

MISSION ST. & RUE DESPINA
PUMPING STATION
ELECTRICAL LAYOUT

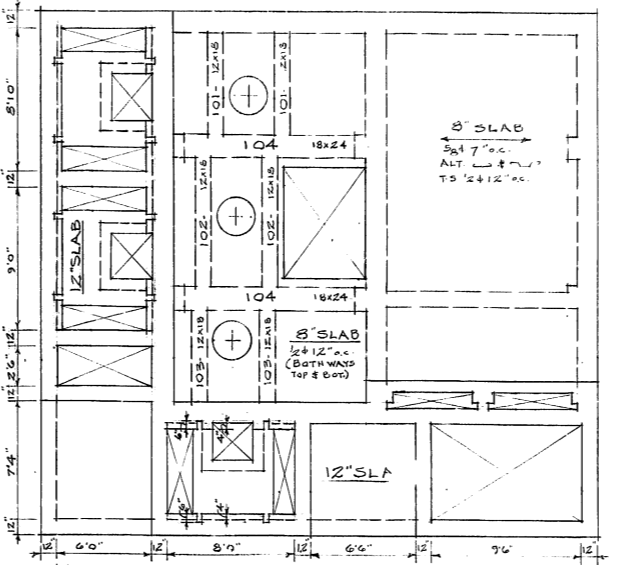
SCALE: _____
DESIGNED BY: _____ DATE: _____
DRAWN BY: _____ DATE: _____
CHECKED BY: _____ DATE: _____
TRACED BY: _____ DATE: _____
APPROVED: _____
DRG. No. 2E1A



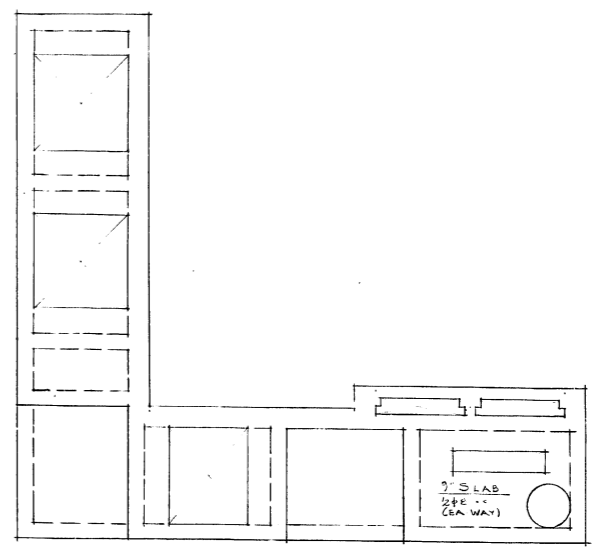
PLAN OF BOTTOM SLAB
1/4" SCALE.



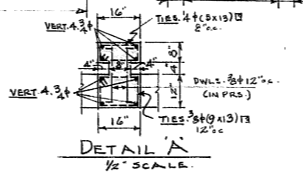
PLAN AT SECTION 1-1
1/4" SCALE.



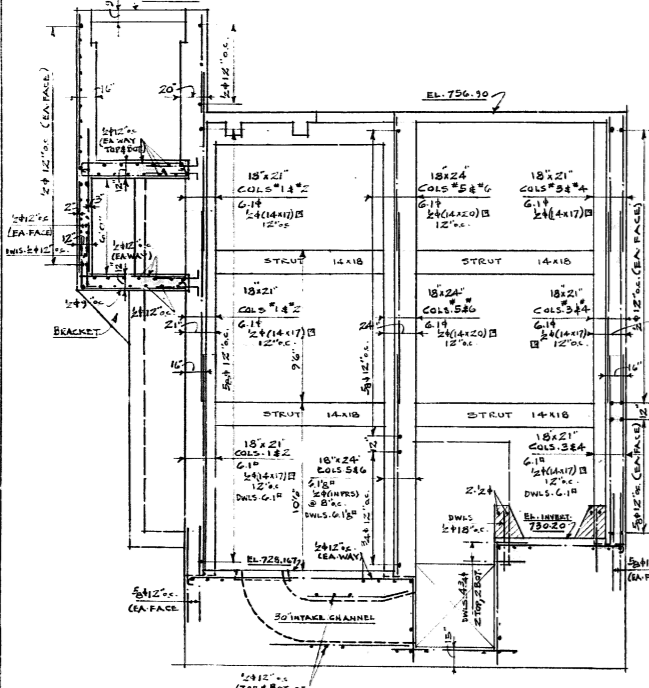
PLAN OF PUMP FLOOR SLAB
1/4" SCALE.



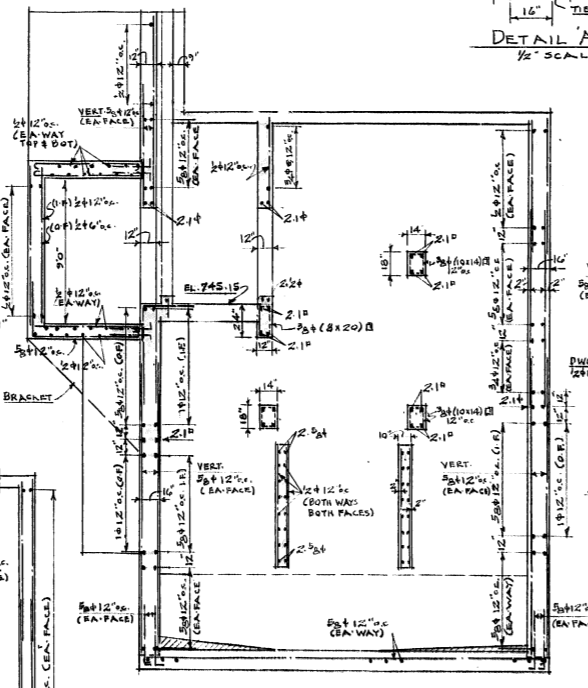
PLAN AT TOP OF DISCHARGE CHAMBER
1/4" SCALE.



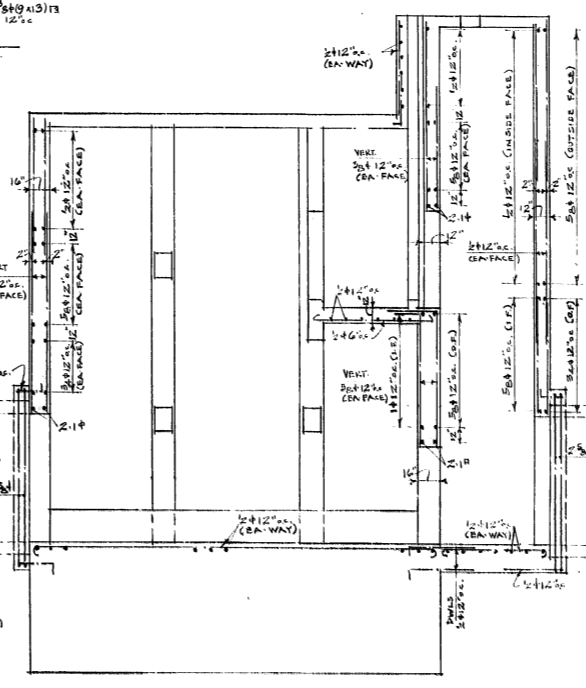
DETAIL A
1/4" SCALE.



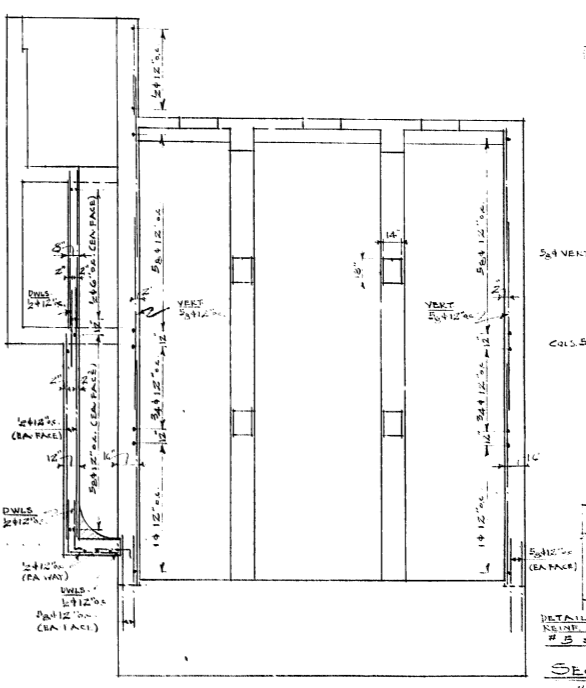
SECTION A-A
1/4" SCALE.



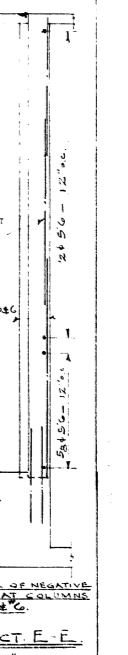
SECTION B-B
1/4" SCALE.



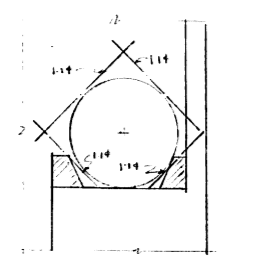
SECTION C-C
1/4" SCALE.



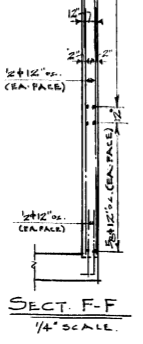
SECTION D-D
1/4" SCALE.



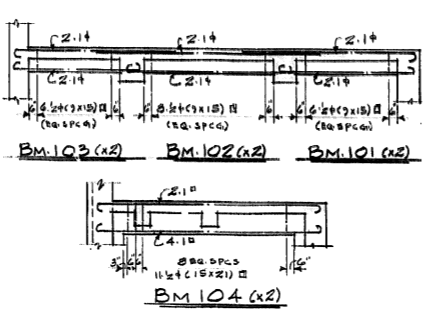
SECTION E-E
1/4" SCALE.



DETAIL OF EXTRA BARS AT
SEWER OPENING
1/4" SCALE.



SECT F-F
1/4" SCALE.



BEAM ELEVATIONS
1/4" SCALE.

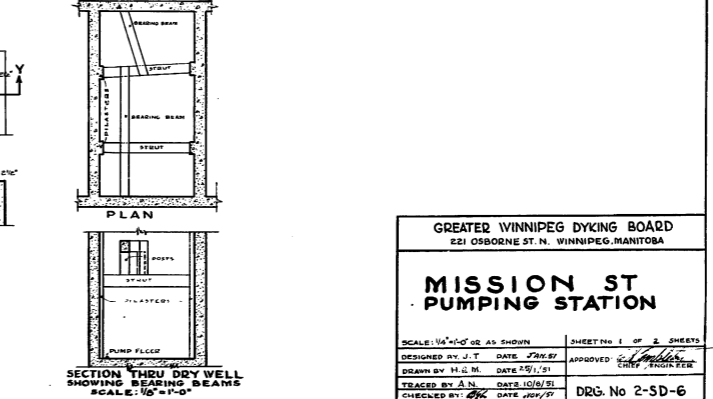
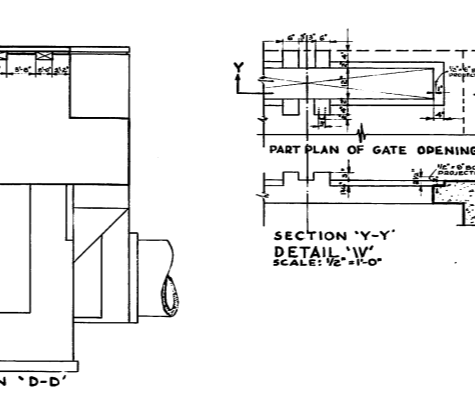
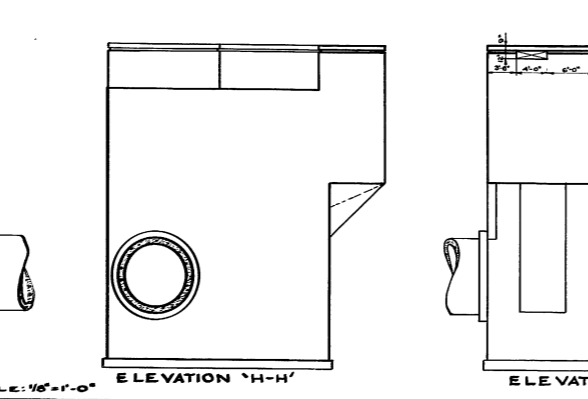
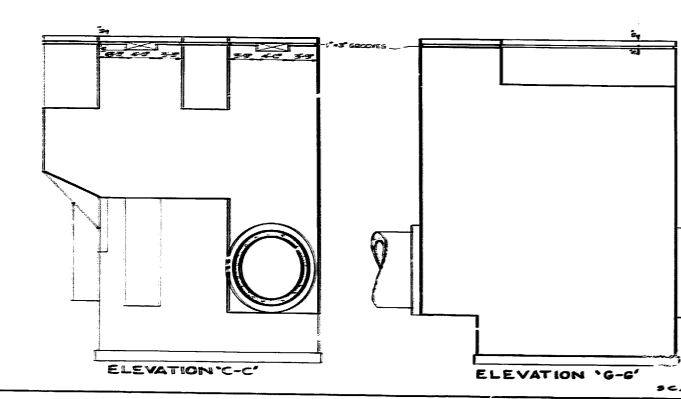
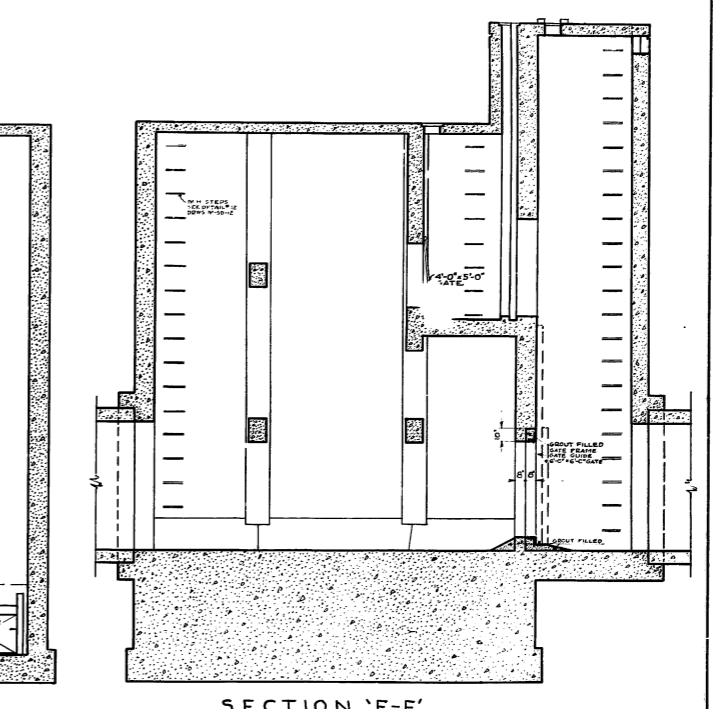
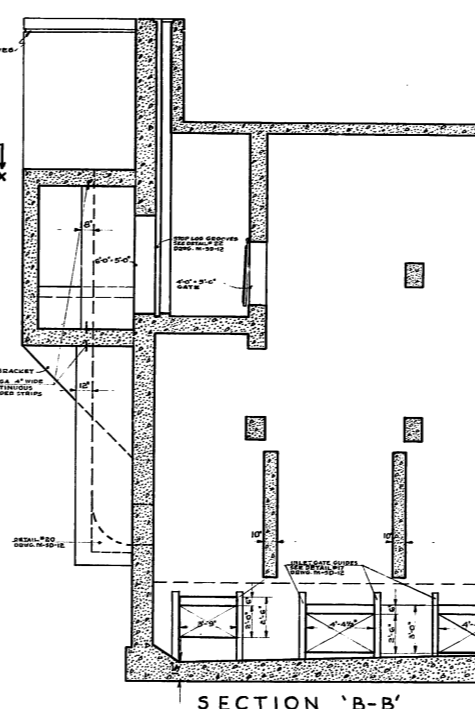
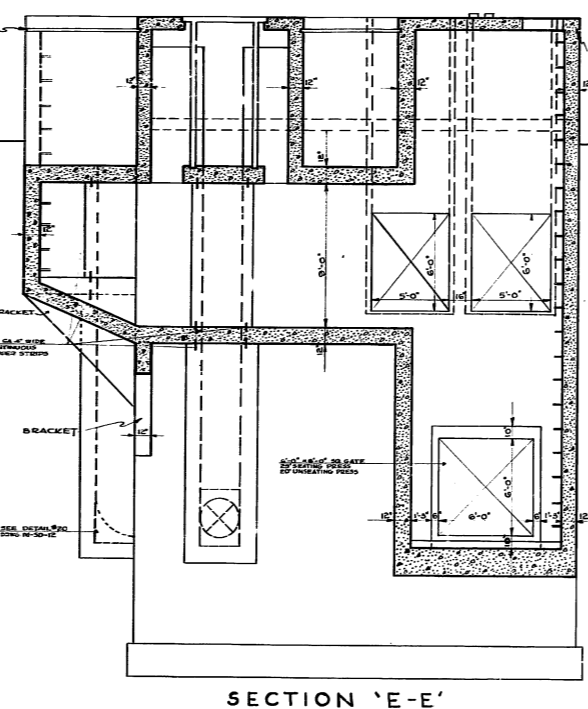
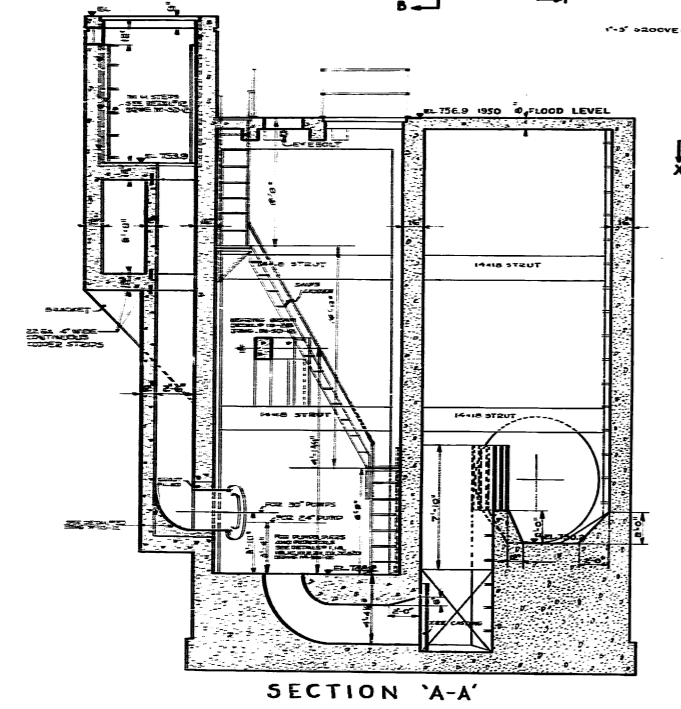
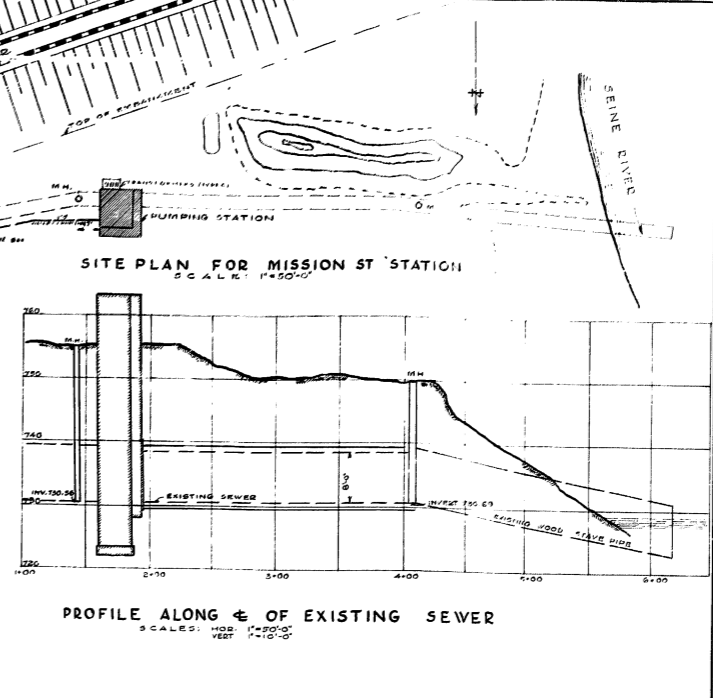
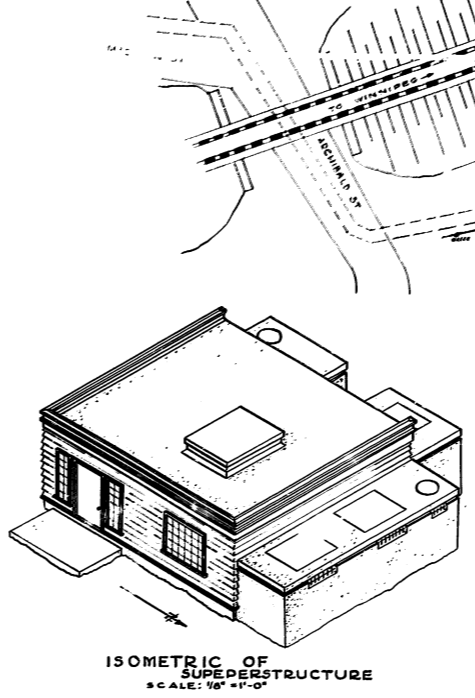
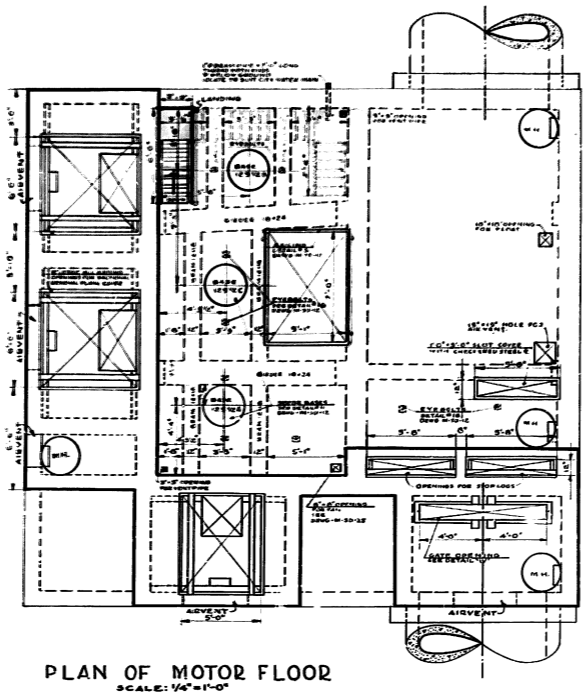
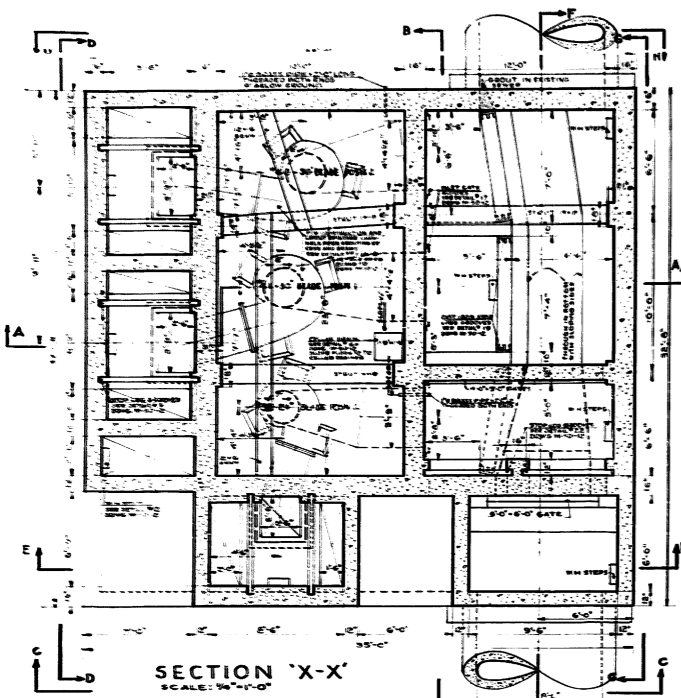
NOTE: WHERE DETAILS ON THIS DRAWING VARY FROM THOSE ON SHEET NO. 1, THE DETAILS SHOWN ON SHEET NO. 1 WILL BE USED.

REVISION	DATE	DESCRIPTION

GREATER WINNIPEG DYKING BOARD
325 OS. 4TH ST. N. WINNIPEG, MANITOBA

MISSION ST.
PUMPING STATION

SCALE: AS SHOWN
DRAWN BY: DATE: JAN 57
CHECKED BY: DATE:
APPROVED:
DRG. No. 2-5D-6

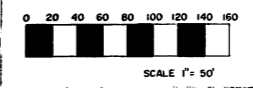


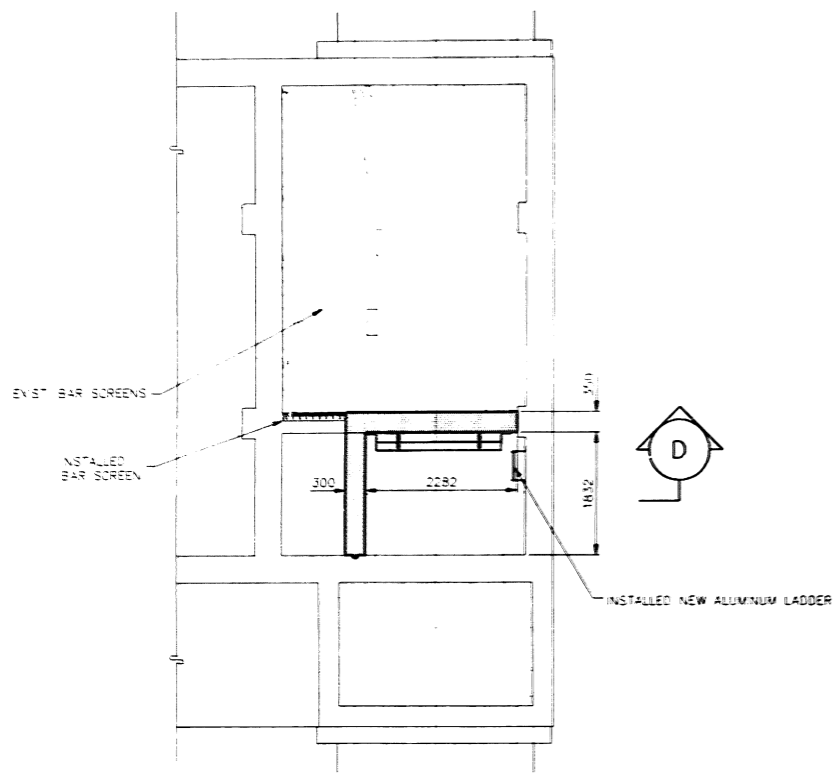
GREATER WINNIPEG DYKING BOARD
221 OSBORNE ST. N. WINNIPEG, MANITOBA

MISSION ST PUMPING STATION

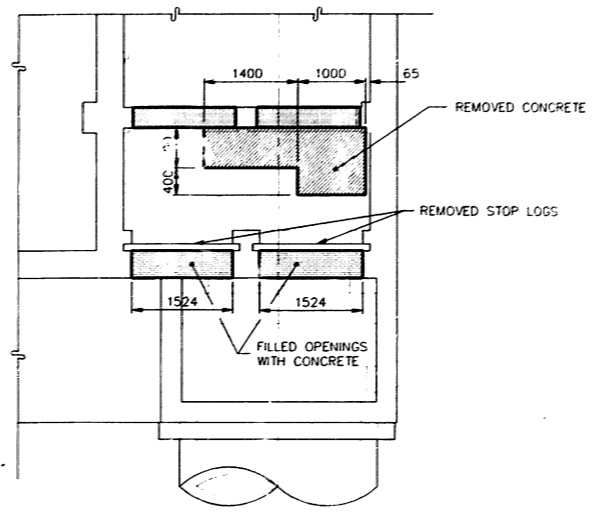
SCALE: 1/4" = 1'-0" AS SHOWN SHEET NO. 1 OF 2 SHEETS
DESIGNED BY J. T. DATE 7/28/51 APPROVED [Signature]
DRAWN BY H. S. M. DATE 10/1/51 CHECKED [Signature]
TRACED BY A. N. DATE 10/1/51
CHECKED BY [Signature] DATE 10/1/51 DRG. No 2-SD-6

29x

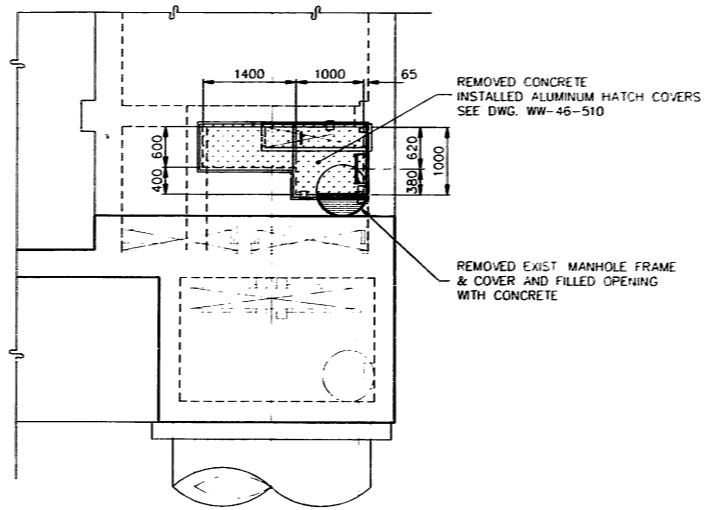




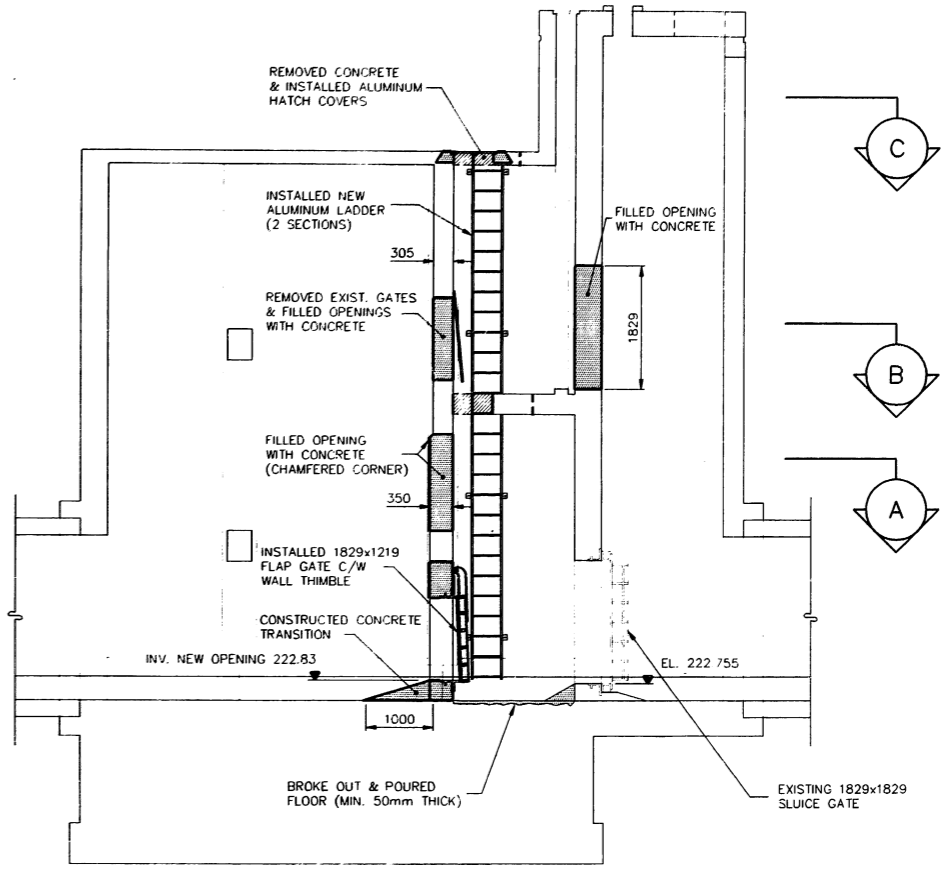
SECTION A
SCALE 1:50



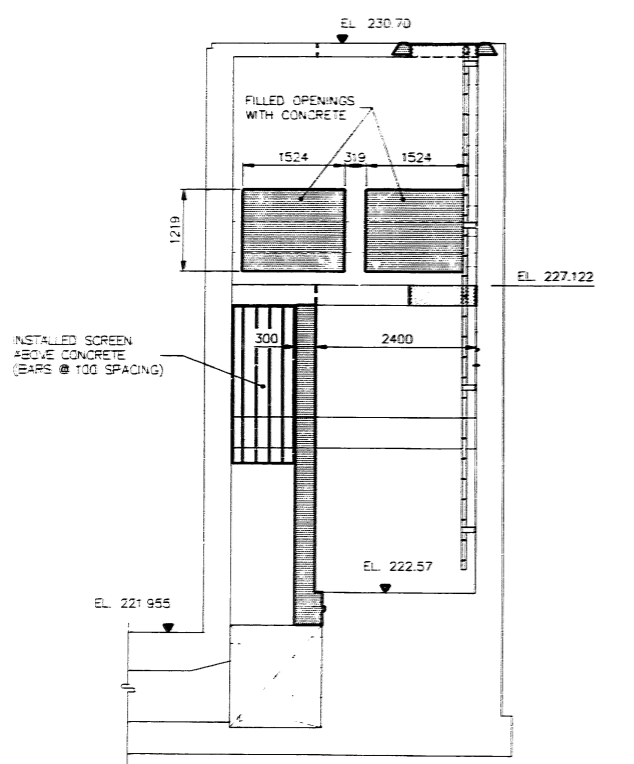
SECTION B
SCALE 1:50



SECTION C
SCALE 1:50



SECTION E
SCALE 1:50



SECTION D
SCALE 1:50

REVISED AS CONSTRUCTED
DATE - 2/3/95 BY: G.D.
CHECKED BY: F.R.

LOCATION APPROVED UNDERGROUND STRUCTURES		B.M. ELEV.	
SUPV. U/G STRUCTURES COMMITTEE	DATE		
NOTE:	LOCATION OF UNDERGROUND STRUCTURES AS SHOWN ARE BASED ON THE BEST INFORMATION AVAILABLE BUT NO GUARANTEE IS GIVEN THAT ALL EXISTING UTILITIES ARE SHOWN OR THAT THE GIVEN LOCATIONS ARE EXACT. CONFIRMATION OF EXISTENCE AND EXACT LOCATION OF ALL SERVICES MUST BE OBTAINED FROM THE INDIVIDUAL UTILITIES BEFORE PROCEEDING WITH CONSTRUCTION.		

NO.	REVISIONS	DATE	BY
1	REVISED TO ASBUILT	2/3/95	G.D.

IDE I.D. ENGINEERING CANADA INC. Professional Engineers WINNIPEG, MANITOBA		ENGINEER'S SEAL PROVINCE OF MANITOBA A. D. MYSKA Dec 10/93 REGISTERED ENGINEER	
DESIGNED BY: A.D.M.	CHECKED BY: A.D.M.	CONSULTANT DRAWING NO. WW-37-510	
DRAWN BY: G.D., G.L.	APPROVED BY: A.D.M.	MISSION FLOOD PUMP STATION FLAP GATE INSTALLATION ARRANGEMENT AND CONCRETE OUTLINES	
HOR. SCALE: AS SHOWN	RELEASED FOR CONSTRUCTION: DATE	CITY DRAWING NUMBER LD-1293	
VERTICAL: AS SHOWN		SHEET 1 OF 10	

THE CITY OF WINNIPEG
WORKS AND OPERATIONS DIVISION
WATERWORKS WASTE & DISPOSAL DEPARTMENT

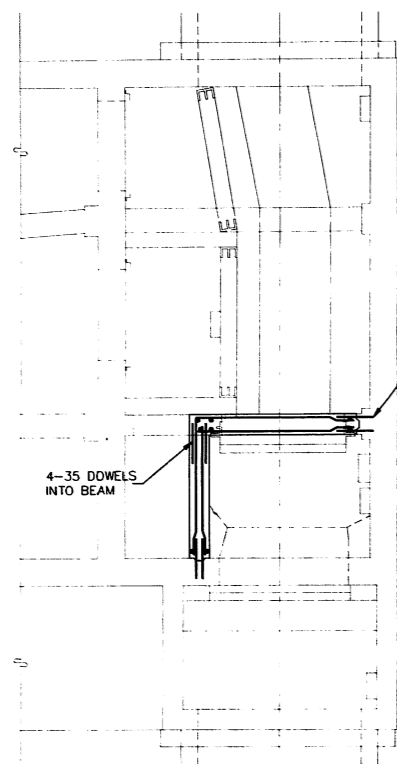
NEWTON, LINDEN, ARMSTRONG AND MISSION
FLOOD CONTROL UPGRADING PROJECT

MISSION FLOOD PUMP STATION
FLAP GATE INSTALLATION ARRANGEMENT
AND CONCRETE OUTLINES

LD-1293

FILE: C:\ACAD\DWG\WWS\WWS.DWG 03/02/95 1:54pm 00

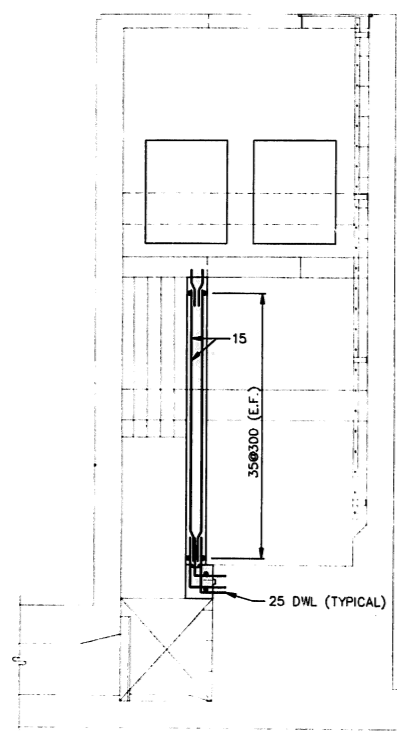
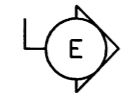
FILE # FP 10402



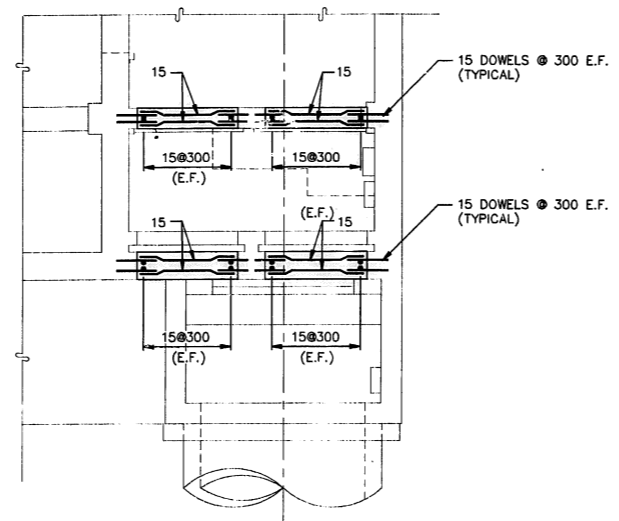
SECTION A
SCALE 1:50

INSTALLED 40x90 KEY & 35 DOWELS @ 300 E.F. (TYPICAL)

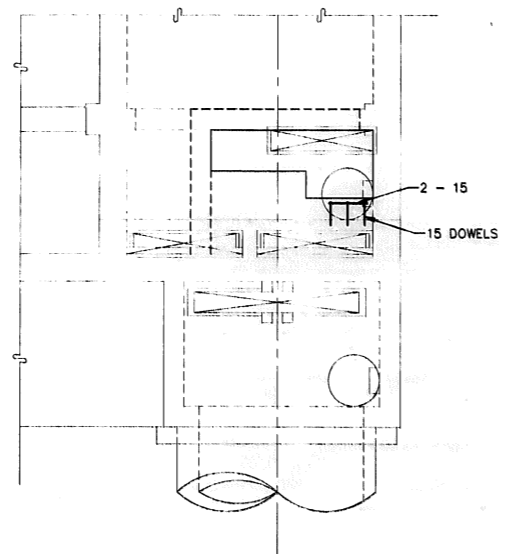
4-35 DOWELS INTO BEAM



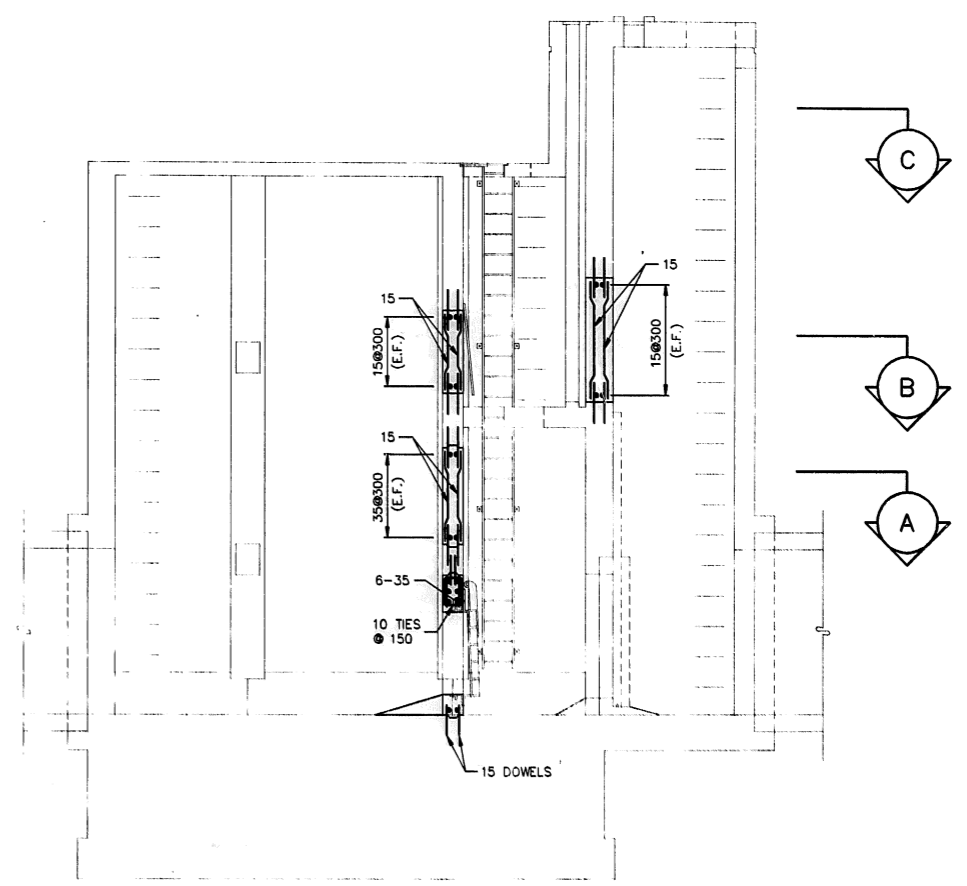
SECTION D
SCALE 1:50



SECTION B
SCALE 1:50



SECTION C
SCALE 1:50



SECTION E
SCALE 1:50

REVISED AS CONSTRUCTED
DATE 2/3/95 BY G.D.
CHECKED BY F.R.

LOCATION APPROVED UNDERGROUND STRUCTURES	
SUPV. U/G STRUCTURES COMMITTEE	DATE
NOTE: LOCATION OF UNDERGROUND STRUCTURES AS SHOWN ARE BASED ON THE BEST INFORMATION AVAILABLE BUT NO GUARANTEE IS GIVEN THAT ALL EXISTING UTILITIES ARE SHOWN OR THAT THE GIVEN LOCATIONS ARE EXACT. CONFIRMATION OF EXISTENCE AND EXACT LOCATION OF ALL SERVICES MUST BE OBTAINED FROM THE INDIVIDUAL UTILITIES BEFORE PROCEEDING WITH CONSTRUCTION.	

B.M. ELEV.	
DESIGNED BY	A.D.M.
CHECKED BY	A.D.M.
DRAWN BY	G.D.
APPROVED BY	A.D.M.
HOR. SCALE:	AS SHOWN
VERTICAL:	AS SHOWN
RELEASED FOR CONSTRUCTION:	
NO. REVISIONS	DATE BY
1	REVISED TO ASBUILT 2/3/95 G.D.
	DATE NOV. 17, 1993

IDE I.D. ENGINEERING CANADA INC.
Professional Engineers
WINNIPEG, MANITOBA

DESIGNED BY A.D.M. CHECKED BY A.D.M.
DRAWN BY G.D. APPROVED BY A.D.M.

HOR. SCALE: AS SHOWN
VERTICAL: AS SHOWN

RELEASED FOR CONSTRUCTION: DATE

PROVINCE OF MANITOBA
A.D. MYSKA
REGISTERED ENGINEER
Dec 19/93

CONSULTANT DRAWING NO.
WW-38-510

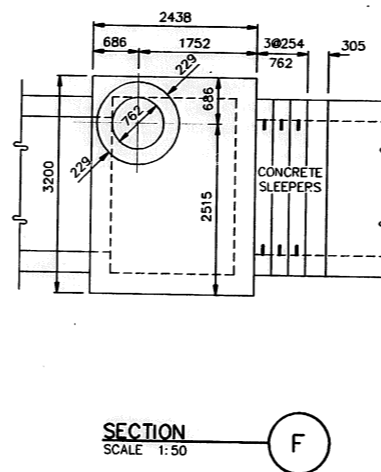
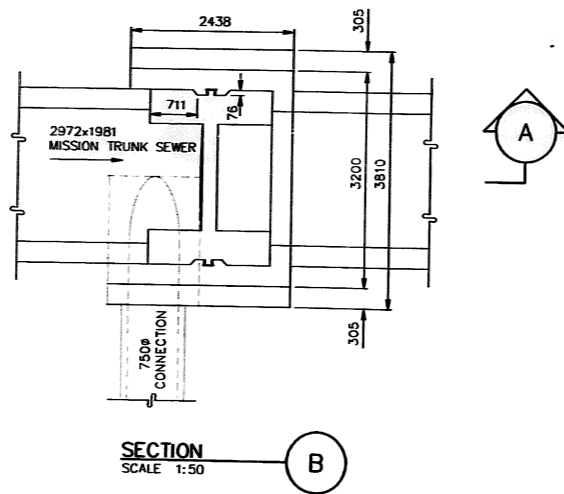
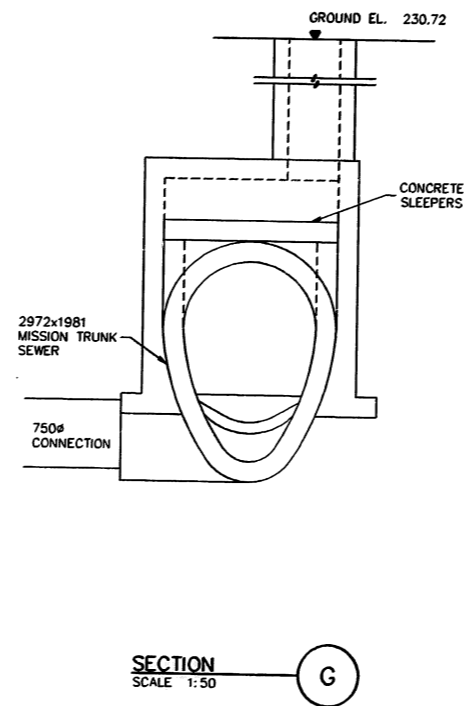
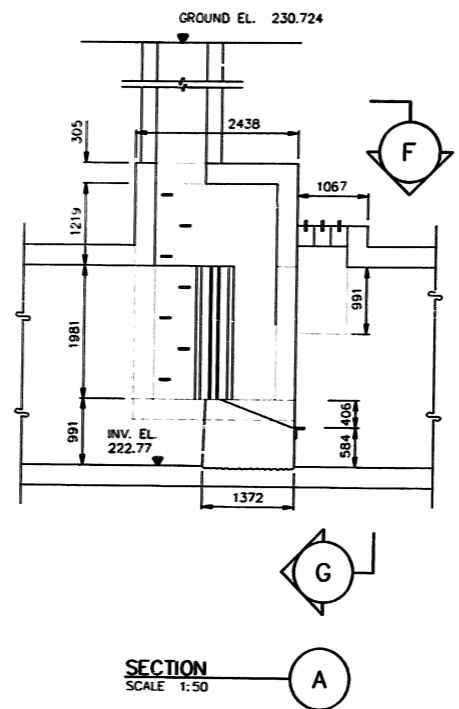
THE CITY OF WINNIPEG
WORKS AND OPERATIONS DIVISION
WATERWORKS WASTE & DISPOSAL DEPARTMENT

NEWTON, LINDEN, ARMSTRONG AND MISSION
FLOOD CONTROL UPGRADING PROJECT

MISSION FLOOD PUMP STATION
STRUCTURAL REINFORCING DETAILS

CITY DRAWING NUMBER
SHEET 2 OF 10
LD-1294

FILE: C:\ACAL\1\LODD\MISSION2.DWG 03/02/95 2:03pm GD



REVISED AS CONSTRUCTED
DATE 2/3/95 BY G.D.
CHECKED BY F.R.

LOCATION APPROVED UNDERGROUND STRUCTURES
S.U.P.V. U/G STRUCTURES COMMITTEE DATE
NOTE:
LOCATION OF UNDERGROUND STRUCTURES AS SHOWN ARE BASED ON THE BEST INFORMATION AVAILABLE BUT NO GUARANTEE IS GIVEN THAT ALL EXISTING UTILITIES ARE SHOWN OR THAT THE GIVEN LOCATIONS ARE EXACT. CONFIRMATION OF EXISTENCE AND EXACT LOCATION OF ALL SERVICES MUST BE OBTAINED FROM THE INDIVIDUAL UTILITIES BEFORE PROCEEDING WITH CONSTRUCTION.

NO.	REVISIONS	DATE	BY
1	REVISED TO ASBUILT	2/3/95	G.D.

IDE I.D. ENGINEERING CANADA INC.
Professional Engineers
WINNIPEG, MANITOBA

DESIGNED BY A.D.M.	CHECKED BY A.D.M.
DRAWN BY G.D., G.L.	APPROVED BY A.D.M.
HOR. SCALE: VERTICAL: AS SHOWN	RELEASED FOR CONSTRUCTION: DATE

ENGINEER
PROVINCE OF MANITOBA
A.D. MYSKA
REGISTERED ENGINEER
CONSULTANT DRAWING NO.
WW-39-510

THE CITY OF WINNIPEG
WORKS AND OPERATIONS DIVISION
WATERWORKS WASTE & DISPOSAL DEPARTMENT
NEWTON, LINDEN, ARMSTRONG AND MISSION
FLOOD CONTROL UPGRADING PROJECT
CITY DRAWING NUMBER
SHEET 3 OF 10
MISSION FLOOD PUMP STATION
FLAP GATE REMOVAL
LD-1295

24x

FILE # FP10404