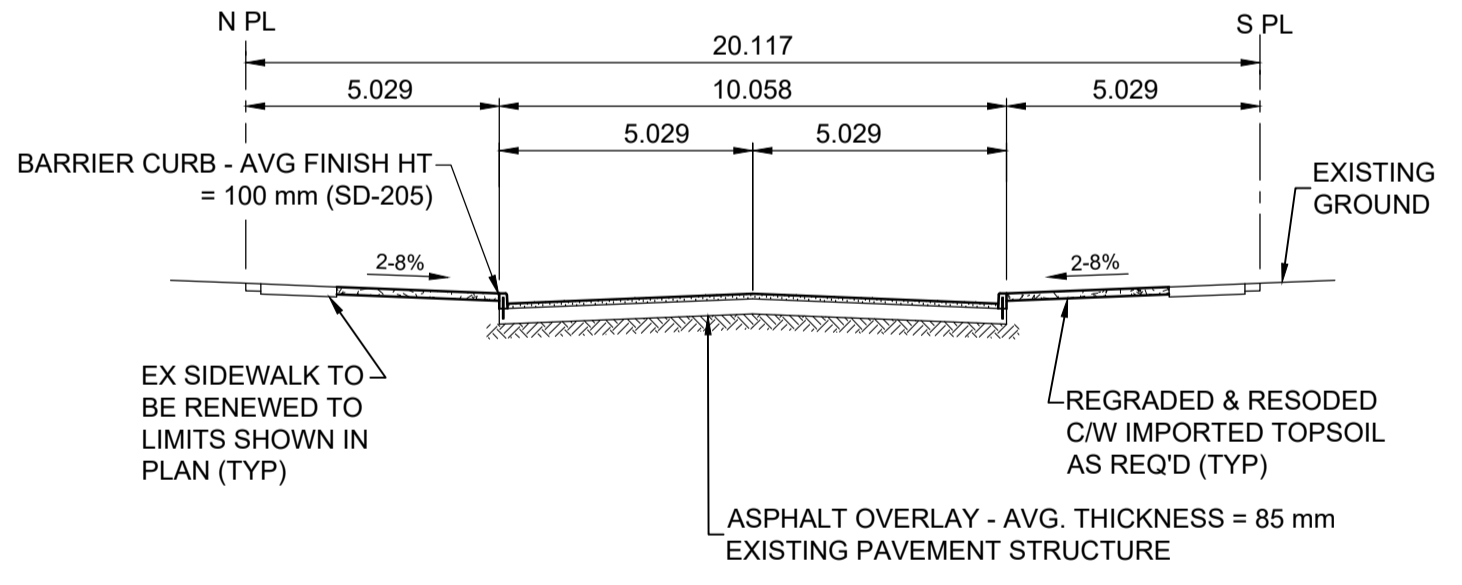
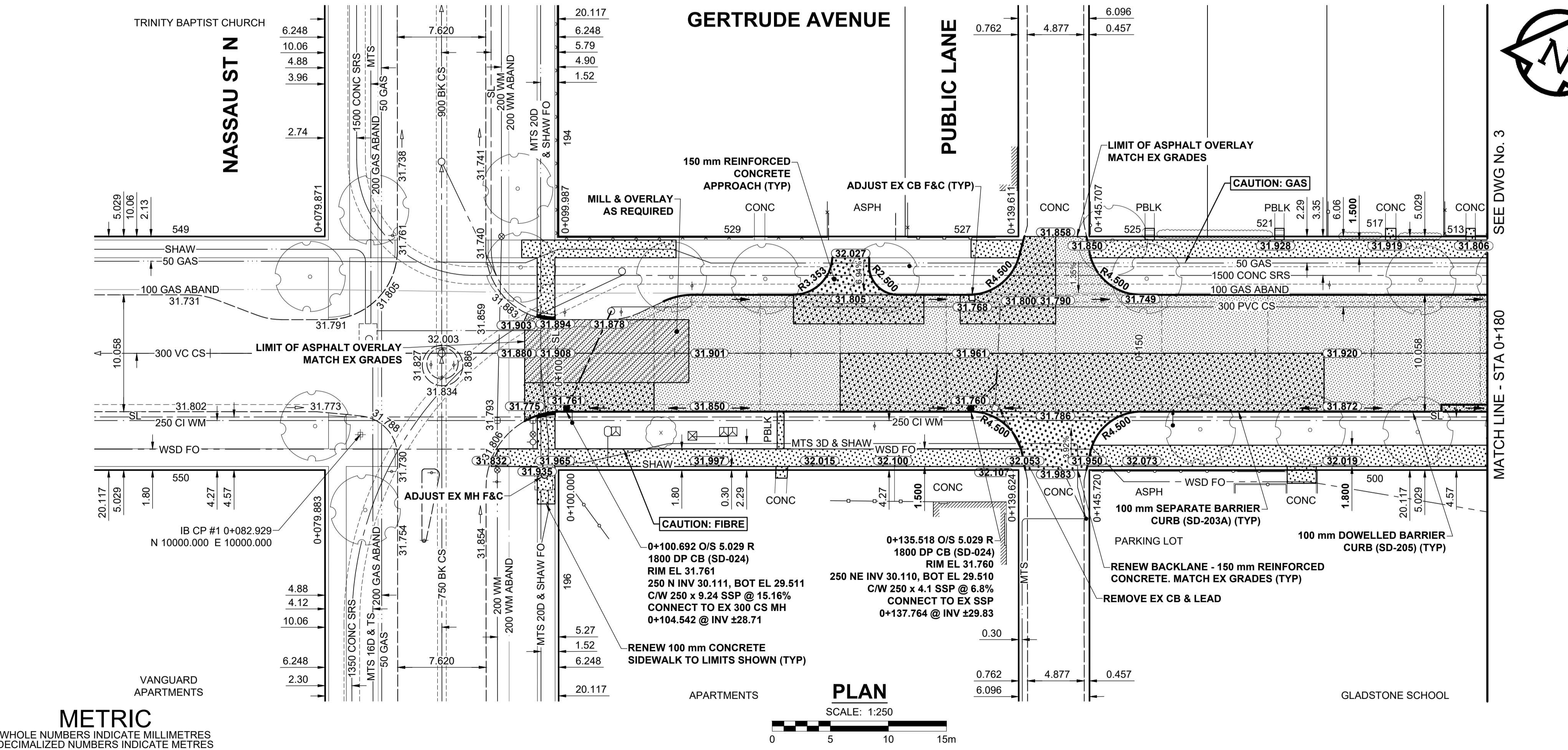


- NOTES**
- ADJUST MH AND CB RIMS TO NEW GRADES.
 - LAMP STANDARDS, HYDRO POLES, AND ANCHORS THAT REQUIRE TEMPORARY SUPPORT, REMOVAL OR REPLACEMENT, TO BE DONE SO AT THE EXPENSE OF THE CONTRACTOR AS NECESSARY.
 - CONTRACTOR TO REGRADE/RENEW EXISTING PRIVATE SIDEWALKS TO LIMITS AS SHOWN. SIDEWALKS TO BE RENEWED WITH CONCRETE UNLESS NOTED OTHERWISE.
 - CONTRACTOR TO TAKE PRECAUTIONARY STEPS TO PROTECT EXISTING TREES WITHIN THE LIMITS OF CONSTRUCTION FROM DAMAGE FROM CONSTRUCTION ACTIVITIES AS OUTLINED IN THE SPECIFICATIONS.
 - CONTRACTOR TO CONFIRM THE LOCATION OF ALL UTILITIES/SERVICES IN THE FIELD PRIOR TO CONSTRUCTION.
 - MODIFIED BARRIER CURB TO BE USED AT ALL INTERSECTION RADII, BACK LANE RADII AND BULLNOSES.
 - CONTRACTOR TO OVERLAY DRIVEWAYS TO ENSURE POSITIVE DRAINAGE TO NEW STREET GRADES. FINAL LIMITS TO BE DETERMINED IN THE FIELD BY CONTRACT ADMINISTRATOR.
 - CB SD-023 & SD-024 OFFSETS ARE DIMENSIONED TO BOC. CB SD-025 OFFSETS ARE DIMENSIONED O/C.
 - REFER TO TENDER FOR DETAILS REGARDING TRAFFIC MANAGEMENT.
 - ADD 200.000 m TO ABBREVIATED ELEVATIONS TO OBTAIN GEODETIC ELEVATIONS.



TYPICAL PAVEMENT SECTION
ASPHALT REHABILITATION
SCALE: NTS

METRIC
WHOLE NUMBERS INDICATE MILLIMETRES
DECIMALIZED NUMBERS INDICATE METRES

---	GAS	○	MANHOLE	●	CONCRETE PAVEMENT	□	LOCATION APPROVED UNDERGROUND STRUCTURES
---○---	MTS HANDWELL/PEDESTAL	□	CATCH BASIN/CATCH PIT	■	CONC SIDEWALK/MEDIAN	▨	DATE
---□---	HYDRO HANDWELL/CABINET	△	CURB INLET WITH BOX	▲	ASPHALT PAVEMENT	▩	COMMITTEE
---	CATV/FIBRE OPTIC	○	TREE	○	PAVING STONE	▨	
---	TRAFFIC SIGNALS/PIT	⊕	TEST HOLE	⊕	GRAVEL	▨	
---	LAND DRAINAGE SEWER	---	PROPERTY LINE	---	RAMP CURB	▨	
---	SANITARY/COMBINED SEWER	---	SURVEY BAR	---	PLANING/REMOVAL	▨	
---	CB LEAD/SSP/DCP	---	FENCE	---			
---	WATERMAIN	---	BOC/EDGE OF PAVEMENT	---			
---	SUBDRAIN	---	ELEVATION (33.333)	---			
---	DITCH	---	TRAFFIC SIGN	---			
---	EXISTING	---	LEGEND - PLAN	---			
---	NEW	---	LEGEND - PLAN	---			

B	ISSUED FOR TENDER	20/04/20	RPB
A	ISSUED FOR REVIEW	20/03/13	RPB
No.	REVISIONS	YY/MM/DD	BY

S. side Wellington Cres. Btwn. Gertrude Ave. & Wardlaw Ave., Tolt. in N. Conc. foundation of No. 250 Wellington Cr. 6.5 m W. & 0.2 m below back from N.E. Cor. of Bldg.

DESIGNED BY	ACK	CHECKED BY	WRJ
DRAWN BY	DML	APPROVED BY	BWB
RELEASED FOR CONSTRUCTION			
CONSULTANT FILE NAME 1905658-Gertrude-PP-01.dwg			

THE CITY OF WINNIPEG
PUBLIC WORKS DEPARTMENT
ENGINEERING DIVISION

2020 LOCAL STREET RENEWAL PROGRAM
GERTRUDE AVENUE
NASSAU ST N TO OSBORNE ST
REHABILITATION
PAVING AND GRADING
NASSAU ST N TO STA 0+180

CITY DRAWING NUMBER: N/A
SHEET 2 OF 20
DRAWING NUMBER: 2

PROFESSIONAL'S SEAL
PRELIMINARY DRAWING
NOT TO BE USED FOR CONSTRUCTION

ENGINEERS GEOSCIENTISTS MANITOBA
Certificate of Authorization
MORRISON HERSHFIELD
No. 1736
TENDER No. 19-2020