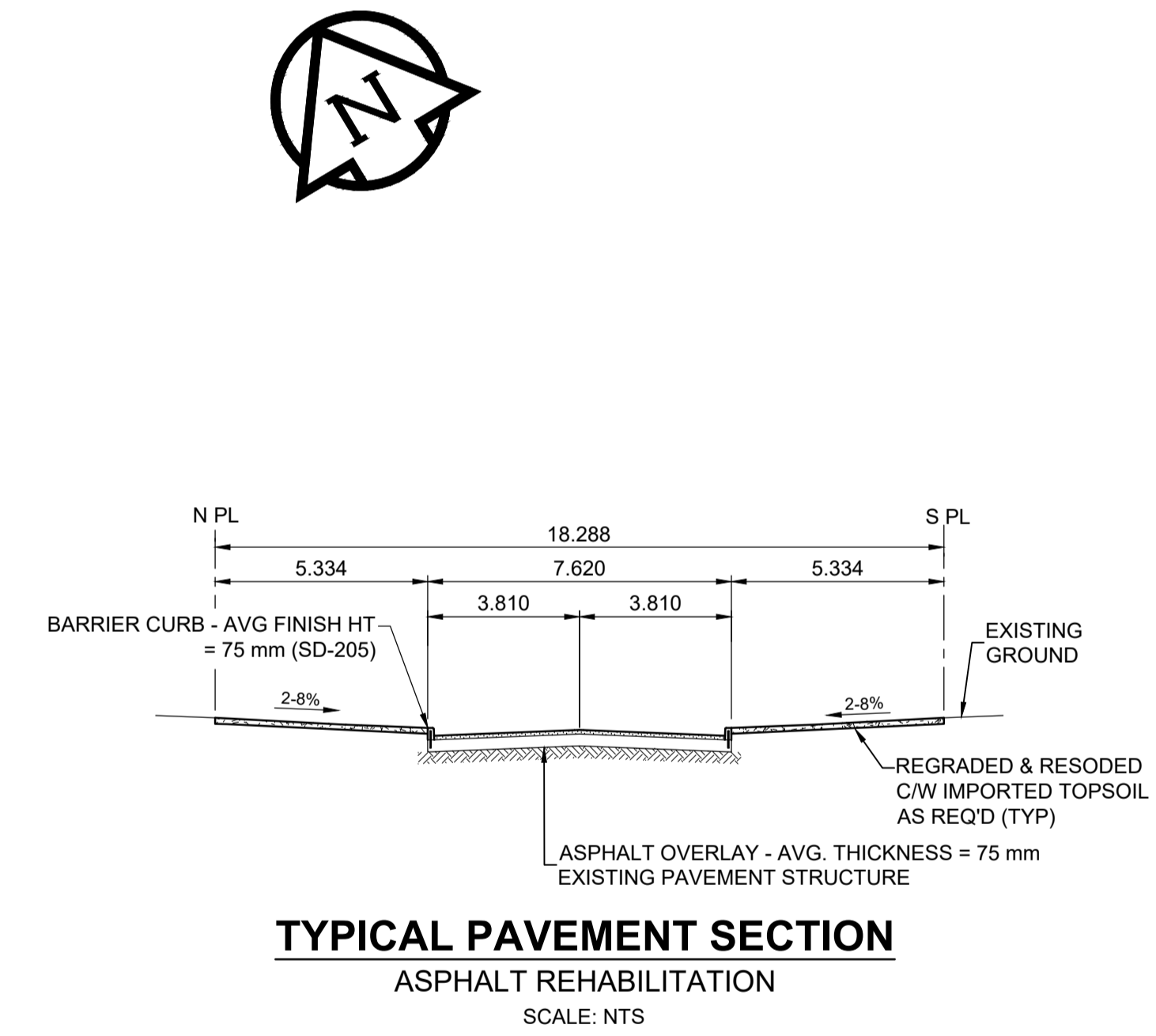
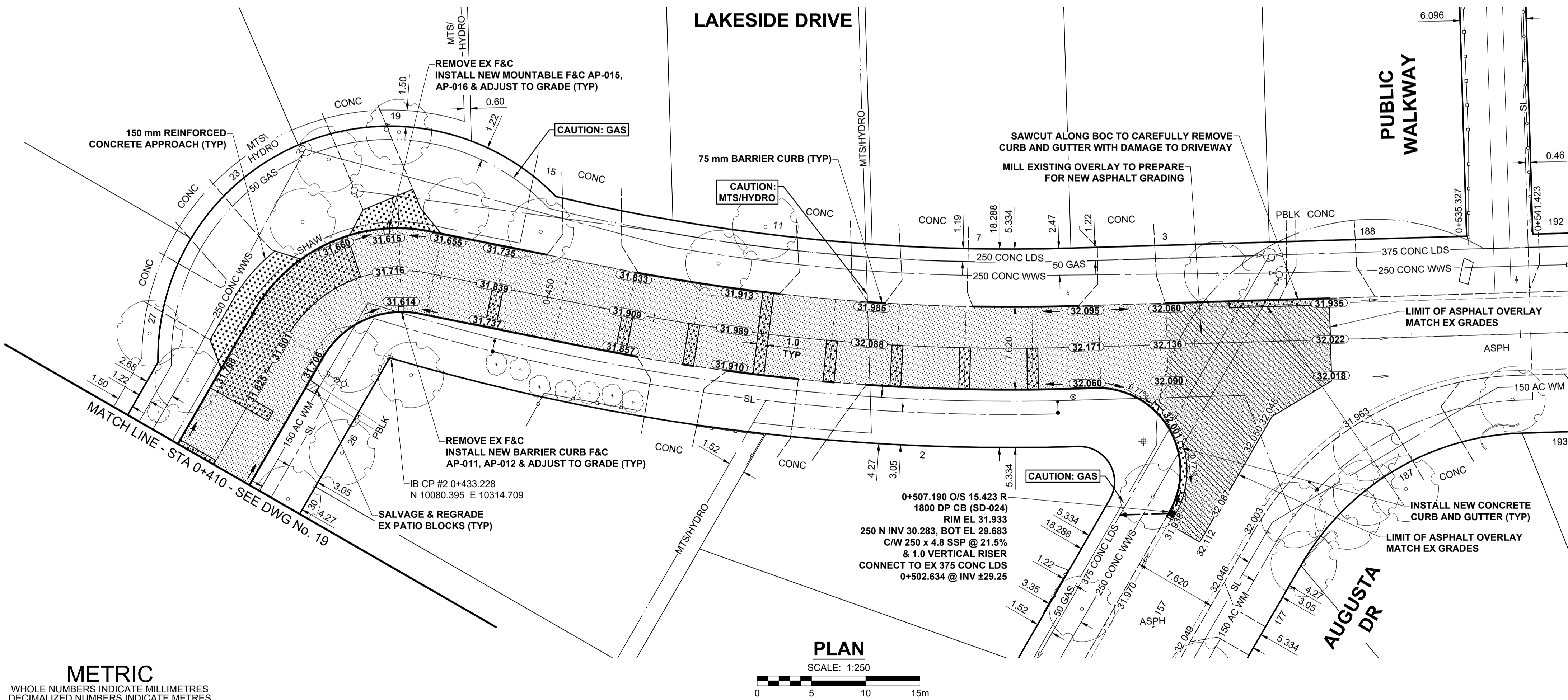


- NOTES**
- ADJUST MH AND CB RIMS TO NEW GRADES.
 - LAMP STANDARDS, HYDRO POLES, AND ANCHORS THAT REQUIRE TEMPORARY SUPPORT, REMOVAL OR REPLACEMENT, TO BE DONE SO AT THE EXPENSE OF THE CONTRACTOR AS NECESSARY.
 - CONTRACTOR TO REGRADE/RENEW EXISTING PRIVATE SIDEWALKS TO LIMITS AS SHOWN. SIDEWALKS TO BE RENEWED WITH CONCRETE UNLESS NOTED OTHERWISE.
 - CONTRACTOR TO TAKE PRECAUTIONARY STEPS TO PROTECT EXISTING TREES WITHIN THE LIMITS OF CONSTRUCTION FROM DAMAGE FROM CONSTRUCTION ACTIVITIES AS OUTLINED IN THE SPECIFICATIONS.
 - CONTRACTOR TO CONFIRM THE LOCATION OF ALL UTILITIES/SERVICES IN THE FIELD PRIOR TO CONSTRUCTION.
 - MODIFIED BARRIER CURB TO BE USED AT ALL INTERSECTION RADII, BACK LANE RADII AND BULLNOSES.
 - CONTRACTOR TO OVERLAY DRIVEWAYS TO ENSURE POSITIVE DRAINAGE TO NEW STREET GRADES. FINAL LIMITS TO BE DETERMINED IN THE FIELD BY CONTRACT ADMINISTRATOR.
 - CB SD-023 & SD-024 OFFSETS ARE DIMENSIONED TO BOC. CB SD-025 OFFSETS ARE DIMENSIONED O/C.
 - REFER TO TENDER FOR DETAILS REGARDING TRAFFIC MANAGEMENT.
 - ADD 200.000 m TO ABBREVIATED ELEVATIONS TO OBTAIN GEODETIC ELEVATIONS.



METRIC
WHOLE NUMBERS INDICATE MILLIMETRES
DECIMALIZED NUMBERS INDICATE METRES

---	GAS	○	MANHOLE	●	CONCRETE PAVEMENT	□	LOCATION APPROVED UNDERGROUND STRUCTURES
○	MTS HANDWELL/PEDESTAL	△	CATCH BASIN/CATCH PIT	■	CONC SIDEWALK/MEDIAN	□	SUPR. U/G STRUCTURES
□	HYDRO HANDWELL/CABINET	□	CURB INLET WITH BOX	▲	ASPHALT PAVEMENT	□	DATE
---	CATV/FIBRE OPTIC	○	TREE	---	PAVING STONE	---	NOTE:
---	TRAFFIC SIGNALS/PIT	⊕	TEST HOLE	---	GRAVEL	---	LOCATION OF UNDERGROUND STRUCTURES AS SHOWN ARE BASED ON THE BEST INFORMATION AVAILABLE BUT NO GUARANTEE IS GIVEN THAT ALL EXISTING UTILITIES ARE SHOWN OR THAT THE GIVEN LOCATIONS ARE EXACT. CONFIRMATION OF EXISTENCE AND EXACT LOCATION OF ALL SERVICES MUST BE OBTAINED FROM THE INDIVIDUAL UTILITIES BEFORE PROCEEDING WITH CONSTRUCTION.
---	LAND DRAINAGE SEWER	⊕	PROPERTY LINE	---	RAMP CURB	---	
---	SANITARY/COMBINED SEWER	⊕	SURVEY BAR	---	PLANING/REMOVAL	---	
---	CB LEAD/SSP/DCP	---	FENCE	---		---	
---	WATERMAIN	---	BOC/EDGE OF PAVEMENT	---		---	
---	SUBDRAIN	33.000	ELEVATION	---		---	
---	DITCH	---	TRAFFIC SIGN	---		---	
---	EXISTING	---	LEGEND - PLAN	---	EXISTING	---	LEGEND - PLAN
---	NEW	---	LEGEND - PLAN	---	NEW	---	LEGEND - PLAN

BIM	76-021	N.E. Cor. Markham & Chancellor, Tbt. in W. Conc. Ind. Arthur A. Leach School, 12 m N. of prod. of the most S.W. wall & 0.4 m below top of Conc. Ind. of S.W. Cor. of Bldg.
ELEV	232.526 m	
DESIGNED BY	RPB	CHECKED BY GFC
DRAWN BY	DML	APPROVED BY BWB
ISSUED FOR TENDER	20/04/20	RFB
ISSUED FOR REVIEW	20/03/13	RPB
REVISIONS	Y/M/D	BY
DATE	20/03/13	DATE

DESIGNED BY	RPB
DRAWN BY	DML
ISSUED FOR TENDER	20/04/20
ISSUED FOR REVIEW	20/03/13
REVISIONS	Y/M/D
DATE	20/03/13

PROFESSIONAL'S SEAL
PRELIMINARY DRAWING
NOT TO BE USED FOR CONSTRUCTION
CONSULTANT FILE NAME 1905658-Lakeside-PP-04.dwg

THE CITY OF WINNIPEG
PUBLIC WORKS DEPARTMENT
ENGINEERING DIVISION

2020 LOCAL STREET RENEWAL PROGRAM
LAKESIDE DRIVE
CHANCELLOR DR TO AUGUSTA DR
REHABILITATION
PAVING AND GRADING
STA 0+410 TO AUGUSTA DR

CITY DRAWING NUMBER: N/A
SHEET OF: 20 OF 20
DRAWING NUMBER: 20

TENDER No. 19-2020