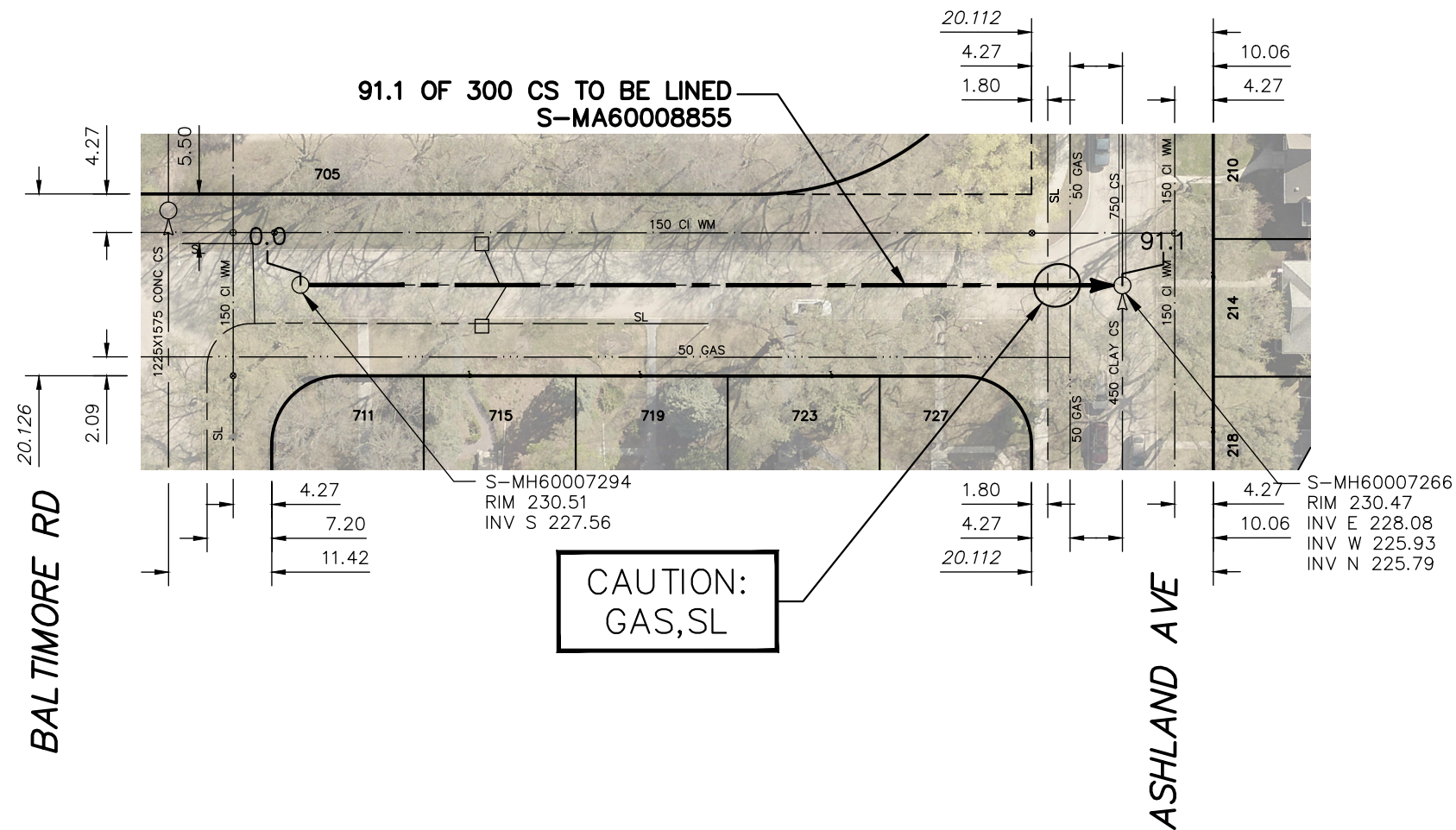


# FISHER STREET



SEWER JUNCTION INFORMATION FROM SEWER VIDEO INSPECTION		
SEWER ID S-MA60008855		
DISTANCE FROM MH ID S-MH60007294		
DISTANCE	DIAMETER	CLOCK
21.9	150	2
22.5	150	10
23.3	250	2
30.3	150	2
39.6	150	2
47.4	150	2
55.3	150	2
64.5	150	1
64.6	150	1
73.2	150	10
81.0	150	1

BALTIMORE RD

ASHLAND AVE

CAUTION:  
GAS, SL

### WARNING

IF POWER EQUIPMENT OR EXPLOSIVES ARE TO BE USED FOR EXCAVATION ON THIS PROJECT THE CONTRACTOR MUST:

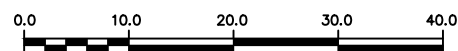
- 1) NOTIFY THE GAS COMPANY OF THE PROPOSED LOCATION OF EXCAVATION.
- 2) TAKE PRECAUTION TO AVOID DAMAGE TO GAS COMPANY INSTALLATIONS.

SEE PROVINCIAL REGULATION 210/72 FOR DETAILS

FOR INDEX SEE  
12443

### METRIC

WHOLE NUMBERS INDICATE MILLIMETRES  
DECIMALIZED NUMBERS INDICATE METRES



LOCATION APPROVED  
UNDERGROUND STRUCTURES

B.M.  
ELEV.

SUPV. U/G STRUCTURES COMMITTEE DATE

NOTE:

LOCATION OF UNDERGROUND STRUCTURES AS SHOWN ARE BASED ON THE BEST INFORMATION AVAILABLE BUT NO GUARANTEE IS GIVEN THAT ALL EXISTING UTILITIES ARE SHOWN OR THAT THE GIVEN LOCATIONS ARE EXACT. CONFIRMATION OF EXISTENCE AND EXACT LOCATION OF ALL SERVICES MUST BE OBTAINED FROM THE INDIVIDUAL UTILITIES BEFORE PROCEEDING WITH CONSTRUCTION.

NO.	REVISIONS	DATE	BY

DESIGNED BY	SC	CHECKED BY	SC
DRAWN BY	RS	APPROVED BY	KZ
SCALE:		RELEASED FOR CONSTRUCTION	
HORIZONTAL	1:750		
VERTICAL			
		<b>K. ZUREK</b>	
DATE	2020 04 23	DATE	2020-04-22

ENGINEER'S SEAL

ORIGINAL  
SIGNED BY  
**S.R.J. COURNOYER**  
2020/04/17

CONSULTANT DRAWING NUMBER



**THE CITY OF WINNIPEG**  
WATER AND WASTE DEPARTMENT  
ENGINEERING DIVISION

2020 SEWER MAIN RENEWALS  
BY AUGMENTATION  
**FISHER STREET**  
MH AT BALTIMORE ROAD (S-R) TO  
MH AT ASHLAND AVENUE

SHEET 22 OF 60

CITY DRAWING NUMBER

12463

PLOT DATE: 2020 04 23

BID OPPORTUNITY: 197-2020  
CONTRACT NUMBER: 6

FILE PATH: R:\DRAWINGS\SEWER\2019 RENEWALS\RENEWALS & ASSOCIATED WORKS\2019 supplementals\CONTRACT #6\Construction Dwg\SIGNED CONSTRUCTION DRAWINGS\  
FILE NAME: 197-2020\_Drawing\_D-12463-R0.dwg