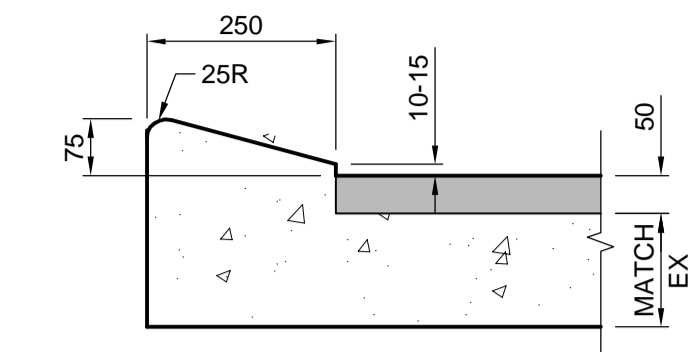
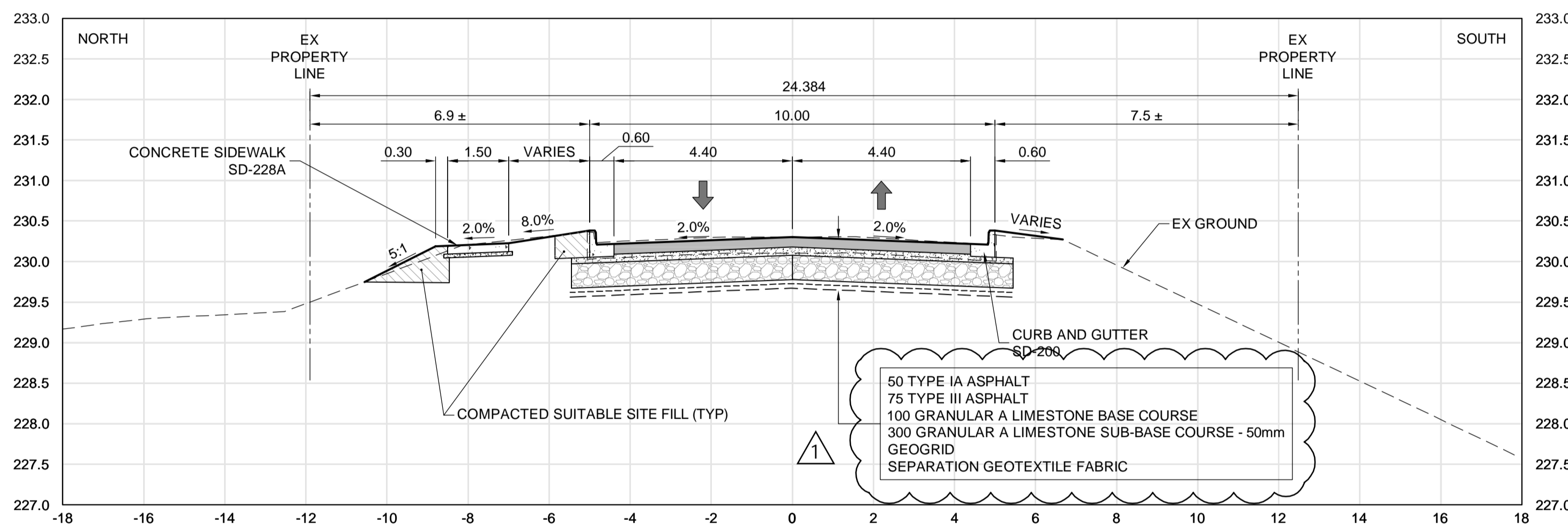


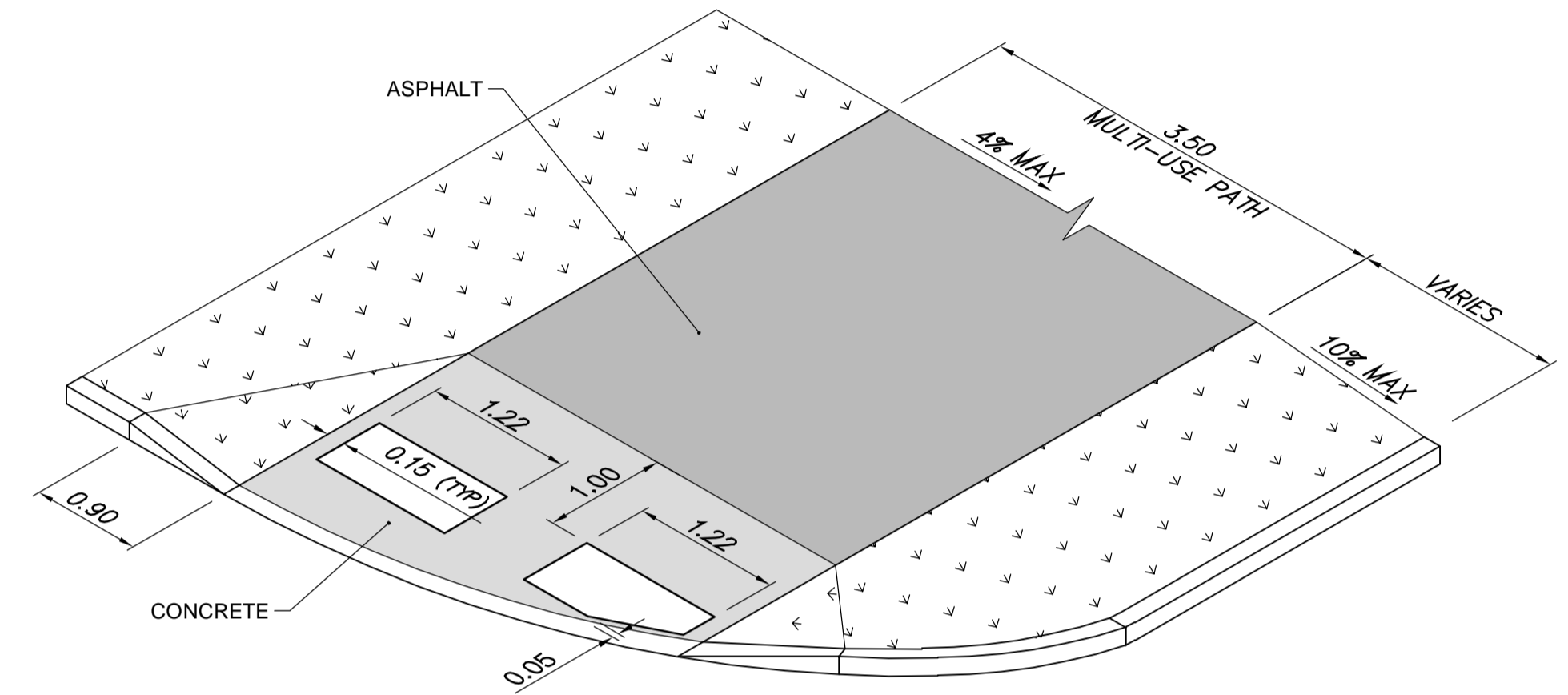
A SECTION - SPEERS ROAD - STA. 1+255
04/13 SCALE: H=1:100, V=1:50



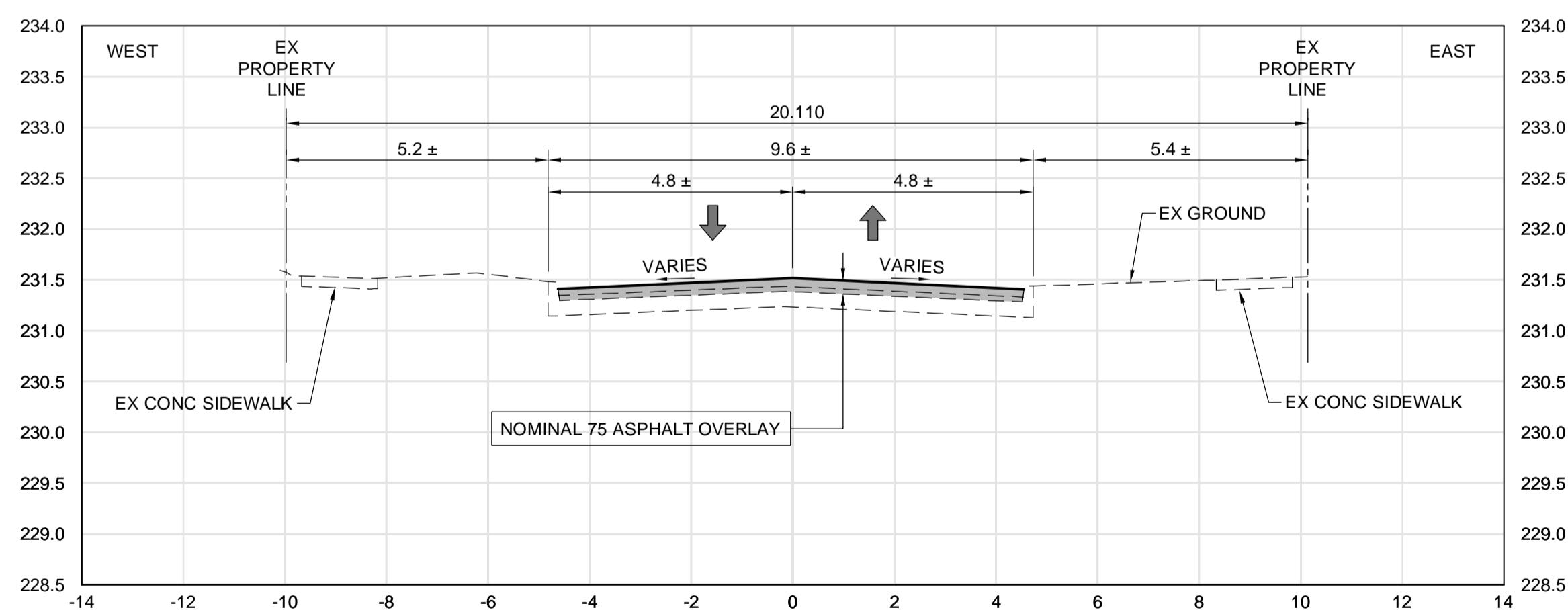
1 INTEGRAL MODIFIED 75 mm LIP CURB
03/13 SCALE: 1:10



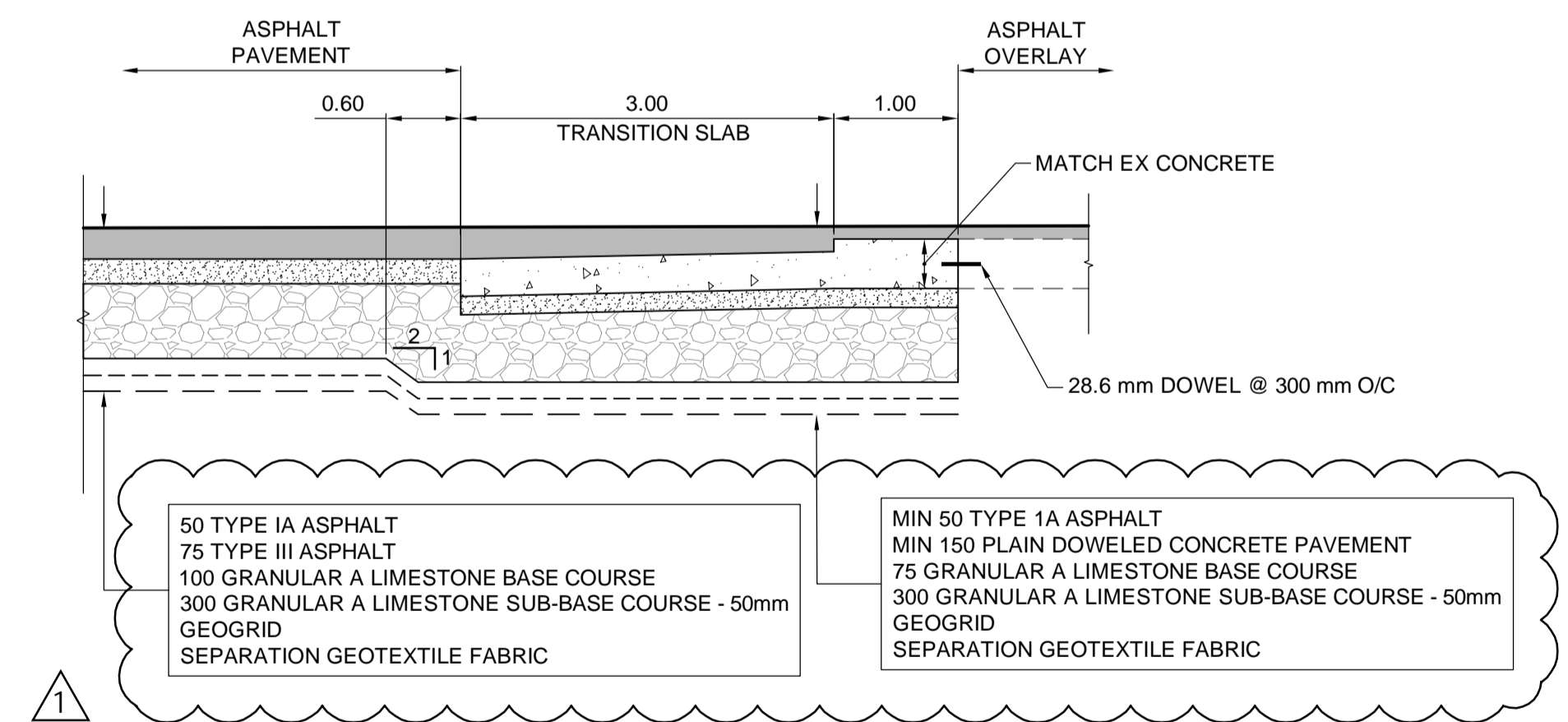
B SECTION - LYNDALE DRIVE - STA. 1+165
09/13 SCALE: H=1:100, V=1:50



2 DUAL DETECTABLE WARNING SURFACE TILES
03.04.05.06/13 SCALE: 1:50



C SECTION - DES MEURONS STREET - STA. 0+185
12/13 SCALE: H=1:100, V=1:50



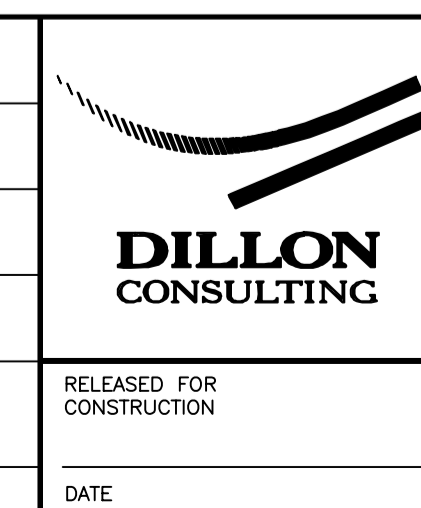
3 TRANSITION SLAB - ASP TO CONC WITH ASP OVLY
09.10/20 SCALE: H=1:50, V=1:25

**PRELIMINARY ONLY
NOT FOR CONSTRUCTION**



UNDERGROUND STRUCTURES		B.M. ELEV.	DESIGNED BY
SUPV. U/G STRUCTURES	DATE		JAT/RTP
			DRAWN BY
			TJH/PMW
			CHECKED BY
			JAT/RTP
			APPROVED BY
			BC
			HOR. SCALE
			AS NOTED
			VERTICAL
			AS NOTED
NO.	REVISIONS	DATE	BY
1	ISSUED FOR ADDENDUM #1	20/04/14	BC
0	ISSUED FOR TENDER	20/04/02	BC

DESIGNED BY	ENGINEER'S SEAL
JAT/RTP	
DRAWN BY	
TJH/PMW	
CHECKED BY	
JAT/RTP	
APPROVED BY	
BC	
HOR. SCALE	
AS NOTED	
VERTICAL	
AS NOTED	
DATE	



CONSULTANT PROJECT NUMBER
18-8858

THE CITY OF WINNIPEG
PUBLIC WORKS DEPARTMENT

2020 LOCAL STREETS RENEWAL PROGRAM
SPEERS ROAD, LYNDALE DRIVE, AND
DES MEURONS STREET

CITY DRAWING NUMBER
SHEET 13 OF 13
CONSULTANT DRAWING NUMBER

SECTIONS AND DETAILS