

RAIL CROSSING NOTES:

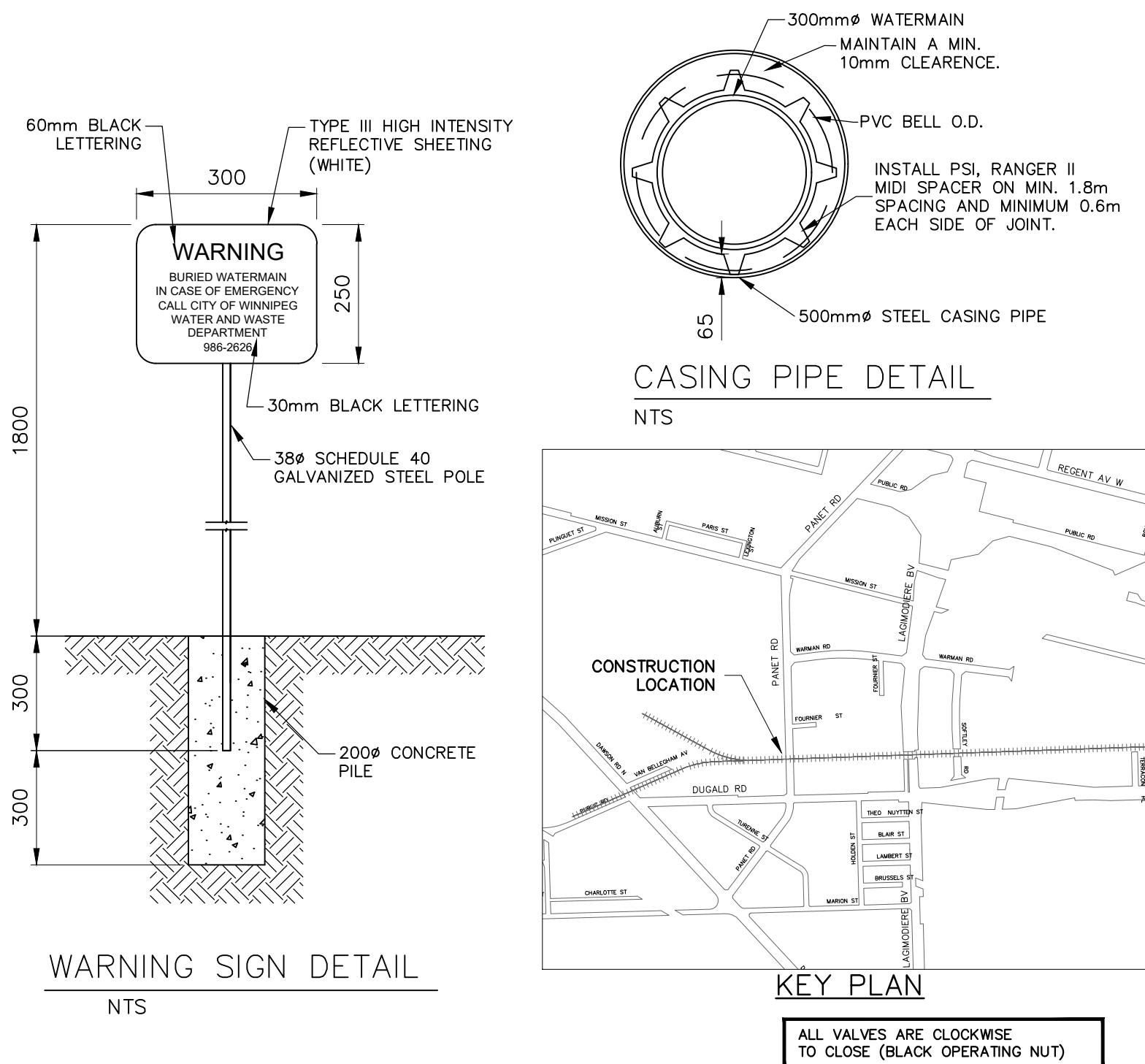
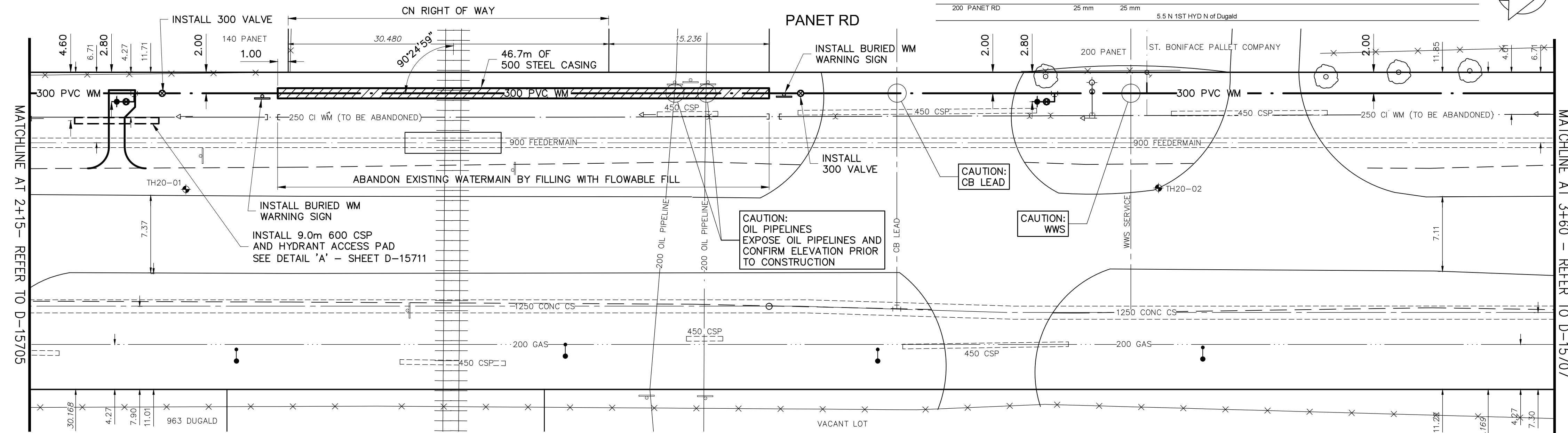
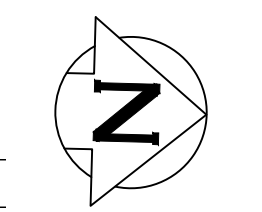
RAILWAY MILEAGE AND SUBDIVISION:	INDUSTRIAL SPUR - OLD BEACH LINE MILE 0.74, OFF MILE 149.63 CN SPRAGUE SUBDIVISION
MUNICIPAL DESCRIPTION OF ADJACENT PROPERTIES:	PANET ROAD CITY OF WINNIPEG, WATER AND WASTE DEPARTMENT.204-986-2626
NAME OF PIPELINE OWNER:	
CONTENTS TO BE HANDLED:	POTABLE WATER
MAXIMUM OPERATING PRESSURE:	450 KPa (65 psi)
MAXIMUM SURGE AND TEST PRESSURE:	1000 KPa (145 psi)
MAXIMUM OPERATING TEMPERATURE:	20°C
MINIMUM OPERATING TEMPERATURE:	4°C
PIPING MATERIALS:	CARRIER: AWWA C900 DR18 CASING: STEEL MIN. YIELD STRENGTH 241 MPa
NOMINAL DIAMETER:	300 mm
OUTSIDE DIAMETER:	335 mm
MATERIAL SPECIFICATION AND GRADE:	PVC AWWA C900 DR18
WALL THICKNESS:	18.6 mm
TYPE OF JOINT:	RUBBER GASKET BELL AND SPIGOT
COATING:	NA
LOCATION OF SHUT OFF VALVES:	1. 18.2m NORTH OF NORTH LIMIT OF R.O.W. 2. 12.0m SOUTH OF SOUTH LIMIT OF R.O.W.
METHOD OF INSTALLATION:	TRENCHLESS - CASING TO BE JACKED WITH NO SOIL REMOVAL AHEAD OF PIPE
VENTS:	NA
SEALS:	BOTH ENDS YES PERMEABLE GEOTEXTILE FABRIC
BURY:	BASE OF RAIL TO TOP OF CASING: 3.7m NOT BENEATH TRACKS: NA ROADWAY DITCHES: 2.4m BASE OF RAIL TO BOTTOM OF JACKING/RECEIVING PITS: 5.2m (S) 4.7 (N)
EXTENT OF CASING MEASURED PERPENDICULAR TO CENTERLINE OF TRACK:	46.7m
ANGLE OF PIPE / TRACK CROSSING:	90°
DIRECTION OF FLOW:	BI-DIRECTIONAL
CENTERLINE OF TRACK TO FACE OF JACKING/RECEIVING PITS:	16.4m (S) 29.7m (N)
TYPE, SIZE, AND SPACING OF INSULATORS OR SUPPORTS:	PSI RANGER II SPACERS WITH 65mm RUNNER HEIGHT 1.8m O.C.
CATHODIC PROTECTION:	NA
GEOTECHNICAL BOREHOLES:	REFER TO SOILS REPORT
SOIL TYPE:	REFER TO SOILS REPORT
BASE OF RAIL TO GROUND WATER:	REFER TO SOILS REPORT
INSTALLATION AND MAINTENANCE TO BE IN ACCORDANCE WITH:	TC-E10 AND THE LATEST EDITION OF APPLICABLE CSA STANDARD Z662

NOTE: CHAINAGES SHOWN ARE ALONG W.R. OF PANET RD

NOTE: NOTIFY CONSTRUCTION SERVICES COORDINATOR (CITY OF WINNIPEG) AT 986-4289, 48 HOURS PRIOR TO EXCAVATION NEAR FEEDERMAIN

WATER SERVICE INFORMATION

ADDRESS	SIZE (mm) MATERIAL (STREET)	SIZE (mm) MATERIAL (PROP.)	SHORT & LONG MEASUREMENT	CORP. LOCATION	REMARKS
200 PANET RD	25 mm	25 mm	5.5 N 1ST HYD N of Dugald		



- OIL PIPELINE CROSSING NOTES:**
- SUBMIT A WRITTEN WORK METHODOLOGY STATEMENT A MINIMUM OF 15 WORKING DAYS PRIOR TO PROPOSED COMMENCEMENT DATE.
 - COORDINATE WORK WITH SHELL CANADA OPERATIONS. NO WORK IS TO BE UNDERTAKEN UNLESS SHELL RIGHT OF WAY INSPECTOR IS ON SITE.
 - PRIOR TO CONSTRUCTION, EXPOSE THE EXISTING OIL PIPELINES BY SOFT DIG METHODS AND CONFIRM LOCATION AND ELEVATION.
 - NO EQUIPMENT WILL BE PERMITTED TO TRAVEL OVER OR OPERATE OVER THE OIL PIPELINES.
 - NO EXCAVATION WILL BE PERMITTED NEARER THAN 3.5 METERS FROM THE OIL PIPELINES.
 - FULLY SHORE THE SOUTH FACE OF THE RECEIVING PIT.
 - DAYLIGHT PILOT ROD WHEN 3M AWAY FROM OIL PIPELINE AND CONFIRM ELEVATION AND CLEARANCE.
 - DAYLIGHT CASING WHEN 3M AWAY FROM OIL PIPELINE AND CONFIRM ELEVATION AND CLEARANCE.

METRIC
WHOLE NUMBERS INDICATE MILLIMETRES
DECIMALIZED NUMBERS INDICATE METRES

ENGINEERS GEOSCIENTISTS MANITOBA
Certificate of Authorization
AECOM Canada Ltd.
No. 4671 Date: *ap/13/20*

REFER TO DRAWING D-15700 FOR CONSTRUCTION NOTES

WARNING
IF POWER EQUIPMENT OR EXPLOSIVES ARE TO BE USED FOR EXCAVATION ON THIS PROJECT THE CONTRACTOR MUST:
1) NOTIFY THE GAS COMPANY OF THE PROPOSED LOCATION OF EXCAVATION.
2) TAKE PRECAUTION TO AVOID DAMAGE TO GAS COMPANY INSTALLATIONS.
SEE PROVINCIAL REGULATION 210/72 FOR DETAILS

LOCATION APPROVED UNDERGROUND STRUCTURES
SUPV. U/G STRUCTURES COMMITTEE DATE
NOTE: LOCATION OF UNDERGROUND STRUCTURES AS SHOWN ARE BASED ON THE BEST INFORMATION AVAILABLE BUT NO GUARANTEE IS GIVEN THAT ALL EXISTING UTILITIES ARE SHOWN OR THAT THE GIVEN LOCATIONS ARE EXACT. CONFIRMATION OF EXISTENCE AND EXACT LOCATION OF ALL SERVICES MUST BE OBTAINED FROM THE INDIVIDUAL UTILITIES BEFORE PROCEEDING WITH CONSTRUCTION.

B.M. 33-014
ELEV. 231.421 m
360 (654380) - S.W. Cor. Mission St. & Panet Rd.,
Tabl. in 7.8 m Conc. pile, beneath Valve Box, 12.7 m I.B. on N. side of pile for location purposes only.

NO.	REVISIONS	DATE	BY
0	ISSUED FOR TENDER	20/04/03	GSK
E	ADDED OIL PIPELINE CROSSING NOTES	20/04/03	GSK
D	REVISED OIL PIPELINE CROSSING	20/03/23	GSK
C	ISSUED FOR CONSTRUCTION	20/03/18	GSK
B	ISSUED FOR REVIEW	20/03/18	GSK
A	PRELIMINARY	20/02/13	GSK

AECOM

DESIGNED BY: JP
CHECKED BY: GSK
DRAWN BY: JP
APPROVED BY: KWF
SCALE: HORIZONTAL 1:250, VERTICAL 1:50
DATE: 2020/04/03
PLOT DATE: 2020 04 03

ENGINEER'S SEAL
PROVINCE OF MANITOBA
K.W. FITCHETT
REGISTERED PROFESSIONAL ENGINEER
CONSULTANT DRAWING NUMBER: C-0006

THE CITY OF WINNIPEG
WATER AND WASTE DEPARTMENT
ENGINEERING DIVISION

2020 WATER MAIN RENEWALS
CONTRACT 6
PANET ROAD
FROM 115m N OF DUGALD ROAD TO
7m S OF FOURNIER STREET

SHEET 8 OF 13
CITY DRAWING NUMBER: D-15706