

APPENDIX 'F'

MANITOBA HYDRO DRAWINGS

NOTES :

CONSTRUCTION STANDARDS
 TO BE CONSTRUCTED IN ACCORDANCE WITH MANITOBA HYDRO DISTRIBUTION AND SUBTRANSMISSION STANDARDS, LATEST EDITION.
 NO MAJOR CHANGES SHALL BE MADE WITHOUT APPROVAL OF THE DESIGN ENGINEER OR DELEGATE.

SINGLE PHASE PAD-MOUNTED TRANSFORMER LOCATION
 SEE CD05-3 FOR RULES PERTAINING TO THE PLACEMENT OF ALL PADMOUNTED EQUIPMENT.

CUSTOMER ACCEPTANCE
 THE CUSTOMER SERVICE DEPARTMENT REPRESENTATIVE IS PROPOSED FOR OBTAINING WRITTEN CUSTOMER AGREEMENT TO THE RESPONDED INSTALLATION PRIOR TO CONSTRUCTION COMMENCEMENT.

SITE GRADING
 THE DEVELOPER IS RESPONSIBLE FOR GRADING OF THE SITE TO WITHIN +0.15M OF FINISHED GRADE PRIOR TO CONSTRUCTION COMMENCEMENT. BENCHMARKS ARE TO BE OBTAINED FROM THE DEVELOPER OR CONSULTANT.

EQUIPMENT ELEVATIONS
 THE DEVELOPER TO INDICATE ON ONE COPY OF THE MANITOBA HYDRO DRAWINGS) THE FINISHED GRADE AT ALL EQUIPMENT LOCATIONS, REFERENCED TO A BENCHMARK.

SERVICE CONDUCTOR
 SERVICE CONDUCTOR TO BE 10 AL PE/PVC/J TRIPLEX UNLESS NOTED OTHERWISE.

AUTHORITY	NOTIFIED	NOT RECD	OBTAINED
DISTRICT			
C.O.W./MUNICIPAL			
M.T.S.		X	
GAS		X	
SHAW		X	
EASEMENTS		X	
COMMUNICATIONS		X	
S.C.C.		X	
D.E.P. OF HIGHWAYS		X	

CONTACT	NAME	PHONE NUMBER	E-MAIL ADDRESS
DESIGN	SLAVA REVZIN	418-841-1373	SREVZIN@PRIMARYENG.COM
DESIGN ENGINEER	BEN MCLEOD	418-841-1373	BMCLEOD@PRIMARYENG.COM
PORTFOLIO PM	DARRIN WACH	451-2617	DWACH@HYDRO.MB.CA
ENERGY SERVICES	DARRYL STOKI	918-0341	DSTOCK@HYDRO.MB.CA
U/S CONSTRUCTION	BILL AMMEYER	981-4356	BAMMEYER@HYDRO.MB.CA
OH CONSTRUCTION	WAYNE RIELAND	771-5212	WRIELAND@HYDRO.MB.CA
HYDRO GAS			
SHAW			
M.T.S.			
CUSTOMER REP			
DISTRICT ENG TECH	GEORGE WEDDALL	360-7451	GWEDDALL@HYDRO.MB.CA

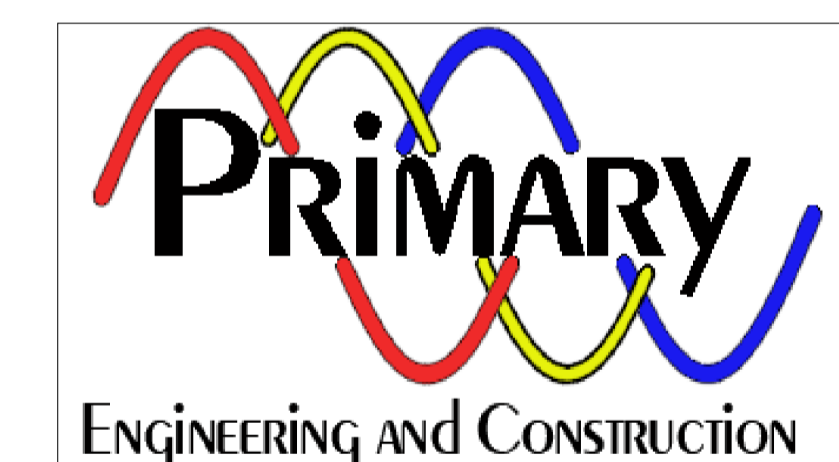
INSTALLED			
Quantity	Fixture Type	Wattage	Pole Type
9	LED	90	EXCLUSIVE
6	LED	90	EXCLUSIVE
3	LED	150	EXCLUSIVE
1	LED	209	EXCLUSIVE
1	LED	90	SHARED

REMOVED			
Quantity	Fixture Type	Wattage	Pole Type
7	LED	90	EXCLUSIVE
3	LED	90	EXCLUSIVE
9	LED	150	EXCLUSIVE
1	LED	209	EXCLUSIVE
1	LED	60	SHARED

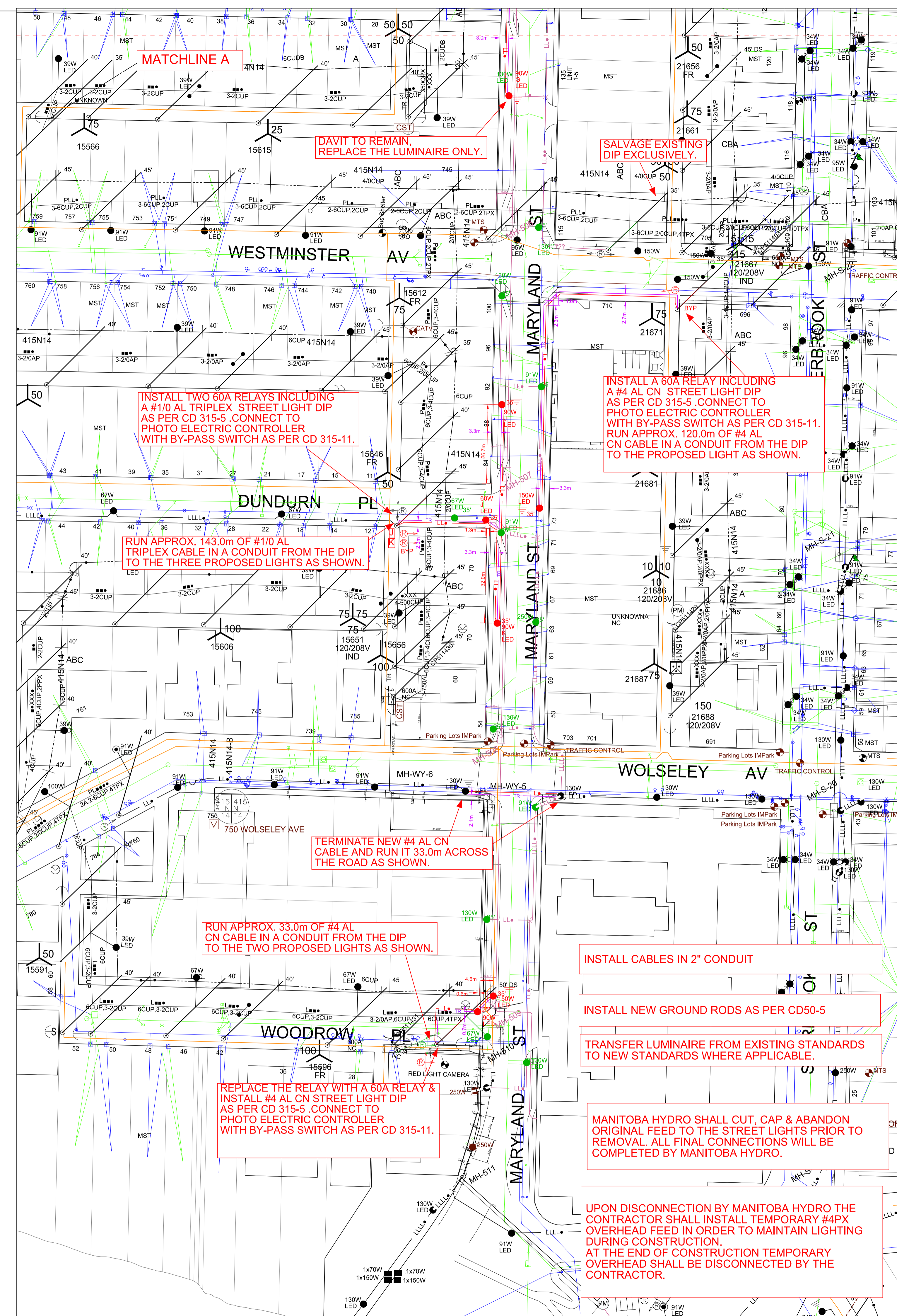
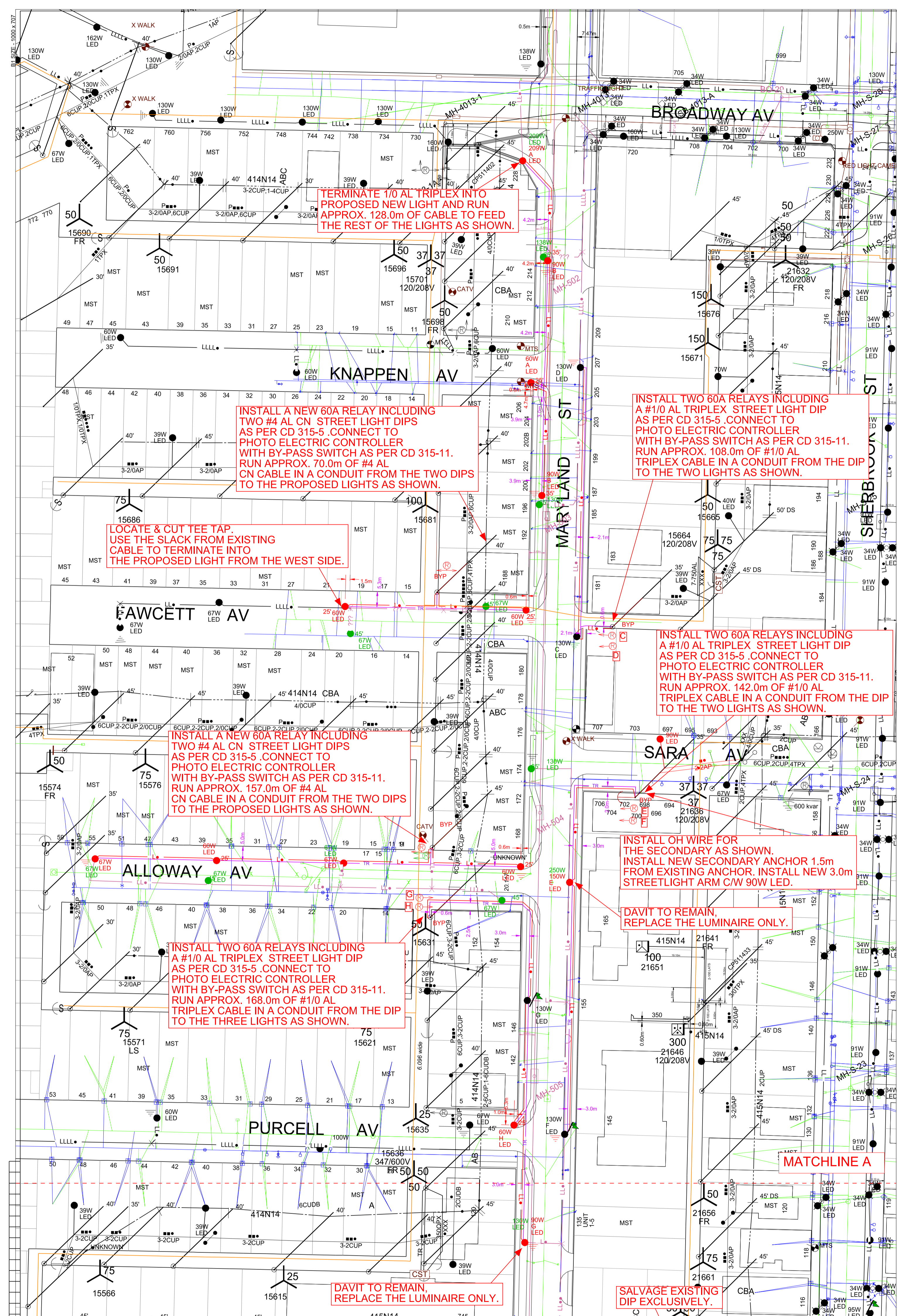
LED CONVERSION CHART		
HPS WATTAGE	EQUIVALENT LED WATTAGE	CATALOG NUMBER
100	73	ERS10C3E1540
150	95	ERS10C3E1740
250	138	ERS120C4E1540
400	209	ERS30S3E1540

"STREETLIGHT PLACEMENT FOLLOWS IES STANDARDS AND THEY ARE PLACED ACCORDINGLY. USING DRIVEWAY LOCATIONS PROVIDED BY THE DEVELOPER. DRIVEWAY LOCATIONS THAT HAVE BEEN CHANGED AFTER THE DESIGN HAS BEEN SEALED RESULTING IN A CONFLICT BETWEEN STREETLIGHTS AND THE DRIVEWAY ARE THE RESPONSIBILITY OF THE DEVELOPER TO RECOVER THE COSTS ASSOCIATED WITH RELOCATING THE STREETLIGHTS."

BANNERS AND ASSOCIATED HARDWARE TO BE REMOVED AND RETURNED TO THE CITY OF WINNIPEG, 1277 PACIFIC AVENUE WITH AN ITEMIZED LIST AND QUANTITIES.



INFORMATION PERTAINING TO THE DATE, TYPE AND LOCATION OF MANITOBA HYDRO FACILITIES AND REVISIONS IS AVAILABLE TO THE PUBLIC UPON REQUEST. FOR THE PURPOSES OF ANY ACTIVITY BEING CONDUCTED AT OR NEAR THE IDENTIFIED HYDRO FACILITIES, ALL LOCATIONS AND EQUIPMENT MUST BE VISITED BY APPROPRIATE HYDRO PERSONNEL PRIOR TO ANY PHYSICAL ACTIVITY BEING UNDERTAKEN AT A NEAR HYDRO INSTALLATION.



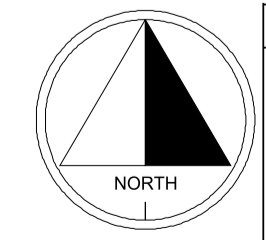
PROPOSED SEQUENCE OF CONSTRUCTION:
 -MH STAFF SHALL DISCONNECT AND ISOLATE THE EXISTING STREET LIGHT POLES TO BE REPLACED.
 -CONTRACTOR TO INSTALL TEMPORARY OH FEEDS BETWEEN EXISTING POLES.
 -MH STAFF TO INSTALL FINAL DROP FROM EXISTING POLE TO SOURCE AND ENERGIZE.
 -CONTRACTOR TO INSTALL NEW POLES, UNDERGROUND STREET LIGHT CABLE BETWEEN POLES, GROUND RODS, RELAYS, AND BOTTOM SECTION OF CABLE GUARD AT DIP (IF APPLICABLE) AND TERMINATE IN HAND HOLE.
 -MH STAFF TO DISCONNECT AND ISOLATE TEMPORARY OH FEED TO EXISTING POLES, AS WELL AS COMMON AND ENERGIZE NEW POLES FROM NEW UNDERGROUND SOURCE.
 -CONTRACTOR TO REMOVE OH FEEDS AND REMOVE EXISTING POLES.

**COW TENDER
20-R-XX**

PRELIMINARY
 NOT TO BE USED FOR CONSTRUCTION

REEL NUMBER	MANUFACTURER	MANUFACTURE DATE

CONTACT "CLICK BEFORE YOU DIG MANITOBA" AT
ClickBeforeYouDigMB.com
THREE FULL WORKING DAYS
 PRIOR TO CONSTRUCTION FOR LOCATION OF EXISTING WATER, WASTEWATER, LAND DRAINAGE UTILITIES AND MANITOBA HYDRO UTILITIES



DATE	REVISIONS	BY	CHKD.	APP.

DRAWING NUMBER	REFERENCE DRAWINGS	DRAWN	CHECK
	WINNIPEG UGS APPROVAL	SR	

SCALE	DATE
1:750	2020-04-01

AREA NUMBER	MANITOBA HYDRO DISTRIBUTION ENGINEERING
5201	WOF P:33314 NETWORK # 4306185
STATION NUMBER	CSC: CITY CENTRE
FEDDER NUMBER	CUSTOMER SERVICE PROJECT
SYSTEM VOLTAGE	MARYLAND RECONSTRUCTION
120/240V	REPLACE STREET LIGHTS ON MARYLAND
	BETWEEN BROADWAY TO MARYLAND BRIDGE