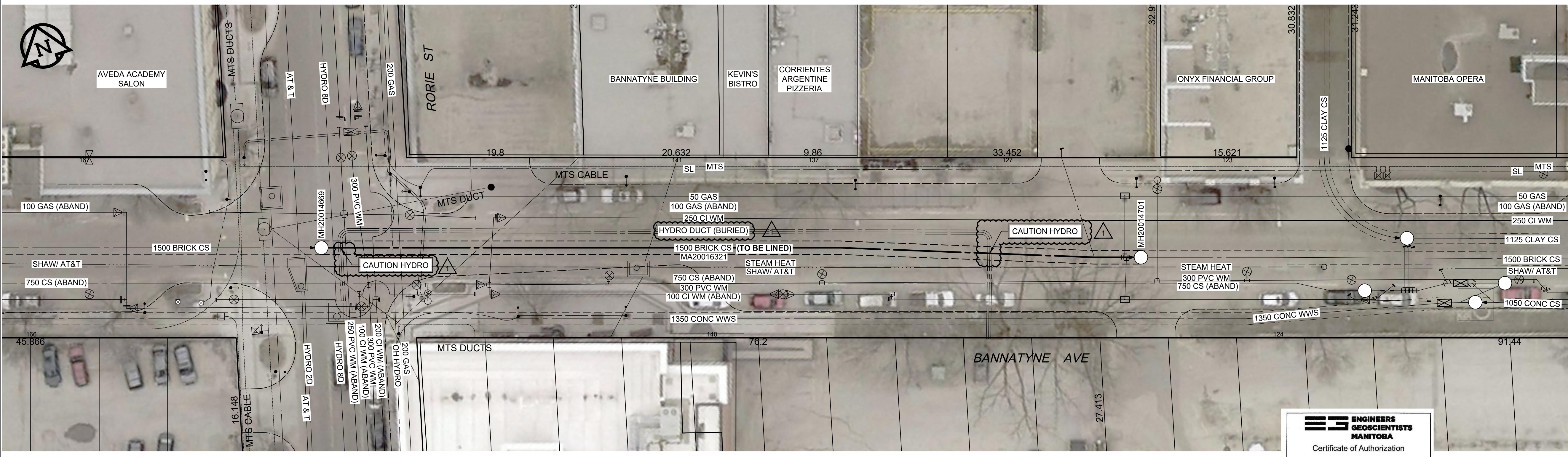
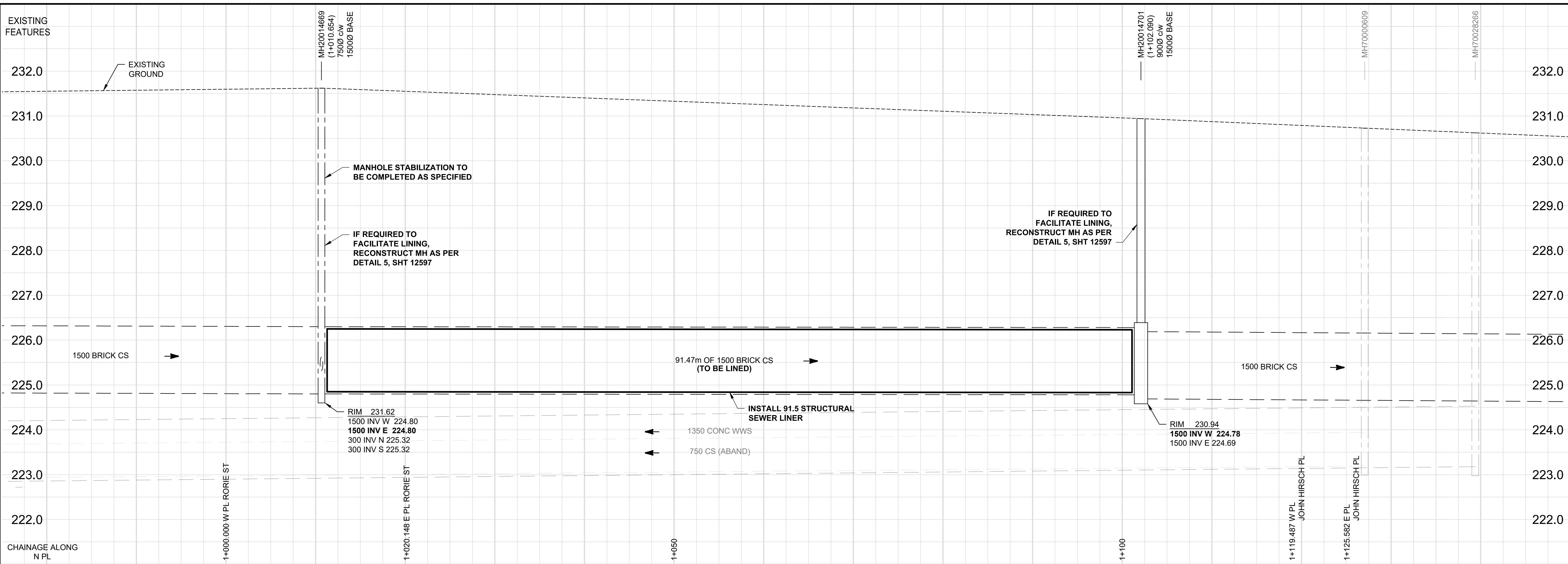


D SIZE 22" x 34" (559mm x 864mm)

PLOT: 1/18/2020 9:47:04 AM

AECOM FILE NAME: 60622950-SHT-00-0000-C-1001.dwg Saved By: ccooperkl



**SEWER JUNCTION INFORMATION**

SERVICE COUNT	STATION	CLOCK
1	1010.754	9
2	1010.754	3
3	1015.104	2
4	1017.154	3
5	1024.754	3
6	1024.754	2
7	1032.754	3
8	1041.054	3
9	1041.054	9
10	1043.454	12
11	1048.484	9
12	1048.484	3
13	1056.554	3
14	1056.554	9
15	1064.454	3
16	1064.454	9
17	1072.754	3
18	1072.754	9
19	1076.454	11
20	1079.354	3
21	1079.354	9
22	1087.954	3
23	1087.954	9
24	1095.454	9
25	1094.454	3

**SEWER REHABILITATION NOTES:**

- INSTALL ONE OF THE FOLLOWING REHABILITATION SYSTEMS:
  - CIPP
  - GRP
  - CCCP
- EXISTING SEWER DETERIORATION STATE: PARTIALLY DETERIORATED
- MINIMUM POST LINING DIMENSIONS: 1309mm
- EXTEND REHABILITATION SYSTEM TO THE EDGE OF THE EXISTING MANHOLE OPENINGS AS SHOWN IN DETAIL 2, SHEET 12597
- CIPP, GRP AND CCCP REHABILITATION MAY UTILIZE A PIPE ACCESS SHAFT AT EITHER OF THE EXISTING MANHOLES OR AT A MID POINT.
- SEE PIPELINE CLOSURE AND MANHOLE RECONSTRUCTION DETAILS ON SHEET 12597

**GENERAL CONSTRUCTION NOTES:**

- RESTORE SITE TO EXISTING CONDITIONS UPON COMPLETION OF WORK
- TRAFFIC CONTROL
  - REGIONAL STREET LANE CLOSURE REQUIRED: NO
  - IMPACTED REGIONAL STREET: N/A
  - BUS ROUTE
  - RESIDENTIAL STREET RESTRICTIONS APPLY

**METRIC**

WHOLE NUMBERS INDICATE MILLIMETRES  
DECIMALIZED NUMBERS INDICATE METRES

EXISTING	LEGEND - PLAN	NEW	EXISTING	LEGEND - PLAN	NEW	EXISTING	LEGEND - PROFILE	NEW
150 WM	WATERMAIN	150 WM	150 WM	WATERMAIN	150 WM	150 WM	WATERMAIN	150 WM
300 LDS	LAND DRAINAGE SEWER	300 LDS	300 LDS	LAND DRAINAGE SEWER	300 LDS	300 LDS	LAND DRAINAGE SEWER	300 LDS
250 WWS	WASTE WATER SEWER	250 WWS	250 WWS	WASTE WATER SEWER	250 WWS	250 WWS	WASTE WATER SEWER	250 WWS
○	MANHOLE	●	○	MANHOLE	●	○	MANHOLE	●
□	CATCH BASIN	■	□	CATCH BASIN	■	□	CATCH BASIN	■
△	CURB INLET	▲	△	CURB INLET	▲	△	CURB INLET	▲
▭	CULVERT	▭	▭	CULVERT	▭	▭	CULVERT	▭
—	PIPE ABANDONMENTS	—	—	PIPE ABANDONMENTS	—	—	PIPE ABANDONMENTS	—
+	SURVEY BAR	+	+	SURVEY BAR	+	+	SURVEY BAR	+
○	HYDRANT	○	○	HYDRANT	○	○	HYDRANT	○
○	VALVE	○	○	VALVE	○	○	VALVE	○
○	ANODE	○	○	ANODE	○	○	ANODE	○
○	MTS	○	○	MTS	○	○	MTS	○
○	GAS	○	○	GAS	○	○	GAS	○
○	TESTHOLE	○	○	TESTHOLE	○	○	TESTHOLE	○
○	LAMP STANDARD	○	○	LAMP STANDARD	○	○	LAMP STANDARD	○
○	TREE	○	○	TREE	○	○	TREE	○
○	REDUCER COUPLING	○	○	REDUCER COUPLING	○	○	REDUCER COUPLING	○
○	HYDRO	○	○	HYDRO	○	○	HYDRO	○
○	PAVEMENT CROWN	○	○	PAVEMENT CROWN	○	○	PAVEMENT CROWN	○
○	N/W PROPERTY LINE	○	○	N/W PROPERTY LINE	○	○	N/W PROPERTY LINE	○
○	S/E PROPERTY LINE	○	○	S/E PROPERTY LINE	○	○	S/E PROPERTY LINE	○
○	N/W GUTTER	○	○	N/W GUTTER	○	○	N/W GUTTER	○
○	S/E GUTTER	○	○	S/E GUTTER	○	○	S/E GUTTER	○

**LOCATION APPROVED**  
UNDERGROUND STRUCTURES

SUPR. U/G STRUCTURES DATE COMMITTEE

NOTE:  
LOCATION OF UNDERGROUND STRUCTURES AS SHOWN ARE BASED ON THE BEST INFORMATION AVAILABLE. BUT NO GUARANTEE IS GIVEN THAT ALL EXISTING UTILITIES ARE SHOWN OR THAT THE GIVEN LOCATIONS ARE EXACT. CONFIRMATION OF EXISTENCE AND EXACT LOCATION OF ALL SERVICES MUST BE OBTAINED FROM THE INDIVIDUAL UTILITIES BEFORE PROCEEDING WITH CONSTRUCTION.

NO.	REVISIONS	DATE	BY
1	REVISED FOR ADDENDUM 2	20/11/17	KLC
0	ISSUED FOR CONSTRUCTION	20/10/16	KLC

**AECOM**

DESIGNED BY: TJB  
CHECKED BY: CCM

DRAWN BY: KLC  
APPROVED BY: KWF

HOR. SCALE: 1:250  
VERT. SCALE: 1:50

RELEASED FOR CONSTRUCTION  
ORIGINAL SIGNED BY: STACY COURNOYER  
DATE: OCT. 16/2020

ENGINEERS  
GEOSCIENTISTS  
MANITOBA

Certificate of Authorization  
AECOM Canada Ltd.  
No. 4671 Date: Nov 17/20

**THE CITY OF WINNIPEG**  
WATER AND WASTE DEPARTMENT

2020 TRENCHLESS REHABILITATION OF  
NON-CIRCULAR COMBINED SEWERS  
CONTRACT 2

PLAN / PROFILE  
BANNATYNE AVENUE  
RORIE STREET TO JOHN HIRSCH PLACE

SHEET 1 OF 6  
CITY DRAWING NUMBER  
12592

TENDER NO. 459-2020