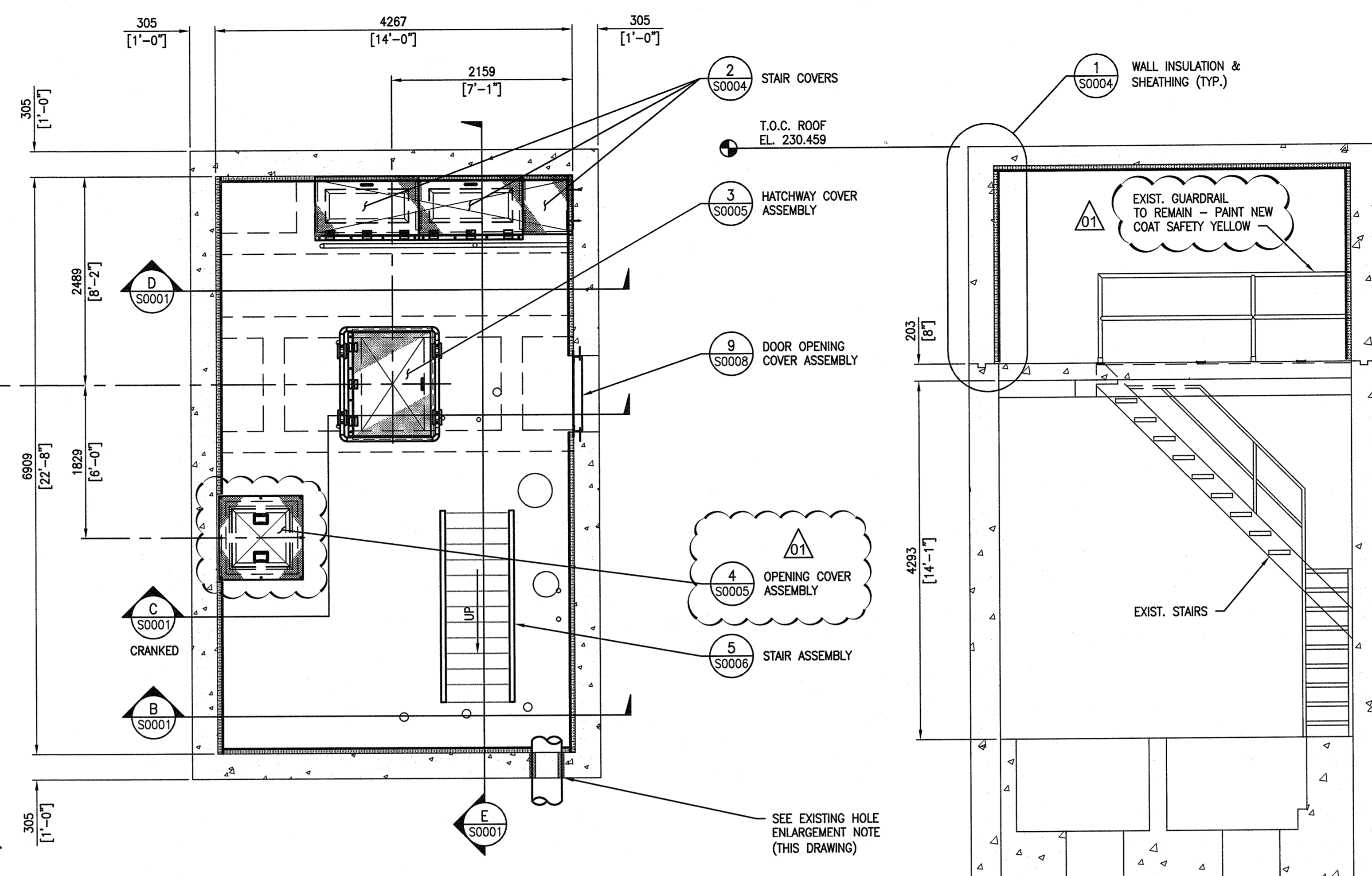


COMMINUTOR CHAMBER ROOF PLAN @ T.O.C. 230.459
SCALE: 1 : 40

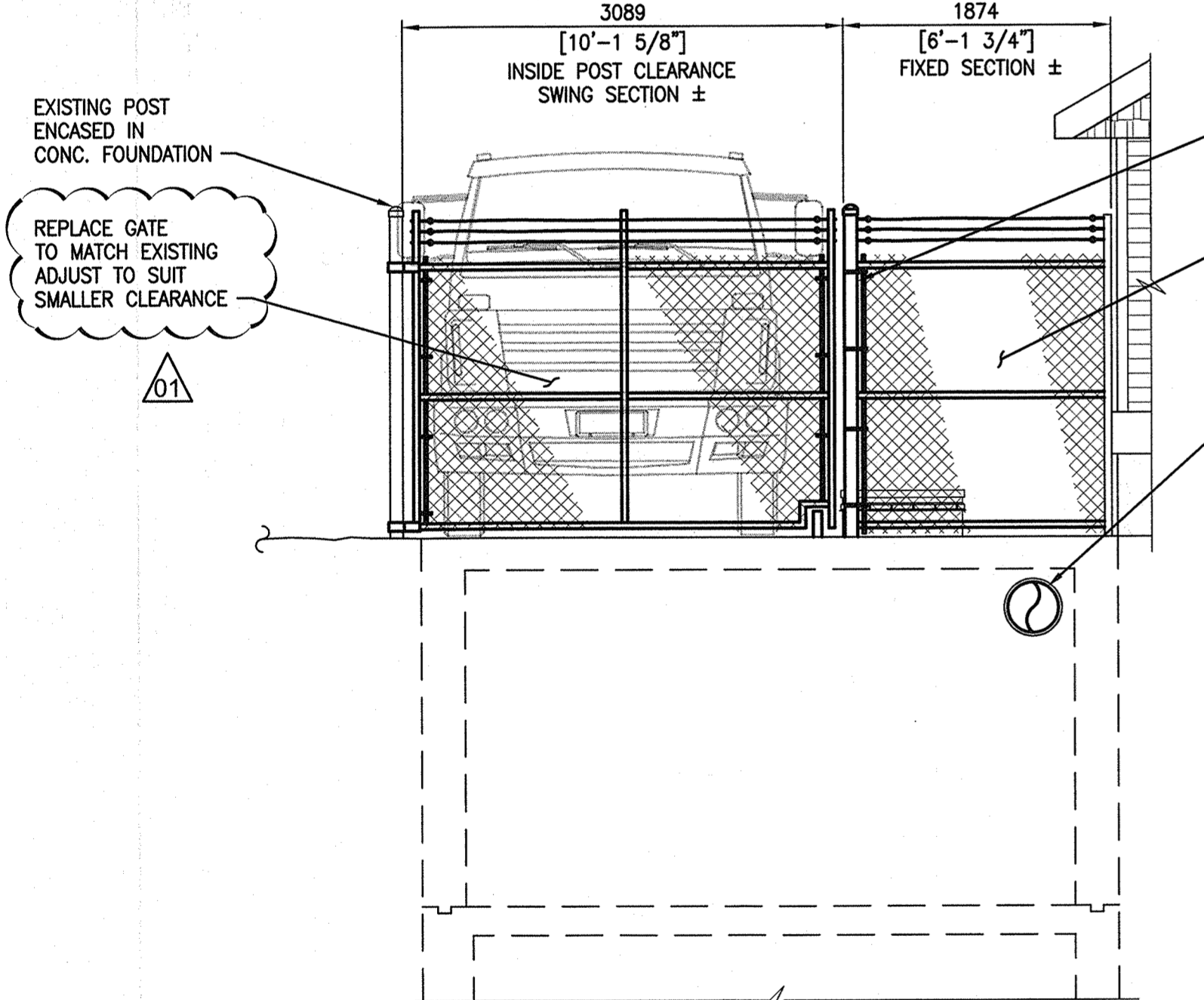


COMMINUTOR CHAMBER FLOOR PLAN @ T.O.C. 227.838
SCALE: 1 : 40

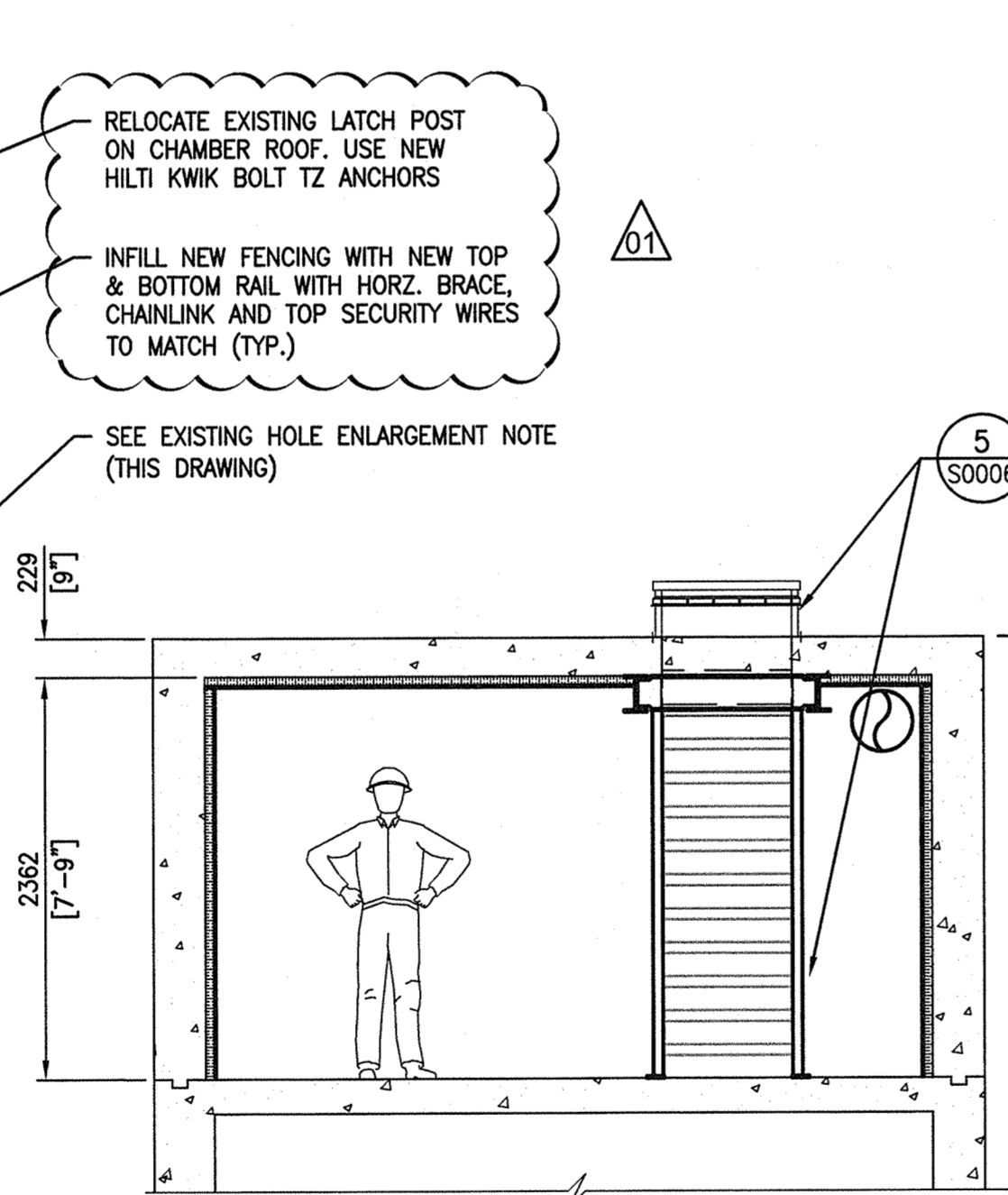
- GENERAL NOTES:**
1. THESE NOTES ARE TO BE READ IN CONJUNCTION WITH THE PROJECT SPECIFICATION.
 2. THESE NEW INSTALLATIONS HAVE BEEN DESIGNED IN ACCORDANCE WITH THE NATIONAL BUILDING CODE OF CANADA 2005 AND AS REVISED BY THE MANITOBA BUILDINGS AND MOBILE HOMES ACT (C.C.S.M.C. B93), MR 118, REGULATION 31 AS AMENDED (MBC).
 3. REFERENCE OR COMPLIANCE WITH A STANDARD SHALL MEAN REFERENCE TO THE CURRENT EDITION OF THAT STANDARD AS WELL AS SUPPLEMENTS AND ALL DOCUMENTS REFERENCED THEREIN UNLESS REFERENCE TO A SPECIFIC DOCUMENT VERSION IS MADE.
 4. THE CONTRACTOR SHALL COMPLY WITH ALL HEALTH AND SAFETY REQUIREMENTS AND REGULATIONS FOR THE PROVINCE OF MANITOBA.
 5. THE DRAWINGS SHOW THE COMPLETED STRUCTURAL SYSTEM; THEY DO NOT SHOW WHICH MAY BE NECESSARY FOR SAFETY DURING CONSTRUCTION. THE CONTRACTOR IS RESPONSIBLE FOR SAFETY IN AND AROUND THE JOB SITE.
 6. ALL WORK IN THE FIELD TO INCORPORATE PROPER SAFETY PRECAUTIONS TO ENSURE THE SAFETY OF THE WORKERS AND PREVENT DAMAGE TO ALL EXISTING EQUIPMENT AND STRUCTURES.
 7. DO NOT SCALE DRAWINGS
 8. VERIFY ALL DIMENSIONS, ELEVATIONS AND EXTENT OF WORK WITH THE DRAWINGS AND REPORT ANY DISCREPANCIES OR CONFLICTS TO THE CONTRACT ADMINISTRATOR PRIOR TO PROCEEDING WITH CONSTRUCTION. DO NOT DIMENSION FROM ELECTRONIC DRAWINGS. REWORK OF ITEMS FABRICATED PRIOR TO IDENTIFICATION OF DISCREPANCIES AND/OR CONFLICTS SHALL BE AT NO ADDITIONAL COST TO THE CITY.
 9. LOCATE SERVICES AND PROTECT THEM AT ALL TIMES DURING CONSTRUCTION.
 10. STRUCTURAL INTEGRITY OF EXISTING STRUCTURES TO BE MAINTAINED DURING CONSTRUCTION.
 11. REPORT ANY UNSOUND CONDITIONS OBSERVED OR CREATED IMMEDIATELY TO THE CONTRACT ADMINISTRATOR.
 12. MODIFICATIONS, ALTERATIONS, OR SUBSTITUTIONS MUST BE AUTHORIZED IN WRITING BY THE CONTRACT ADMINISTRATOR PRIOR TO ANY FABRICATION OR ERECTION.
 13. ALL CONTRACTOR MEANS AND METHODS, INCLUDING TEMPORARY SCAFFOLDING SHALL BE ERECTED AND REMOVED BY AN APPROPRIATELY EXPERIENCED INSTALLATION CONTRACTOR IN ACCORDANCE WITH MANITOBA REGULATION 217. SCAFFOLDING TO BE DESIGNED AND APPROVED FOR USE IN ACCORDANCE WITH 217.
 14. SUBMIT SHOP DRAWINGS FOR REVIEW.
 15. SEE DRAWING 1-0173F-S0002 FOR STRUCTURAL NOTES.

NOTE: EXISTING HOLE ENLARGEMENT

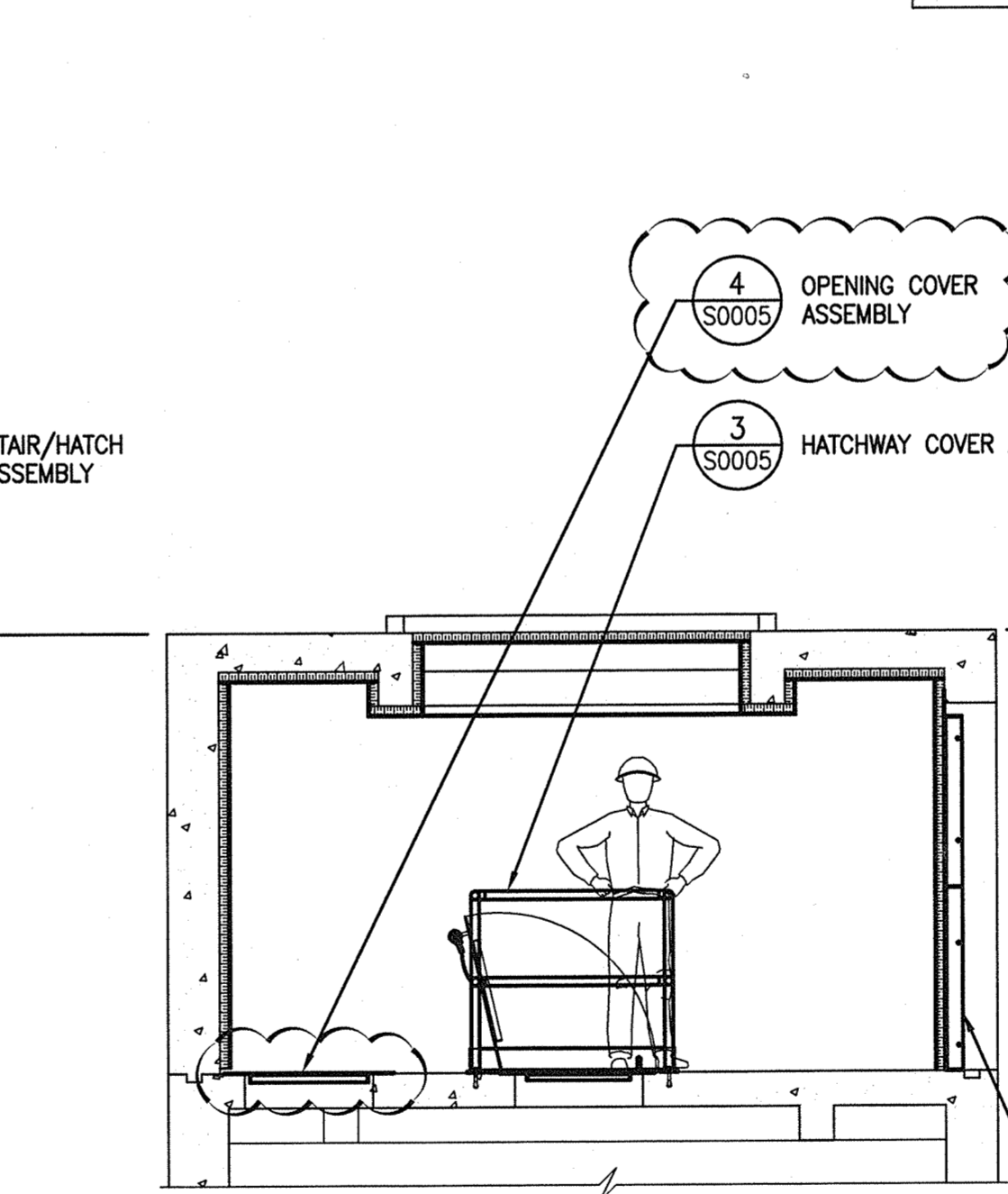
FIELD LOCATE AND MARK REINFORCING IN REGION OF EXISTING HOLE, BOTH FACES OF CONCRETE. NOTIFY ENGINEER AND ALLOW FIELD REVIEW OF MARKINGS PRIOR TO CUTTING NEW LARGER HOLE FOR 356 (14") Ø PIPE + 1" TO 2". FIELD ADJUST HOLE LOCATION AS INDICATED BY ENGINEER TO MINIMIZE CUTTING EXISTING REINFORCING. USE WALL-MOUNTED CONCRETE CORE DRILL OR SIMILAR TO PRODUCE LARGER HOLE, TAKING CARE NOT TO OVERSIZE HOLE LARGER THAN INDICATED. USE A MATCHING LINK SEAL AND INSTALL PER MANUFACTURE'S INSTRUCTIONS. SEE MECHANICAL DRAWINGS 1-0173F-M0002 & M0003 FOR ARRANGEMENT.



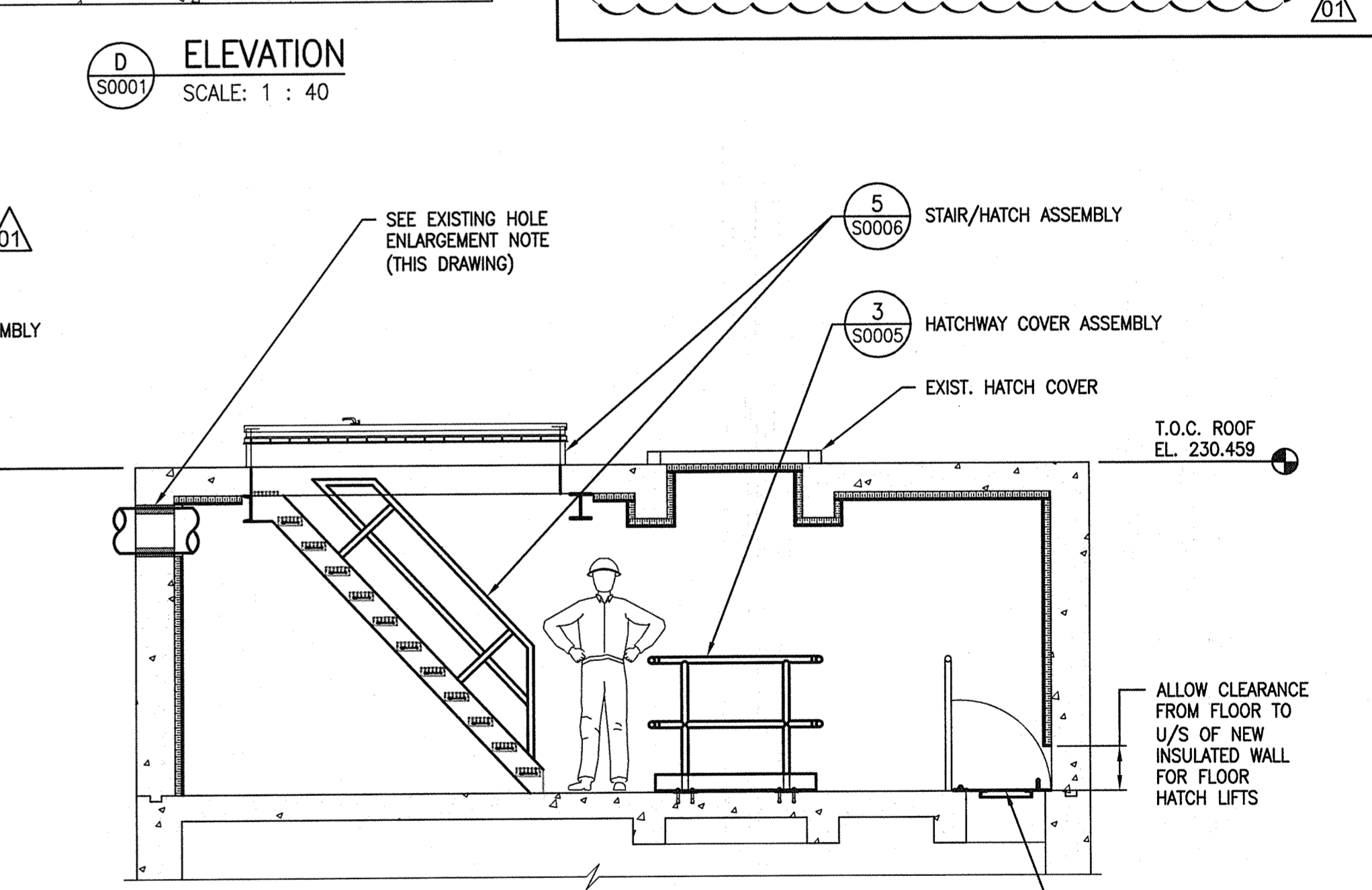
A PARTIAL ELEVATION
SCALE: 1 : 40



B PARTIAL ELEVATION
SCALE: 1 : 40
- DEPTH VARIES -

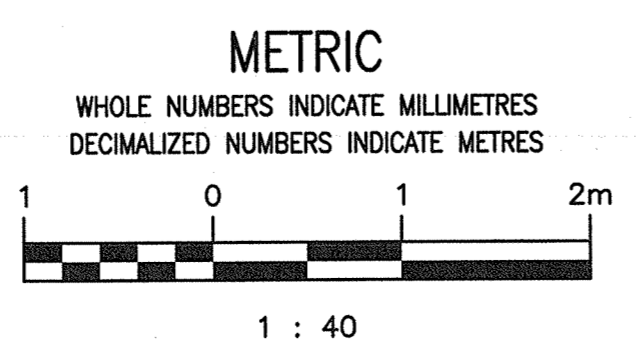


C PARTIAL ELEVATION
SCALE: 1 : 40
- DEPTH VARIES -

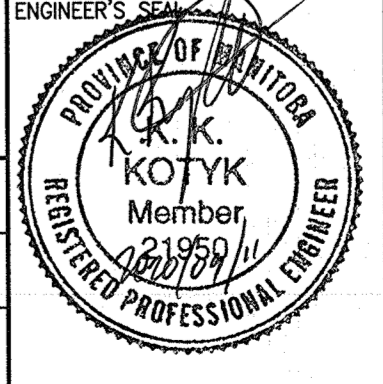


D PARTIAL ELEVATION
SCALE: 1 : 40
- DEPTH VARIES -

DRAWING NUMBER	REFERENCE DRAWINGS
LD-2960	POLSON FLOOD PUMPING STATION - CONCRETE SLAB REPAIR
LD-2644	POLSON FLOOD PUMPING STATION - ACCESS HATCH
LD-2643	POLSON FLOOD PUMPING STATION - FLAPGATE INSTALLATION
5-SD-4	POLSON AVENUE PUMPING STATION - SHEET 2
5-SD-4	POLSON AVENUE PUMPING STATION - SHEET 1
512	POLSON COMMINUTOR STATION - REINFORCING STEEL DETAILS
511	POLSON COMMINUTOR STATION - CONSTRUCTION DETAILS



NO.	REVISIONS	DATE	DESIGN	CHECK
01	ISSUED FOR CONSTRUCTION	2020/09/11	K.K.	B.C.
00	ISSUED FOR TENDER, BID OP 567-2020	2020/08/19	K.K.	B.C.



SNC-LAVALIN INC.
148 Nature Park Way
Winnipeg, MB, Canada R3P 0X7
204-786-8080

DESIGNED BY: K. KOTYK
DRAWN BY: B. DICKSON
SCALE: 1 : 40

CHECKED BY: B. CLEVEN
APPROVED BY: B. CLEVEN
ISSUED FOR CONSTRUCTION BY: K. ZUREK
DATE: 2020/05/25
DATE: 2020/09/02

THE CITY OF WINNIPEG
WATER AND WASTE DEPARTMENT

POLSON FLOOD PUMPING STATION
2020 UPGRADES
STRUCTURAL MODIFICATIONS - COMMINUTOR CHAMBER
PLANS, ELEVATIONS & NOTES

CITY DRAWING NUMBER: 1-0173F-S0001
SHEET: 001
REV: 01
SIZE: A1