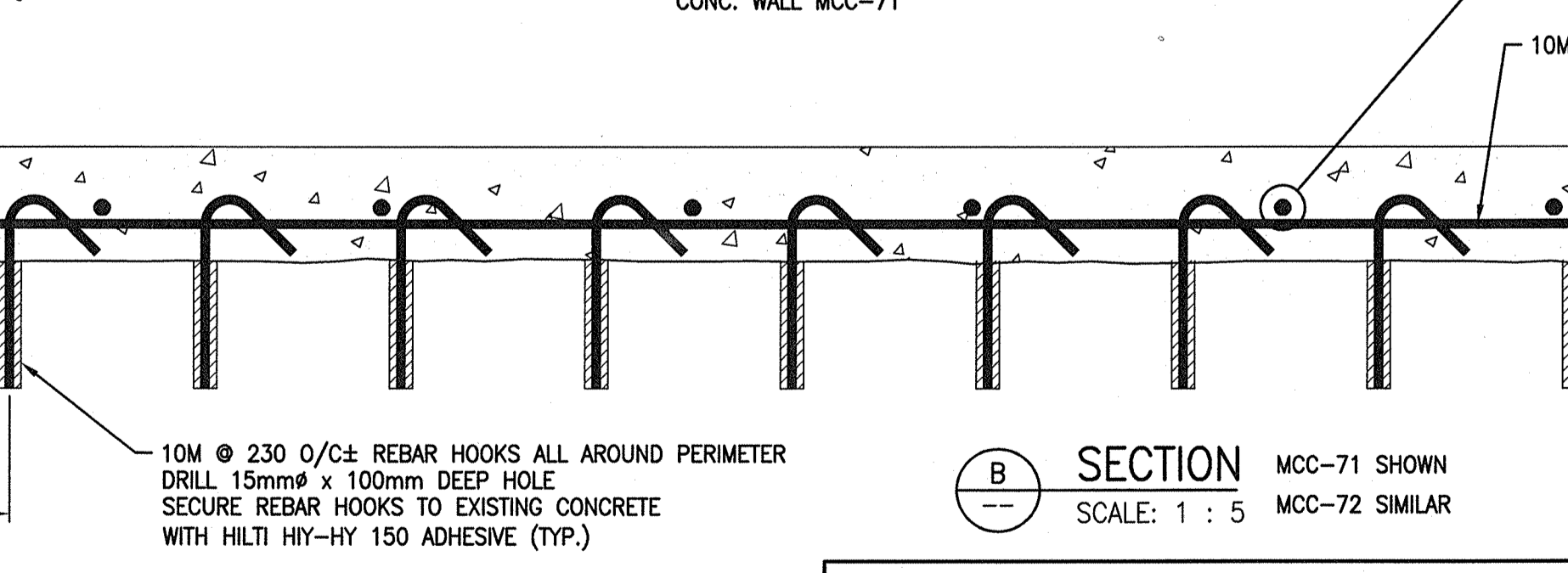
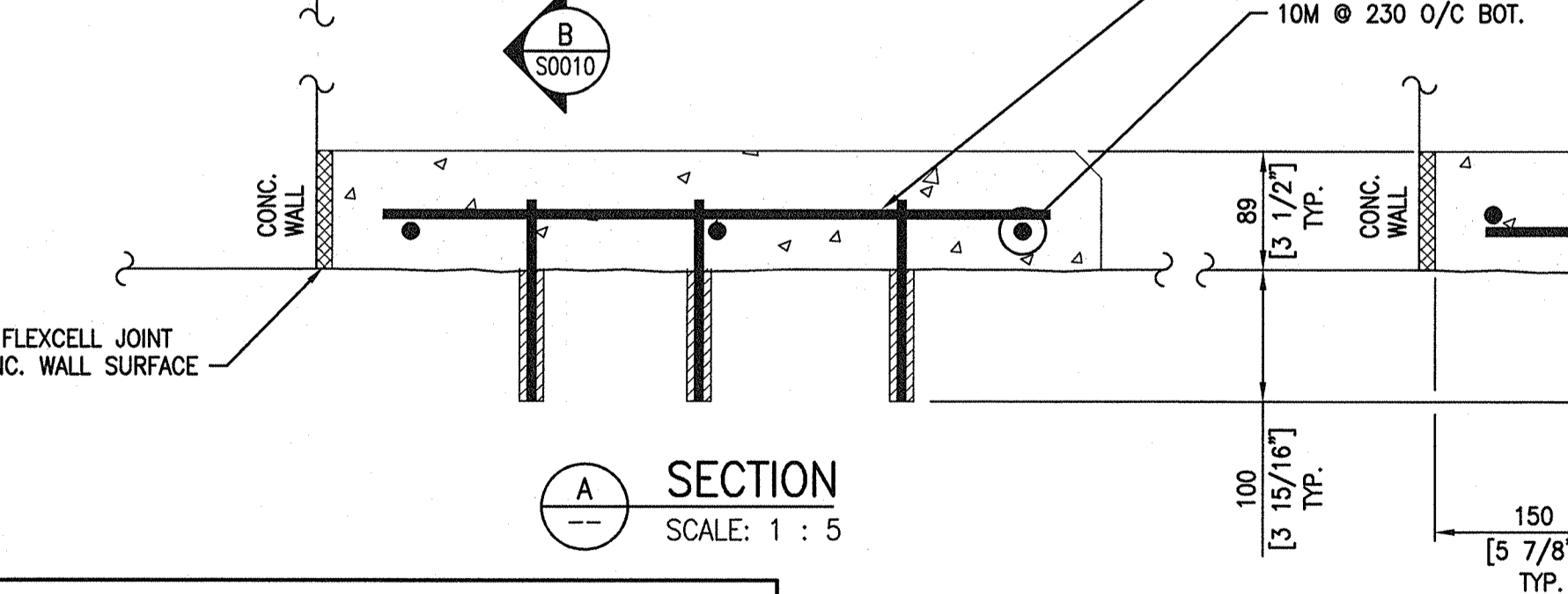
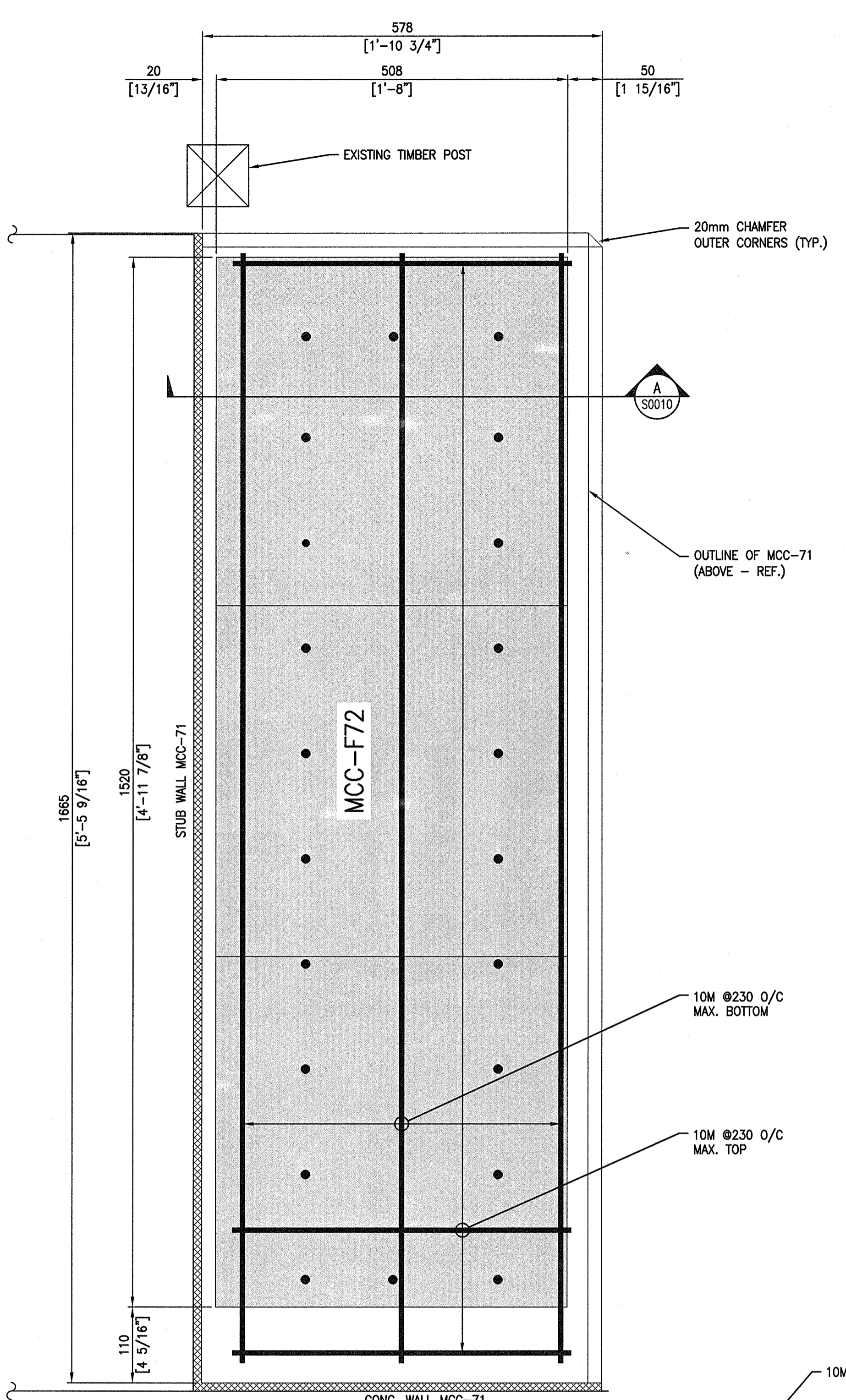
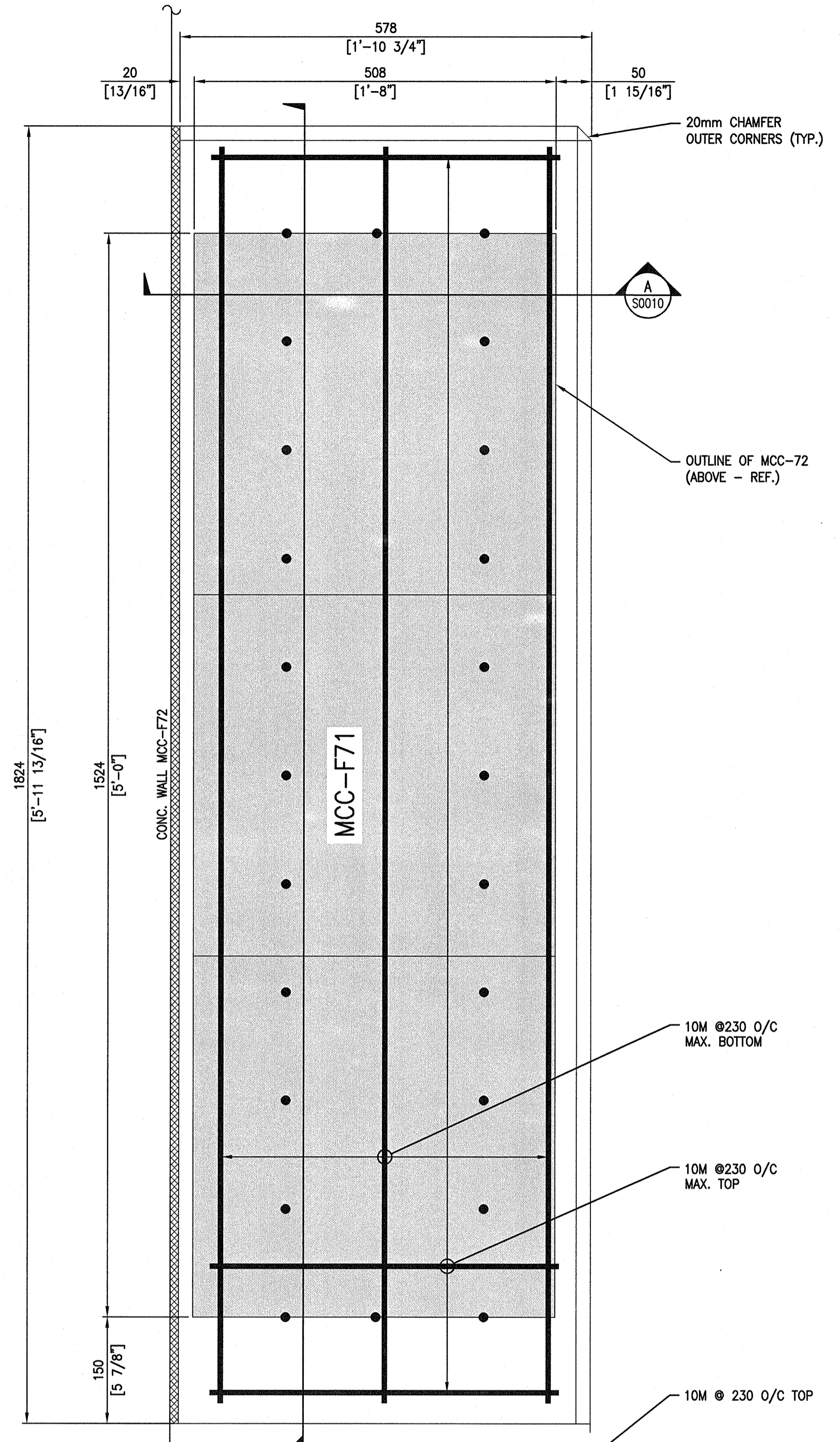
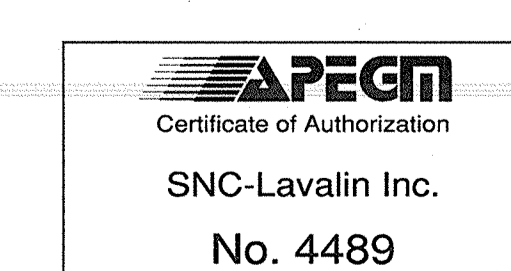
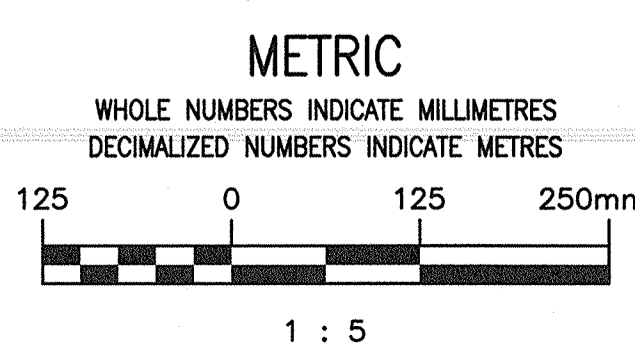


- BOTH PLANS -



**SECTION A-A**  
SCALE: 1 : 5

**SECTION B-B**  
SCALE: 1 : 5  
MCC-71 SHOWN  
MCC-72 SIMILAR



**8** **DETAIL - MCC-F71 & MCC\_F72 HOUSEKEEPING PADS**  
SCALE: 1 : 5

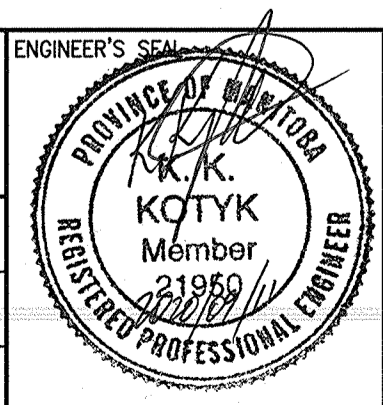
PROVIDE 100mm MIN. EDGE DISTANCE TO EQUIPMENT ANCHORS, WHICH ARE TO BE INSTALLED IN ACCORDANCE WITH THE EQUIPMENT SUPPLIER'S RECOMMENDATIONS.

ROUGHEN SURFACE AND APPLY BONDING AGENT (TYP.)

- NOTES:**
- SEE DRAWING 1-0173F-S0001 FOR GENERAL NOTES.
  - SEE DRAWING 1-0173F-S0002 FOR STRUCTURAL NOTES.
- DESIGN LOAD:**
- THE HOUSEKEEPING PAD SHOWN IS NOT STRUCTURAL. THE SUPPORTING STRUCTURE UPON WHICH THE HOUSEKEEPING PAD IS INSTALLED SHALL BE CAPABLE OF SUPPORTING ALL LOADS AND DYNAMIC EFFECTS.
  - THE HOUSEKEEPING PAD HAS NOT BEEN DESIGNED FOR CORROSIVE ENVIRONMENTS.
- CONCRETE:**
- ALL MATERIALS AND WORKMANSHIP SHALL CONFORM TO CSA STANDARD CSA A23.1 AND CSA A23.2 INCLUDING HEATING/HOARDING AND REQUIREMENTS FOR COLD WEATHER CONCRETING.
  - CONCRETE SHALL BE READY MIXED, CONFORMING TO CSA A23.1 (ALTERNATIVE 1), AND AS NOTED HEREIN:  
CEMENT TYPE: GU  
CONCRETE COMPRESSIVE STRENGTH @ 28 DAYS: 30 MPa  
MAXIMUM AGGREGATE SIZE: 20 MM  
MAXIMUM SLUMP: 100 MM  
AIR CONTENT: 0% TO 3%  
W/C RATIO: 0.45 MAXIMUM  
CLASS OF SULPHATE AND CHLORIDE EXPOSURE: S-3 AND C-3
  - REINFORCING STEEL SHALL BE NEW BILLET GRADE STEEL MEETING THE REQUIREMENT OF CSA G30.18, GRADE 400.
  - SUPPORT REINFORCING STEEL ON SUFFICIENT SUPPORT CHAIRS TO MAINTAIN CONCRETE COVER OF 50mm.
  - REMOVE ALL LOOSE AND DELETERIOUS MATERIAL FROM REINFORCING STEEL.
  - TOLERANCES SHALL BE AS STIPULATED IN ACI 315.
  - SATURATE THE CONCRETE SURFACE FOR ONE HOUR PRIOR TO APPLYING THE BONDED CONCRETE TOPPING. PROVIDE A SATURATED SURFACE DRY CONDITION.
  - APPLY LATEX BONDING AGENT IN ACCORDANCE WITH MANUFACTURER'S PRINTED INSTRUCTIONS. BONDING AGENT TO BE DARAWELD 'C'.
  - PROVIDE A WET 'BURLAP' CURE FOR 7 DAYS MIN.
  - EXPOSED CONCRETE SHALL BE SEALED WITH MEADOWS SEALTIGHT CS-309.
  - ALL WORK TO BE EXECUTED IN A NEAT WORKMANLIKE MANNER.
- REFERENCE:**
- REFER TO ELECTRICAL DRAWINGS FOR LOCATION AND DIMENSIONS OF HOUSEKEEPING PAD(S).

LD-2960	POLSON FLOOD PUMPING STATION - CONCRETE SLAB REPAIR
LD-2644	POLSON FLOOD PUMPING STATION - ACCESS HATCH
LD-2643	POLSON FLOOD PUMPING STATION - FLAPGATE INSTALLATION
5-SD-4	POLSON AVENUE PUMPING STATION - SHEET 2
5-SD-4	POLSON AVENUE PUMPING STATION - SHEET 1
512	POLSON COMMUNOTOR STATION - REINFORCING STEEL DETAILS
511	POLSON COMMUNOTOR STATION - CONSTRUCTION DETAILS
DRAWING NUMBER	REFERENCE DRAWINGS

		SNC-LAVALIN INC. 148 Nature Park Way Winnipeg, MB, Canada R3P 0X7 204-786-8060	
DESIGNED BY:	K. KOTYK	CHECKED BY:	B. CLEVEN
DRAWN BY:	B. DICKSON	APPROVED BY:	B. CLEVEN
SCALE:	1 : 5	ISSUED FOR CONSTRUCTION BY:	K. ZUREK
DATE:	2020/07/06	DATE:	2020/09/02
CONSULTANT NO.:			
NO.	REVISIONS	DATE	DESIGN CHECK
01	ISSUED FOR CONSTRUCTION	2020/09/11	K.K. B.C.
00	ISSUED FOR TENDER, BID OP 567-2020	2020/08/19	K.K. B.C.



THE CITY OF WINNIPEG WATER AND WASTE DEPARTMENT	
POLSON FLOOD PUMPING STATION 2020 UPGRADES STRUCTURAL MODIFICATIONS - PUMPING STATION MCC HOUSEKEEPING PADS	
CITY DRAWING NUMBER	SHEET REV. SIZE
1-0173F-S0010	001 01 A1