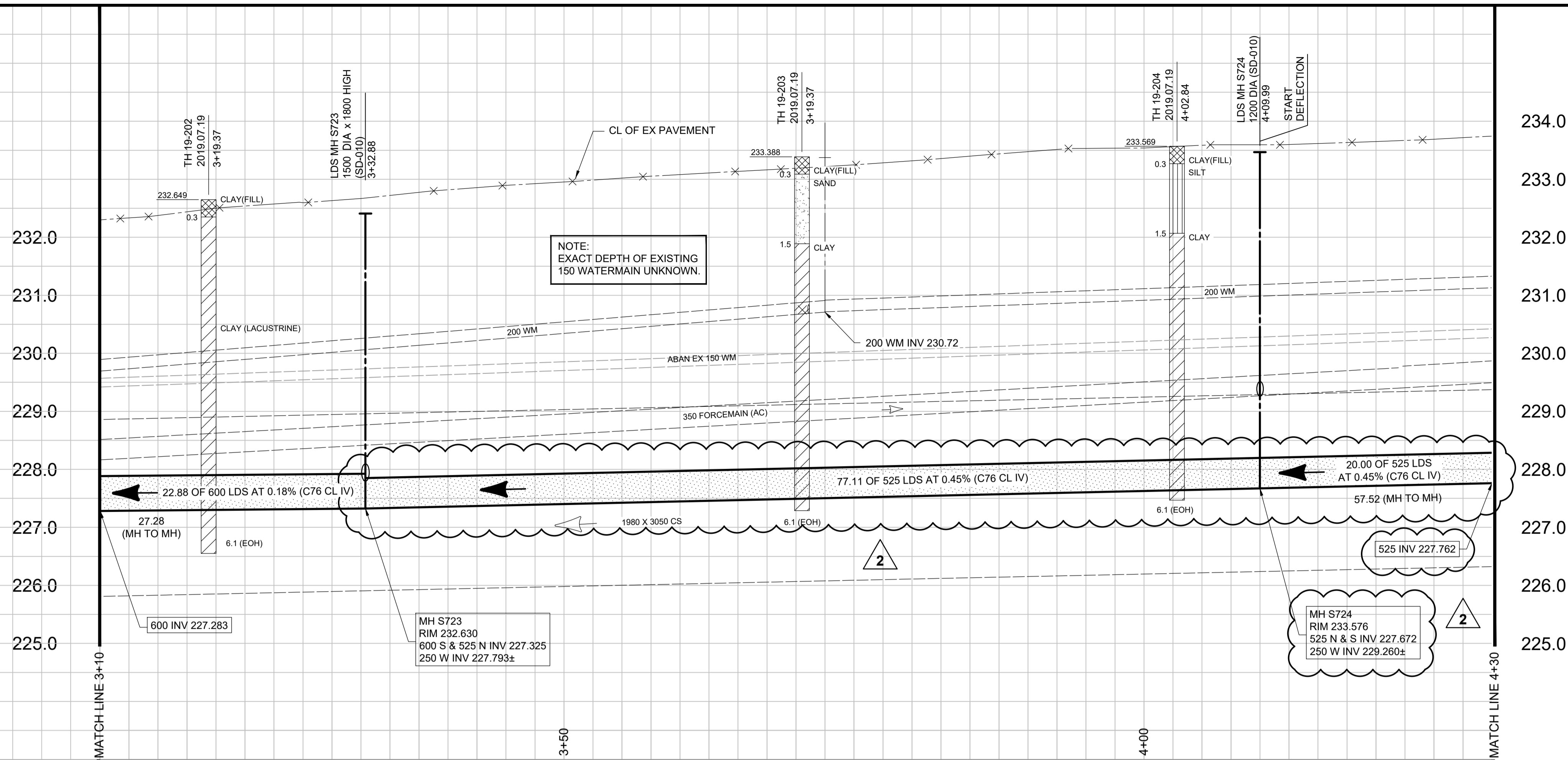
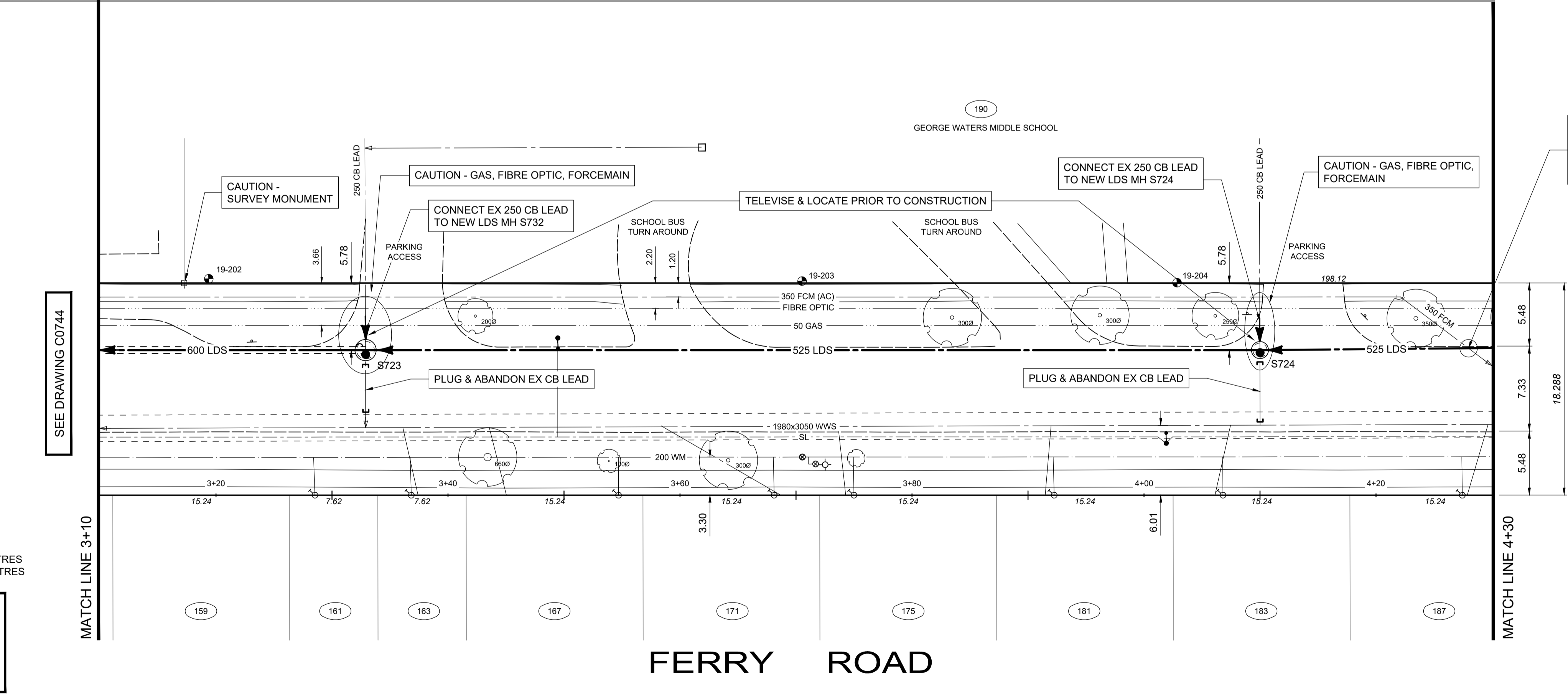


X:\A-CITY OF WINNIPEG - WATER & WASTE DEPARTMENT - 0012\1000\203.00 - FERRY ROAD\CONTRACT 7\CAD\PRODUCTION DRAWINGS\C0743 TO C0746\1001\20300-DWG-C0212 TO C0215 FERRY RD.DWG 2020-09-29 9:29 AM

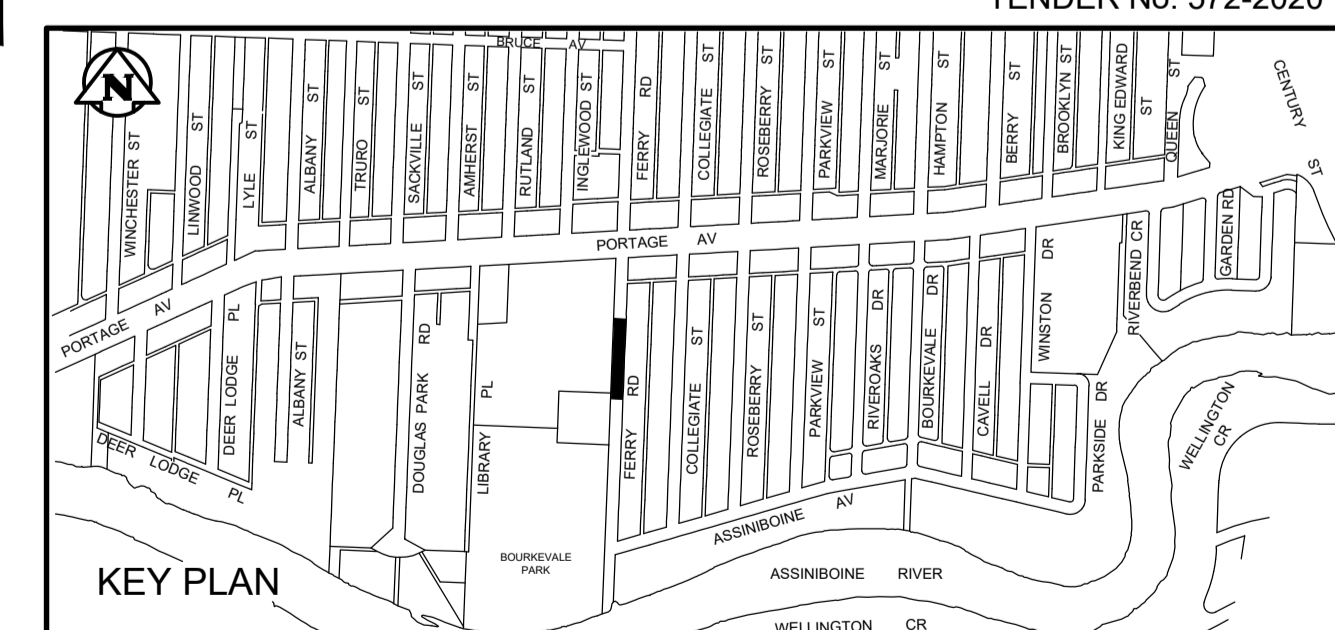
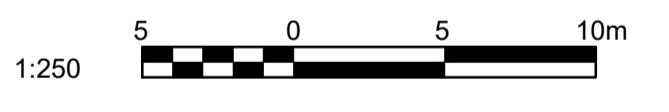


- CONSTRUCTION NOTES:**
1. LOCATION OF ALL SEWER AND WATER LINES TO BE CONFIRMED IN THE FIELD.
 2. SEWER AND WATER SERVICES SHOWN ON DRAWINGS ARE APPROXIMATE ONLY.
 3. INSTALL NEW SEWER AND CATCHBASIN LEADS BY TRENCHLESS METHODS, UNLESS NOTED OTHERWISE.
 4. INSTALL TYPE 'B' RISERS ON CATCHBASIN LEADS AS DIRECTED BY THE CONTRACT ADMINISTRATOR.
 5. MANHOLES TO BE LOCATED SUCH THAT THEY DO NOT CONFLICT WITH CURB.
 6. MANHOLES TO BE ISOLATED AS PER SD-2208.
- GENERAL NOTES:**
1. CHAINAGE IS ALONG EAST LIMIT OF FERRY ROAD.
 2. STATION 1+00 = EAST LIMIT OF FERRY ROAD AND NORTH LIMIT OF ASSINIBOINE AVENUE.
 3. SEE SPECIFICATIONS FOR DETAILED TEST HOLE INFORMATION.



CAUTION:
AC FORCEMAIN CROSSING
MIN 0.50m CLEARANCE
VERIFY FCM ELEVATION
PRIOR TO CONSTRUCTION

NOTES:
CONTRACTOR TO CONTACT THE GEOMATICS BRANCH
5 WORKING DAYS IN ADVANCE OF THE CONSTRUCTION
TO PROVIDE THE SURVEY MONUMENT PROTECTION
SERVICES REQUIRED.
PHONE: 918-1360
GEOMATICS JOB NUMBER - 20190655



METRIC
WHOLE NUMBERS INDICATE MILLIMETRES
DECIMALIZED NUMBERS INDICATE METRES

**ENGINEERS
GEOSCIENTISTS
MANITOBA**
Certificate of Authorization
Tetra Tech Canada Inc.
No. 6499

EXISTING	LEGEND-PLAN	PROPOSED	EXISTING	LEGEND-PLAN	PROPOSED	EXISTING	LEGEND-PLAN	PROPOSED
300 LDS	LAND DRAINAGE SEWER	300 LDS	○	MANHOLE	●	▲	BENCHMARK	▲
150 WM	WATERMAIN	□	□	CATCHBASIN/CATCH PIT	■	15.240	LEGAL DIMENSION	15.240
250 WWS	WASTEWATER SEWER	□	□	CURB & GUTTER INLET	▼	⊕	SURVEY BAR	⊕
300 CS	COMBINED SEWER	♂	♂	CURB STOP	—	—	GAS	—
350 FCM	FORCEMAIN	⊙	⊙	TEST HOLES	—	—	HYDRO	—
—	JUNCTIONS	⊙	⊙	TREE	—	—	BELLMTS	—
—	HYDRANT	⊙	⊙	ADDRESS	—	—	FIBRE OPTIC	—
—	VALVE	⊙	⊙	HYDRO POLE	—	—	CURB	—
—	BEND	—	—	LIGHT STANDARD	—	—	SIDEWALK	—
—	TEE	—	—	SWALE	—	—	SHAFT LOCATION	—
—	LEGEND-PLAN	—	—	LEGEND-PLAN	—	—	LEGEND-PLAN	—

LOCATION APPROVED UNDERGROUND STRUCTURES

SUPV.	UIG STRUCTURES COMMITTEE	DATE

NOTE:
LOCATION OF UNDERGROUND STRUCTURES AS SHOWN ARE BASED ON THE BEST INFORMATION AVAILABLE. BUT NO GUARANTEE IS GIVEN THAT ALL EXISTING UTILITIES ARE SHOWN OR THAT THE GIVEN LOCATIONS ARE EXACT. CONFIRMATION OF EXISTENCE AND EXACT LOCATION OF ALL SERVICES MUST BE OBTAINED FROM THE INDIVIDUAL UTILITIES BEFORE PROCEEDING WITH CONSTRUCTION.

B.M. CITY OF WINNIPEG 38-069
ELEV. 233.792m

TETRA TECH

DESIGNED BY	ML	CHECKED BY	KJM, TRC
DRAWN BY	GMD/NL	APPROVED BY	GS
HOR. SCALE:	1:250	RELEASED FOR CONSTRUCTION	
VERTICAL:	1:50		
DATE	2020-09-29	DATE	2020-09-29

PROVINCE OF MANITOBA
REGISTERED PROFESSIONAL ENGINEER
ORIGINAL DRAWING REV '00' SEALED BY T.R. CHRISTIANSEN 2020.08.26
CONSULTANT DRAWING NO. 1000120300-DWG-C0214

THE CITY OF WINNIPEG
WATER AND WASTE DEPARTMENT

FERRY ROAD AND RIVERBEND
COMBINED SEWER RELIEF WORKS
CONTRACT 7C

FERRY ROAD
210m NORTH OF ASSINIBOINE AVENUE TO
87m SOUTH OF PORTAGE AVENUE

CITY DRAWING NUMBER
LD-9577

SHEET **5** OF **9**

C0745