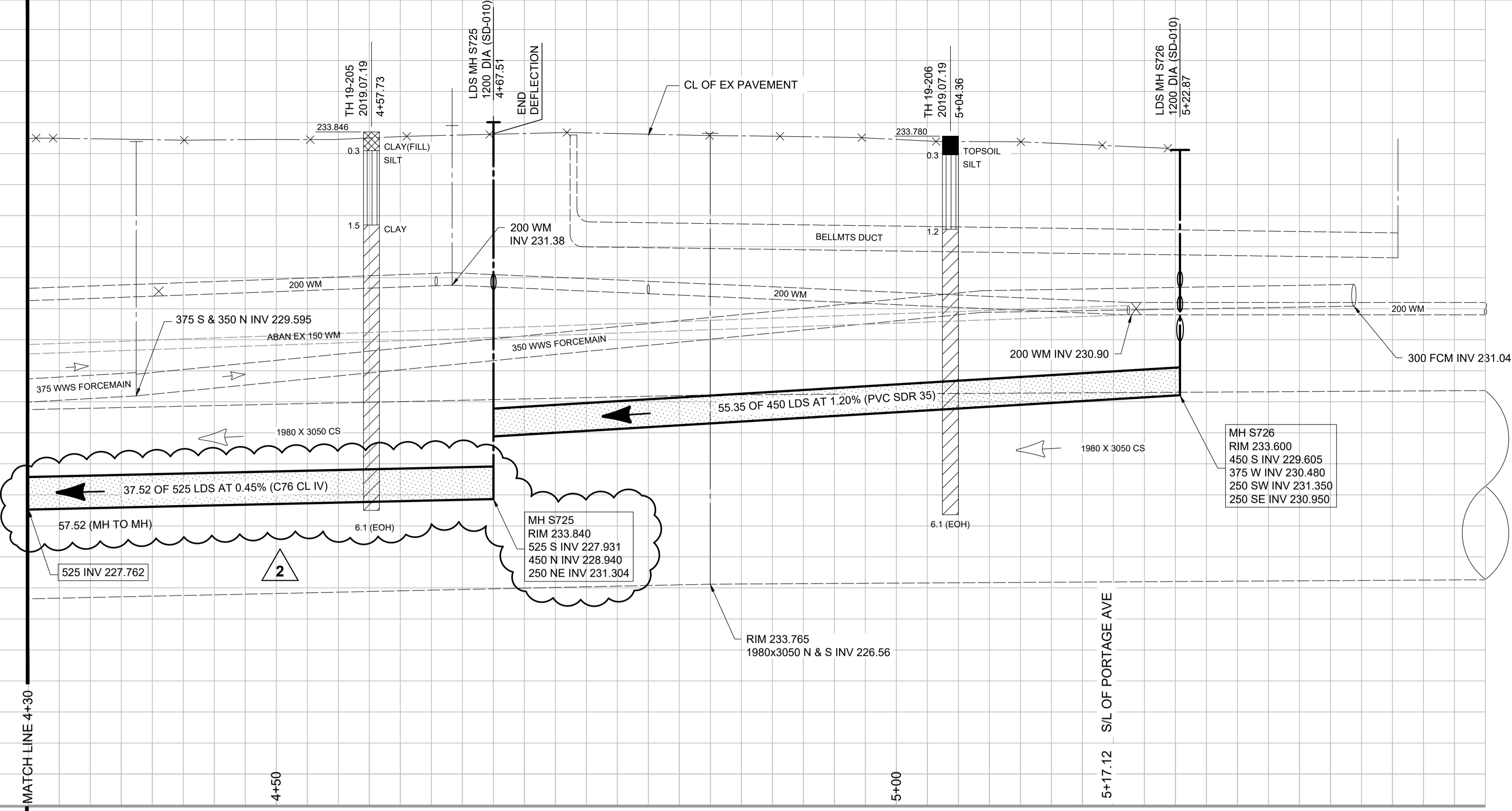


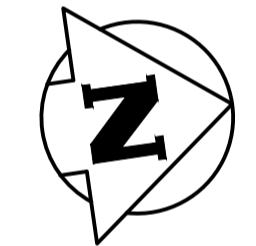
X:\A-CITY OF WINNIPEG - WATER & WASTE DEPARTMENT - 0012\1000\20300 - FERRY ROAD\CONTRACT 7\CAD\PRODUCTION DRAWINGS\C0745 TO C0748\1001\20300-DWG-C0212 TO C0215 FERRY RD.DWG. 2020-09-29 9:24 AM

234.0
233.0
232.0
231.0
230.0
229.0
228.0
227.0
226.0

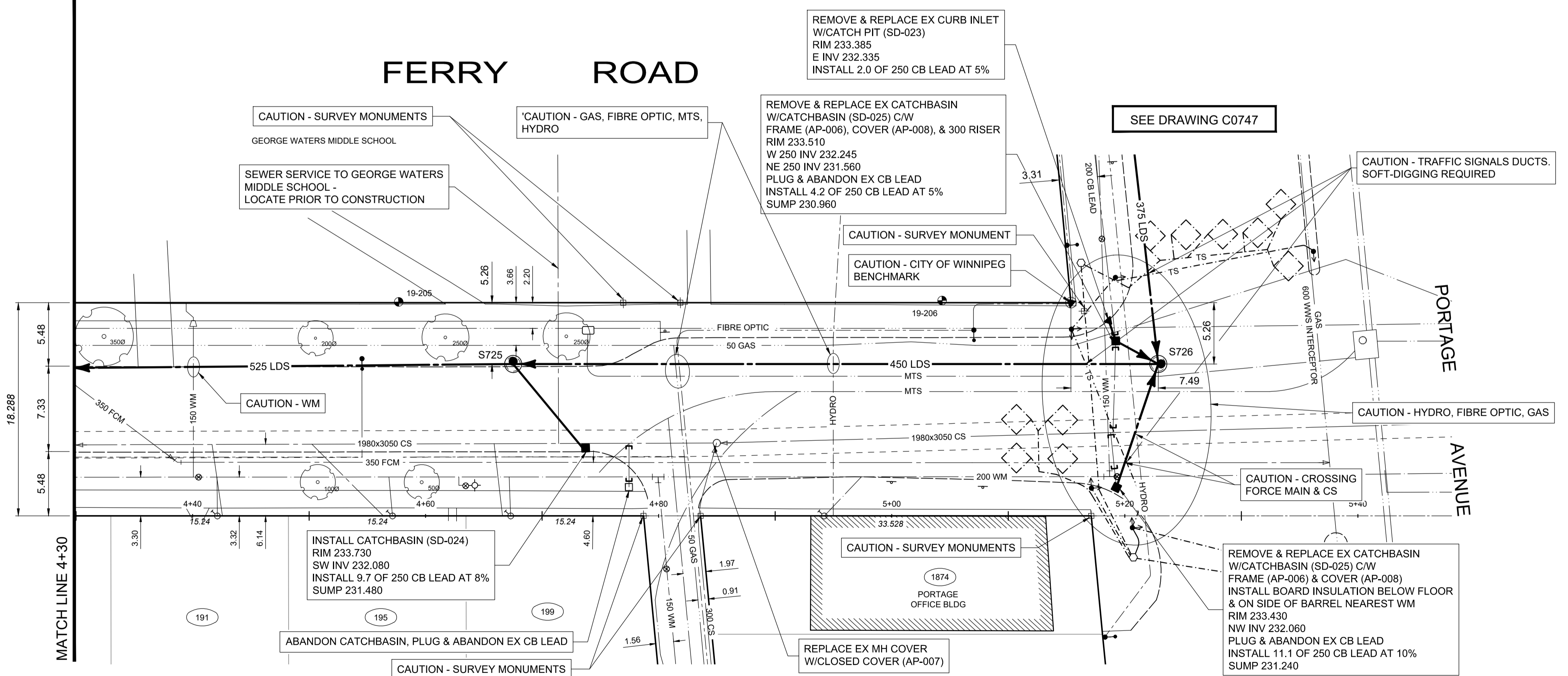


234.0
233.0
232.0
231.0
230.0
229.0
228.0
227.0
226.0

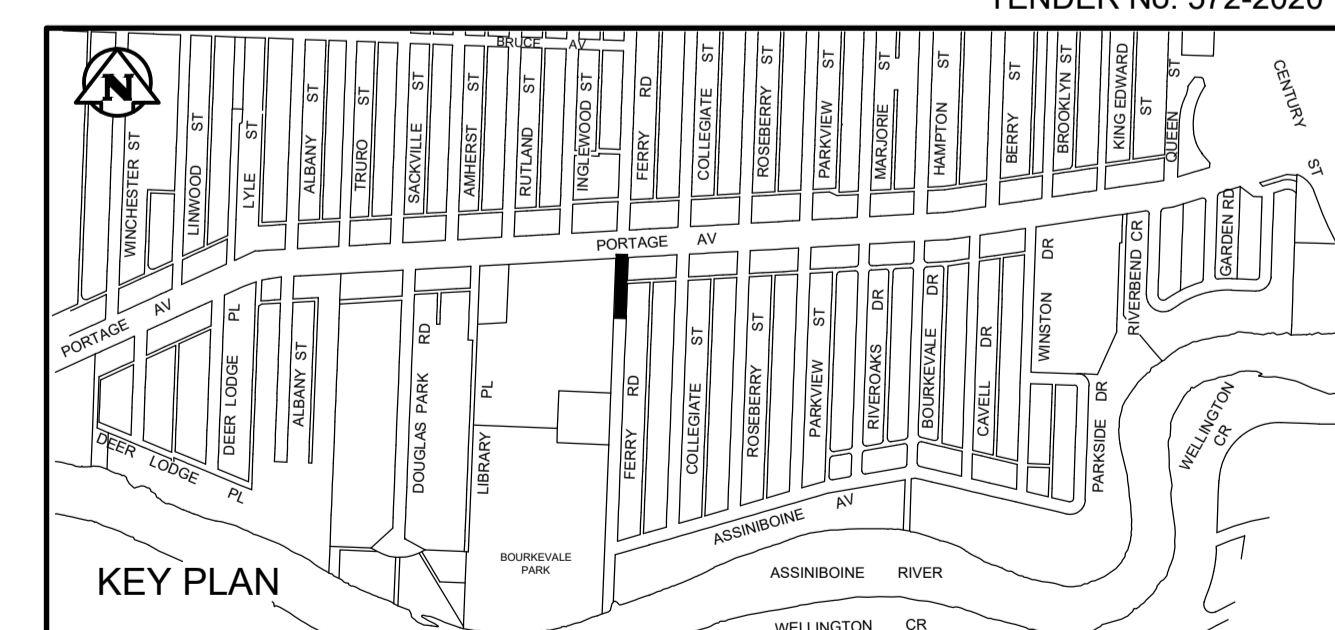
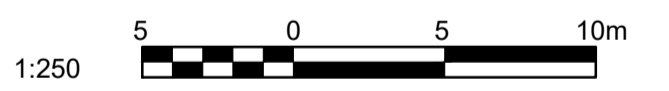
- CONSTRUCTION NOTES:**
1. LOCATION OF ALL SEWER AND WATER LINES TO BE CONFIRMED IN THE FIELD.
 2. SEWER AND WATER SERVICES SHOWN ON DRAWINGS ARE APPROXIMATE ONLY.
 3. INSTALL NEW SEWER AND CATCHBASIN LEADS BY TRENCHLESS METHODS, UNLESS NOTED OTHERWISE.
 4. INSTALL TYPE 'B' RISERS ON CATCHBASIN LEADS AS DIRECTED BY THE CONTRACT ADMINISTRATOR.
 5. MANHOLES TO BE LOCATED SUCH THAT THEY DO NOT CONFLICT WITH CURB.
 6. MANHOLES TO BE ISOLATED AS PER SD-220B.
- GENERAL NOTES:**
1. CHAINAGE IS ALONG EAST LIMIT OF FERRY ROAD.
 2. STATION 1+00 = EAST LIMIT OF FERRY ROAD AND NORTH LIMIT OF ASSINBOINE AVENUE.
 3. SEE SPECIFICATIONS FOR DETAILED TEST HOLE INFORMATION.



FERRY ROAD



NOTES:
CONTRACTOR TO CONTACT THE GEOMATICS BRANCH 5 WORKING DAYS IN ADVANCE OF THE CONSTRUCTION TO PROVIDE THE SURVEY MONUMENT PROTECTION SERVICES REQUIRED.
PHONE: 918-1360
GEOMATICS JOB NUMBER - 20190655



METRIC

WHOLE NUMBERS INDICATE MILLIMETRES
DECIMALIZED NUMBERS INDICATE METRES



EXISTING	LEGEND-PLAN	PROPOSED	EXISTING	LEGEND-PLAN	PROPOSED	EXISTING	LEGEND-PLAN	PROPOSED
300 LDS	LAND DRAINAGE SEWER	300 LDS	○	MANHOLE	●	▲	BENCHMARK	▲
150 WM	WATERMAIN	□	□	CATCHBASIN/CATCH PIT	■	15.240	LEGAL DIMENSION	15.240
250 WWS	WASTEWATER SEWER	□	□	CURB & GUTTER INLET	▼	⊕	SURVEY BAR	⊕
300 CS	COMBINED SEWER	♂	♂	CURB STOP	⊕	—	GAS	—
350 FCM	FORCEMAIN	⊙	⊙	TEST HOLES	⊙	—	HYDRO	—
—	JUNCTIONS	⊙	⊙	TREE	⊙	—	BELLMTS	—
—	HYDRANT	⊙	⊙	ADDRESS	—	—	FIBRE OPTIC	—
—	VALVE	⊙	⊙	HYDRO POLE	—	—	CURB	—
—	BEND	—	—	LIGHT STANDARD	—	—	SIDEWALK	—
—	TEE	—	—	SWALE	—	—	SHAFT LOCATION	—
EXISTING	LEGEND-PLAN	PROPOSED	EXISTING	LEGEND-PLAN	PROPOSED	EXISTING	LEGEND-PLAN	PROPOSED

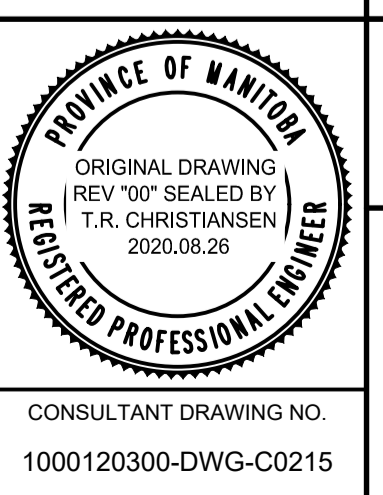
LOCATION APPROVED UNDERGROUND STRUCTURES

SUPV. U/G STRUCTURES COMMITTEE	DATE
NOTE: LOCATION OF UNDERGROUND STRUCTURES AS SHOWN ARE BASED ON THE BEST INFORMATION AVAILABLE. BUT NO GUARANTEE IS GIVEN THAT ALL EXISTING UTILITIES ARE SHOWN OR THAT THE GIVEN LOCATIONS ARE EXACT. CONFIRMATION OF EXISTENCE AND EXACT LOCATION OF ALL SERVICES MUST BE OBTAINED FROM THE INDIVIDUAL UTILITIES BEFORE PROCEEDING WITH CONSTRUCTION.	

B.M. CITY OF WINNIPEG 38-069	ELEV. 233.792m		
01	ISSUED FOR TENDER	20.09.29	TRC
02	ISSUED FOR TENDER	20.09.03	TRC
00	ISSUED FOR APPROVAL	20.08.26	TRC
NO.	REVISIONS	DATE	BY

TETRA TECH

DESIGNED BY	ML	CHECKED BY	KJM, TRC
DRAWN BY	GMD/NL	APPROVED BY	GS
HOR. SCALE:	1 : 250	RELEASED FOR CONSTRUCTION	
VERTICAL:	1 : 50		
DATE	2020-09-29	DATE	



THE CITY OF WINNIPEG
WATER AND WASTE DEPARTMENT

FERRY ROAD AND RIVERBEND COMBINED SEWER RELIEF WORKS CONTRACT 7C

FERRY ROAD
87m SOUTH OF PORTAGE AVENUE TO PORTAGE AVENUE

CITY DRAWING NUMBER LD-9578
SHEET 6 OF 9
C0746