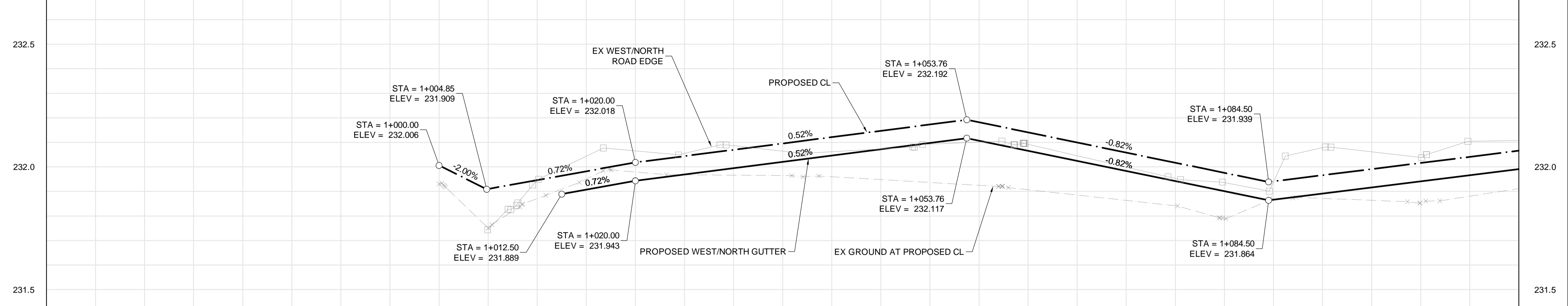
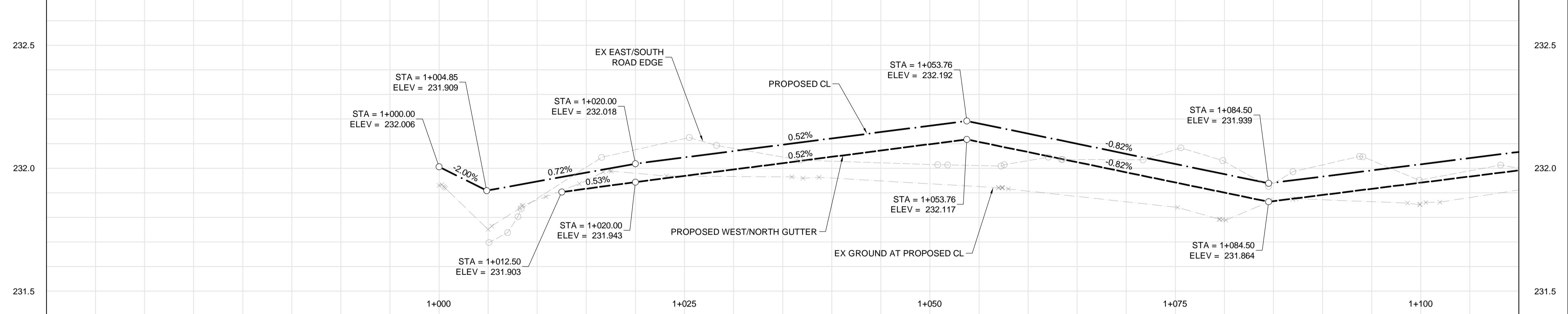


RILEY CRESCENT - WEST/NORTH



RILEY CRESCENT - EAST/SOUTH



CONSTRUCTION NOTES:

- ALL WORK AND MATERIALS TO BE IN ACCORDANCE WITH LATEST REVISION OF THE CITY OF WINNIPEG STANDARD CONSTRUCTION SPECIFICATIONS.
- LEGAL PLAN AND UNDERGROUND INFORMATION FROM CITY OF WINNIPEG LBIS. CONTRACTOR TO VERIFY ALL UNDERGROUNDS IN THE FIELD.
- CONTRACTOR TO TAKE PRECAUTIONARY STEPS TO AVOID DAMAGE FROM CONSTRUCTION ACTIVITIES TO TREES WITHIN THE LIMITS OF CONSTRUCTION.
- LOCATION OF EXISTING UTILITIES/SERVICES TO BE CONFIRMED IN THE FIELD BY THE CONTRACTOR.
- ADJUST EXISTING WATER VALVES, WATER SERVICE CURB STOPS AND HYDRANT ASSEMBLIES TO GRADE.
- MODIFIED BARRIER CURB TO BE USED AT ALL INTERSECTION RADII.
- ADJUST MANHOLE AND CATCH BASIN RIMS TO NEW GRADES.
- CONTRACTOR TO REGRADE/RENEW EXISTING PRIVATE SIDEWALKS TO LIMITS AS SHOWN. SIDEWALKS TO BE RENEWED WITH CONCRETE UNLESS OTHERWISE NOTED.
- CB LEADS TO BE INSTALLED AT MIN 1.0% SLOPE OR AS DIRECTED BY THE CONTRACT ADMINISTRATOR.
- LIMITS OF BOULEVARD GRADING TO BE FINALIZED IN THE FIELD BY THE CONTRACT ADMINISTRATOR.
- CONTRACTOR TO CONFIRM LOCATION AND LIMITS OF SEWER REPAIRS BY PERFORMING VIDEO INSPECTION AND REVIEWING WITH THE CONTRACT ADMINISTRATOR PRIOR TO CONSTRUCTION.
- LAMP STANDARDS, HYDRO POLES AND ANCHORS THAT REQUIRE TEMPORARY SUPPORT, REMOVAL OR REPLACEMENT, TO BE DONE AT THE EXPENSE OF THE CONTRACTOR, AS NECESSARY.
- INSTALL 6 m OF 150 mm SUBDRAIN TO CATCH BASINS IN BOTH DIRECTIONS PARALLEL TO ROADWAY AS PER SD-245 AND CAP ENDS.

ABBREVIATIONS:

CONC	CONCRETE ROADWAY
ASP	ASPHALT ROADWAY
ASP OVLY	ASPHALT OVERLAY ROADWAY
PVS	PAVING STONE/BRICK
TYP	TYPICAL
EX	EXISTING
MH	MANHOLE
WV	WATER VALVE
EL	ELEVATION
CB	CATCH BASIN
CP	CATCH PIT
CI	CURB INLET
CL	CONTROL LINE

METRIC

WHOLE NUMBERS INDICATE MILLIMETRES
DECIMALIZED NUMBERS INDICATE METRES

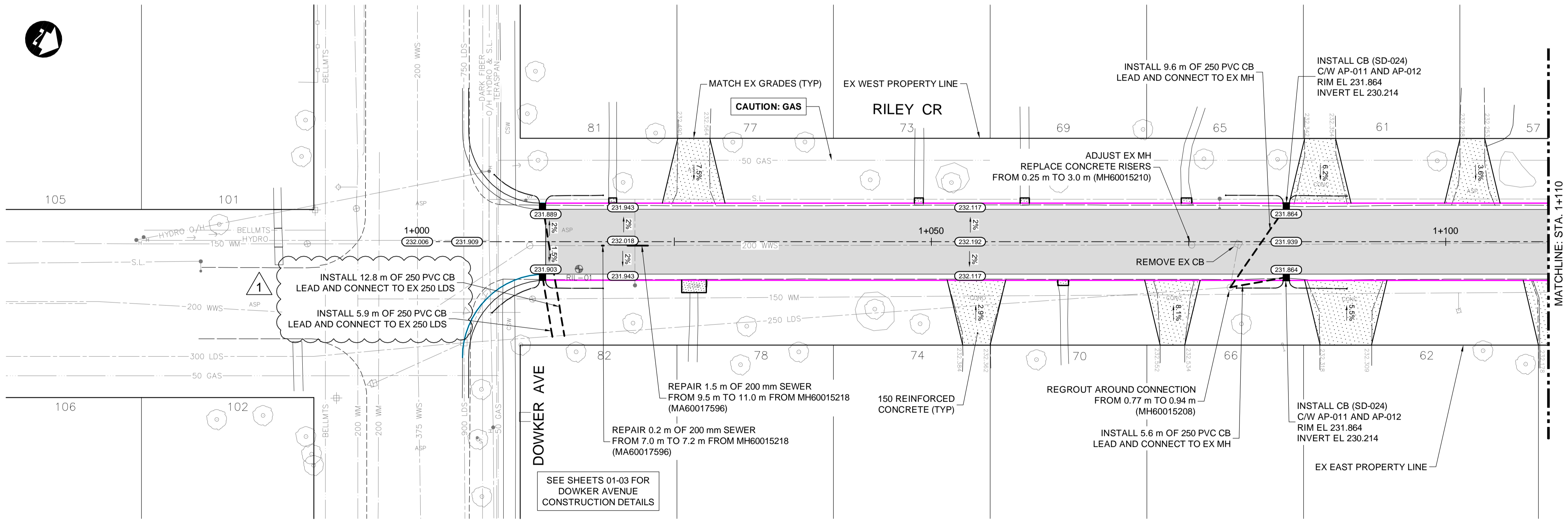
WARNING

- IF POWER EQUIPMENT OR EXPLOSIVES ARE TO BE USED FOR EXCAVATION ON THIS PROJECT THE CONTRACTOR MUST:
- NOTIFY THE GAS COMPANY OF THE PROPOSED LOCATION OF EXCAVATION.
 - TAKE PRECAUTION TO AVOID DAMAGE TO GAS COMPANY INSTALLATIONS SEE PROVINCIAL REGULATION 210/72 FOR DETAILS.
 - OBTAIN EXCAVATION PERMITS PRIOR TO CONSTRUCTION.

CURB LEGEND

BARRIER CURB (SD-203A, SD-204, SD-205 OR SD-206A)	—
MODIFIED BARRIER CURB (SD-203B)	—
BARRIER CURB AND GUTTER (SD-200)	—
75 mm LIP CURB AND GUTTER (DETAIL 1, SHT 25)	—
40 mm LIP CURB AND GUTTER (DETAIL 2, SHT 25)	—
MODIFIED BARRIER CURB AND GUTTER (DETAIL 3, SHT 25)	—

**PRELIMINARY ONLY
NOT FOR CONSTRUCTION**



C:\w_working_directory\projects_2020_400\3737_202958-RIL-CT-CON-PLAN-PROFILE.dwg

EXISTING	LEGEND-PLAN	PROPOSED	EXISTING	LEGEND-PLAN	PROPOSED	EXISTING	LEGEND-PROFILE	PROPOSED
HYDRANT			CONCRETE			WATERMAIN		
VALVE			ASPHALT			LAND DRAINAGE SEWER		
MANHOLE			SIDEWALK			WASTE WATER SEWER		
CATCH BASIN			PAVING STONES			HYDRANT		
CATCH PIT			PAVEMENT REPAIR FABRIC			VALVE		
150 WM			PARTIAL DEPTH REPAIR			PROFILE		
300 LDS			PROPERTY LINE			NORTH/WEST GUTTER		
250 WWS			ELEVATION			SOUTH/EAST GUTTER		
HYDRO			CURB RAMP			NORTH/WEST DITCH		
M.T.S.			DETECTABLE TILE			SOUTH/EAST DITCH		
100 GAS								

UNDERGROUND STRUCTURES

SUPV. U/G STRUCTURES	DATE

LOCATION OF UNDERGROUND STRUCTURES AS SHOWN ARE BASED ON THE BEST INFORMATION AVAILABLE. BUT NO GUARANTEE IS GIVEN THAT ALL EXISTING UTILITIES ARE SHOWN OR THAT THE GIVEN LOCATIONS ARE EXACT. CONFIRMATION OF EXISTENCE AND EXACT LOCATION OF ALL SERVICES MUST BE OBTAINED FROM THE INDIVIDUAL UTILITIES BEFORE PROCEEDING WITH CONSTRUCTION.

B.M. ELEV.	DESIGNED BY	DRAWN BY	CHECKED BY	APPROVED BY	HOR. SCALE	VERTICAL
	JAT	TJH	JNC	DBW	1:250	1:10

NO.	REVISIONS	DATE	BY	DATE
1	ISSUED AS ADDENDUM #1	21/03/08	DBW	
0	ISSUED FOR TENDER	21/02/23	DBW	

DILLON CONSULTING

RELEASED FOR CONSTRUCTION

DATE

ENGINEER'S SEAL

TENDER DRAWING

NOT TO BE USED FOR CONSTRUCTION

CONSULTANT PROJECT NUMBER

20-2958

THE CITY OF WINNIPEG
PUBLIC WORKS DEPARTMENT

2021 LOCAL STREETS RENEWAL PROGRAM 21-R-05:
DOWKER AVENUE, RILEY CRESCENT AND VARIOUS OTHER LOCATIONS

RILEY CRESCENT - PLAN-PROFILE
(START TO STA. 1+110)

CITY DRAWING NUMBER

SHEET 04 OF 26

CONSULTANT DRAWING NUMBER