

01 WOMEN'S WASHROOM BLOW-UP PLAN
3/8" = 1'-0"

WASHROOM FIXTURE SCHEDULE						
Item #	Quantity	Manufacturer	Model	Product #	Finish	Accessories
E01	1	AMERICAN STANDARD	MADERA FloWise 16.5" H Elongated Flushometer 4.8L toilet	3461 001	White	Seat: CENTOCO Solid Plastic Seat, 500STSC, White Flush Valve: Delta Electronic Flush Valve, 81T22018TA-MMO
E02	4	AMERICAN STANDARD	MADERA FloWise 15" H Elongated Flushometer 4.8L toilet	3451 001	White	Seat: CENTOCO Solid Plastic Seat, 500STSC, White Flush Valve: Delta Electronic Flush Valve, 81T22018TA-MMO
E03	3	AMERICAN STANDARD	CADET Everclean Oval Countertop Sink	0419.44EC	White	Faucet: DELTA, 591T0250 Trap: Transformer: DELTA Plug-In Transformer RP32856
E04	1	AMERICAN STANDARD	DECORUM Wall-hung Lavatory w/ Everclean	9024.004EC	White	Faucet: DELTA, 591T0250 Trap: Transformer: DELTA Plug-In Transformer RP32856
E05	4	BOBRICK	Surface Mounted Toilet Tissue Dispenser w/ Utility Shelf	B-2840	Satin SS	N/A
E06	3	BOBRICK	Automatic Wall-mounted Soap Dispenser	B-2012	Satin SS	N/A
E07	2	BOBRICK	24" x 60" Mirror w/ Stainless Steel Channel Frame	B-165 2460	N/A	N/A
E08	4	BOBRICK	18" x 36" Mirror w/ Stainless Steel Channel Frame	B-165 1836	N/A	N/A
E09	1	CUSTOM	36" x 60" Mirror	CUSTOM	N/A	Provide penetrations to receive electrical for wall sconces
E10	1	KOALA KARE	Horizontal Recessed Mounted Baby Change Station	KB110-SSRE	SS	N/A
E11	1	FROST	Safety Coat Hook	1150	White hook, SS base	N/A
E12	2	EXCEL	XLERATOR Hand Dryer	XL-SB	Brushed SS	N/A
E13	1	BOBRICK	24" Grab Bar w/ Peening	B-5806.99x24	Satin SS	N/A
E14	1	BOBRICK	36" Grab Bar w/ Peening	B-5806.99x30	Satin SS	N/A
E15	1	BOBRICK	30" Grab Bar w/ Peening	B-5806.99x36	Satin SS	N/A
E16	1	FROST	12" Toilet Back Rest	1028	SS	N/A

GENERAL NOTES:
 01. REFER TO SHEET 002 FOR GENERAL MATERIAL SPECIFICATIONS
 02. REFER TO SHEET 003 FOR ROOM FINISHES AND LIGHT FIXTURES
 03. REFER TO THE ELECTRICAL DRAWINGS FOR ELECTRICAL COMPONENTS, NOTES AND SPECIFICATIONS
 04. REFER TO THE MECHANICAL DRAWINGS FOR MECHANICAL COMPONENTS, NOTES AND SPECIFICATIONS

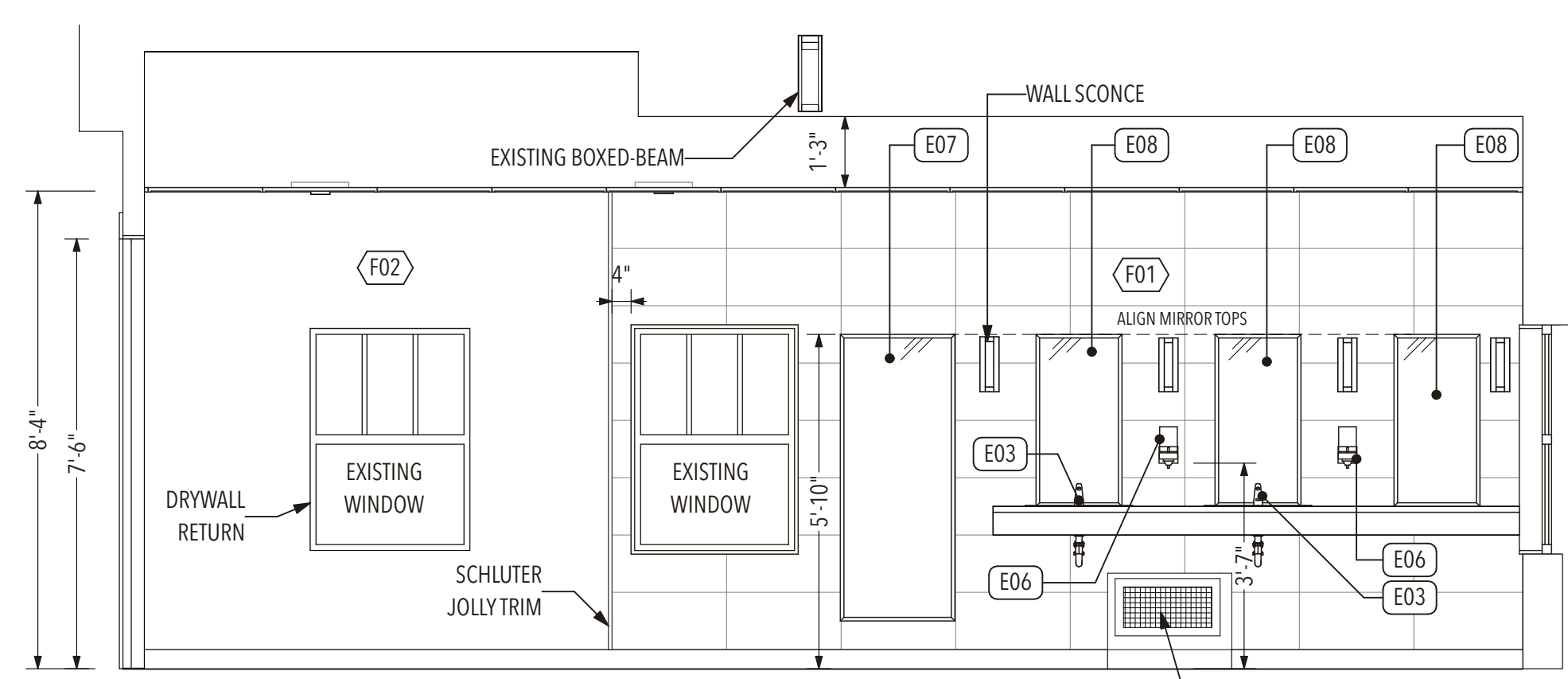
CONTRACT ADMINISTRATOR:
 Kathy Roberts
 Project Officer, Municipal Accommodations
 Planning, Property and Development Department
 City of Winnipeg
 Phone: 204.470.7380
 Email: kathyroberts@winnipeg.ca

1. DO NOT SCALE DRAWINGS. WRITTEN DIMENSIONS SHALL GOVERN.
 2. CONTACT THE CONTRACT ADMINISTRATOR TO VERIFY ANY UNCLEAR OR ILLEGIBLE DIMENSION, SPECIFICATION AND/OR NOTE BEFORE COMMENCEMENT OF ANY CONSTRUCTION WORK OR RELATED SERVICES.
 3. THESE DRAWINGS AND SPECIFICATIONS ARE NOT INTENDED TO DEPICT EACH AND EVERY CONDITION OR DETAIL OF CONSTRUCTION. THE CONTRACTOR IS IN THE BEST POSITION TO VERIFY THAT ALL CONSTRUCTION IS COMPLETED IN A MANNER THAT IS IN CONFORMANCE WITH ALL APPLICABLE STATUTORY REQUIREMENTS AND THE CONTRACT DOCUMENTS.
 4. DO NOT PERFORM WORK THAT IS NOT IN CONFORMANCE WITH THIS DOCUMENT WITHOUT THE CONTRACT ADMINISTRATOR'S WRITTEN APPROVAL.
 5. DO NOT USE THIS DOCUMENT FOR CONSTRUCTION PURPOSES UNTIL APPROVED BY AN AUTHORIZED AGENT OF THE CONTRACT ADMINISTRATOR.

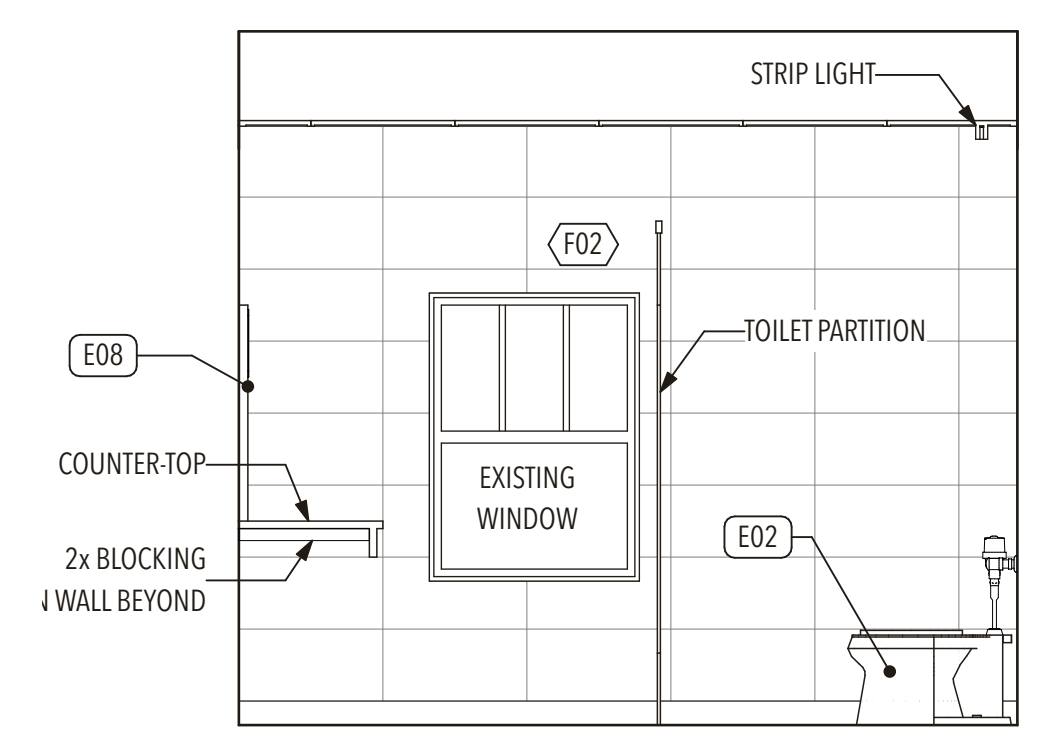
REVISION HISTORY			
No.	Issue Name	Issue Date	By
01	IFR 60% COMPLETED SET	2020-12-10	Ethem Tar
02	IFR 95% COMPLETED SET	2020-12-11	Ethem Tar
03	IFR 99% COMPLETED SET	2020-12-17	Ethem Tar
04	ISSUED FOR CONSTRUCTION	2020-12-23	Ethem Tar
05	ADDENDUM	2021-01-21	Ethem Tar

CONSULTANTS:
 1-800-566-5666
 Winnipeg, MB
 Canada R2S 0R8
 204.615.3442
 info@darkhorse.ca

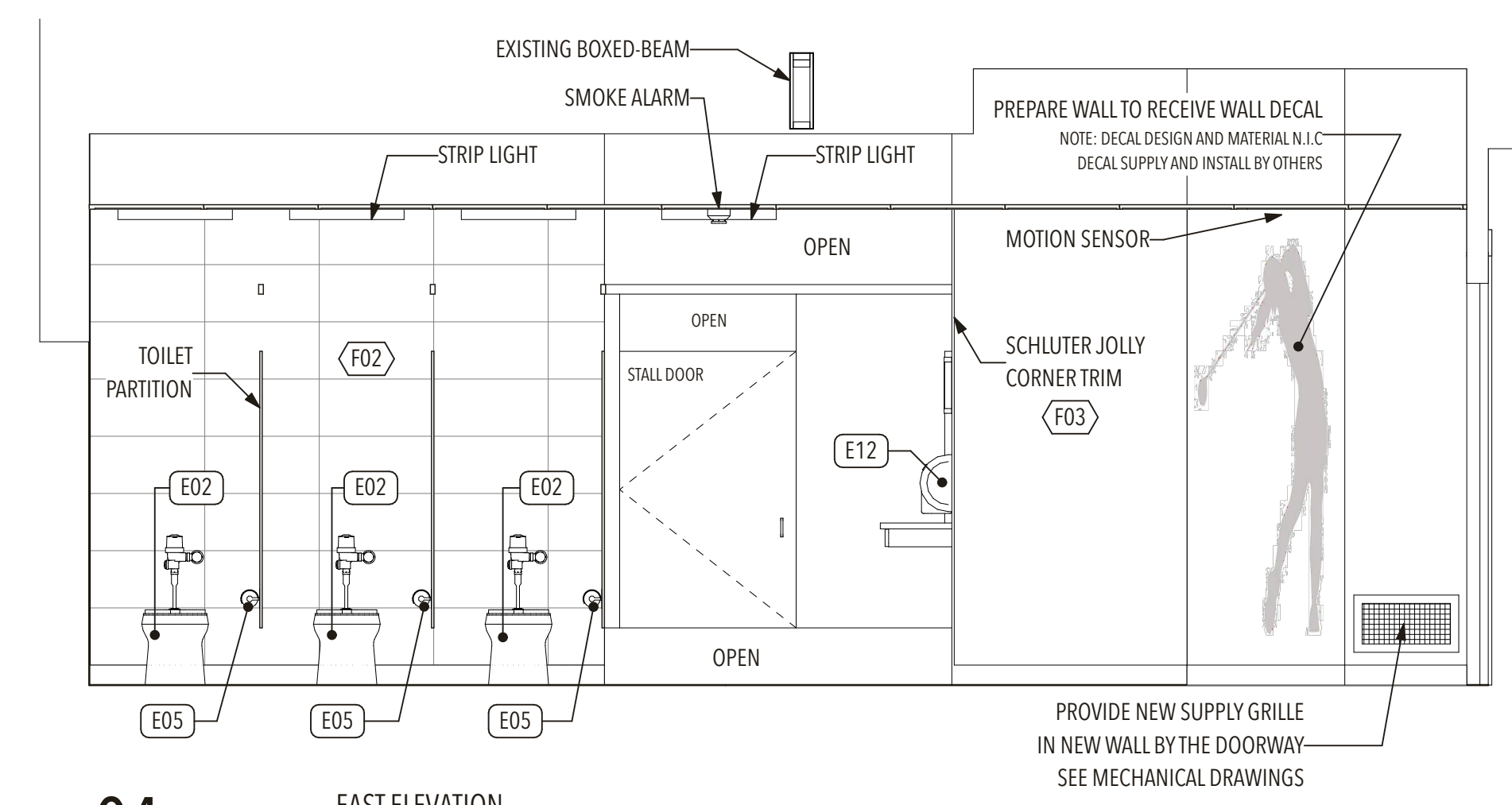
© 2015-2020 DARK HORSE ARCHITECTURE INC. ALL RIGHTS RESERVED. This document is an instrument of architectural services and is the sole property of Dark Horse Architecture Inc. Any use of this document without the written consent by Dark Horse Architecture Inc. is not allowed.



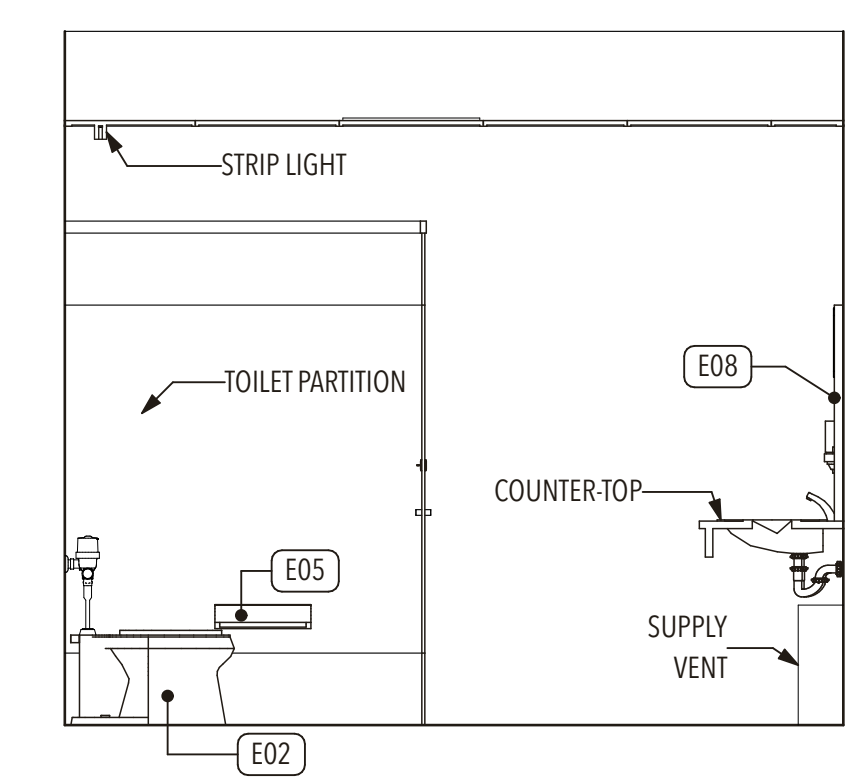
02 WEST ELEVATION
3/8" = 1'-0"



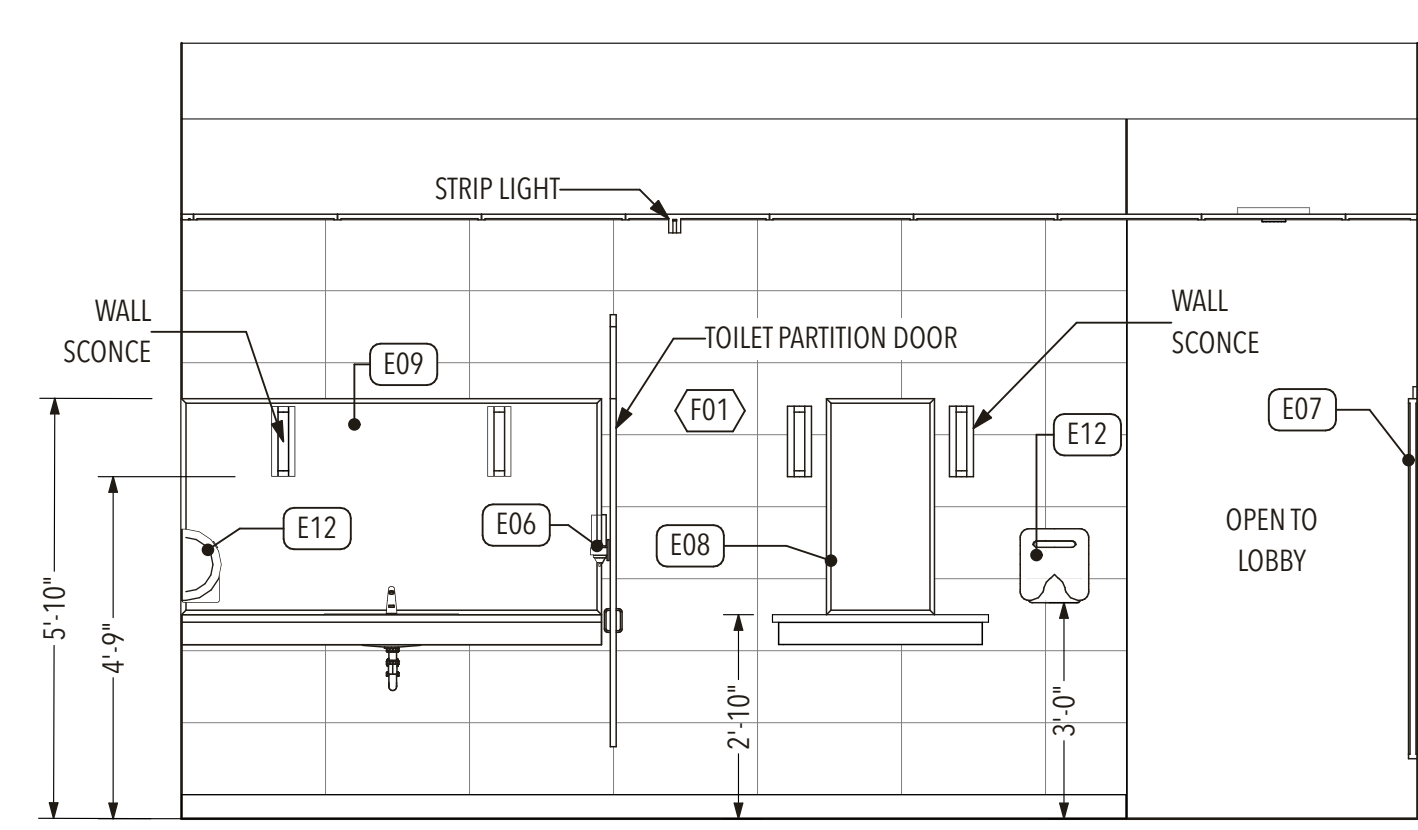
03 NORTH ELEVATION
3/8" = 1'-0"



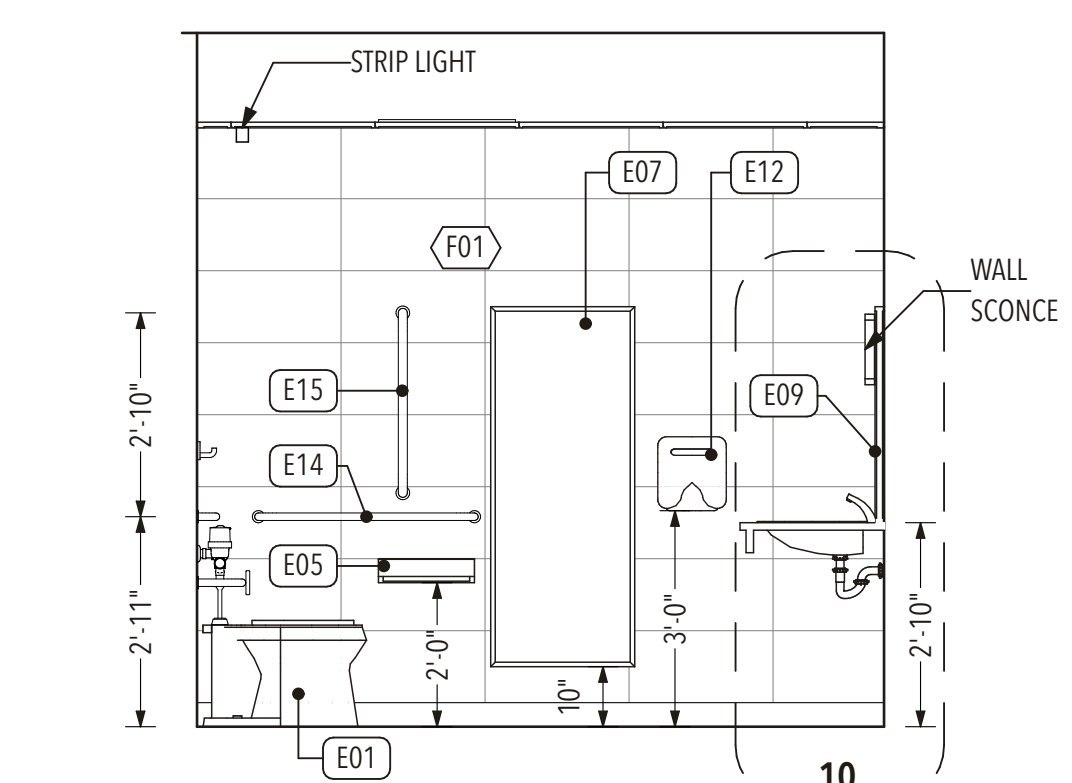
04 EAST ELEVATION
3/8" = 1'-0"



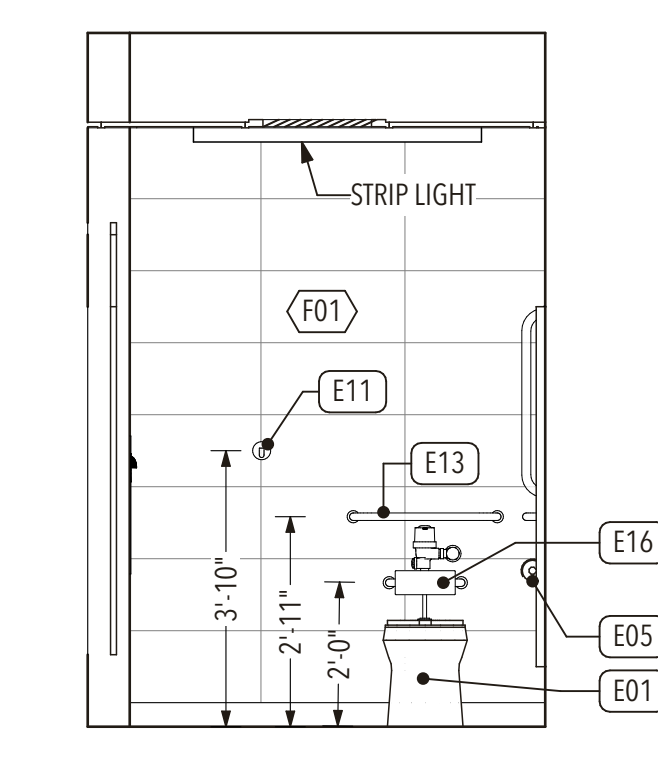
05 SOUTH ELEVATION
3/8" = 1'-0"



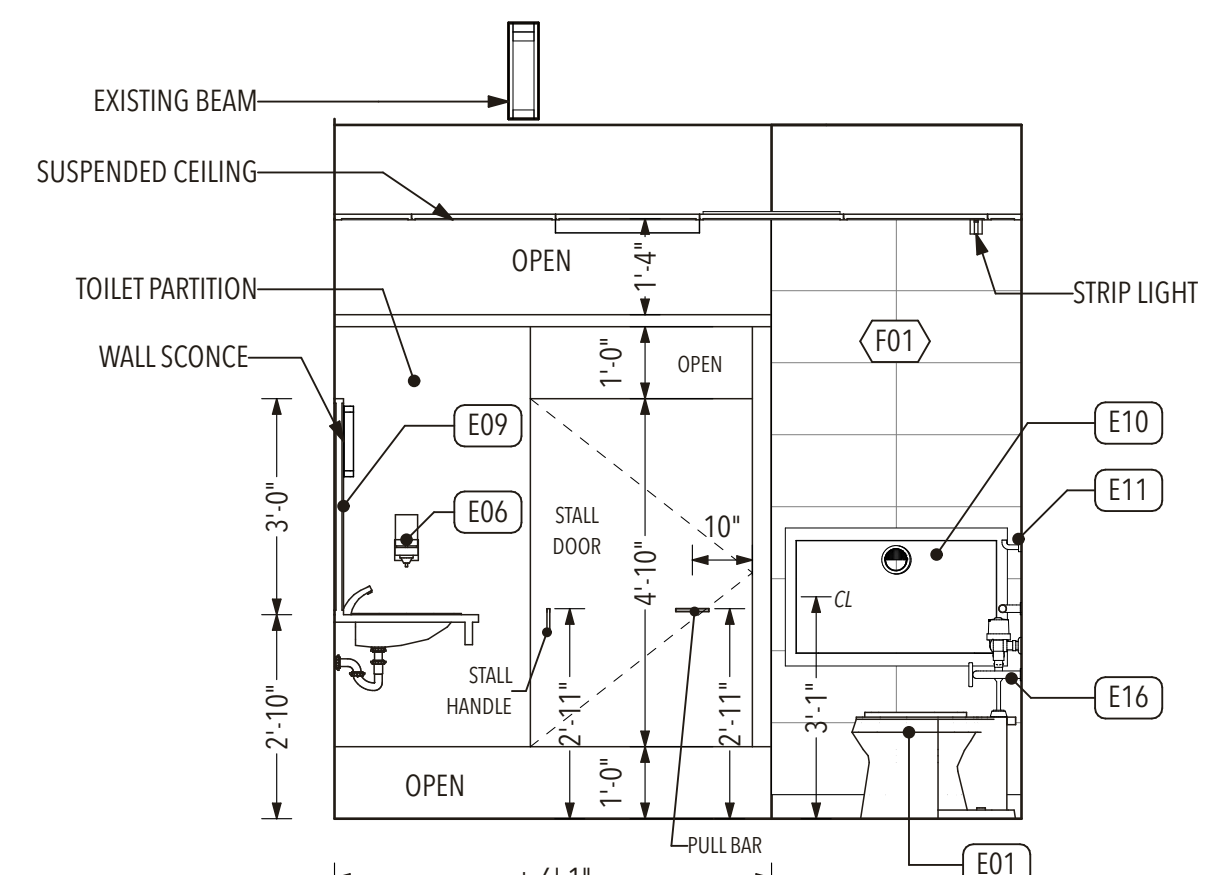
06 BARRIER-FREE STALL SOUTH ELEVATION
3/8" = 1'-0"



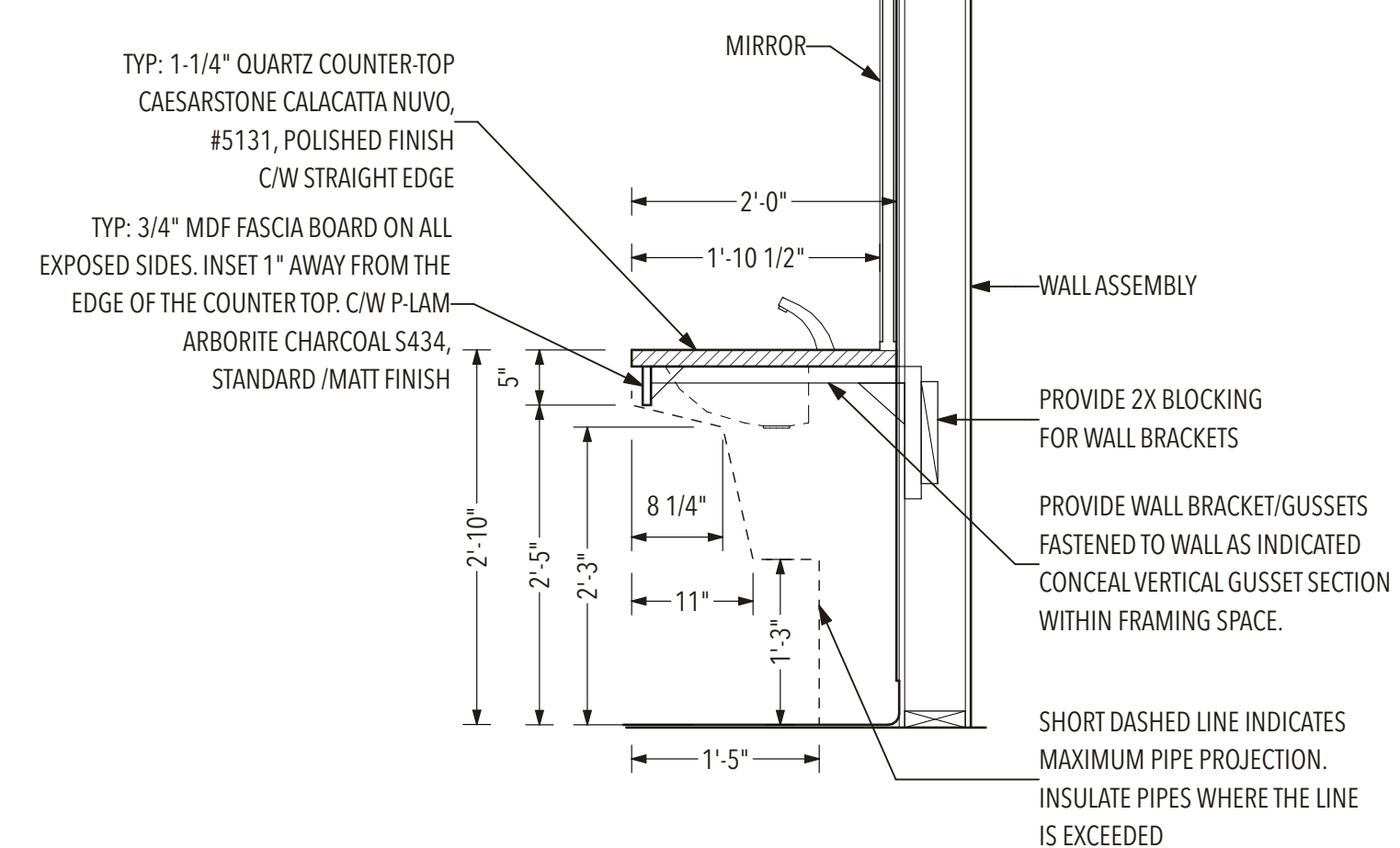
07 BARRIER-FREE STALL EAST ELEVATION
3/8" = 1'-0"



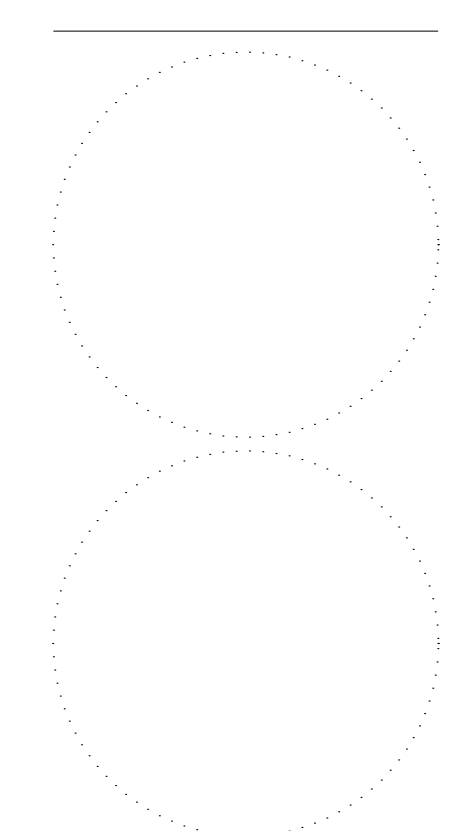
08 BARRIER-FREE STALL NORTH ELEVATION
3/8" = 1'-0"



09 BARRIER-FREE STALL WEST ELEVATION
3/8" = 1'-0"



10 DETAIL @ BARRIER-FREE LAVATORY
3/4" = 1'-0"



PROJECT #: 2015
 ISSUE DATE: 2021-01-21
 ISSUE NAME: ADDENDUM
 PROJECT SUPERVISOR: ETHEM TAR
 DRAFTED BY: ET
 CHECKED BY: ET

PROJECT ADDRESS: 2021 Main St
 Winnipeg, MB, R2V 2B9
 PROJECT TYPE: COMMERCIAL INTERIOR ALTERATION
 TENDER #: 911-2020
 PROJECT NAME: KILDONAN PARK
 GOLF COURSE CLUBHOUSE
 WOMEN'S WASHROOM
 RENOVATION
 2021 MAIN ST.
 WOMEN'S WASHROOM ELEVATIONS