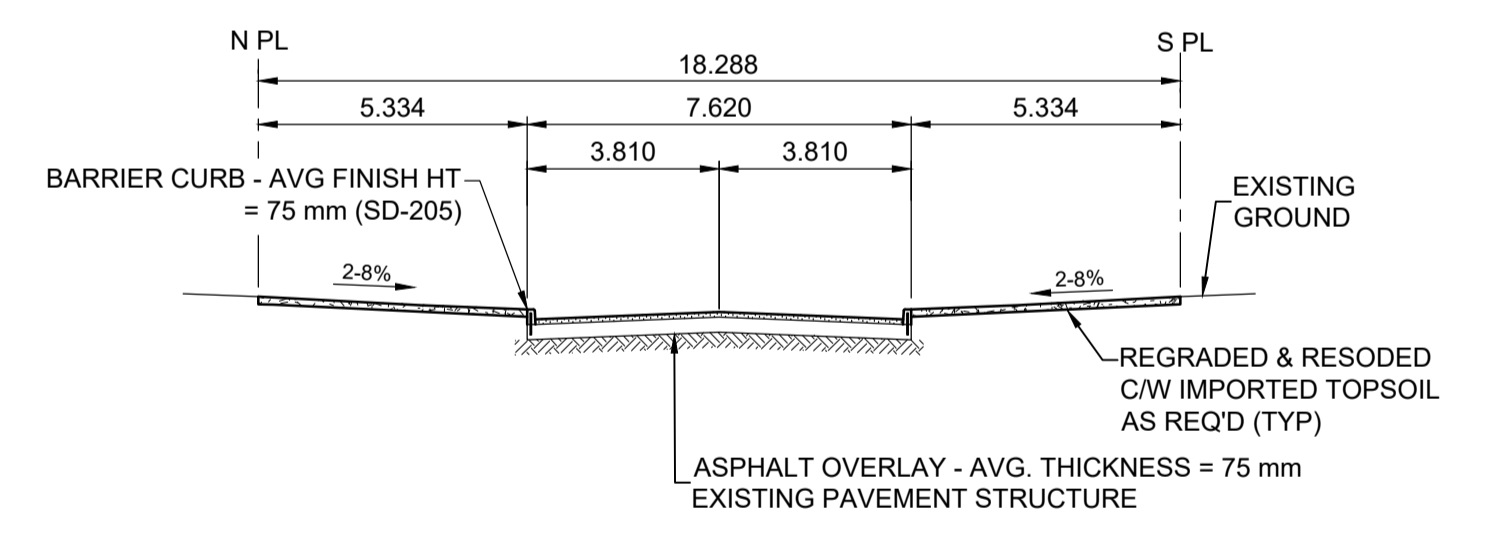
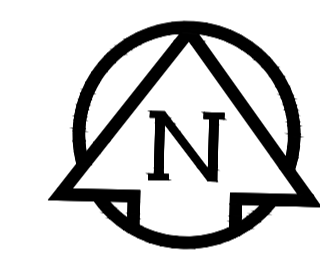
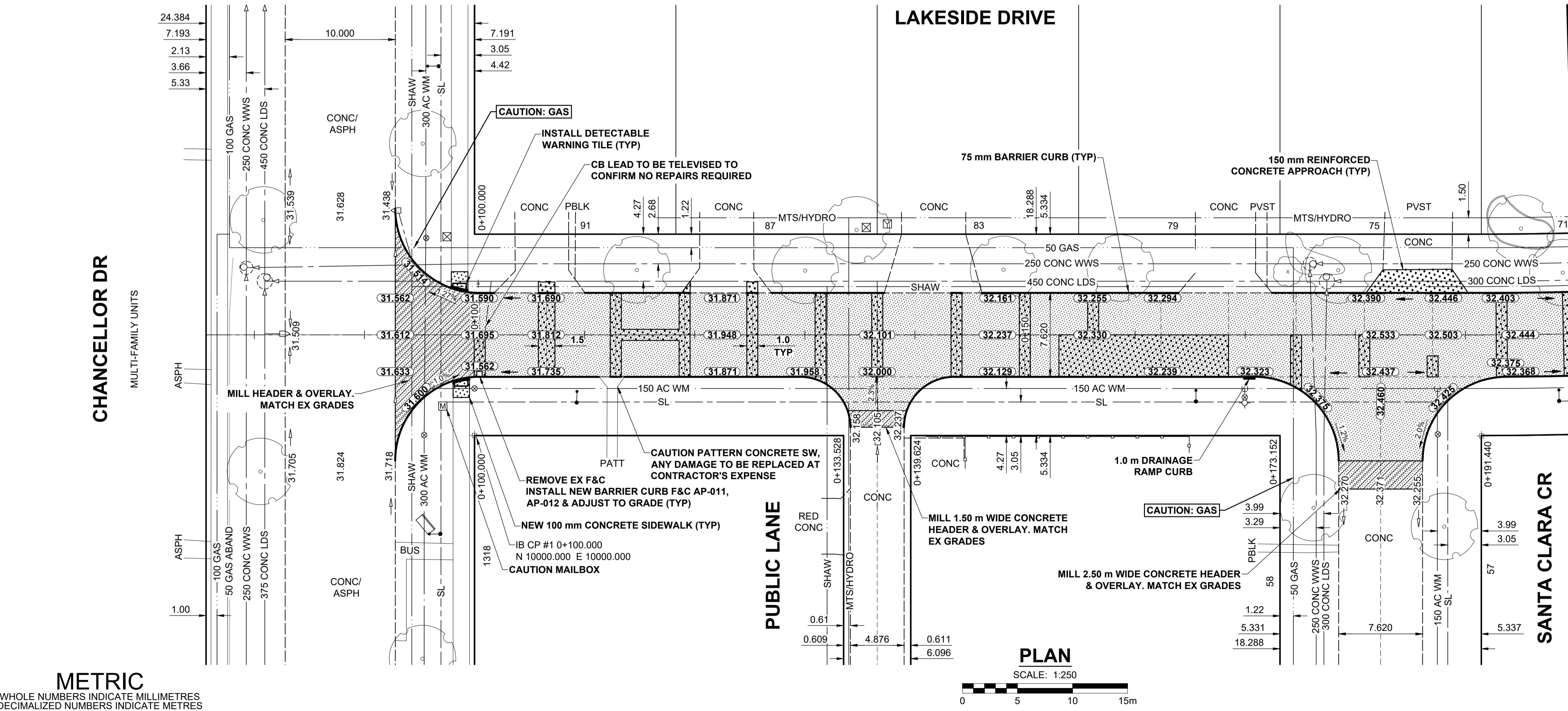


- NOTES**
- ADJUST MH AND CB RIMS TO NEW GRADES.
 - LAMP STANDARDS, HYDRO POLES, AND ANCHORS THAT REQUIRE TEMPORARY SUPPORT, REMOVAL OR REPLACEMENT, TO BE DONE SO AT THE EXPENSE OF THE CONTRACTOR AS NECESSARY.
 - CONTRACTOR TO REGRADE/RENEW EXISTING PRIVATE SIDEWALKS TO LIMITS AS SHOWN. SIDEWALKS TO BE RENEWED WITH CONCRETE UNLESS NOTED OTHERWISE.
 - CONTRACTOR TO TAKE PRECAUTIONARY STEPS TO PROTECT EXISTING TREES WITHIN THE LIMITS OF CONSTRUCTION FROM DAMAGE FROM CONSTRUCTION ACTIVITIES AS OUTLINED IN THE SPECIFICATIONS.
 - CONTRACTOR TO CONFIRM THE LOCATION OF ALL UTILITIES/SERVICES IN THE FIELD PRIOR TO CONSTRUCTION.
 - MODIFIED BARRIER CURB TO BE USED AT ALL INTERSECTION RADII, BACK LANE RADII AND BULLNOSES.
 - CONTRACTOR TO OVERLAY DRIVEWAYS TO ENSURE POSITIVE DRAINAGE TO NEW STREET GRADES. FINAL LIMITS TO BE DETERMINED IN THE FIELD BY CONTRACT ADMINISTRATOR.
 - CB SD-023 & SD-024 OFFSETS ARE DIMENSIONED TO BOC. CB SD-025 OFFSETS ARE DIMENSIONED O/C.
 - REFER TO TENDER FOR DETAILS REGARDING TRAFFIC MANAGEMENT.
 - ADD 200.000 m TO ABBREVIATED ELEVATIONS TO OBTAIN GEODETIC ELEVATIONS.



TYPICAL PAVEMENT SECTION
ASPHALT REHABILITATION
SCALE: NTS

METRIC
WHOLE NUMBERS INDICATE MILLIMETRES
DECIMALIZED NUMBERS INDICATE METRES

EXISTING	LEGEND - PLAN	NEW	EXISTING	LEGEND - PLAN	NEW	EXISTING	LEGEND - PLAN	NEW
---	GAS	○	MANHOLE	●	CONCRETE PAVEMENT	---	LOCATION APPROVED UNDERGROUND STRUCTURES	---
---	MTS HANDWELL/PEDESTAL	□	CATCH BASIN/CATCH PIT	■	CONC SIDEWALK/MEDIAN	---	CONCRETE SIDEWALK	---
---	HYDRO HANDWELL/CABINET	△	CURB INLET WITH BOX	▲	ASPHALT PAVEMENT	---	ASPHALT PAVEMENT	---
---	CATV/FIBRE OPTIC	○	TREE	○	PAVING STONE	---	PAVING STONE	---
---	TRAFFIC SIGNALS/PIT	⊕	TEST HOLE	⊕	GRAVEL	---	GRAVEL	---
---	LAND DRAINAGE SEWER	---	PROPERTY LINE	---	RAMP CURB	---	RAMP CURB	---
---	SANITARY/COMBINED SEWER	---	SURVEY BAR	---	PLANING/REMOVAL	---	PLANING/REMOVAL	---
---	CB LEAD/SSP/DCP	---	FENCE	---				
---	WATERMAIN	---	BOC/EDGE OF PAVEMENT	---				
---	SUBDRAIN	---	ELEVATION	(33.333)				
---	DITCH	---	TRAFFIC SIGN	---				

LOCATION APPROVED UNDERGROUND STRUCTURES

DATE: _____

NOTE: LOCATION OF UNDERGROUND STRUCTURES AS SHOWN ARE BASED ON THE BEST INFORMATION AVAILABLE BUT NO GUARANTEE IS GIVEN THAT ALL EXISTING UTILITIES ARE SHOWN OR THAT THE GIVEN LOCATIONS ARE EXACT. CONFIRMATION OF EXISTENCE AND EXACT LOCATION OF ALL SERVICES MUST BE OBTAINED FROM THE INDIVIDUAL UTILITIES BEFORE PROCEEDING WITH CONSTRUCTION.

B	ISSUED FOR TENDER	20/04/20	RPB
A	ISSUED FOR REVIEW	20/03/13	RPB
No.	REVISIONS	YY/MM/DD	BY

MORRISON HERSHFIELD

DESIGNED BY: RPB
CHECKED BY: GFC

DRAWN BY: DML
APPROVED BY: BWB

RELEASED FOR CONSTRUCTION

HOR SCALE: 1:250
VERT SCALE: 1:10

DATE: 20/03/13

PROFESSIONAL'S SEAL

PRELIMINARY DRAWING

NOT TO BE USED FOR CONSTRUCTION

CONSULTANT FILE NAME: 1905658-Lakeside-PP-01.dwg

THE CITY OF WINNIPEG
PUBLIC WORKS DEPARTMENT
ENGINEERING DIVISION

2020 LOCAL STREET RENEWAL PROGRAM
LAKESIDE DRIVE
CHANCELLOR DR TO AUGUSTA DR
REHABILITATION
PAVING AND GRADING
CHANCELLOR DR TO STA 0+200

CITY DRAWING NUMBER: N/A
SHEET OF: 17 OF 20
DRAWING NUMBER: 17

TENDER No. 19-2020