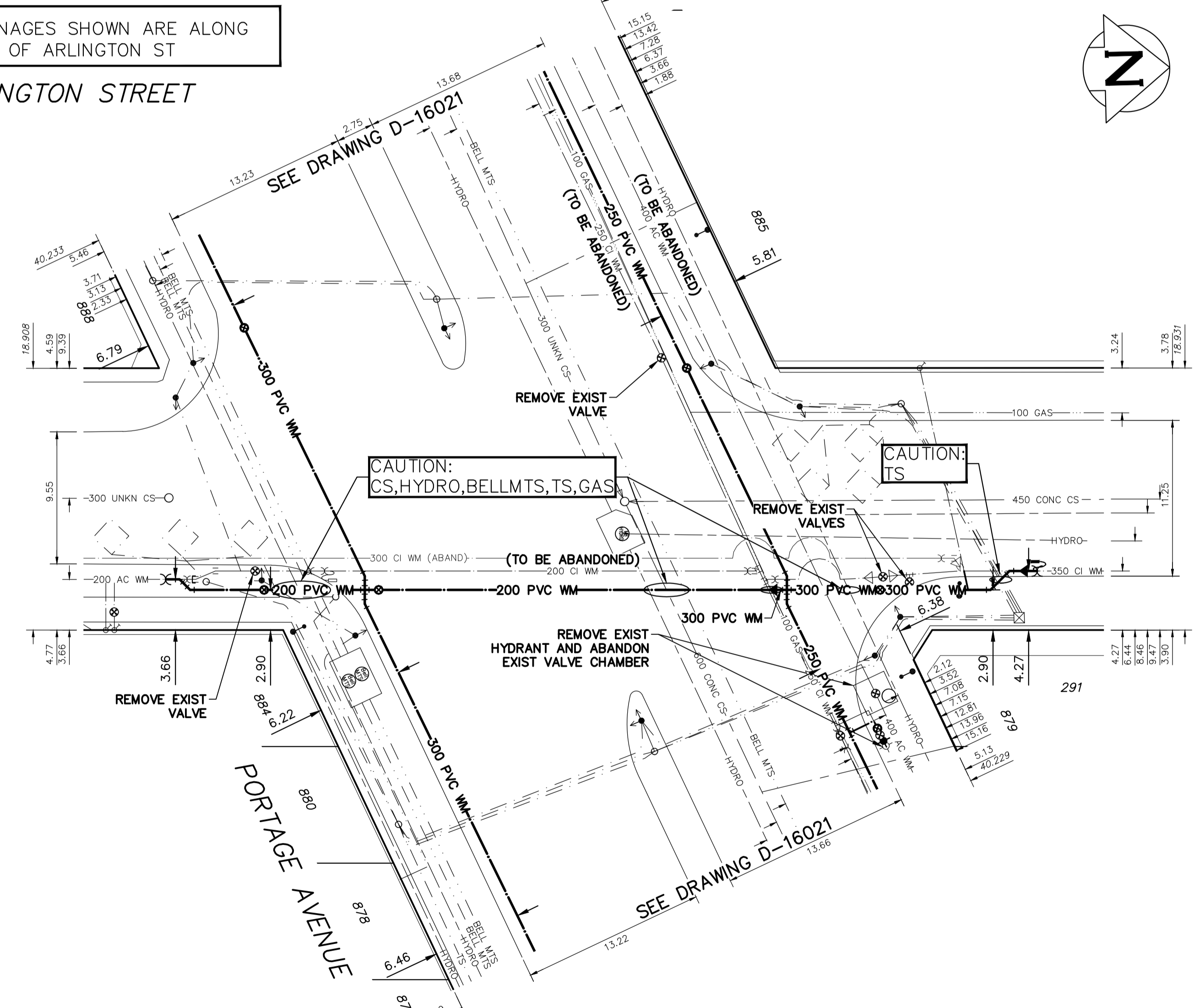


NOTE: CHAINAGES SHOWN ARE ALONG E. R. OF ARLINGTON ST

ARLINGTON STREET

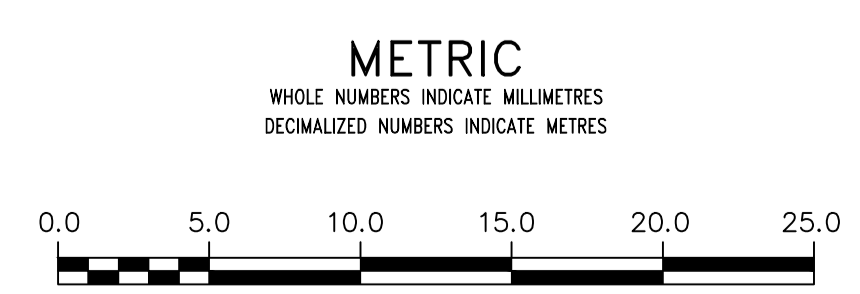


WATER SERVICE INFORMATION

ADDRESS	SIZE (mm)	SIZE (mm)	SHORT & LONG MEASUREMENT	CORP. LOCATION	REMARKS
	(STREET)	(PROP.)			
888 PORTAGE AVE	20	20	14.8 NSL BUILDING	0.9 N S/C	-
COMMERCIAL	CU	CU	9.8 SSL PORTAGE		-
885 PORTAGE AVE	UNKN	25	10.4>NNL PORTAGE AVE	6.4>NNL PORTAGE AVE	RECONNECT SERVICE
COMMERCIAL	UNKN	CU	10.4>NNL PORTAGE AVE		-
884 PORTAGE AVE	20	20	0.6 SSL OF DOOR		-
COMMERCIAL	CU	LEAD	12.2 SSL PORTAGE		OPP S/C
880 PORTAGE AVE	38	38	12.8 SSL PORTAGE		OPP S/C
COMMERCIAL	CU	CU	12.8 SSL PORTAGE		-
878 PORTAGE AVE	UNKN	UNKN	UNKN		UNKN
COMMERCIAL	UNKN	UNKN	UNKN		UNKN
876 PORTAGE AVE	UNKN	UNKN	UNKN		UNKN
COMMERCIAL	UNKN	UNKN	UNKN		UNKN
281 ARLINGTON ST	UNKN	UNKN	UNKN		UNKN
COMMERCIAL	UNKN	UNKN	UNKN		UNKN

*SERVICES TO BE RENEWED TO R. ALL OTHERS TO BE RECONNECTED

NOTE: ALL VALVES TO BE INSTALLED COUNTERCLOCKWISE TO CLOSE



WARNING

IF POWER EQUIPMENT OR EXPLOSIVES ARE TO BE USED FOR EXCAVATION ON THIS PROJECT THE CONTRACTOR MUST:

- 1) NOTIFY THE GAS COMPANY OF THE PROPOSED LOCATION OF EXCAVATION.
- 2) TAKE PRECAUTION TO AVOID DAMAGE TO GAS COMPANY INSTALLATIONS.

SEE PROVINCIAL REGULATION 210/72 FOR DETAILS

LOCATION APPROVED UNDERGROUND STRUCTURES

SUPV. U/G STRUCTURES COMMITTEE DATE

NOTE:

LOCATION OF UNDERGROUND STRUCTURES AS SHOWN ARE BASED ON THE BEST INFORMATION AVAILABLE BUT NO GUARANTEE IS GIVEN THAT ALL EXISTING UTILITIES ARE SHOWN OR THAT THE GIVEN LOCATIONS ARE EXACT. CONFIRMATION OF EXISTENCE AND EXACT LOCATION OF ALL SERVICES MUST BE OBTAINED FROM THE INDIVIDUAL UTILITIES BEFORE PROCEEDING WITH CONSTRUCTION.

B.M. ELEV.					
	3	ADDENDUM 1	2021/05/06	R.H.	
	2	RE-ISSUED FOR TENDER	2021/04/29	R.H.	
	1	ISSUED FOR TENDER	2021/04/28	R.H.	
	0	ISSUED FOR DESIGN REVIEW	2021/04/27	R.H.	
	NO.	REVISIONS	DATE	BY	

wsp

111-93 Lombard Avenue
Winnipeg, Manitoba
R3B 3B1 Canada
Phone: 204-943-3178
Fax: 204-943-4948
wsp.com

DESIGNED BY	R.H.	CHECKED BY	S.M.
DRAWN BY	R.H.	APPROVED BY	S.M.
SCALE:		RELEASED FOR CONSTRUCTION	
HORIZONTAL	1:250		
VERTICAL	1:50		
DATE	2021 05 07	DATE	

PLOT DATE: 2021 05 07

ENGINEER'S SEAL

NOT FOR CONSTRUCTION

CONSULTANT DRAWING NUMBER
211-00299-00-11

THE CITY OF WINNIPEG
WATER AND WASTE DEPARTMENT
ENGINEERING DIVISION

2021 WATER MAIN RENEWAL-CONTRACT 07

ARLINGTON STREET
6.7 S OF S L PORTAGE AVE TO
8.2 N OF N L PORTAGE AVE

SHEET 11 OF 12
CITY DRAWING NUMBER
D-16026

ENGINEERS GEOSCIENTISTS MANITOBA

Certificate of Authorization
WSP Canada Inc.
No. 5750